



Central Unit

Written By: Jasper



INTRODUCTION

Source: Dismantling Guide for IT Equipment, which was elaborated within the SRI project and financially supported by SECO and UNIDO, June 2015



World Resources Forum (WRF)

Mathias Schluep, St. Gallen / Switzerland



Dismantling and Recycling Centre (DRZ)

Markus Spitzbart, Vienna / Austria



Institute for Materials Science & Technology (Empa)

Fabian Blaser, St. Gallen / Switzerland

Introduction

A Central Unit (CU) generally consists of a steel or plastic case, several subcomponents like hard drive, CD ROM, power supply, printed wiring boards (PWB) and cables. Dismantling of subcomponents does not always make sense as it is highly labor-intensive and can be processed by appropriate industries. However, the removal of hazardous substances (e.g. batteries on PWBs) is required.

Health & Safety

It should be ensured that the different components, particularly the monitor, are not broken or damaged. Personal protection equipment like gloves, apron and robust shoes should be worn.

TOOLS:

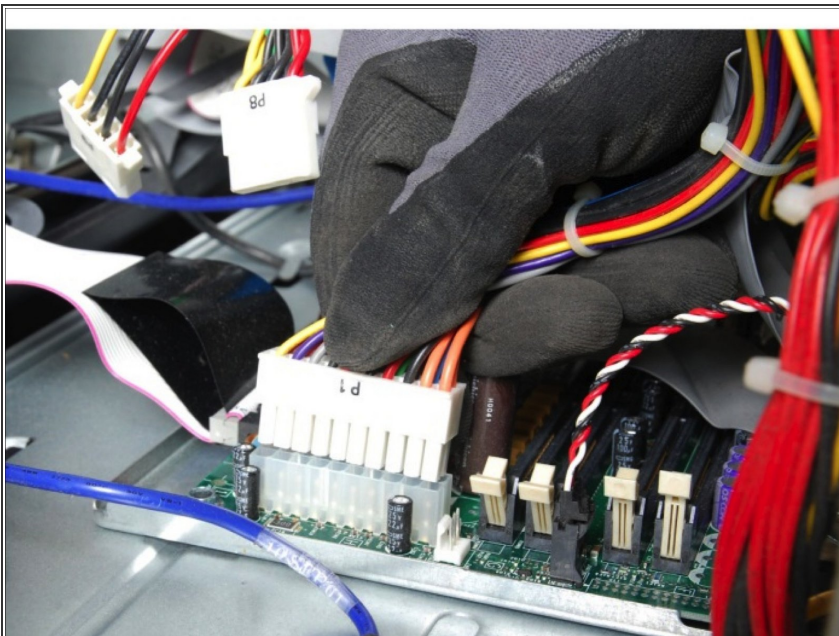
- [Several screwdrivers \(T1\)](#) (1)
- [Flathead Screwdriver \(T2\)](#) (1)
- [Side cutter \(T4\)](#) (1)
- [Pliers \(T5\)](#) (1)
- [Industrial Scissors \(T6\)](#) (1)
- [Cutter \(T7\)](#) (1)
- [Power Screw Driver \(T8\)](#) (1)
- [Industrial scale \(T9\)](#) (1)
- [Robust gloves \(P1\)](#) (1)
- [Protective shoes \(P4\)](#) (1)
- [Apron \(P5\)](#) (1)

Step 1 — Central Unit



- Remove the CU casing to get access to the internal components by unscrewing all screws. Use an automatic screw driver where applicable to save time.
- Put the cover aside.

Step 2



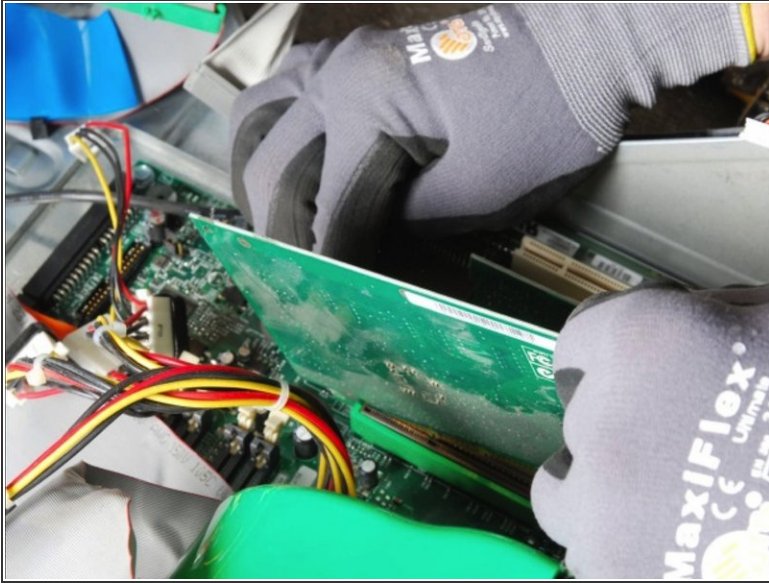
- Now remove the screws holding the internal components to be able to remove them all.
- Unplug all the cables and wires by pulling them straight out or releasing them by applying pressure to the clip in case they have a locking clip.

Step 3



- Once all wires and cables have been disconnected the drives (floppy drive, CD drive and hard disk drive, etc.) can be removed. Also remove the power supply.

Step 4



- To remove the motherboard it is necessary to remove all other components first from the computer case. Along with the motherboard all other PWBs can be removed.
 - ❗ The number of mounting screws attaching the motherboard to the case will vary from 3-10 depending upon design. Some will be held in place with plastic clips rather than screws. For removal of plastic clips, simply pry them off with a screwdriver.
 - The motherboard contains some components that can be removed such as RAM, Cmos battery, NIC (network interface card) and the CPU (central processing unit).
- ⚠ Put any batteries in a separate box for adequate disposal!

Step 5



- After removing the motherboard, the casing should be completely blank.

Step 6



- Separate the remaining materials according to their type.
- ☒ Make sure the plastic parts are completely free of metal pieces.