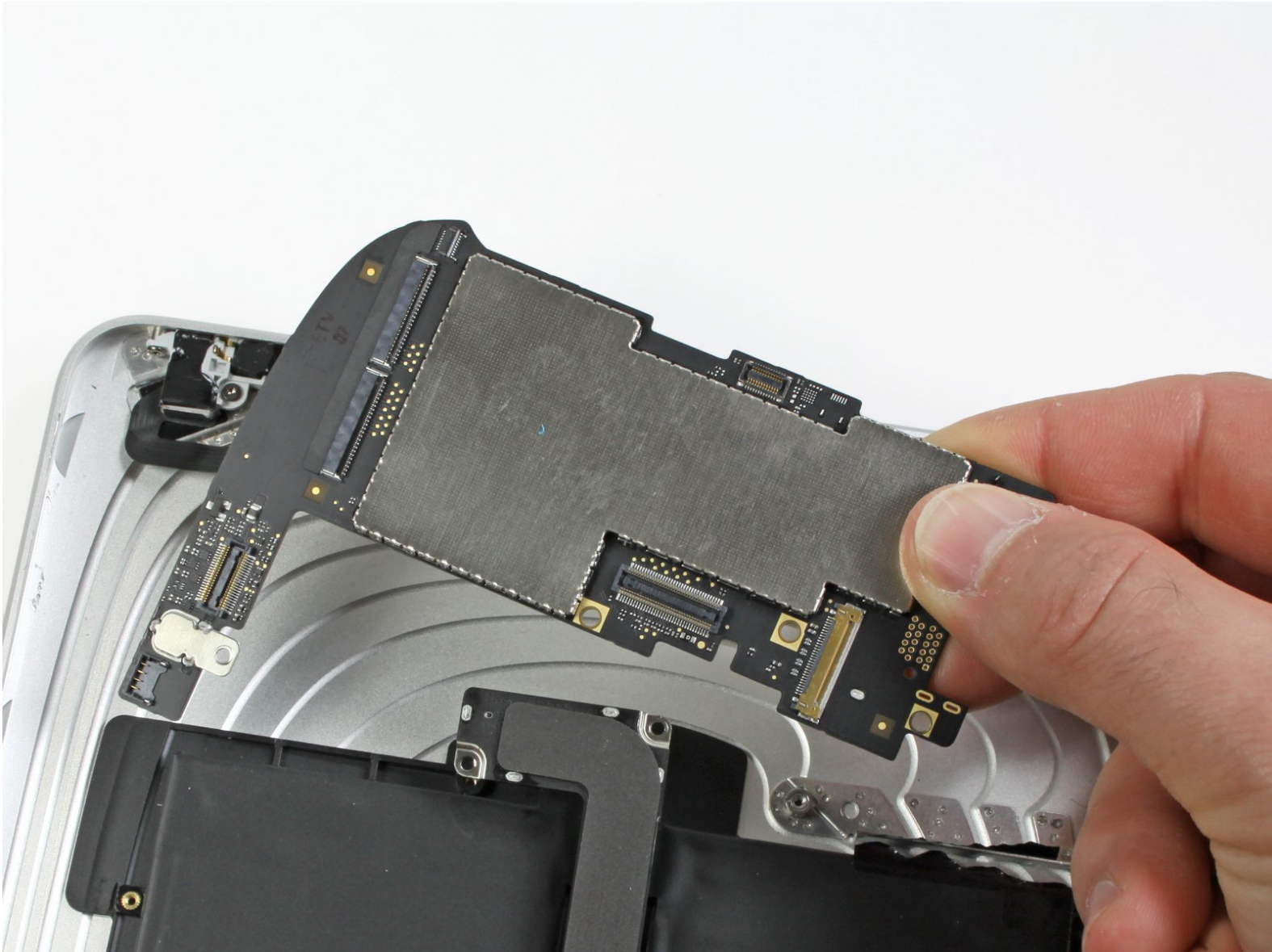




# iPad 3G Logic Board Replacement

Written By: Dozuki System



# INTRODUCTION

Use this guide to replace your iPad 3G's logic board.



## TOOLS:

- [Metal Spudger](#) (1)
- [Plastic Opening Tools](#) (1)
- [T5 Torx Screwdriver](#) (1)




## PARTS:

- [iPad 3G \(1st Gen\) Logic Board](#) (1)

## Step 1 — iPad 3G Logic Board Replacement




- If your display glass is cracked, keep further breakage contained and prevent bodily harm during your repair by taping the glass.
- Lay overlapping strips of clear packing tape over the iPad's display until the whole face is covered.
  - ① This will keep glass shards contained and provide structural integrity when prying and lifting the display.
- Do your best to follow the rest of the guide as described. However, once the glass is broken, it will likely continue to crack as you work, and you may need to use a metal prying tool to scoop the glass out.

 Wear safety glasses to protect your eyes, and be careful not to damage the LCD screen.

## Step 2



-  The iPad shown in the photos may look slightly different from your iPad, but the procedure is the same.
- Insert a metal spudger between the right edge of the display assembly and the rear panel assembly.
  - Rotate the spudger away from you to release the tabs along the top edge of the display.

### Step 3



- Insert a second metal spudger between the top edge of the display assembly and the rear panel assembly to keep the tabs from snapping back into place.
- Pry the display assembly away from the rear panel.



## Step 4



- Continue prying the display assembly away from the rear panel along the bottom and left edges of the iPad.

 Use extreme caution as you approach the top edge of the iPad. The digitizer ribbon cable is located near the edge of the rear panel and can easily be damaged.

## Step 5



- Lift the display assembly away from the rear panel assembly by its bottom edge.

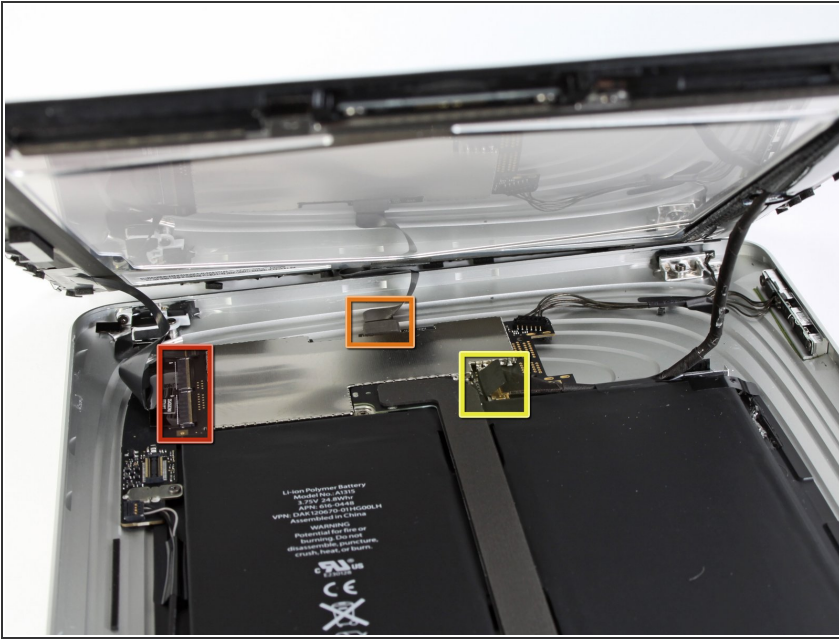
 Do not excessively lift the display assembly off the rest of the iPad, as a fragile antenna cable with very little slack still connects the two components.

## Step 6



- Use the flat end of a spudger to pry the antenna connector closest to the bottom of the iPad up off its socket on the communications board.

## Step 7



- In the following steps, you will disconnect the three cables attaching the display assembly to the logic board. The cables are for the following components:
  - Digitizer
  - Ambient Light Sensor
  - Display Data Cable

## Step 8



- Use the edge of an iPod opening tool to flip up the retaining flaps holding the digitizer ribbon cables in their sockets on the logic board.
- ⚠ Be sure you are flipping up the retaining flap, **not** the socket itself.
- Pull the digitizer ribbon cables straight out of their sockets.



## Step 9



- Use an iPod opening tool to remove the ambient light sensor connector from its socket by gently prying upward.

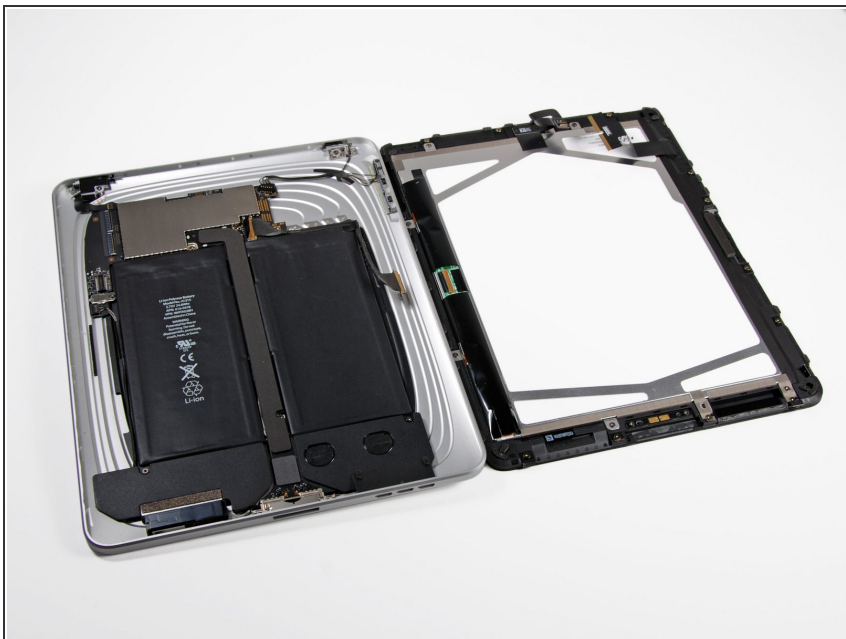
## Step 10



- Disconnect the display data cable from the main board by flipping up the metal retainer by its black plastic pull tab.
- Pull the cable connector away from its socket.
- Pull the connector parallel to the face of the logic board.

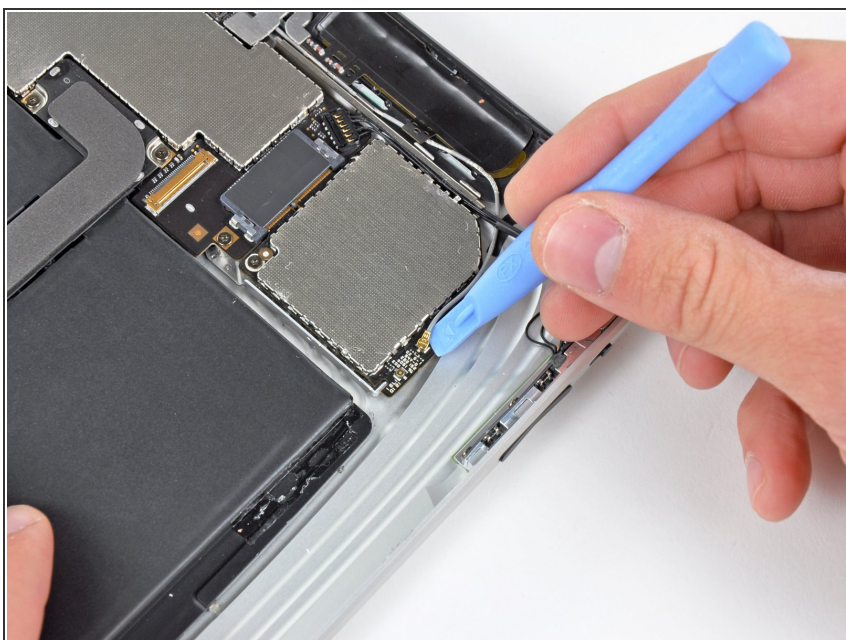
This document was generated on 2020-11-14 08:33:22 AM (MST).

## Step 11



- Remove the display assembly from the rear panel assembly.

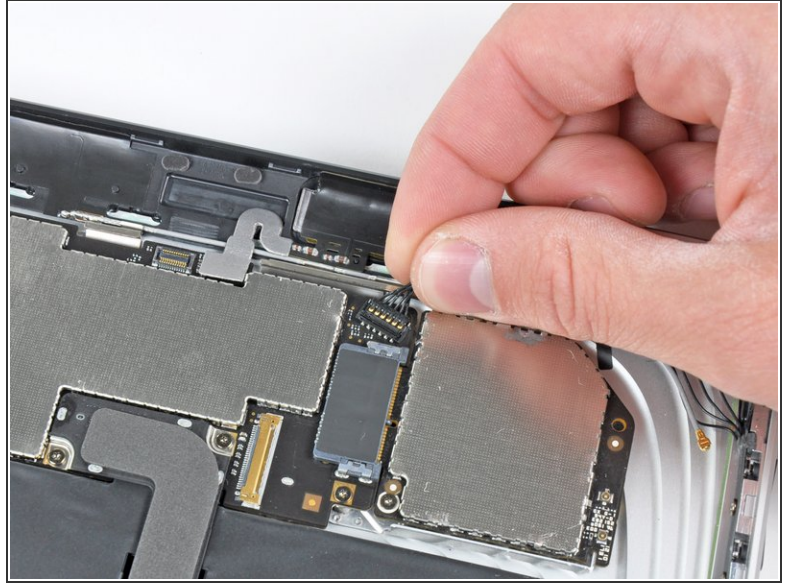
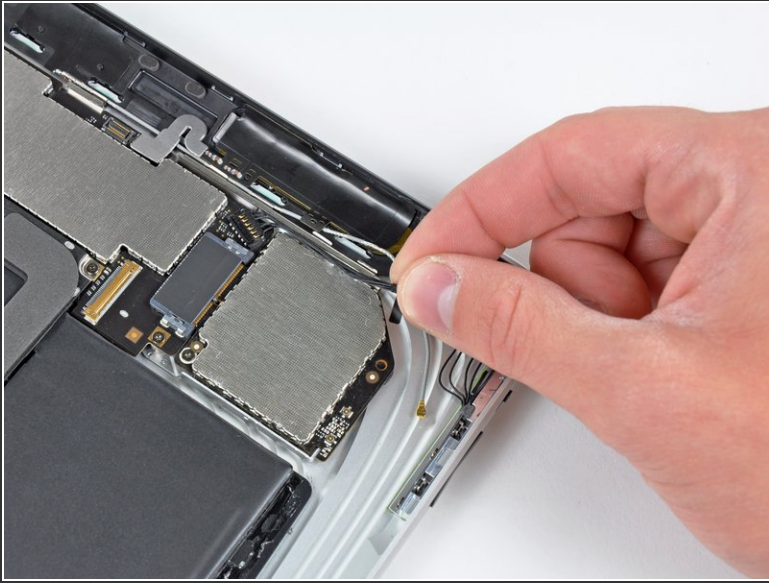
## Step 12



- Use the edge of an iPod opening tool to carefully pry the remaining antenna connector up off the communications board.

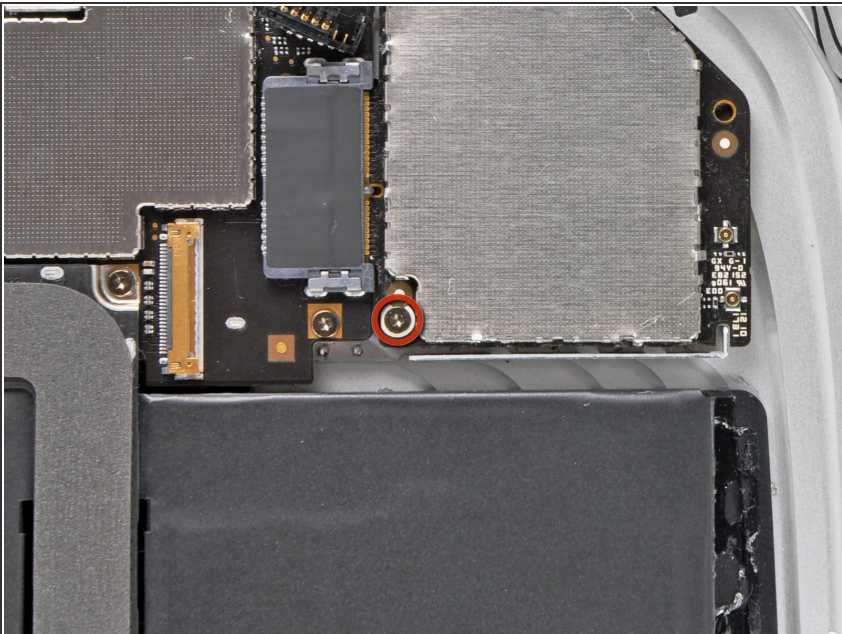


## Step 13



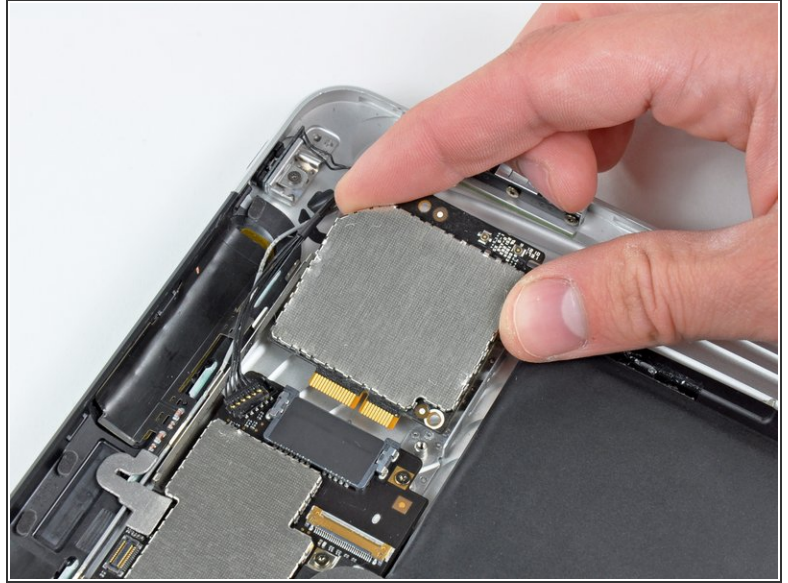
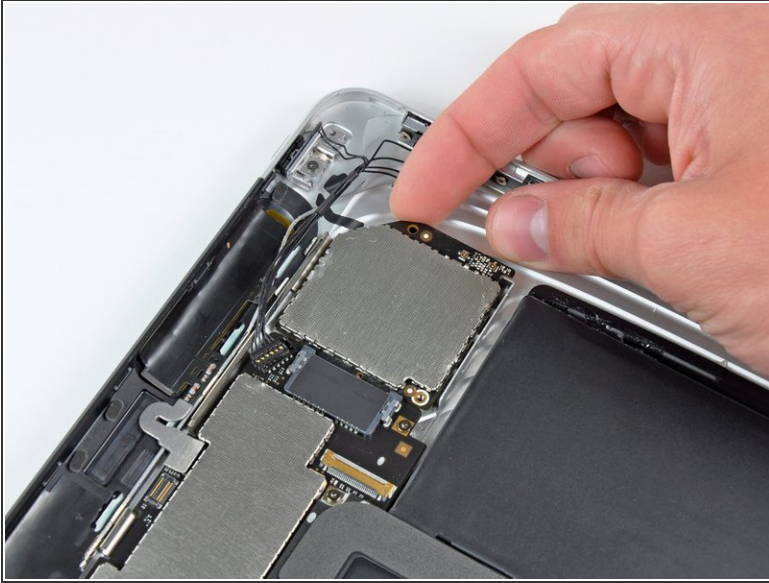
- De-route the control button cable along the top edge of the communications board.
- Pull the communications cable upward to lift its connector up and out of the socket on the logic board.

## Step 14



- Remove the single T5 Torx screw securing the communications board to the rear case.

## Step 15



- ⓘ If necessary, lift the right edge of the communications board upward to release it from the adhesive pad attached to the rear case.
- Pull the communications board away from its socket on the logic board.

## Step 16

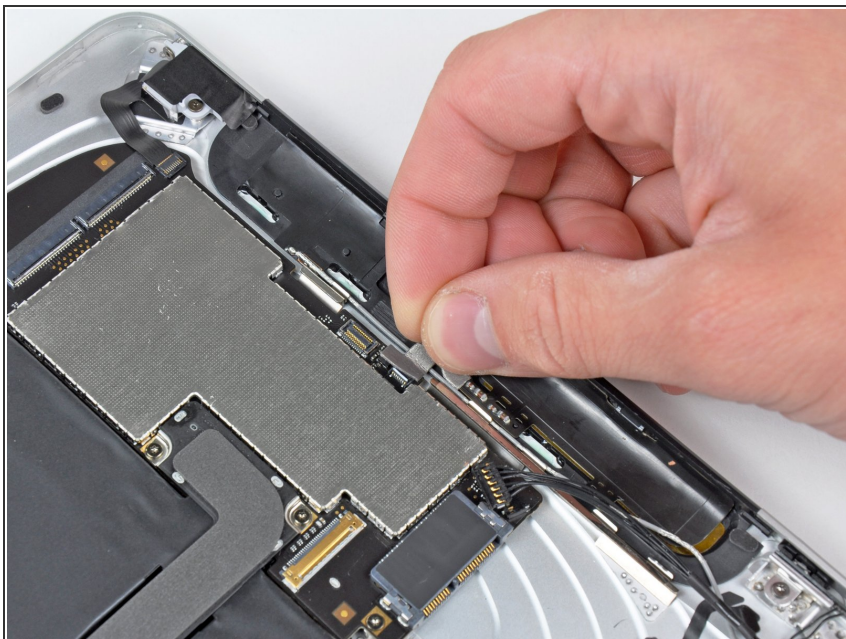


- Carefully peel back the rubber EMI shield covering the GPS antenna socket.
- Use the edge of an iPod opening tool to flip up the GPS ribbon cable retaining flap attached to the GPS cable's socket on the logic board.

⚠ Be sure you pry up on the retaining flap, **not** the socket itself.

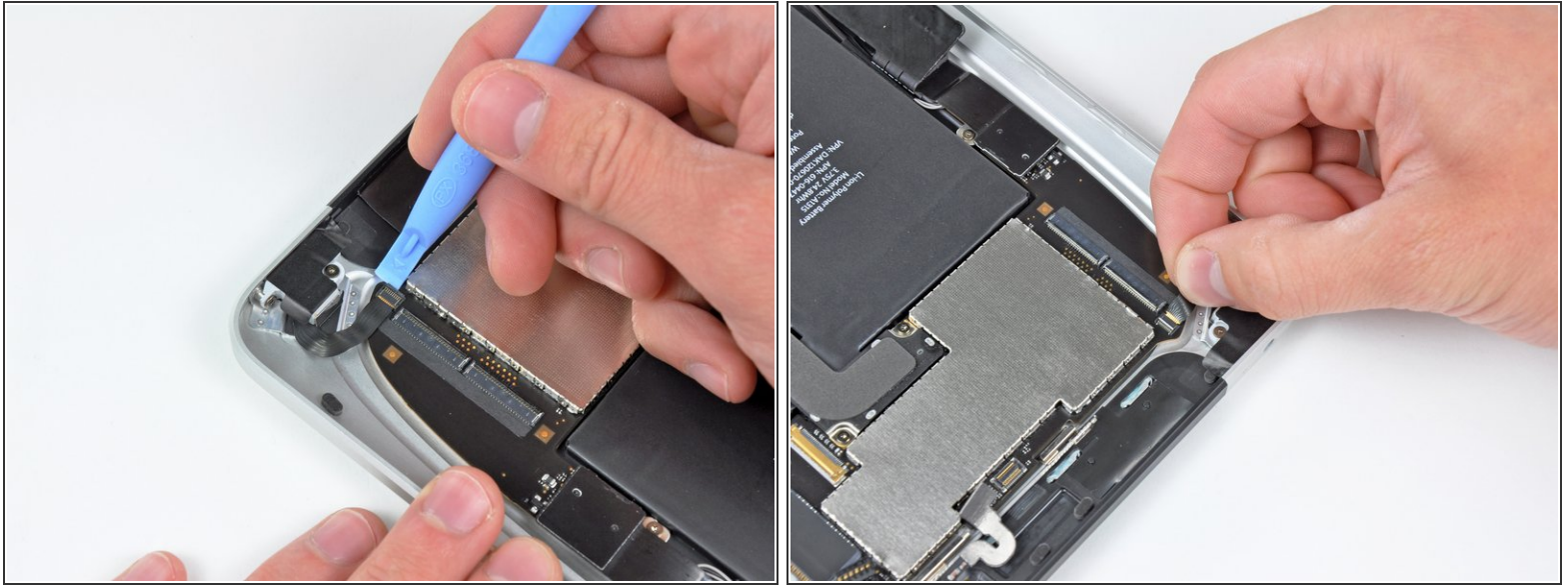


## Step 17



- Pull the GPS antenna ribbon cable out of its socket.

## Step 18



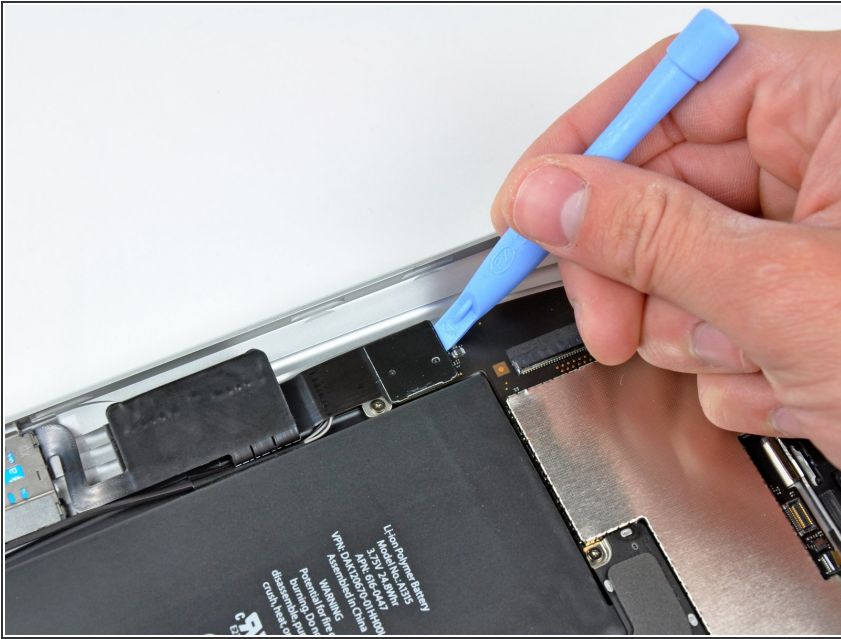
- Use the edge of an iPod opening tool to pry up the retaining flap on the headphone jack/microphone socket.

⚠ Be sure you pry up on the retaining flap, **not** the socket itself.

- Pull the headphone jack/microphone ribbon cable out of its socket.

ⓘ Pull the cable toward the left side of the iPad.

## Step 19



- Use an iPod opening tool to pry the SIM board connector up off its socket on the logic board.
- ⓘ This connector might be covered with black tape. Use tweezers to remove the tape before prying.

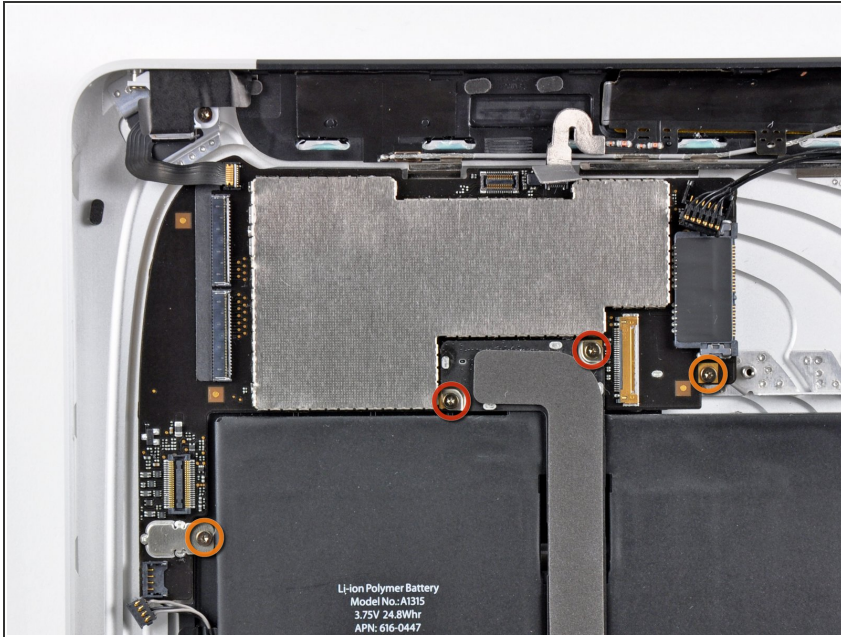
## Step 20



- Fold the SIM cable toward the bottom of the iPad to access the speaker connector.
- Use the edge of an iPod opening tool to pry the speaker connector up and out of its socket on the logic board.
- ⓘ Pry up from beneath the wires.

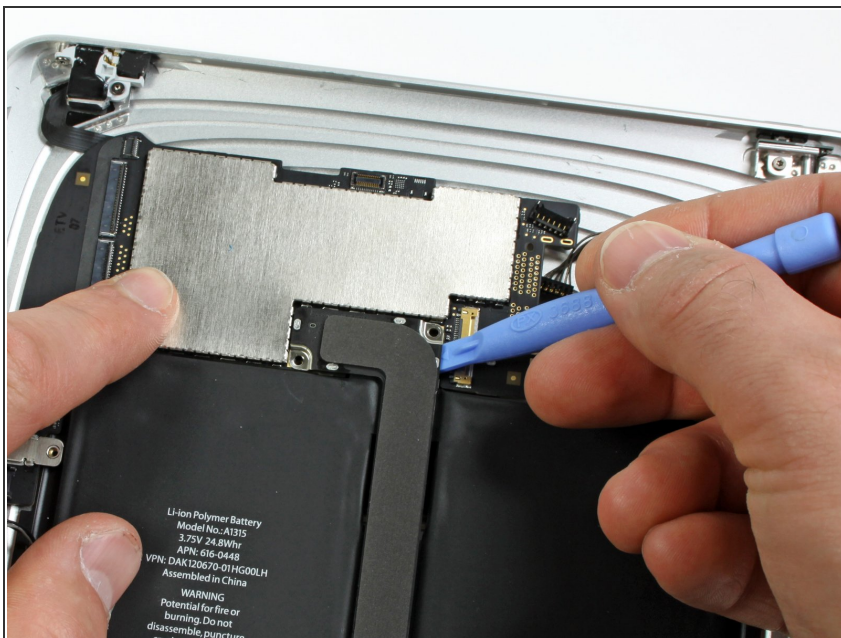


## Step 21



- Remove the following screws securing the logic board to the rear panel assembly.
  - Two 4.56 mm T5 Torx screws.
  - Two 3.76 mm T5 Torx screws.

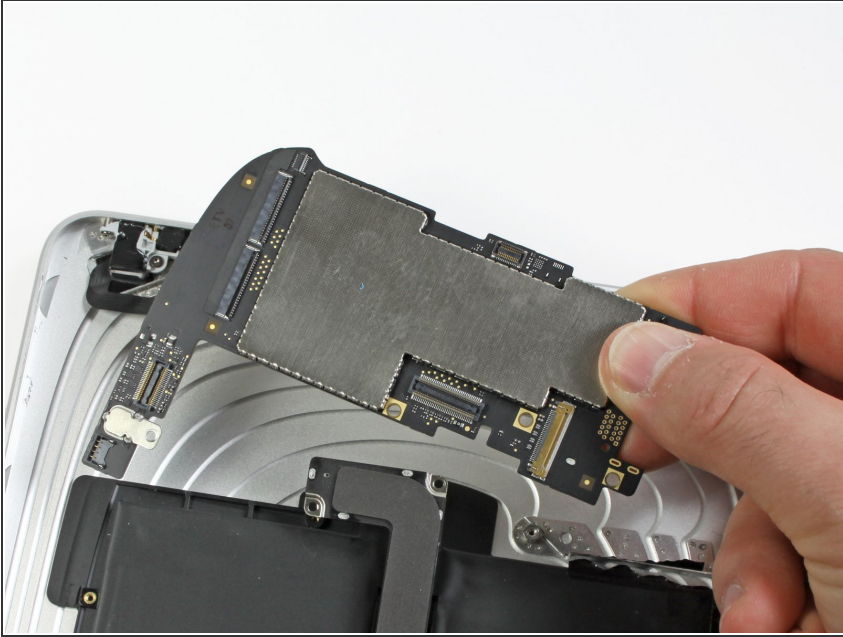
## Step 22



- Use the edge of an iPod opening tool to carefully pry the dock cable connector straight up off the logic board.



## Step 23



- Lift the logic board out of the rear panel assembly.

To reassemble your device, follow these instructions in reverse order.