



iPad Wi-Fi Front Panel Assembly Replacement

Written By: Dozuki System



INTRODUCTION

[video: <http://www.youtube.com/watch?v=BnGZy74xMOY>]

This guide will show you how to replace your iPad Wi-Fi's front panel.



TOOLS:

- [Metal Spudger](#) (1)
- [Plastic Opening Tools](#) (1)
- [T5 Torx Screwdriver](#) (1)



PARTS:

- [iPad Wi-Fi Front Panel Assembly](#) (1)
(Includes display clips)

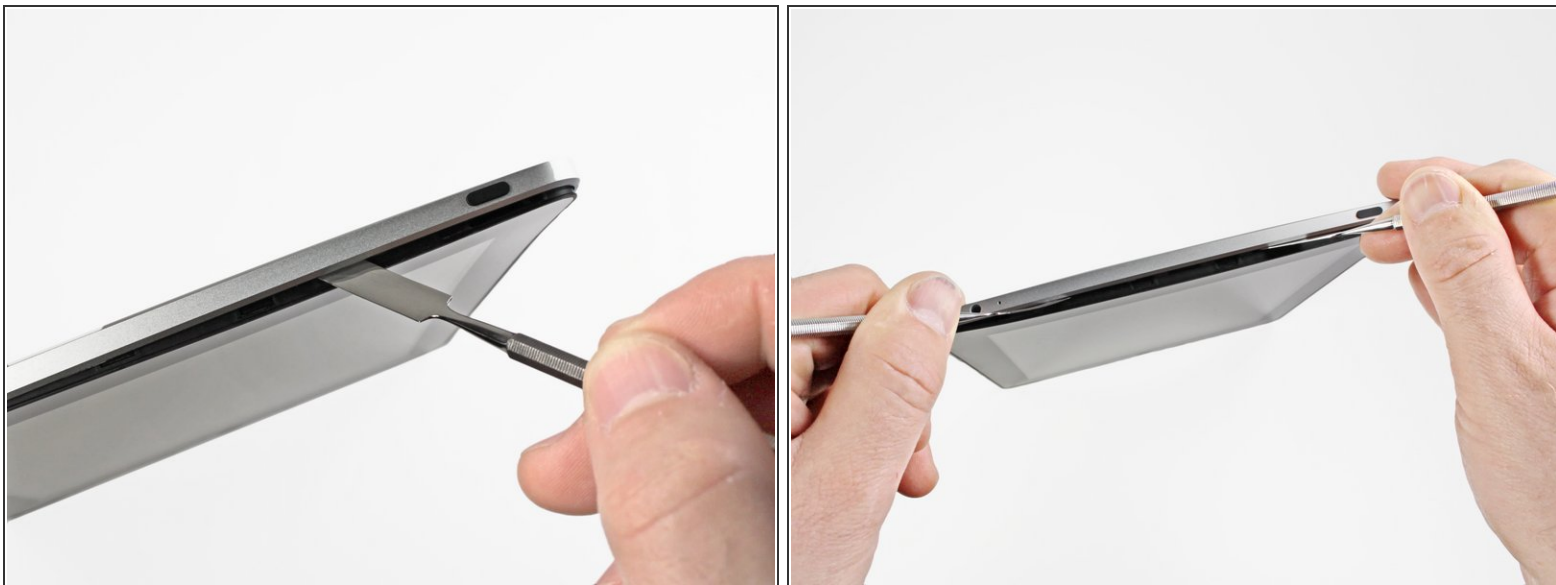
Step 1 — iPad Wi-Fi Front Panel Assembly Replacement



- If your display glass is cracked, keep further breakage contained and prevent bodily harm during your repair by taping the glass.
- Lay overlapping strips of clear packing tape over the iPad's display until the whole face is covered.
 - ① This will keep glass shards contained and provide structural integrity when prying and lifting the display.
- Do your best to follow the rest of the guide as described. However, once the glass is broken, it will likely continue to crack as you work, and you may need to use a metal prying tool to scoop the glass out.

 Wear safety glasses to protect your eyes, and be careful not to damage the LCD screen.

Step 2



- Insert a metal spudger between the top edge of the display assembly and the rear panel assembly.
- Rotate the spudger away from you to release the tabs along the top edge of the display.
- Insert a second metal spudger between the top edge of the display assembly and the rear panel assembly to keep the tabs from snapping back into place.

Step 3




- With one spudger, work your way along the right edge of the iPad.
- The front panel is held to the aluminum back by metal clips on the top, bottom, and left sides. The right side has plastic tabs which slide into recesses in the backplate.
- Once the clips are released, lift the left side of the front panel up and slide it to the left to clear the tabs from the aluminum backplate.

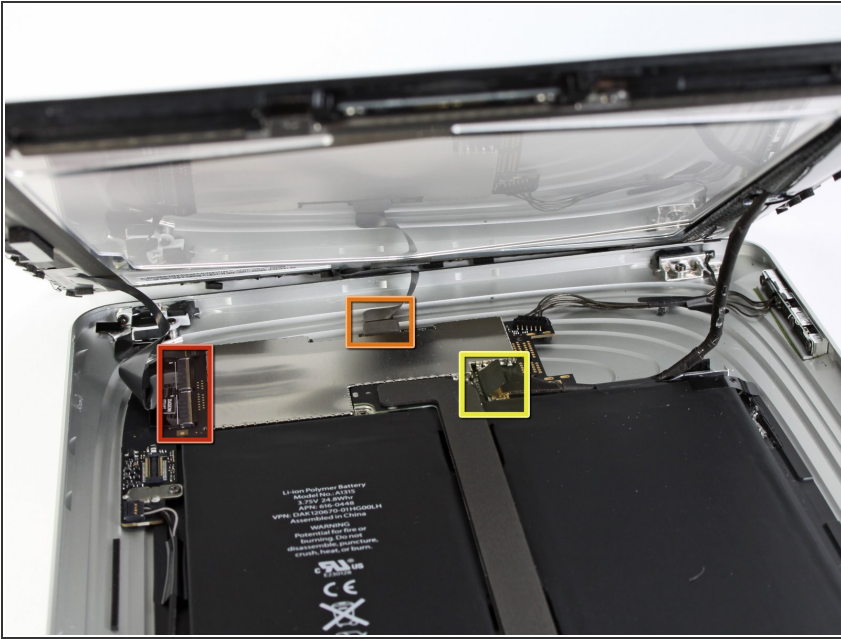
Step 4



- Lift the display assembly away from the rear panel assembly by its bottom edge.

 Do not attempt to remove the display at this time, as it is attached to the rear panel assembly.

Step 5



- In the following steps, you will disconnect the three cables attaching the display assembly to the logic board. The cables are for the following components:
 - Digitizer
 - Ambient Light Sensor
 - Display Data Cable

Step 6



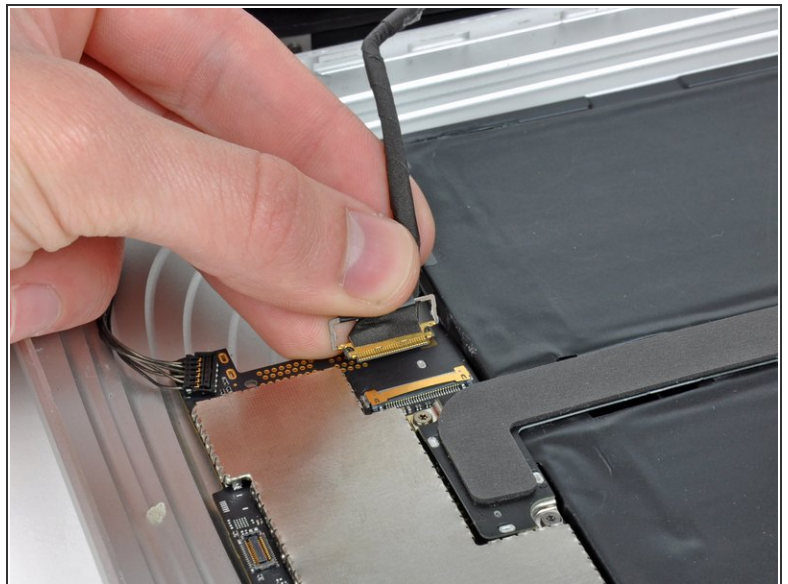
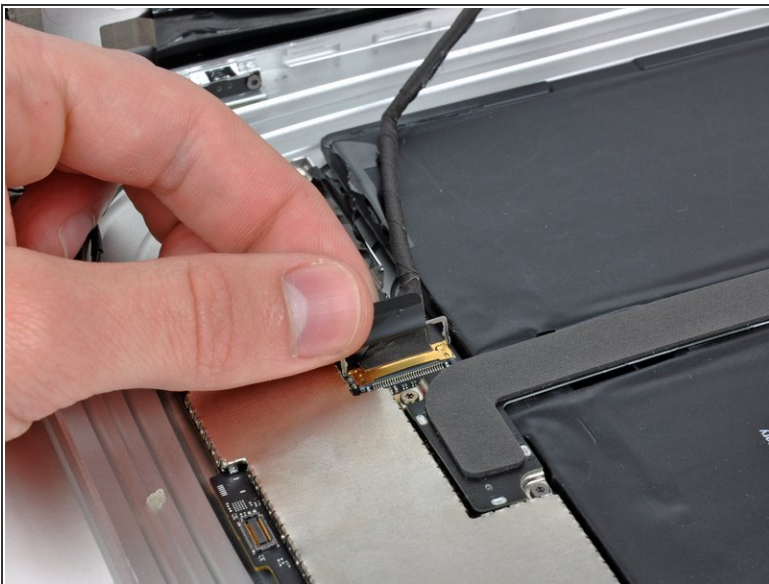
- Use the edge of a plastic opening tool to flip up the retaining flaps holding the digitizer ribbon cables in their sockets on the logic board.
- ⚠ Be sure you are flipping up the retaining flap, **not** the socket itself.
- Pull the digitizer ribbon cables straight out of their sockets.

Step 7



- Use a plastic opening tool to remove the ambient light sensor connector from its socket by gently prying upward.

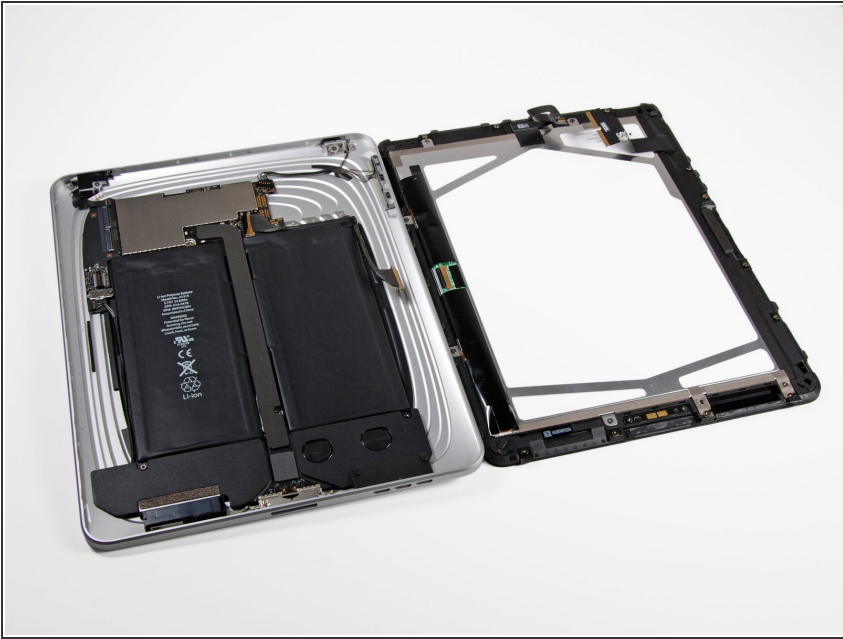
Step 8



- Disconnect the display data cable from the main board by flipping up the metal retainer by its black plastic pull tab.
- Pull the cable connector away from its socket.
- Pull the connector parallel to the face of the logic board.

This document was generated on 2020-11-14 08:36:25 AM (MST).




Step 9



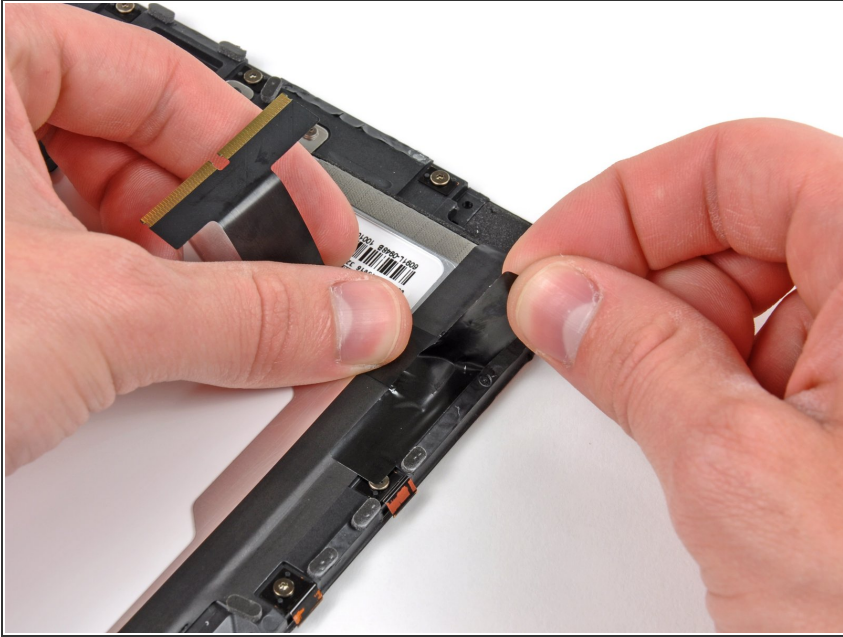
- Remove the display assembly from the rear panel assembly.

Step 10



-  If you are reusing the LCD, it is not necessary to peel the ambient light sensor off the back face of the LCD.
- Use the edge of a plastic opening tool to carefully pry the ambient light sensor board off the adhesive securing it to the display frame.
 - Once you've gained enough clearance, peel the ambient light sensor off the LCD.
-  Be careful not to crease the ambient light sensor below its top section, as the portion with adhesive applied may break off.
-  If necessary, attach the plastic view window to your new ambient light sensor before installation.

Step 11



- While holding the digitizer cable down, carefully peel back the piece of tape connecting the digitizer cable to the display frame.

Step 12



- Remove the three T5 Torx screws securing the clips and LCD brackets covered in EMI tape near the home button switch.
- Carefully peel the display clip and its attached tape off the black plastic display frame.
- ☑ If you are replacing the LCD, be sure to transfer these pieces of EMI tape and their attached clips to the new LCD.

Step 13




- Remove the remaining T5 Torx screws securing the LCD to the black plastic display frame.

Step 14



- Insert the edge of a plastic opening tool under one of the ears attached to the steel LCD frame.
- Twist the plastic opening tool to gently pry the LCD up off the adhesive securing it to the front glass panel.

 Be sure not to excessively bend the LCD, as it is made of glass.

This document was generated on 2020-11-14 08:36:25 AM (MST).

Step 15



- Repeat the process detailed on the previous step to pry up the display around the three sides opposite the digitizer cable side of the display.

Step 16



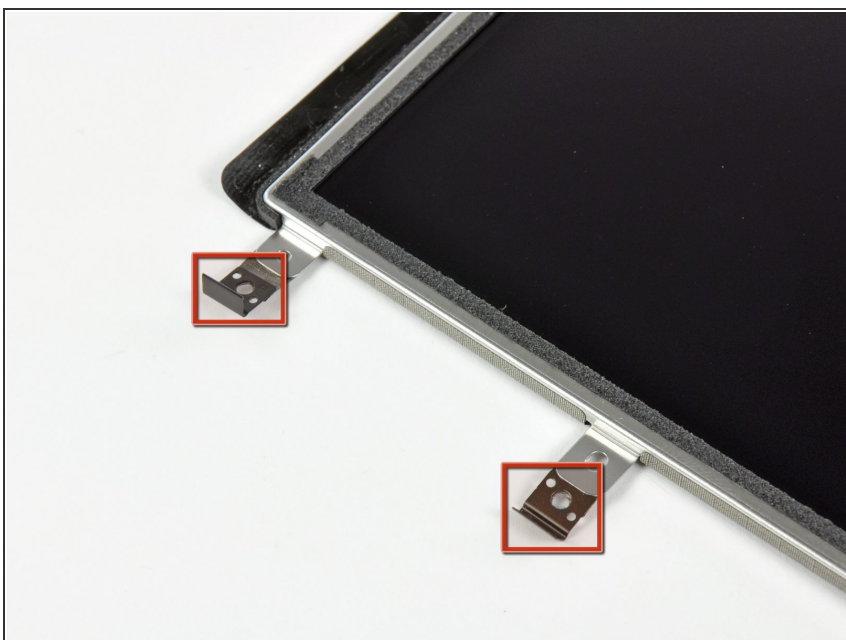
- Lift the LCD from its free end, and remove it from the display frame.
- Carefully peel the adhesive securing the long side of the LCD to the display frame, then remove the LCD.

Step 17



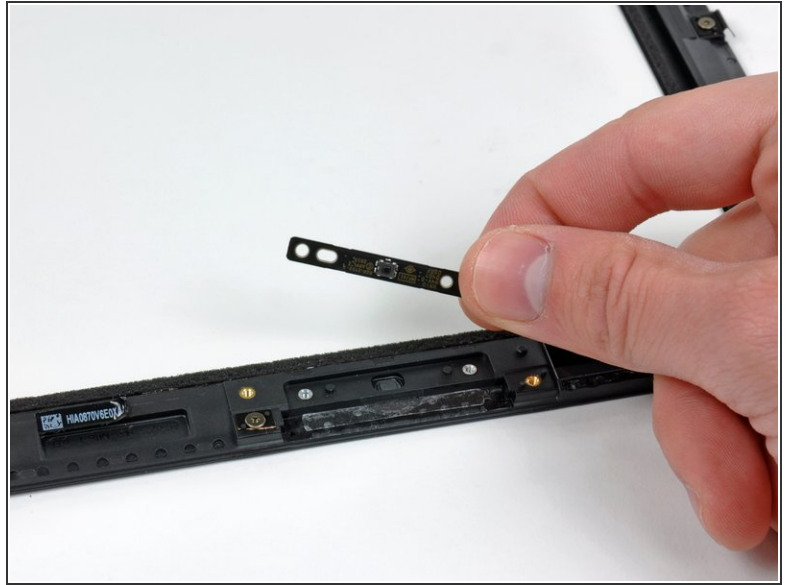
- If it is still stuck to the front panel, remove the strip of EMI tape near the ambient light sensor socket.
- ★ If necessary, transfer this to your new LCD.
- ★ If it is attached to the LCD and you are reusing the LCD, skip this step. If you are replacing the LCD as well, transfer the strip of EMI tape to your new LCD.

Step 18



- If they are still in good shape, transfer the clips and EMI tape near the bottom of the LCD to your new LCD.

Step 19



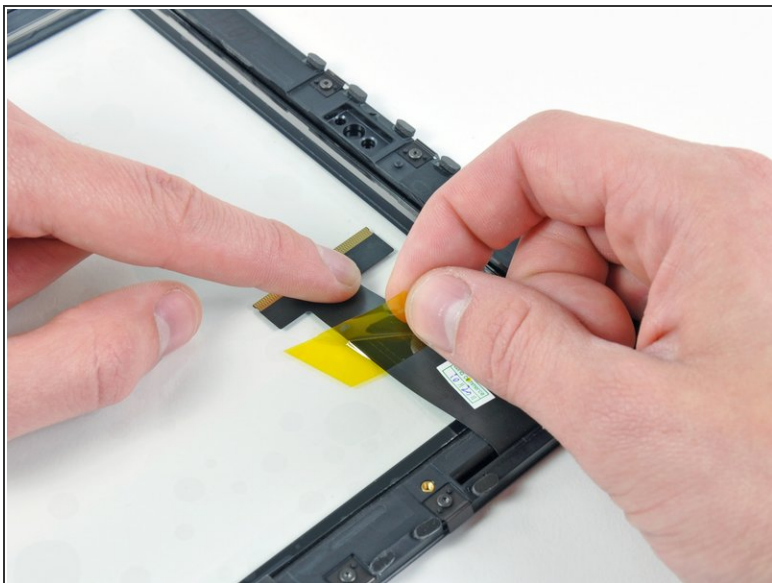
- Remove the two T5 Torx screws securing the home button switch to the plastic display frame.
- Remove the home button switch board from the front panel assembly.

Step 20



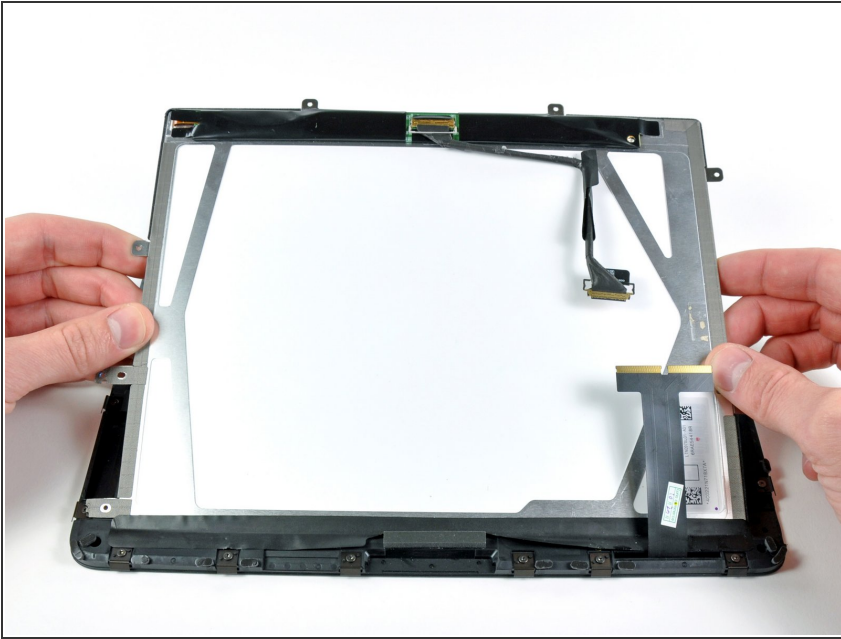
- If you are reusing your LCD, use the edge of a plastic opening tool to lift up a corner of the foam tape attached to the LCD.
- Remove the tape from the perimeter of the glass face of the LCD.

Step 21



- Remove the piece of yellow tape securing the digitizer cable to the inner face of the front panel assembly, being careful not to rip the cable in the process.
 - Peel the protective sheeting off the inner face of the front panel assembly.
- ⚠ Be careful not to get any fingerprints or dust on the inner face of the front panel, as they will be annoyingly visible when the device is turned on.

Step 22



- ⚠ Be sure the face of the LCD is perfectly clean before proceeding.
- Stick the tape down along the long edge of the LCD to the frame of the front panel assembly.
- Carefully lower the LCD down into its recess in the front panel frame, being sure it is properly positioned.

Step 23



- Hold back the strips of EMI tape along the lower edge of the LCD as you remove the two T5 Torx screws securing the retaining clips shown.
- Stick the tape down against the new clips and reinstall the two T5 Torx screws.
- ⓘ If you are replacing your panel with a new one, be aware that the new panel may have a protective film on the outside and/or inside of the frame. This needs to be removed.

Continue the installation by following the guide from [Step 12](#) in reverse.

This document was generated on 2020-11-14 08:36:25 AM (MST).

