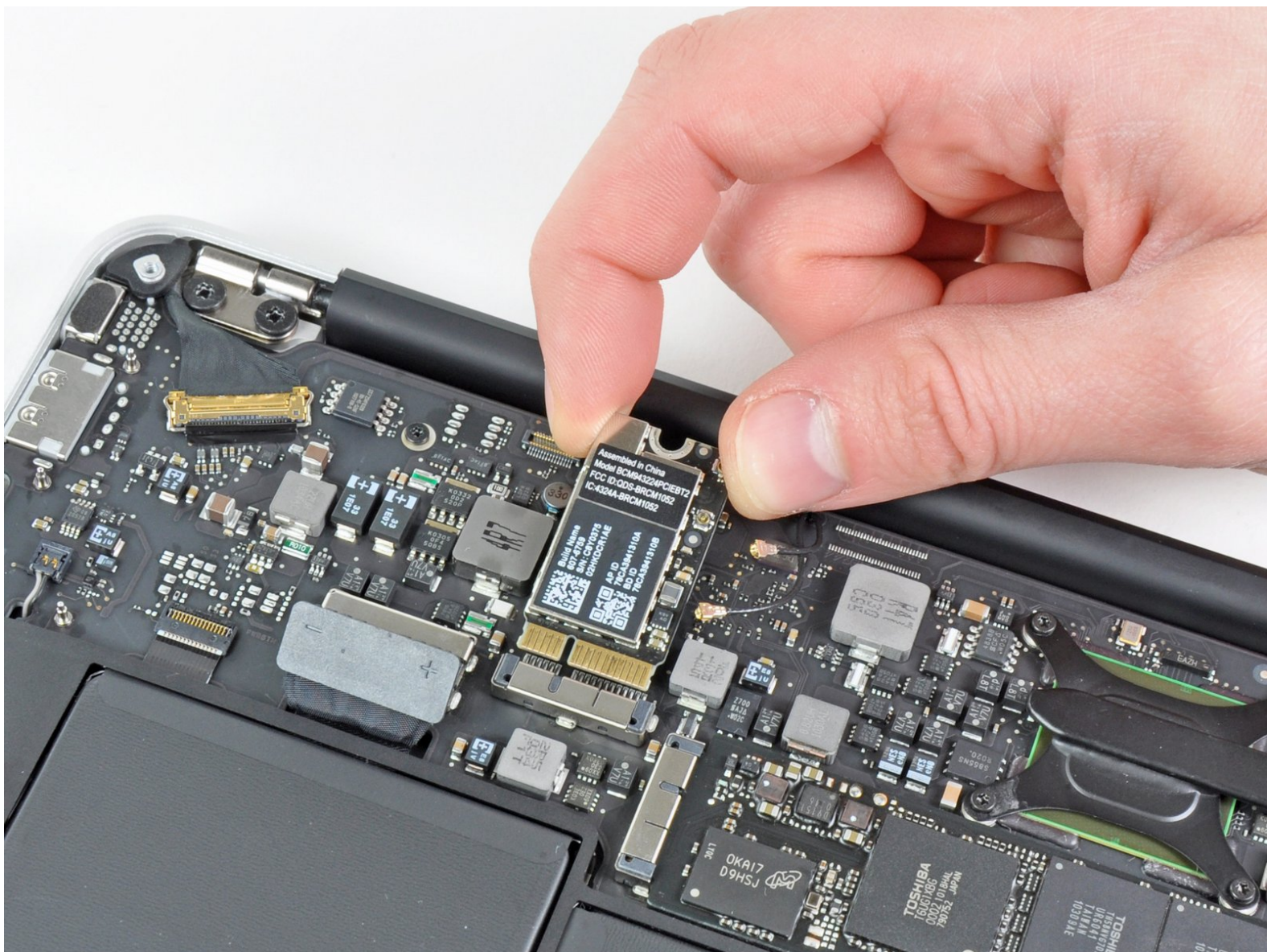




MacBook Air 11" Late 2010 AirPort/Bluetooth Card Replacement

Written By: Dozuki System



INTRODUCTION

Use this guide to replace your MacBook Air's AirPort/Bluetooth card.



TOOLS:

- [P5 Pentalobe Screwdriver Retina MacBook Pro and Air](#) (1)
- [Spudger](#) (1)
- [T5 Torx Screwdriver](#) (1)



PARTS:

- [MacBook Air \(Late 2010/Mid 2011\) AirPort/Bluetooth Board](#) (1)

Step 1 — MacBook Air 11" Late 2010 AirPort/Bluetooth Card Replacement



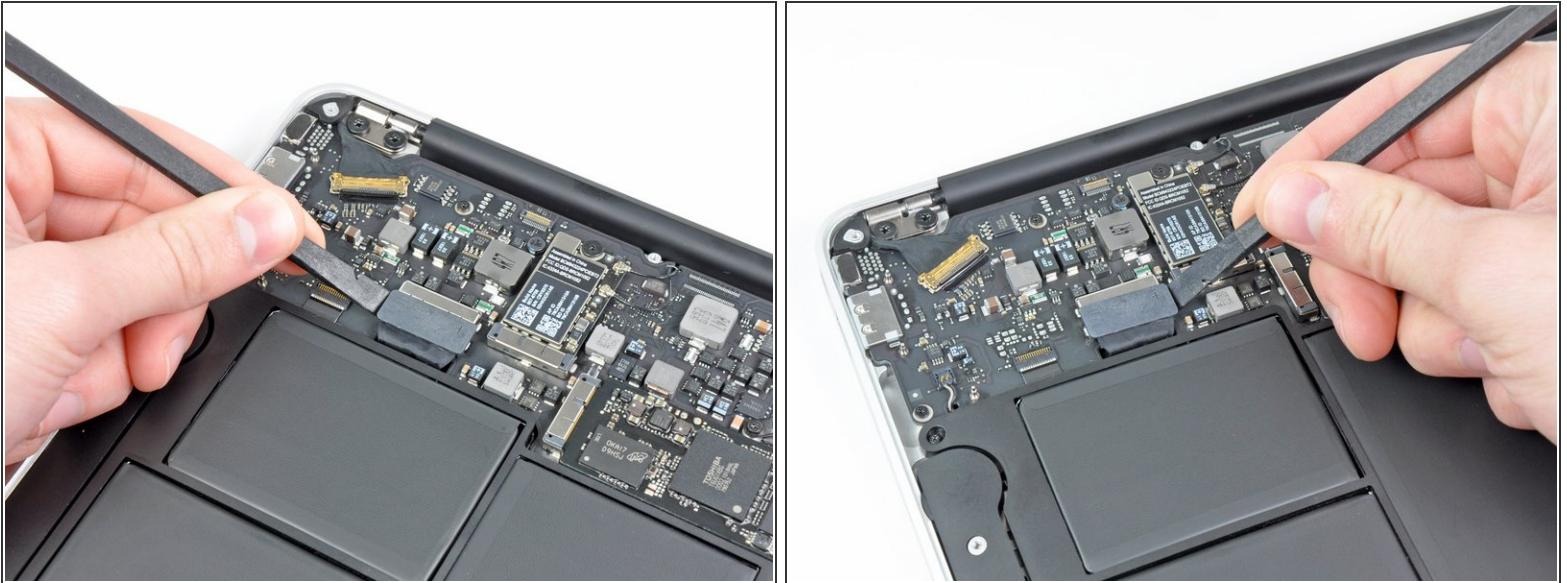
- ✦ Before proceeding, close your computer and lay it on a soft surface top-side down.
- Remove the following ten screws:
 - Two 8 mm 5-point Pentalobe screws
 - Eight 2.5 mm 5-point Pentalobe screws
- i The special screwdriver needed to remove the eight 5-point Pentalobe screws can be found .


Step 2



- Wedge your fingers between the display and the lower case and pull upward to pop the lower case off the Air.
- Remove the lower case and set it aside.

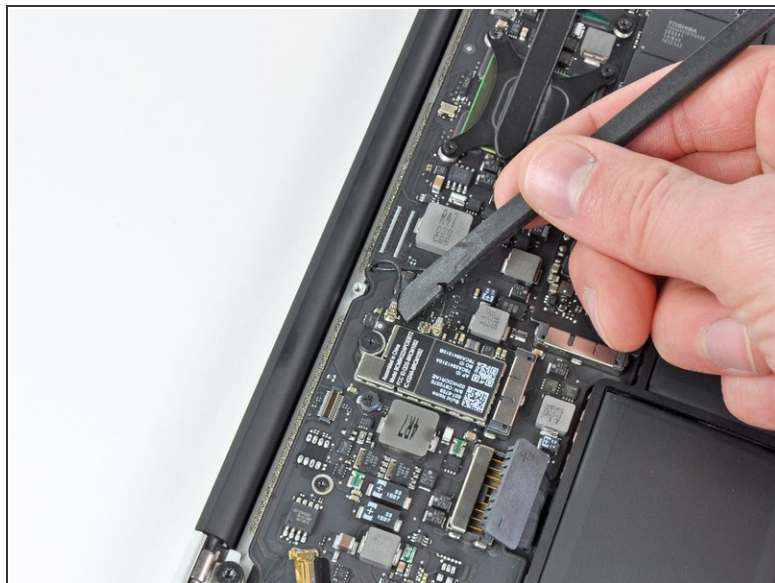
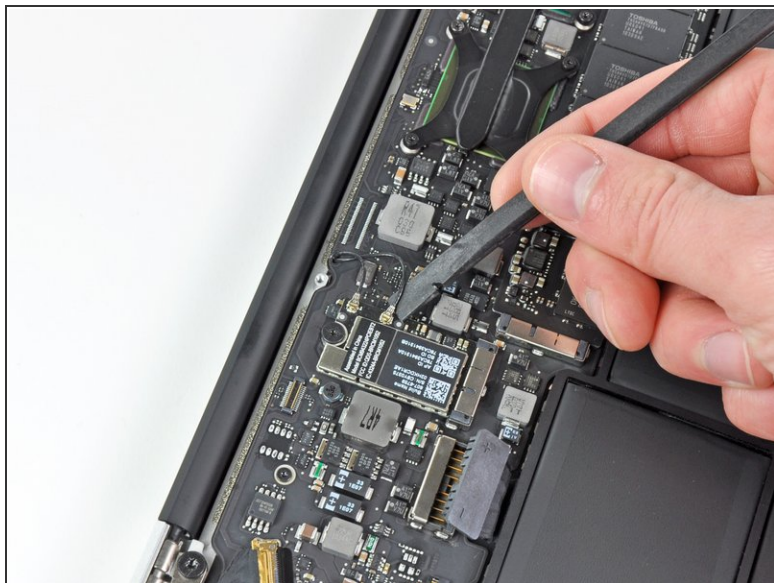
Step 3



 In this step you will disconnect the battery to help avoid shorting out any components during service.

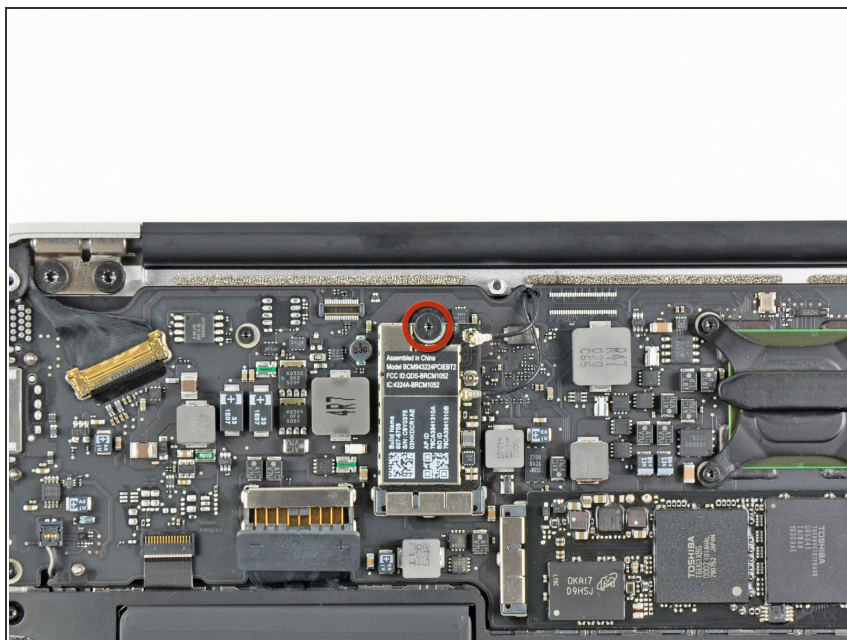
- Use the flat end of a spudger to pry both short sides of the battery connector upward to disconnect it from its socket on the logic board.
- Bend the battery cable slightly away from the logic board so the connector will not accidentally contact its socket.

Step 4



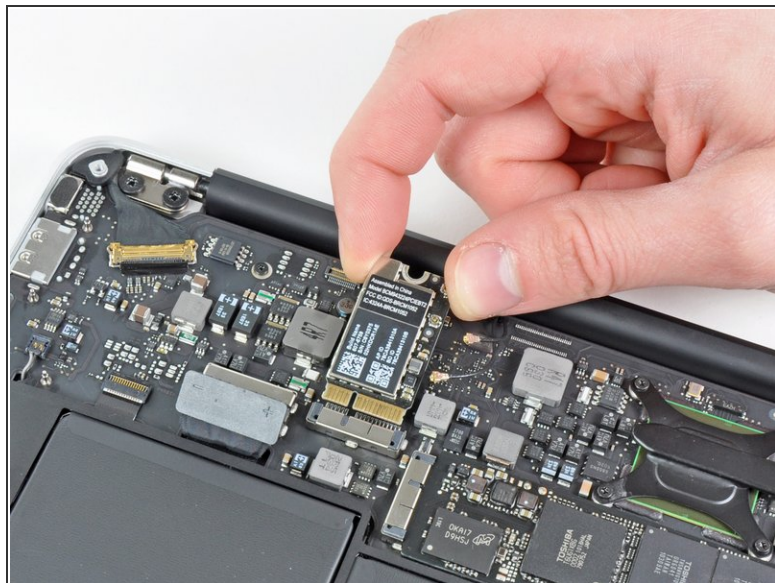
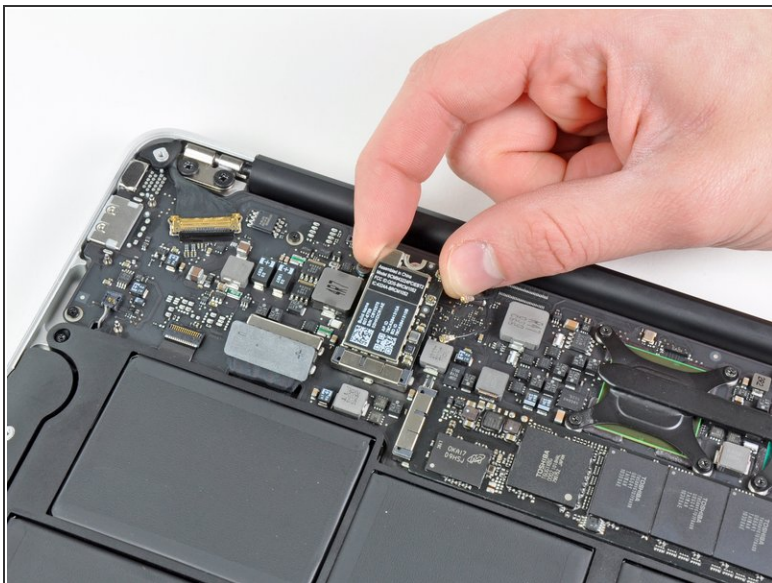
- Use the flat end of a spudger to pry both antenna connectors up from their sockets on the AirPort/Bluetooth card.

Step 5



- Remove the single 2.9 mm T5 Torx screw securing the AirPort/Bluetooth card to the logic board.

Step 6



- Slightly lift the free end of the AirPort/Bluetooth board and pull it out of its socket on the logic board.
- Remove the AirPort/Bluetooth board from the Air.

To reassemble your device, follow these instructions in reverse order.