



# MacBook Air 13" Late 2010 AirPort/Bluetooth Card Replacement

Written By: Dozuki System



# INTRODUCTION

Use this guide to replace your AirPort/Bluetooth card.

[video: <http://www.youtube.com/watch?v=GKTTs9CEB1M>]



## TOOLS:

- [P5 Pentalobe Screwdriver Retina MacBook Pro and Air](#) (1)
- [Spudger](#) (1)
- [T5 Torx Screwdriver](#) (1)



## PARTS:

- [MacBook Air \(Late 2010/Mid 2011\) AirPort/Bluetooth Board](#) (1)

## Step 1 — MacBook Air 13" Late 2010 AirPort/Bluetooth Card Replacement



- i Before proceeding, close your computer and lay it on a soft surface top-side down.
- Remove the following ten screws:
  - Two 9 mm 5-point Pentalobe screws
  - Eight 2.6 mm 5-point Pentalobe screws
- i The special screwdriver needed to remove the eight 5-point Pentalobe screws can be found .

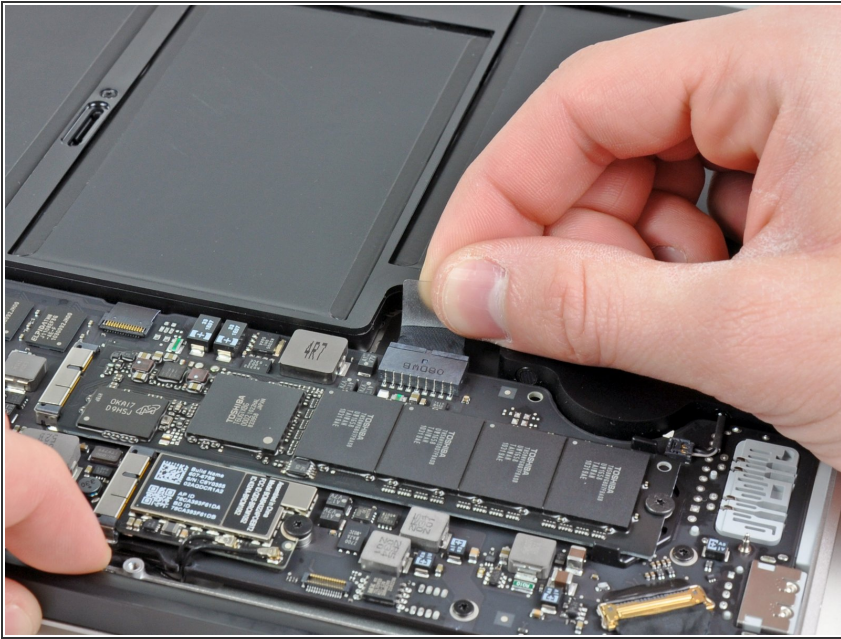
## Step 2



- Wedge your fingers between the display and the lower case and pull upward to pop the lower case off the Air.
- Remove the lower case and set it aside.



## Step 3

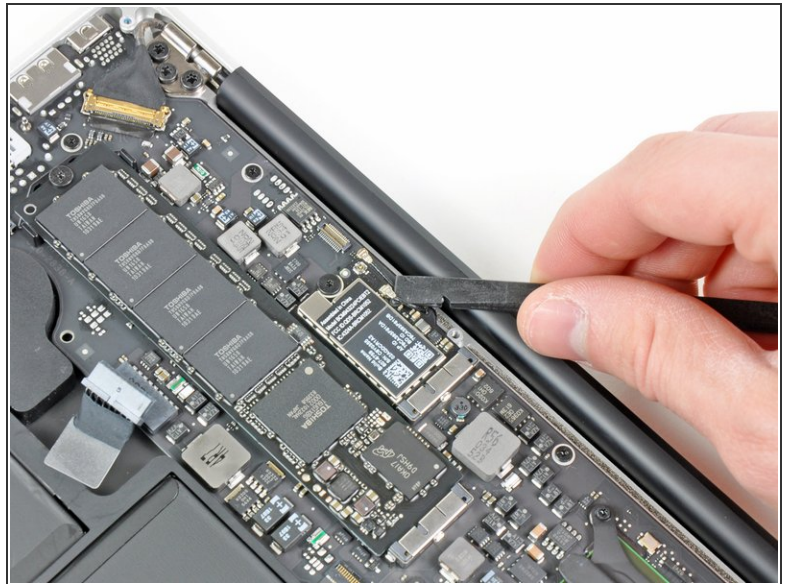
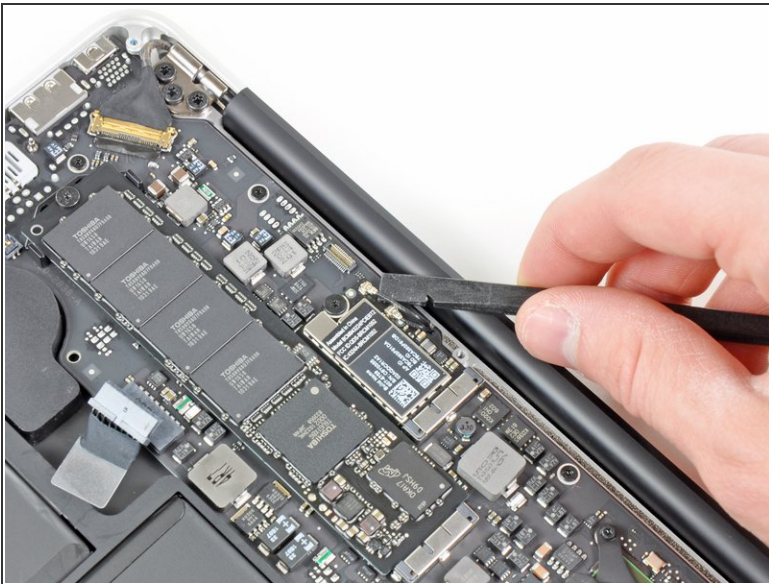


**i** For precautionary purposes, we advise that you disconnect the battery connector from the logic board to avoid any electrical discharge. This step is **optional** and is not required.

- Grab the clear plastic pull tab attached to the battery connector and pull it toward the front edge of the Air to disconnect the battery from the logic board.

**!** Do not lift upward on the connector as you disconnect it.

## Step 4

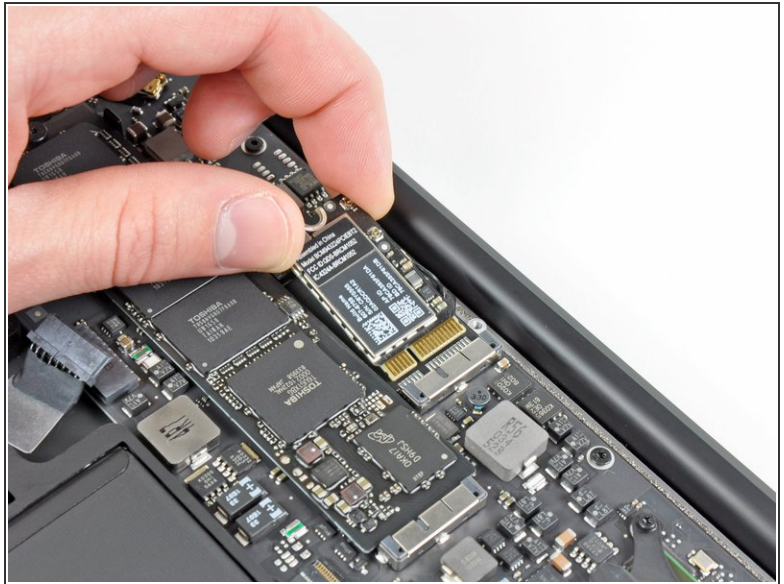
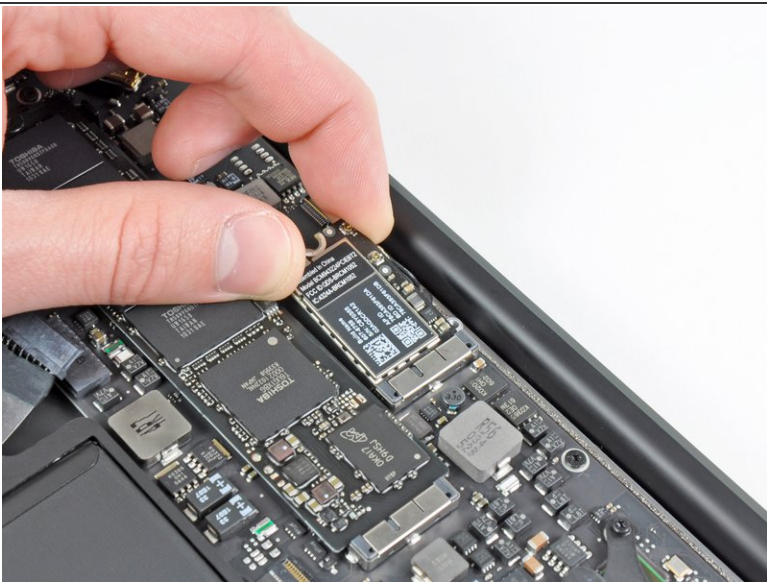


- Use the flat end of a spudger to pry both antenna connectors up from their sockets on the AirPort/Bluetooth card.



## A detailed photograph of the internal components of a Toshiba laptop, showing the motherboard, RAM modules, and various electronic components. A red circle highlights a specific screw on the motherboard. The image shows the internal layout of the laptop, including the motherboard, RAM modules, and various electronic components. A red circle highlights a specific screw on the motherboard. The image shows the internal layout of the laptop, including the motherboard, RAM modules, and various electronic components. A red circle highlights a specific screw on the motherboard.

- ## Step 6



- This document was generated on 2020-11-17 12:41:42 PM (MST).

To reassemble your device, follow these instructions in reverse order.