



# Laser Printer

Written By: nst



# INTRODUCTION

Due to the large variety of printers available on the market it is impossible to give a specific manual how to dismantle a printer. Therefore, the dismantling steps for laser printers indicated below have to be adapted from case to case. No dismantling time and average weight can be indicated.



## TOOLS:

- [Several screwdrivers \(T1\)](#) (1)
  - [Flathead Screwdriver \(T2\)](#) (1)
  - [Side cutter \(T4\)](#) (1)
  - [Pliers \(T5\)](#) (1)
  - [Industrial Scissors \(T6\)](#) (1)
  - [Power Screw Driver \(T8\)](#) (1)
  - [Industrial scale \(T9\)](#) (1)
-

## Step 1 — Laser Printer



- Remove the toner cartridge.

**⚠** Cartridges can be refilled and reused! In case they are broken, they need to be disposed of as hazardous waste.

## Step 2



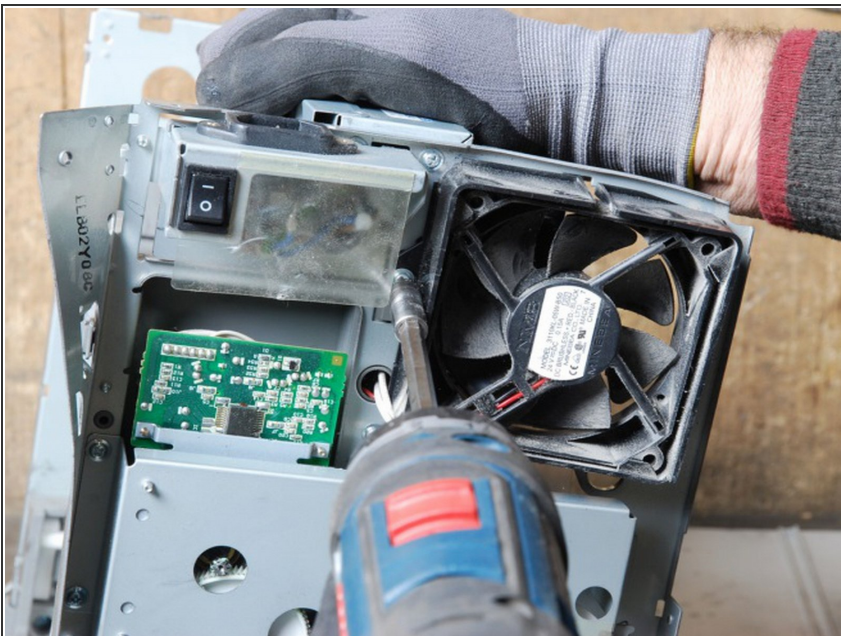
- The photoconductive drum is usually located within the cartridge.
  - Drums from older copy and fax machines may be coated with the toxic substances cadmium-sulfid or selen and should therefore be segregated and supplied to an adequate treatment.
  - To segregate the drum, remove the axis and store the photoconductive drum separately.
- ⚠** Avoid exposure to the coatings of the Cd- and Se-drums! Selenium-coated drums should be stored without exposure to light (barrel with cover)!

### Step 3



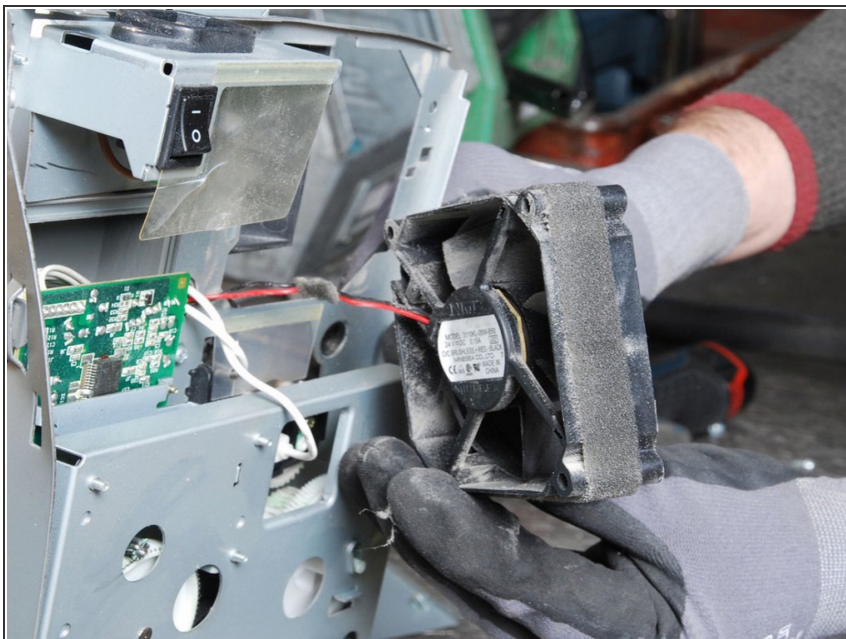
- Open the plastic casing by unscrewing all screws and removing clips. Clean the casing properly by removing all the foreign materials in the plastic such as labels, rubber mountains etc.
- Make sure the plastic parts are completely free of metal pieces.

### Step 4



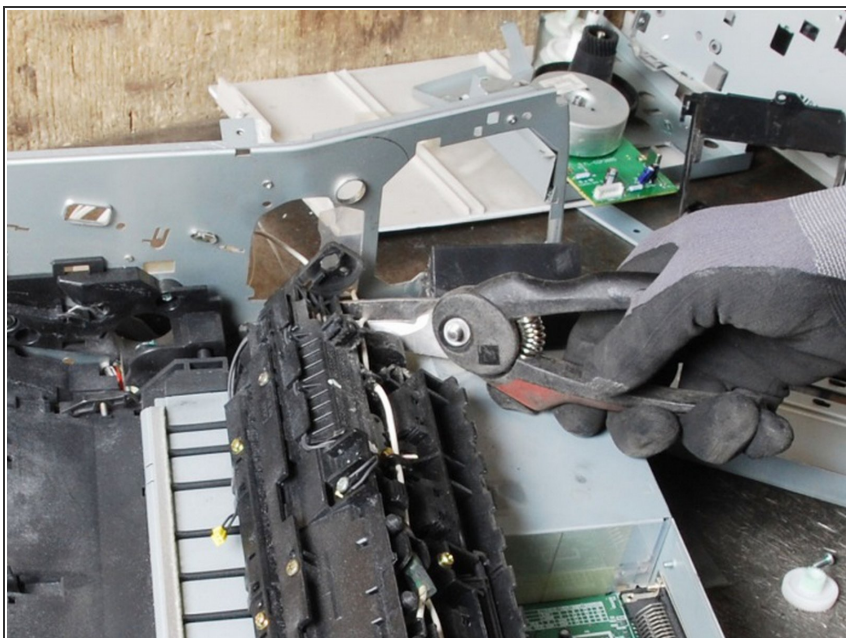
- Remove all screws and segregate the PWBs.

## Step 5



- Remove the fan.

## Step 6



- Cut off and remove the heating unit, including (brown) heated roller.

## Step 7



- Separate the remaining materials according to their type and go on with the appropriate data sheet (e.g. aluminium, ferrous metals, plastic, further PWBs, etc.).
- Make sure the plastic parts are completely free of metal pieces.