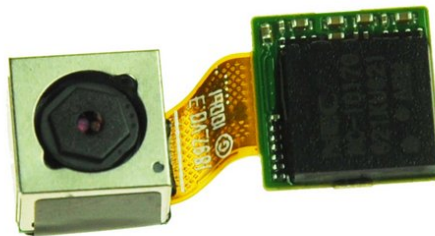




Samsung Captivate Camera Assembly Replacement

Written By: Dozuki System



INTRODUCTION

The camera assembly is susceptible to various environmental forces such as moisture, vibration, and shock. Replacing this part is easy.



TOOLS:

- [Phillips #000 Screwdriver](#) (1)
 - [Spudger](#) (1)
-

Step 1 — Samsung Captivate Camera Assembly Replacement



- Remove the back cover by pressing on the bottom section of the phone and sliding the bottom piece downward.
- Lift up the back cover.

Step 2



- Place your finger on the bottom of the battery and lift to remove.

Step 3



- Replace the old battery with the new one.

Step 4



- Insert the spudger underneath the bottom section of the phone.
- Gently lift and push the spudger to slide the bottom section down to reveal two hidden screws.

Step 5



- Remove the six 4.5mm #000 Phillips screws.

Step 6



- Starting at a bottom corner, use the spudger to separate the rear case from the front display.
 - Move the spudger towards the top on both sides. The plastic opening tool is easier to use for this step.
- ⚠ Be careful when detaching the top. Free each side, stopping short of the center of the cover. Apply backward pressure on both corners with a finger applying pressure on the center, and slide the whole back cover toward the bottom of the device. Note: forcing the cover can result in cracked plastic.

Step 7



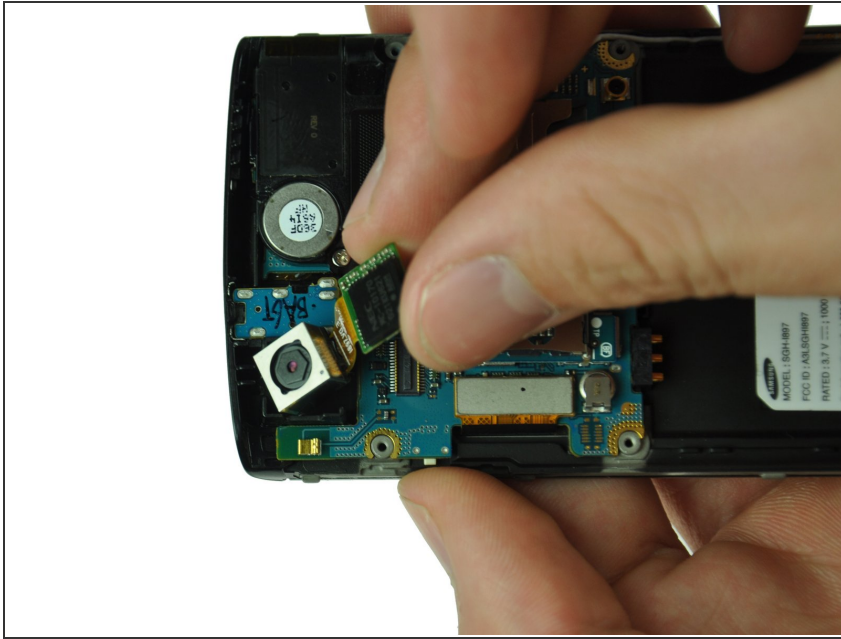
- Separate the rear case from the phone.

Step 8



- Use the spudger tool to pry up the chip labeled "NEC." This releases the chip.

Step 9



- Gently lift the camera assembly out of the plastic housing.

To reassemble your device, follow these instructions in reverse order.