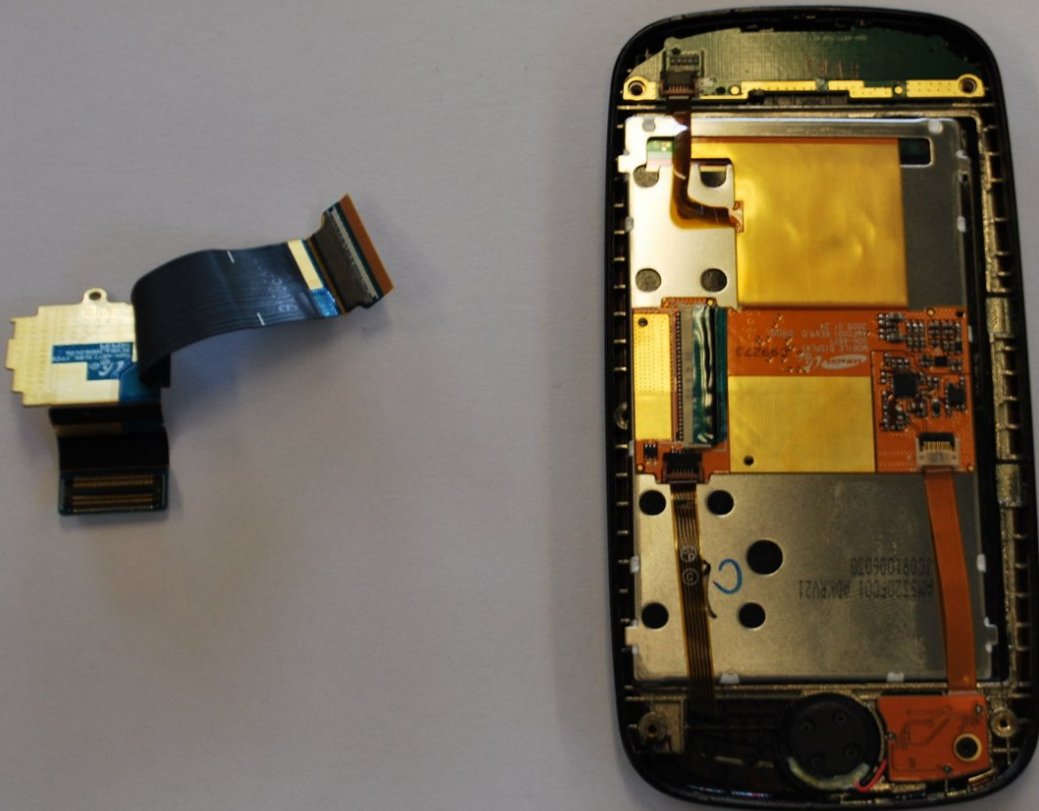




Samsung Impression LCD Flex Cable Replacement

Written By: Dozuki System



INTRODUCTION

How to remove & replace the phone's LCD flex cable.



TOOLS:

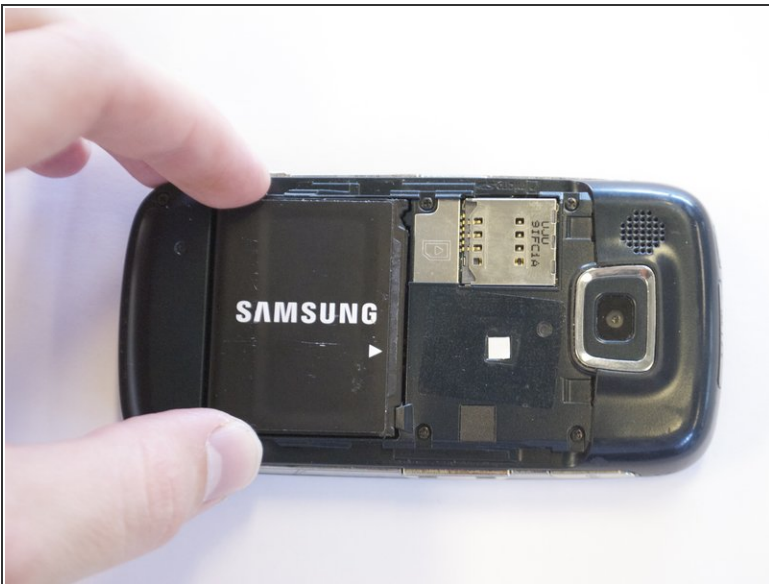
- [Phillips #0 Screwdriver](#) (1)
 - [Flathead 3/32" or 2.5 mm Screwdriver](#) (1)
-

Step 1 — Samsung Impression LCD Flex Cable Replacement



- Orient the phone with the screen facing down.
- Using your thumb, slide the back panel away from the camera to expose the battery.

Step 2



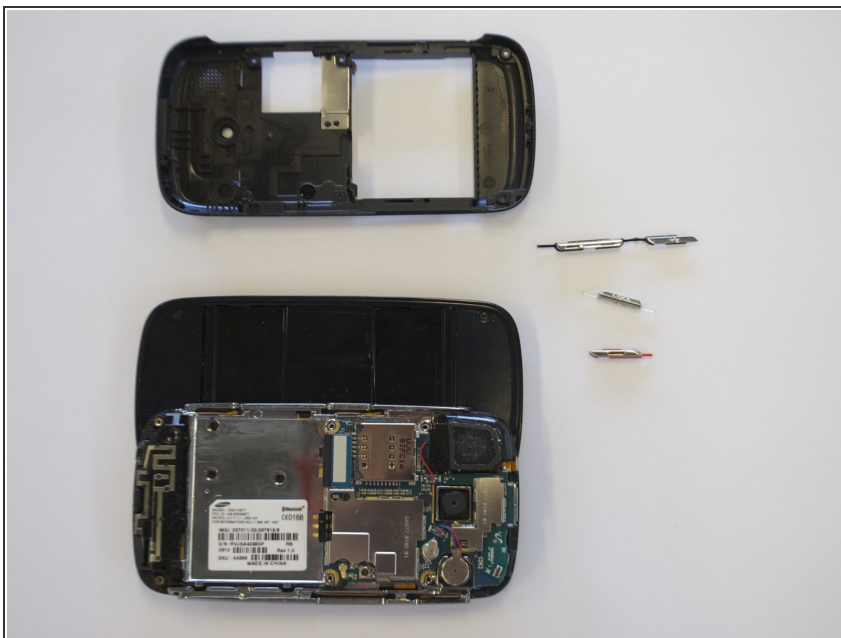
- Grip the battery on its sides, opposite the direction of the white arrow.
- Pry the battery up. It will pivot at the end with the white arrow. The battery will now be free.

Step 3



- Remove the 6 outer screws.
 - The screws should be 3.5 mm in length.
- ⚠ Put the screws in a safe place as they are very small and easy to lose.

Step 4



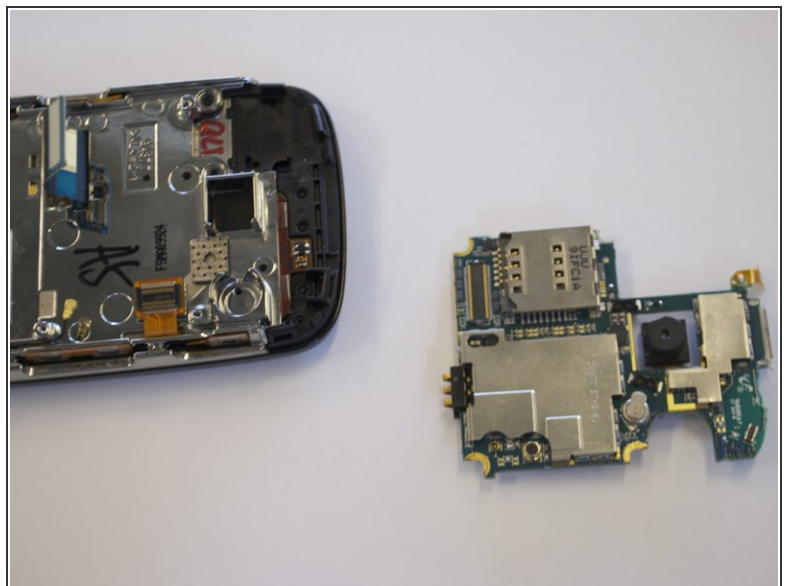
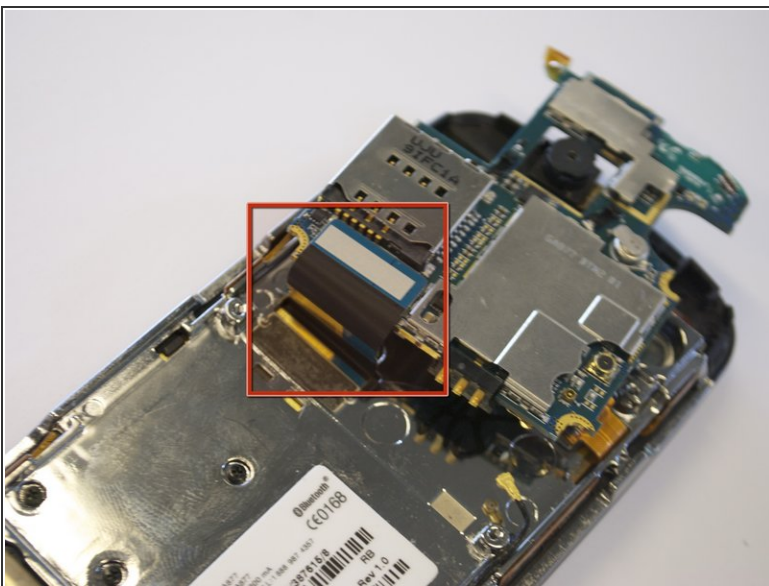
- Snap off back the cover by gently prying around the top and bottom edges with a flat head screwdriver.
 - ⓘ It may help to slide the touchscreen upwards when removing the back panel.
- The side buttons will become loose and are prone to fall out, so put these in a safe place.

Step 5



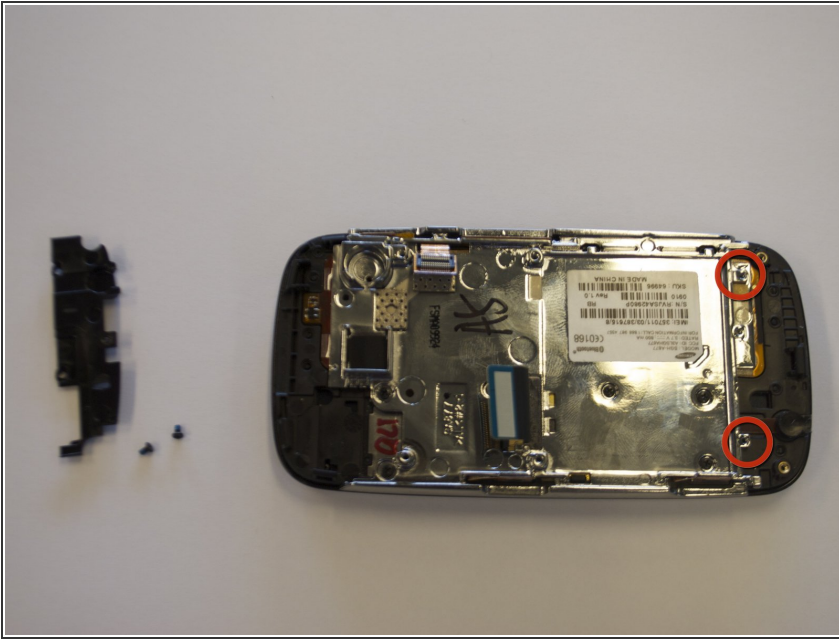
- To free the circuit board, remove the black wire that is holding it down.
- ⓘ You can remove the wire by gently prying up the gold terminator that is attached to the green circuit board. A gentle tug is all it will take.

Step 6



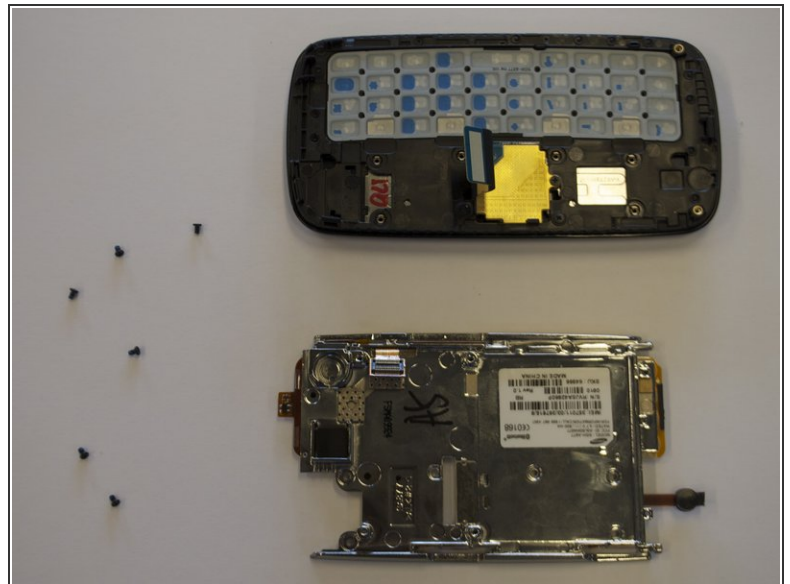
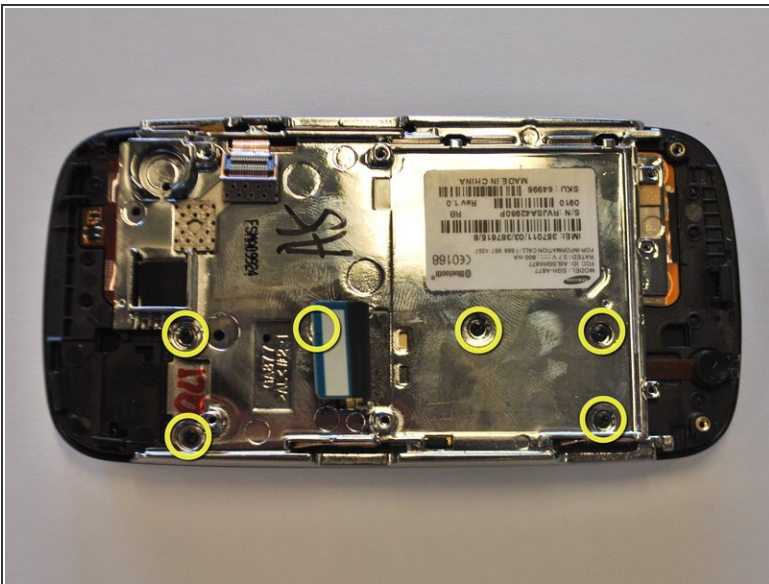
- The circuit board will still be held on by a blue and black ribbon that is removed by gently pulling it upwards.

Step 7



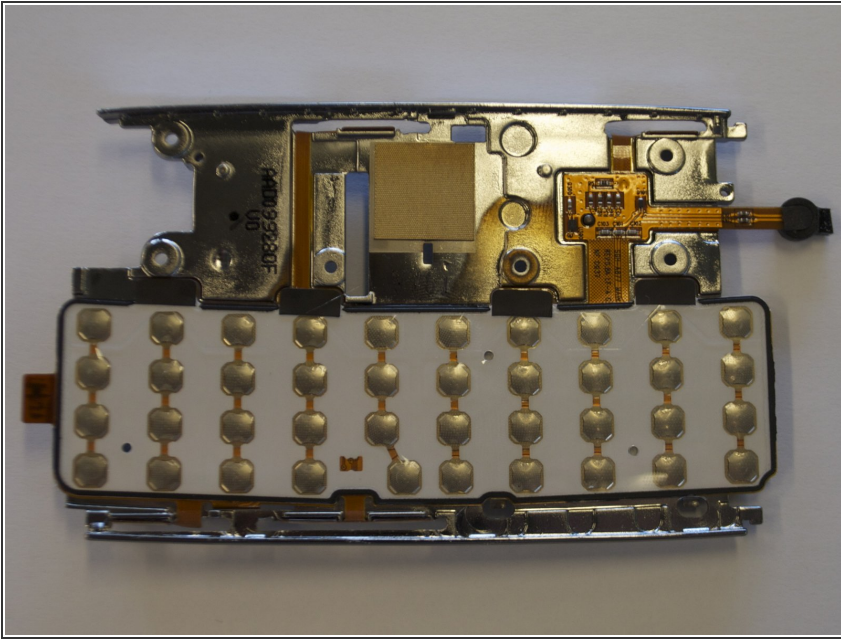
- Remove the two base screws along the edge of the silver piece, where you just removed the black end piece.
- The screws are 2.7mm in length.
- The bottom black end cap will snap out.

Step 8



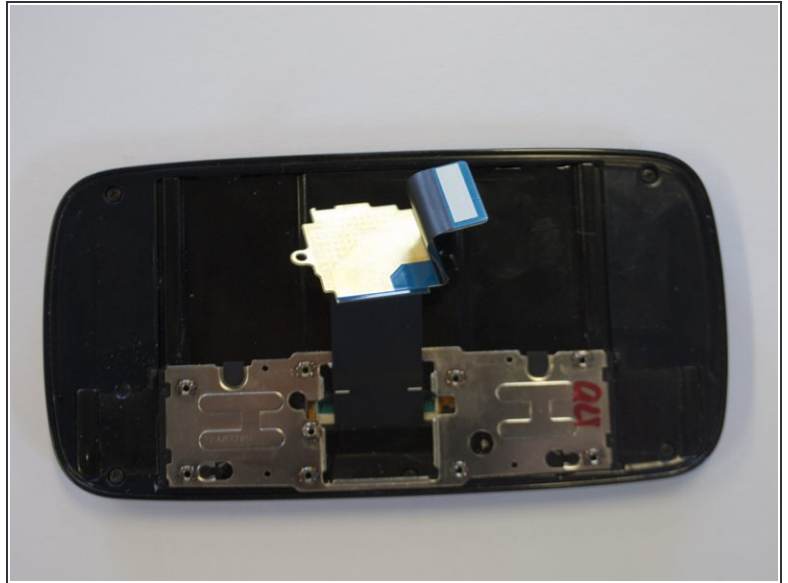
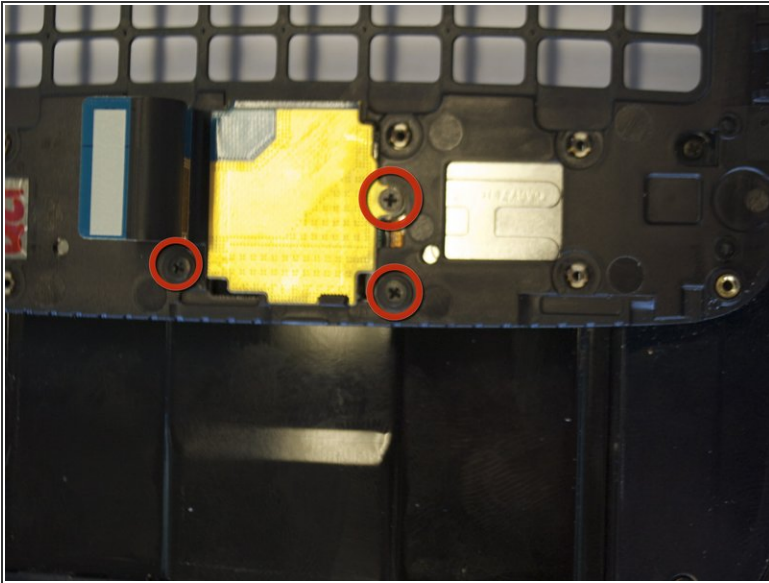
- Remove 6 screws holding the silver plate on.
 - 2.7mm in length
- The keys will peel right out of the screen side of the phone.

Step 9



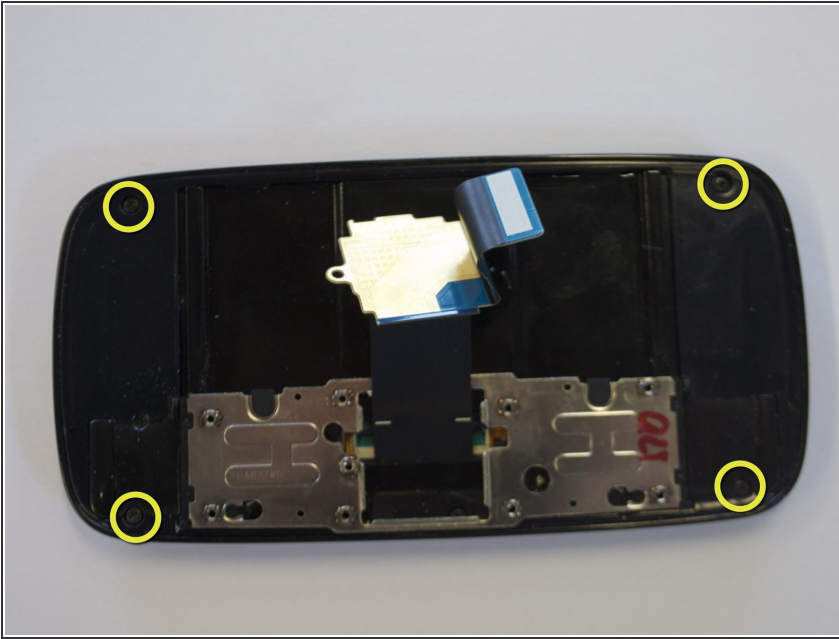
- The silver piece you are left with is the physical keyboard assembly.

Step 10



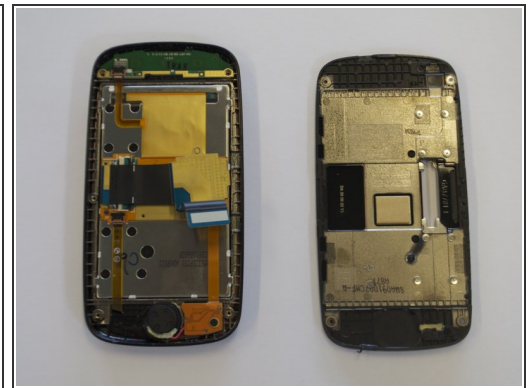
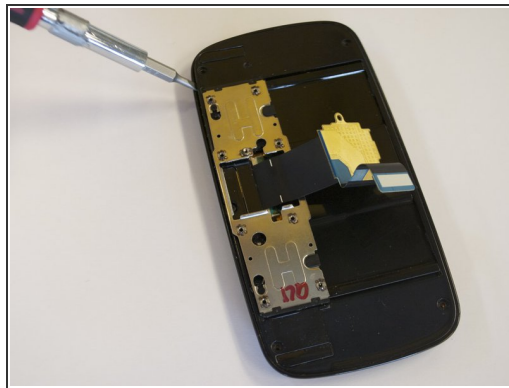
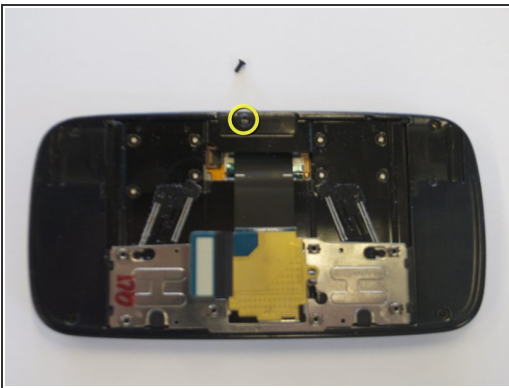
- Remove the 3 screws holding down the flex cable.
- The screws are 2.0 mm in length.
- The screw that goes through the circle port on the flex cable is longer at 2.3mm long.
- The keyboard slider frame will come off and the flex cable exposed, but not free.

Step 11



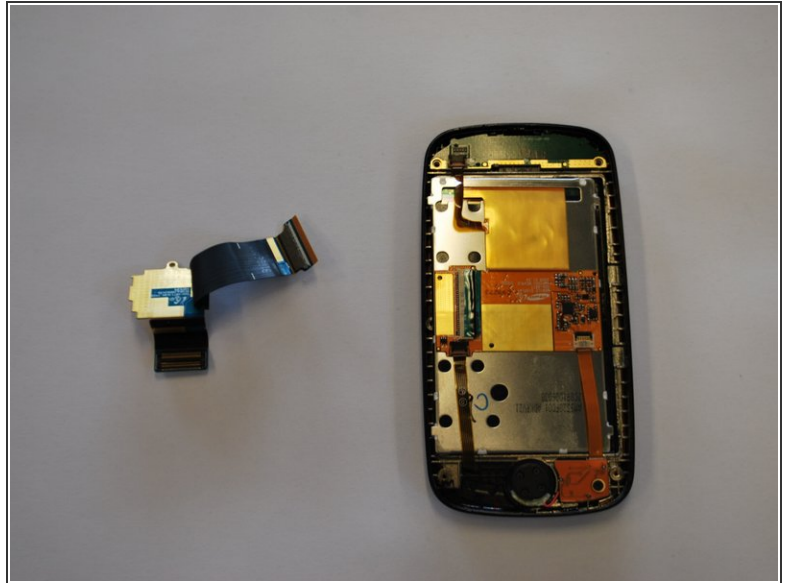
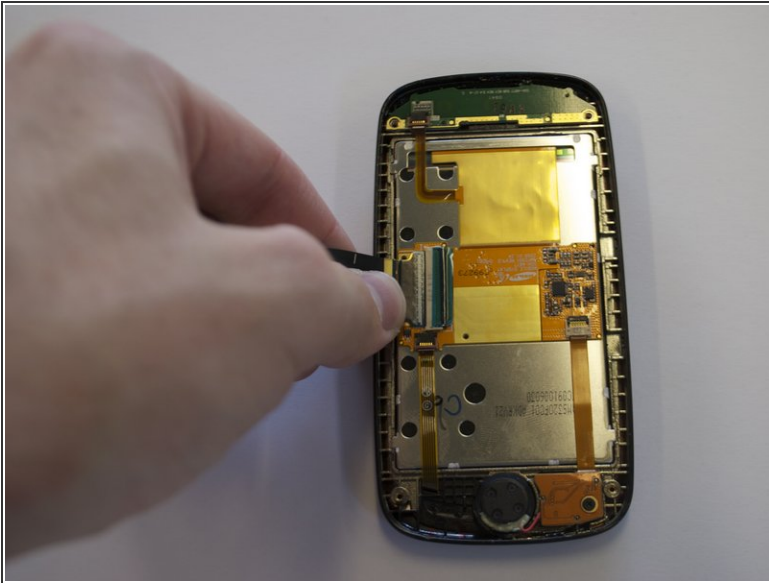
- Remove 4 outer screws.
- The screws are 3.5mm in length.

Step 12



- Slide the phone apart, and remove a 5th screw (3.5 mm).
- Remove the outer shell by prying the edges off with your fingers, or a small screwdriver. (second image, taken before the image for above instruction)
- The device will now be in two pieces

Step 13



- Lift the tab underneath the blue tape and gently pull the flex cable.
- The flex cable will now be completely free.

To reassemble your device, follow these instructions in reverse order.