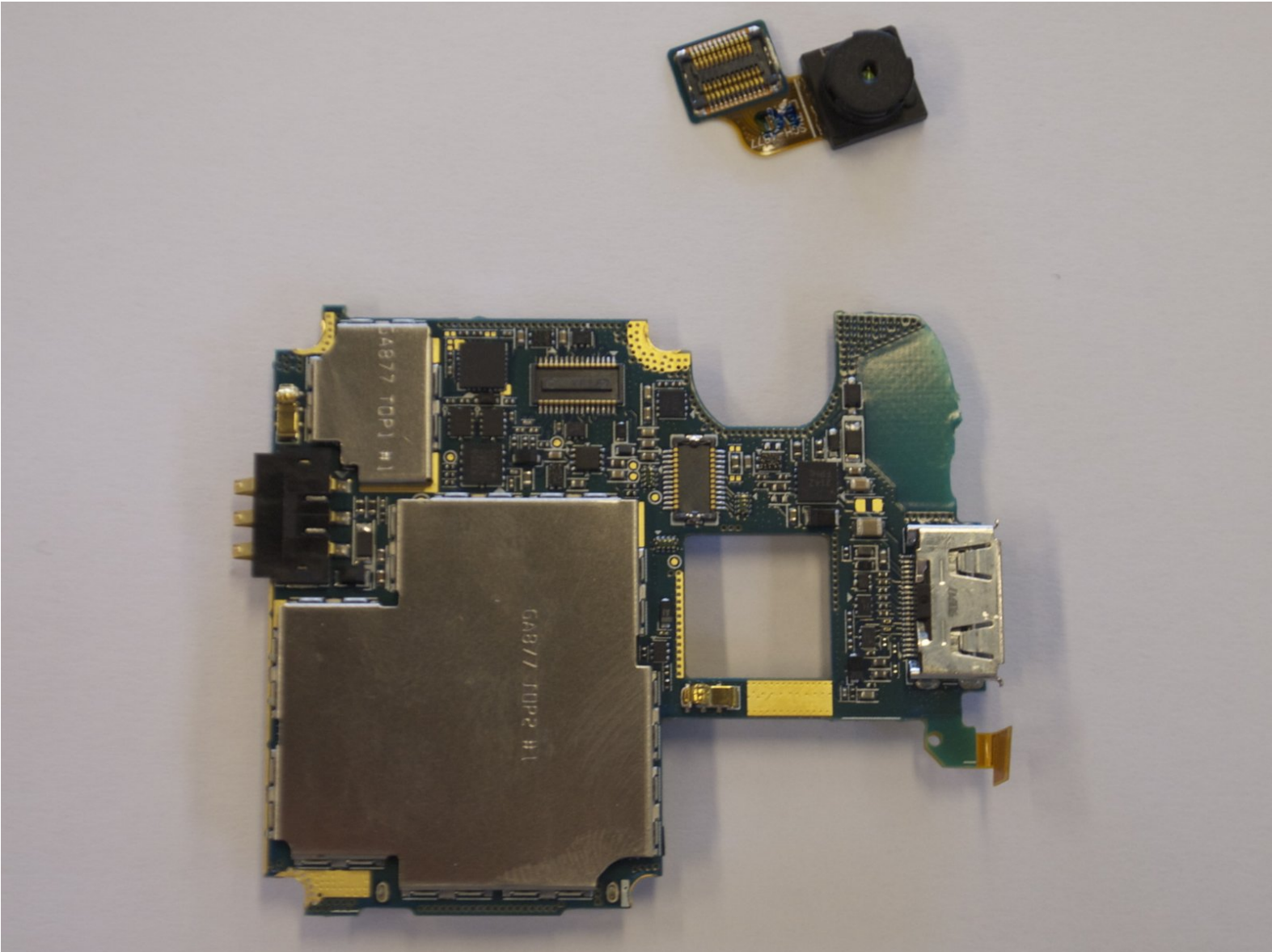




Samsung Impression Camera Replacement

Written By: Dozuki System



INTRODUCTION

How to remove & replace the phone's back camera.



TOOLS:

- [Phillips #00 Screwdriver](#) (1)
-

Step 1 — Samsung Impression Camera Replacement



- Orient the phone with the screen facing down.
- Using your thumb, slide the back panel away from the camera to expose the battery.

Step 2



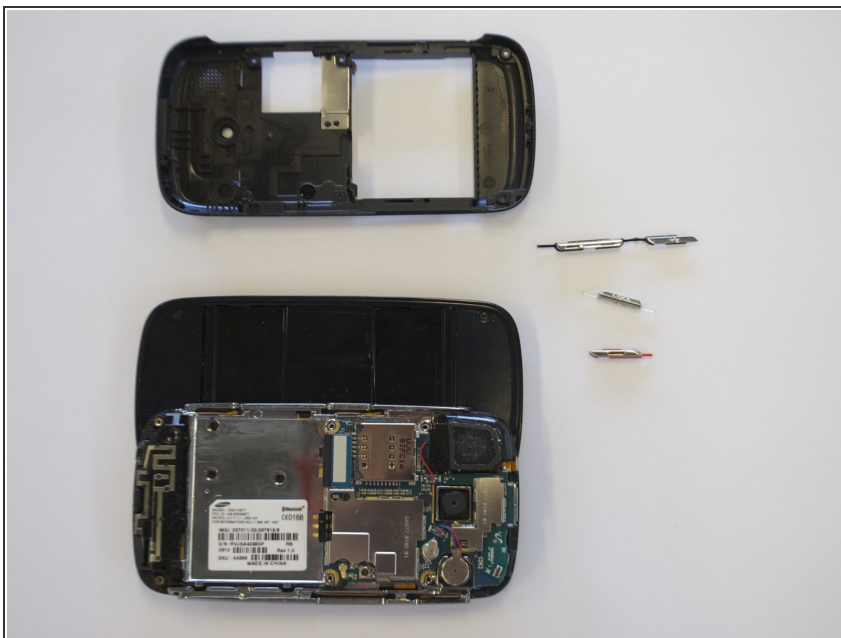
- Grip the battery on its sides, opposite the direction of the white arrow.
- Pry the battery up. It will pivot at the end with the white arrow. The battery will now be free.

Step 3



- Remove the 6 outer screws.
 - The screws should be 3.5 mm in length.
- ⚠ Put the screws in a safe place as they are very small and easy to lose.

Step 4



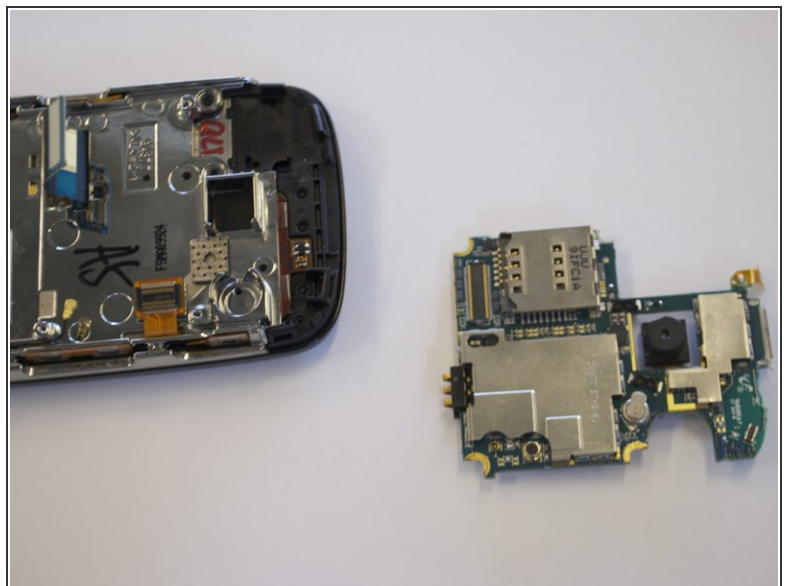
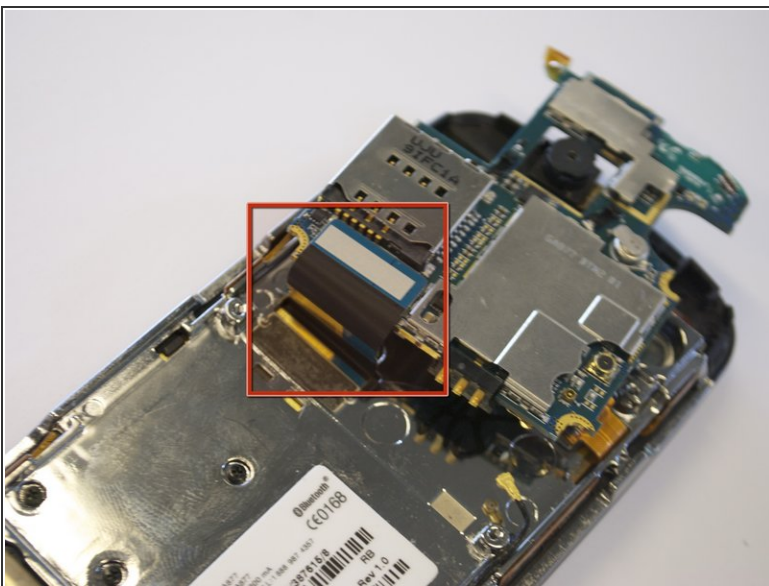
- Snap off back the cover by gently prying around the top and bottom edges with a flat head screwdriver.
 - ⓘ It may help to slide the touchscreen upwards when removing the back panel.
- The side buttons will become loose and are prone to fall out, so put these in a safe place.

Step 5



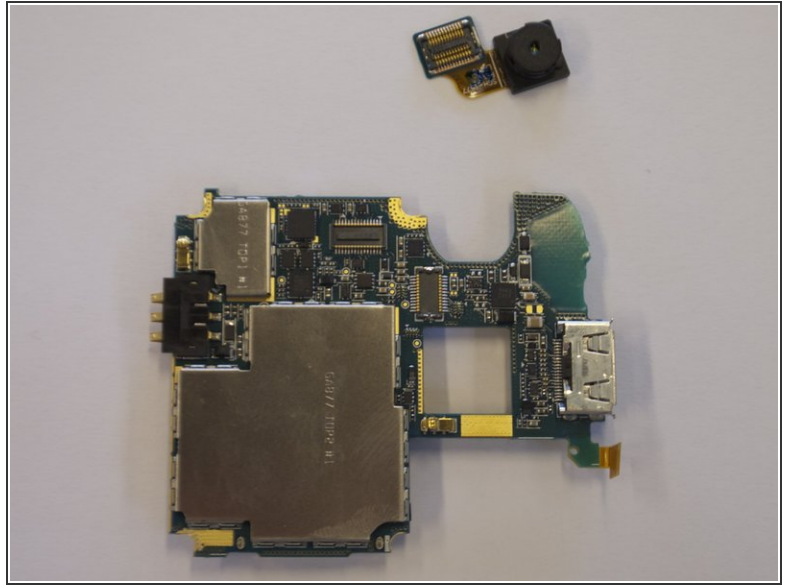
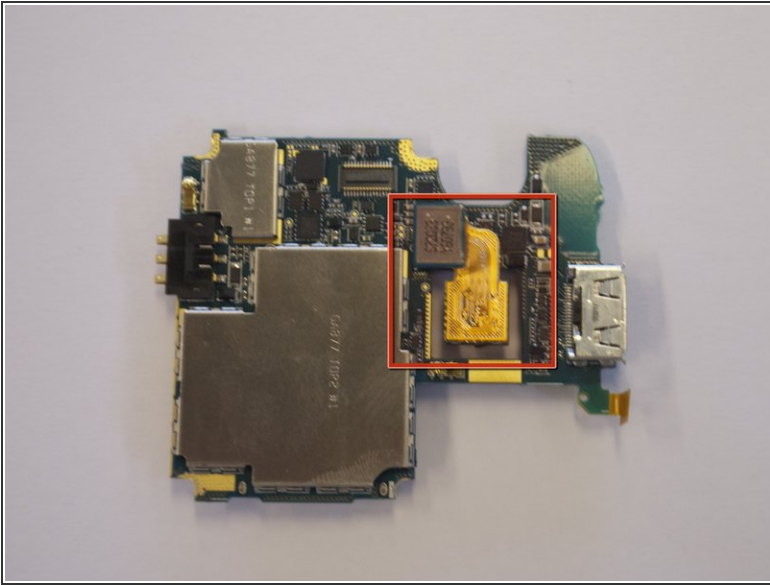
- To free the circuit board, remove the black wire that is holding it down.
- ① You can remove the wire by gently prying up the gold terminator that is attached to the green circuit board. A gentle tug is all it will take.

Step 6



- The circuit board will still be held on by a blue and black ribbon that is removed by gently pulling it upwards.

Step 7



- Turn the circuit board over.
- The bottom of the camera will have a gold ribbon coming out of it which attaches to the circuit board.
- Pull upwards on the blue rectangle where the gold ribbon ends. This will remove the camera from the circuit board.

To reassemble your device, follow these instructions in reverse order.