



# Samsung Instinct LCD screen Replacement

Written By: Dozuki System



---

## INTRODUCTION

---



### TOOLS:

- [Phillips #00 Screwdriver](#) (1)
  - [Plastic Opening Tools](#) (1)
-

## Step 1 — Samsung Instinct LCD screen Replacement



- Applying pressure to the back cover, slide the cover forward towards the camera.
- Lift the back cover off the phone.

## Step 2



- Hold the phone firmly in one hand and lift the battery up by using the notches to grip the battery.

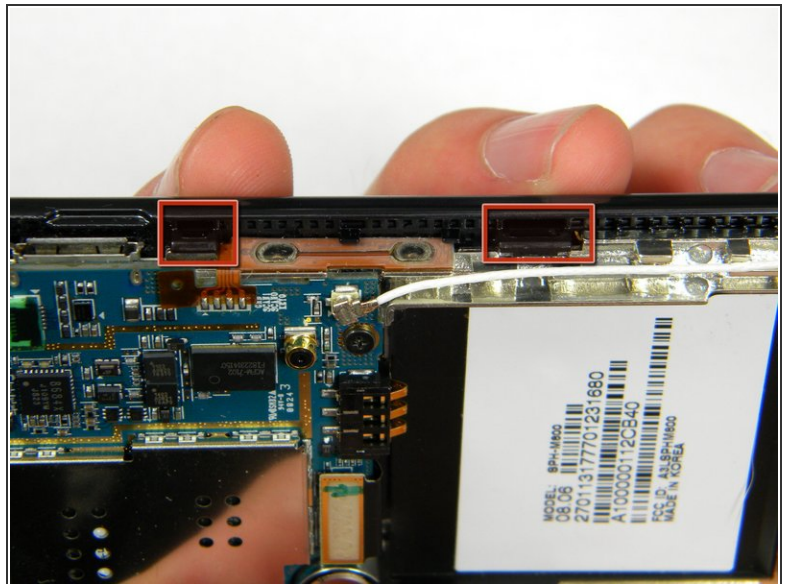


### Step 3



- Remove the four 4.45mm screws at the corners of the phone.

### Step 4



- Use the plastic opener tool to unhook the locks around the edges of the phone.
- ⓘ Do not worry about the inner components of the phone, they are not connected to this case.

## Step 5



- Lift the casing off of the phone.

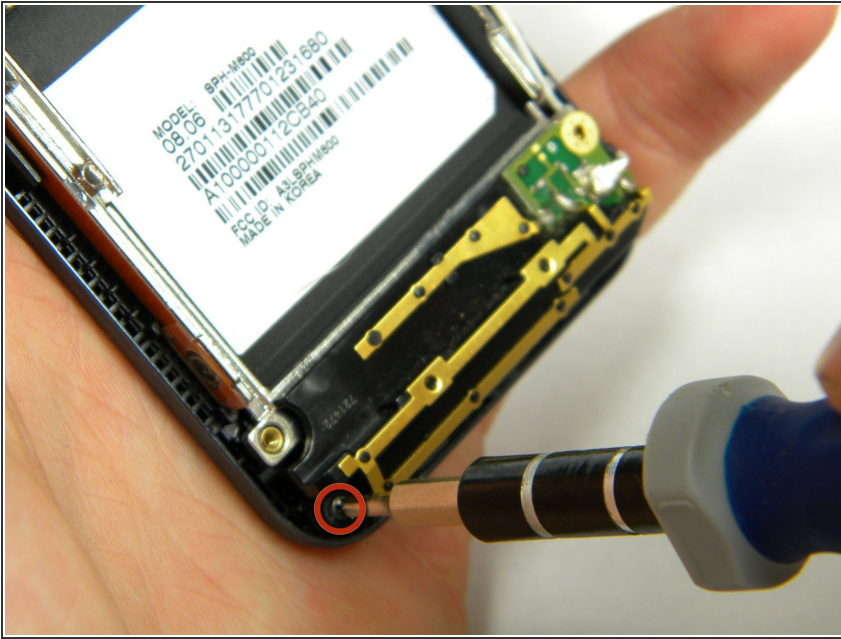
## Step 6



- With the screws removed, locate the antenna.

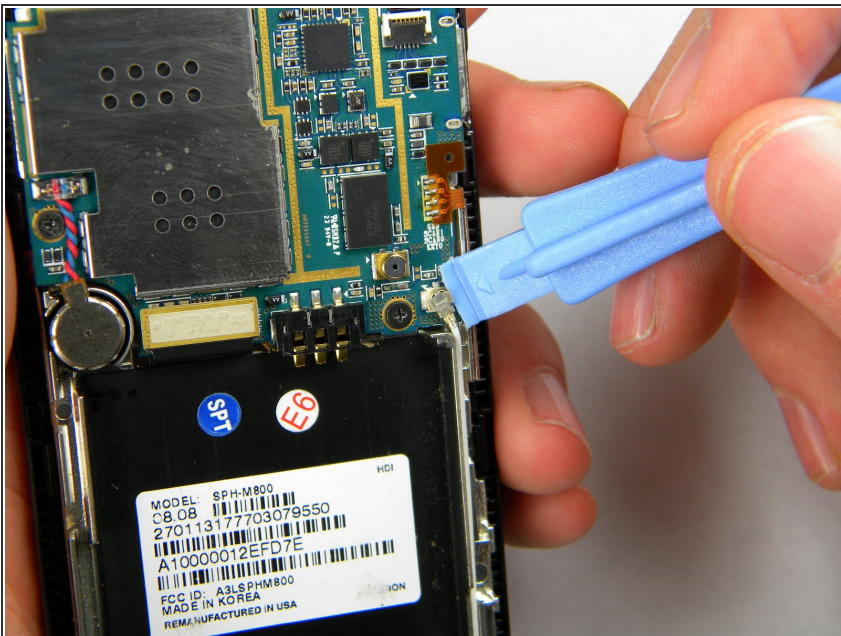


## Step 7



- Using a phillips-head screwdriver, remove the 4.50mm screw holding the antenna in place.

## Step 8



- Using the plastic opener tool, squeeze gently on the antenna cable connector and lift to remove the connector from its position.

## Step 9



- Gently lift up on the antenna and remove it from the back of the device.

## Step 10



- Remove the two 3.50mm screws connecting the motherboard to the case.

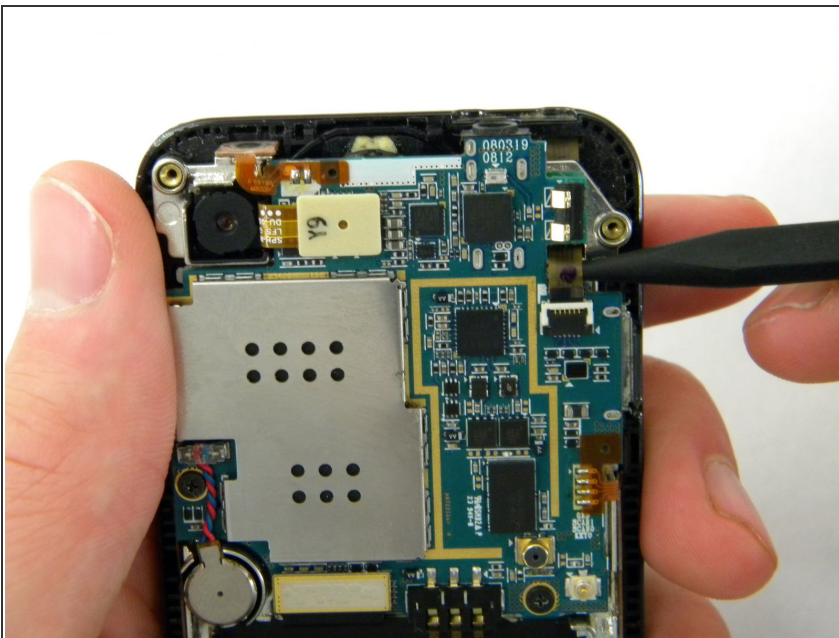


## Step 11



- Use the plastic opener tool to detach the three ribbons on the motherboard.

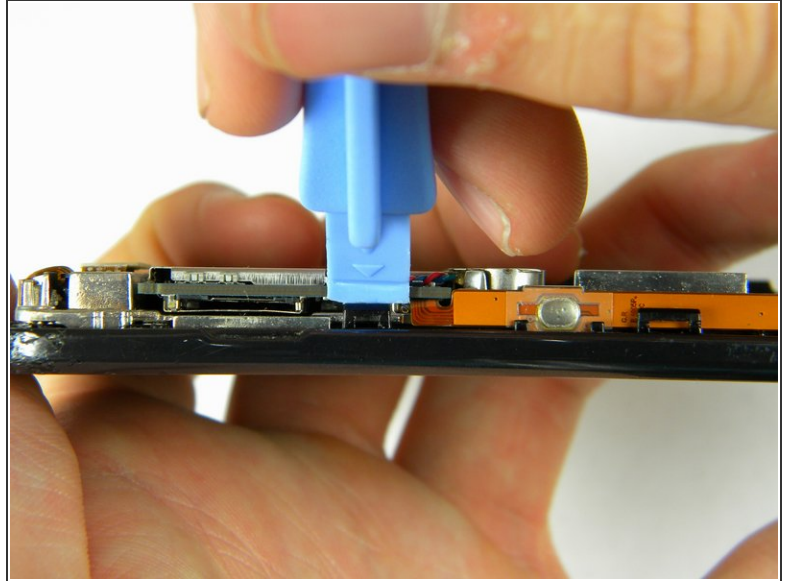
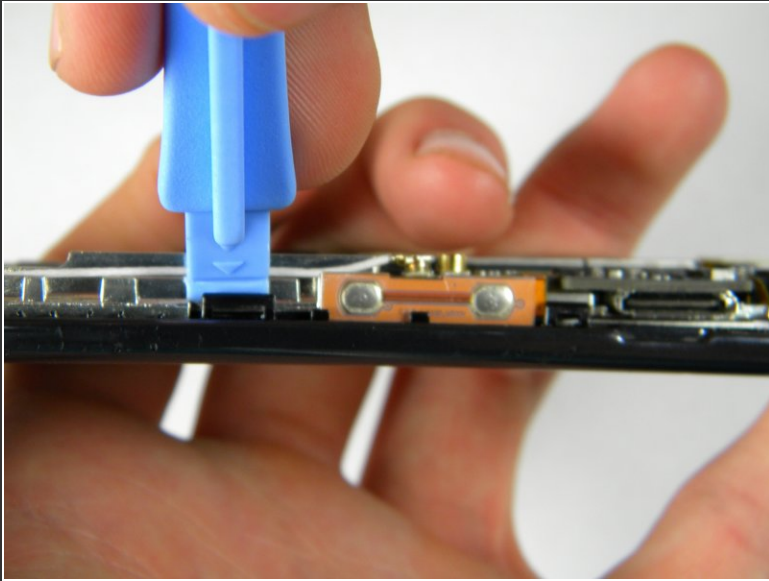
## Step 12



- Lift out the top right ribbon from its slot on the motherboard.

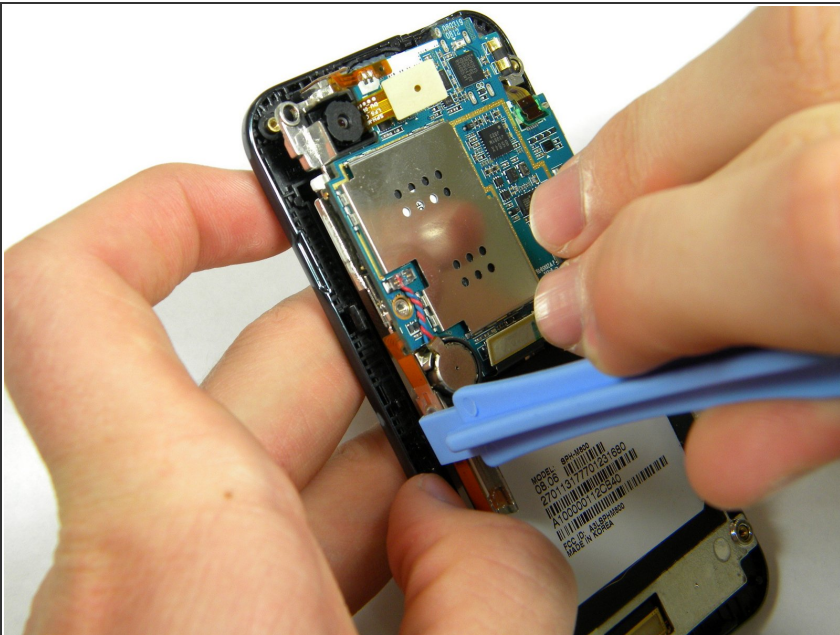


### Step 13



- Use the plastic opener tool to unhinge the the locks on the side of the motherboard connecting it to the front casing.

### Step 14



- Lift the motherboard away from the front casing.

## Step 15



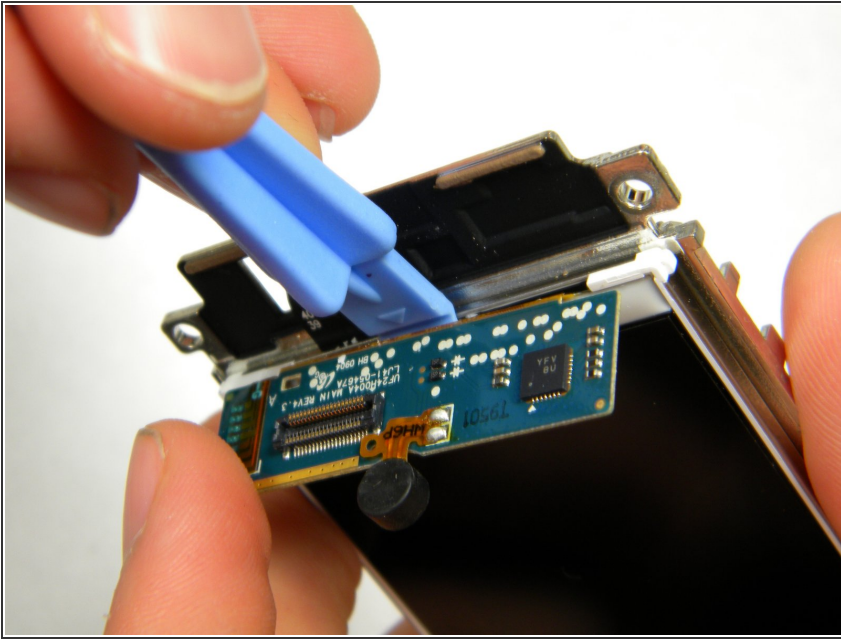
- After removing lifting up on the motherboard, the front casing and center frame should be separated as shown.

## Step 16



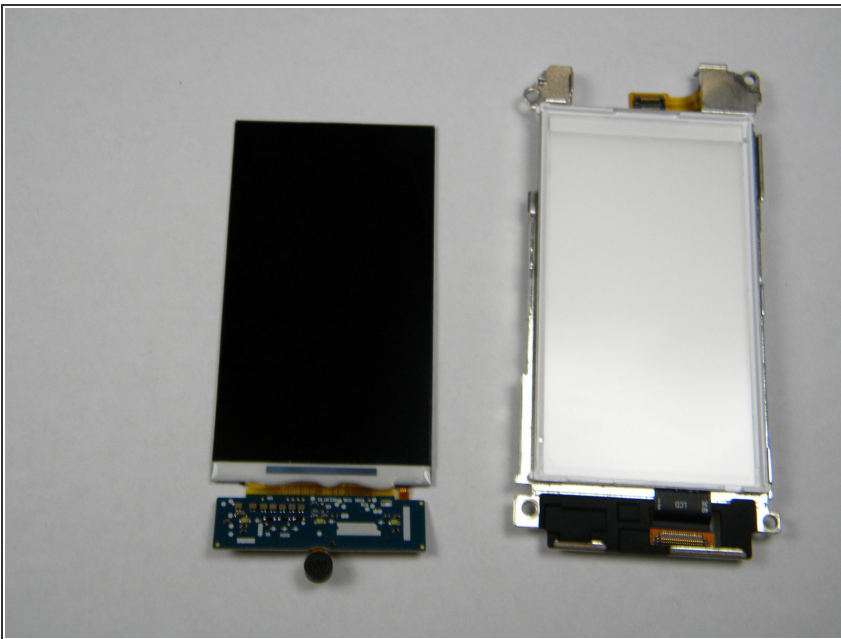
- Using the plastic opener tool, detach the ribbon located on the bottom of the phone below the battery compartment.

## Step 17



- Lift the microchip (located at the bottom of the phone) and insert the plastic opener tool under the screen.
- Lift up the screen. The microchip is attached to the screen and will be lifted out with the screen.

## Step 18



- After lifting out the LCD screen, the screen and its housing should be separated as shown.

To reassemble your device, follow these instructions in reverse order.