



Samsung Instinct Front Case Replacement

Written By: Dozuki System



INTRODUCTION



TOOLS:

- [Phillips #00 Screwdriver](#) (1)
 - [Plastic Opening Tools](#) (1)
-

Step 1 — Samsung Instinct Front Case Replacement



- Applying pressure to the back cover, slide the cover forward towards the camera.
- Lift the back cover off the phone.

Step 2



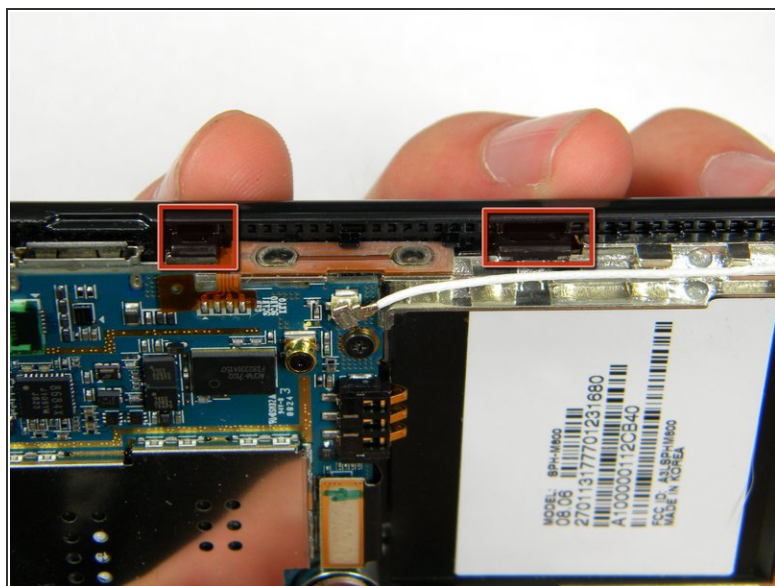
- Hold the phone firmly in one hand and lift the battery up by using the notches to grip the battery.

Step 3



- Remove the four 4.45mm screws at the corners of the phone.

Step 4



- Use the plastic opener tool to unhinge the locks around the edges of the phone.
- ⓘ Do not worry about the inner components of the phone, they are not connected to this case.

Step 5



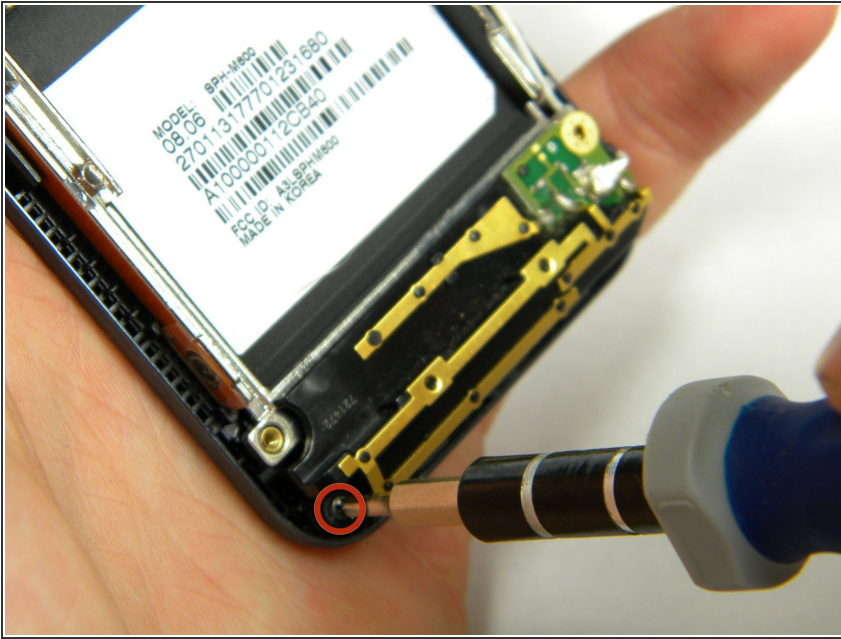
- Lift the casing off of the phone.

Step 6



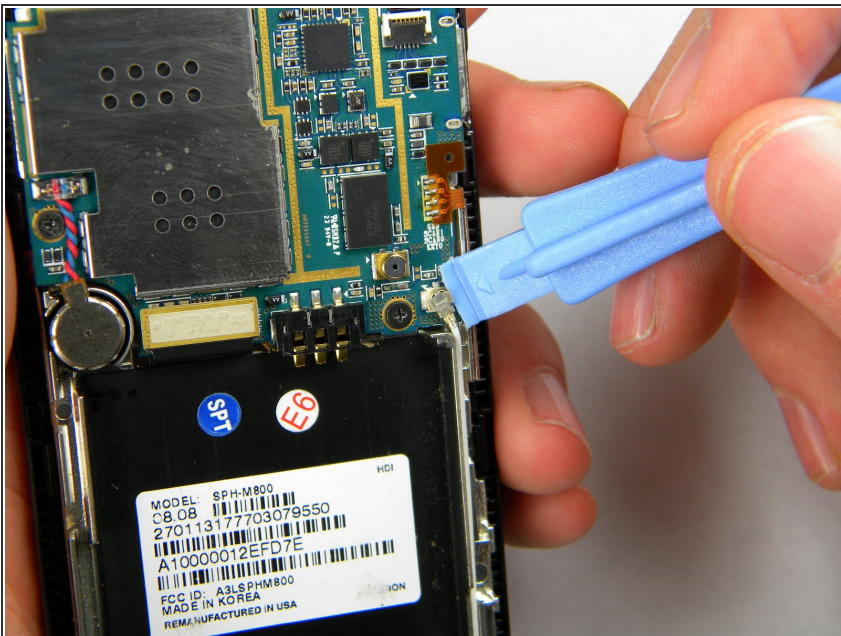
- With the screws removed, locate the antenna.

Step 7



- Using a phillips-head screwdriver, remove the 4.50mm screw holding the antenna in place.

Step 8



- Using the plastic opener tool, squeeze gently on the antenna cable connector and lift to remove the connector from its position.

Step 9



- Gently lift up on the antenna and remove it from the back of the device.

Step 10



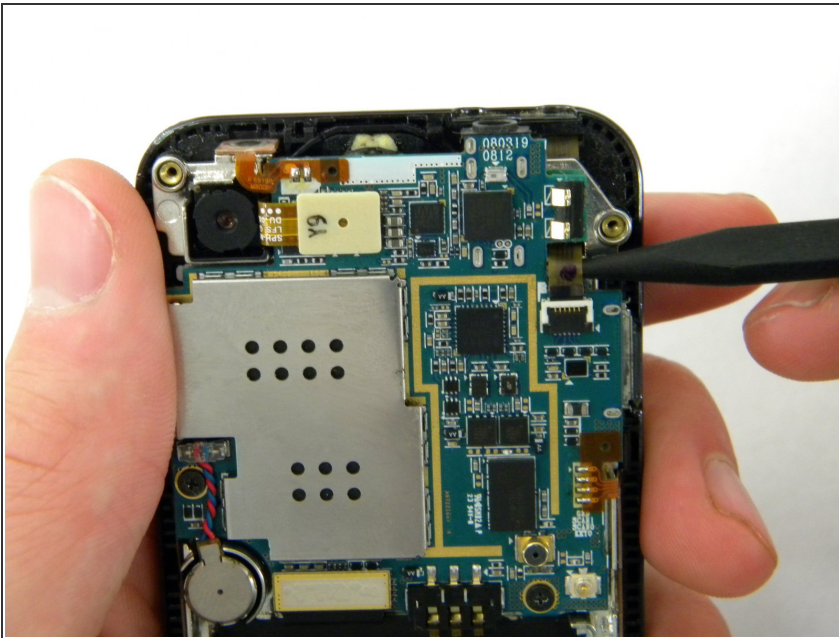
- Remove the two 3.50mm screws connecting the motherboard to the case.

Step 11



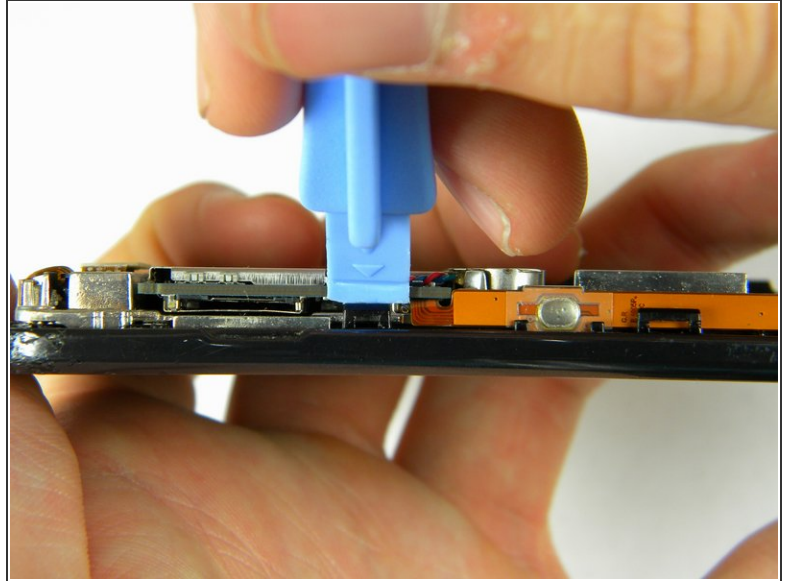
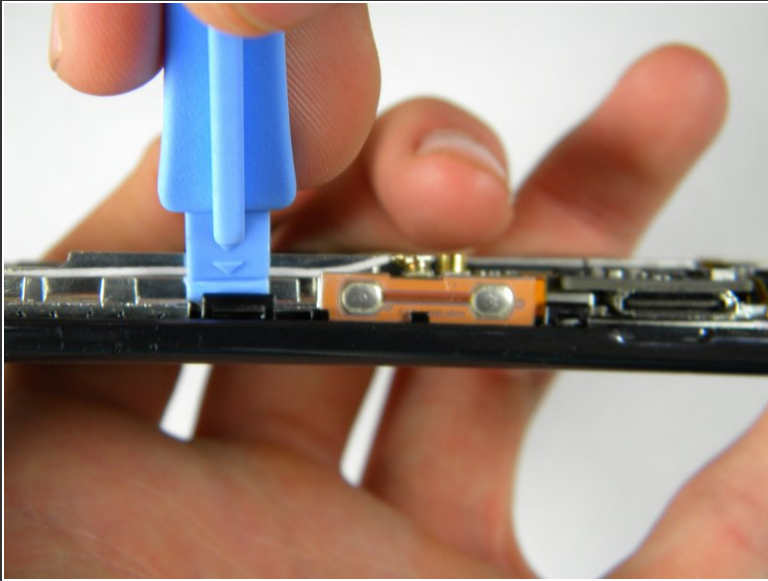
- Use the plastic opener tool to detach the three ribbons on the motherboard.

Step 12



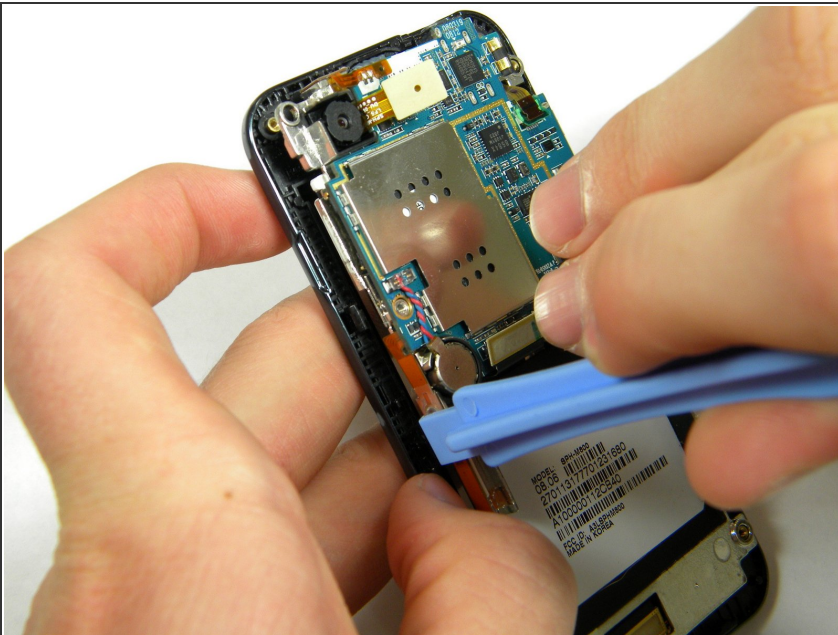
- Lift out the top right ribbon from its slot on the motherboard.

Step 13



- Use the plastic opener tool to unhook the the locks on the side of the motherboard connecting it to the front casing.

Step 14



- Lift the motherboard away from the front casing.

Step 15



- After removing lifting up on the motherboard, the front casing and center frame should be separated as shown.

To reassemble your device, follow these instructions in reverse order.