



# Samsung Instinct Speaker Replacement

Written By: Dozuki System



## INTRODUCTION

This guide shows all the steps leading up to, and including, removing the speaker so that a new one can be installed.



### TOOLS:

- [Phillips #00 Screwdriver](#) (1)
  - [Tweezers](#) (1)
  - [Plastic Opening Tools](#) (1)
-

## Step 1 — Samsung Instinct Speaker Replacement



- Applying pressure to the back cover, slide the cover forward towards the camera.
- Lift the back cover off the phone.

## Step 2



- Hold the phone firmly in one hand and lift the battery up by using the notches to grip the battery.

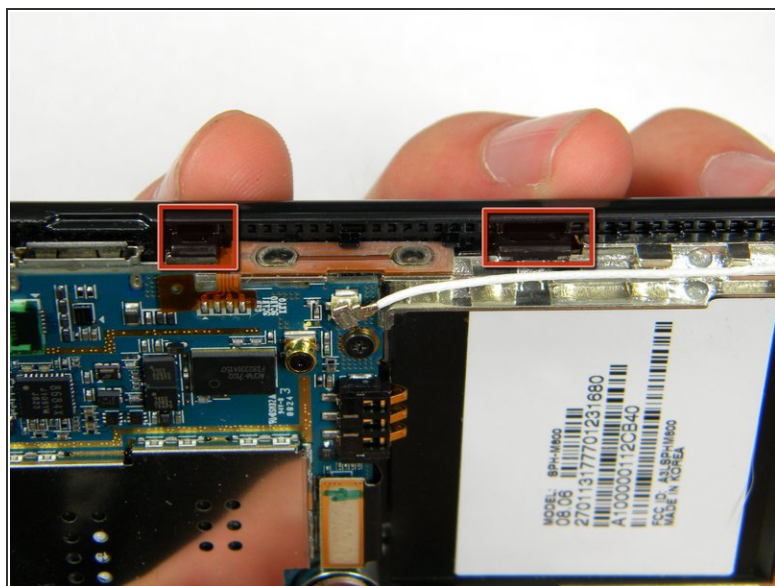


## Step 3



- Remove the four 4.45mm screws at the corners of the phone.

## Step 4



- Use the plastic opener tool to unhook the locks around the edges of the phone.
- ⓘ Do not worry about the inner components of the phone, they are not connected to this case.

## Step 5



- Lift the casing off of the phone.

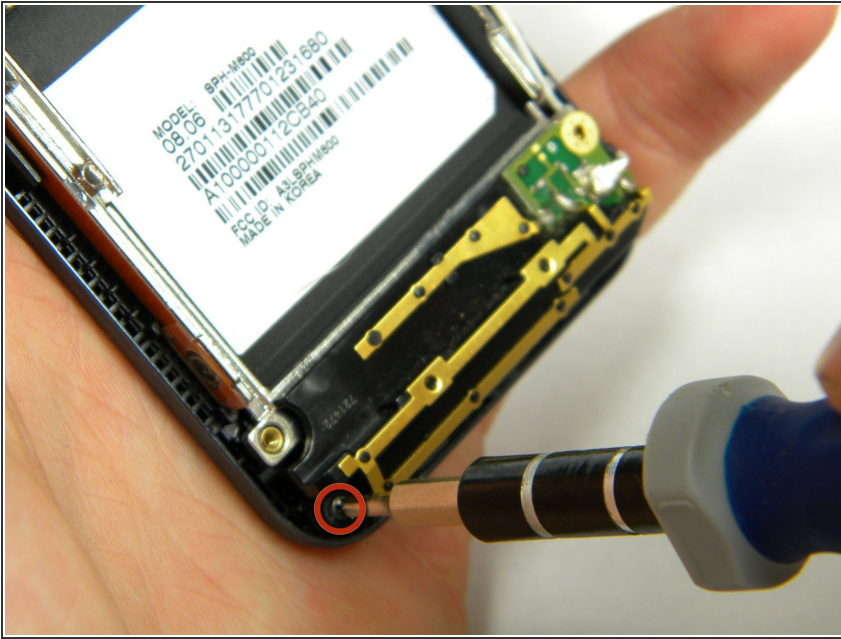
## Step 6



- With the screws removed, locate the antenna.

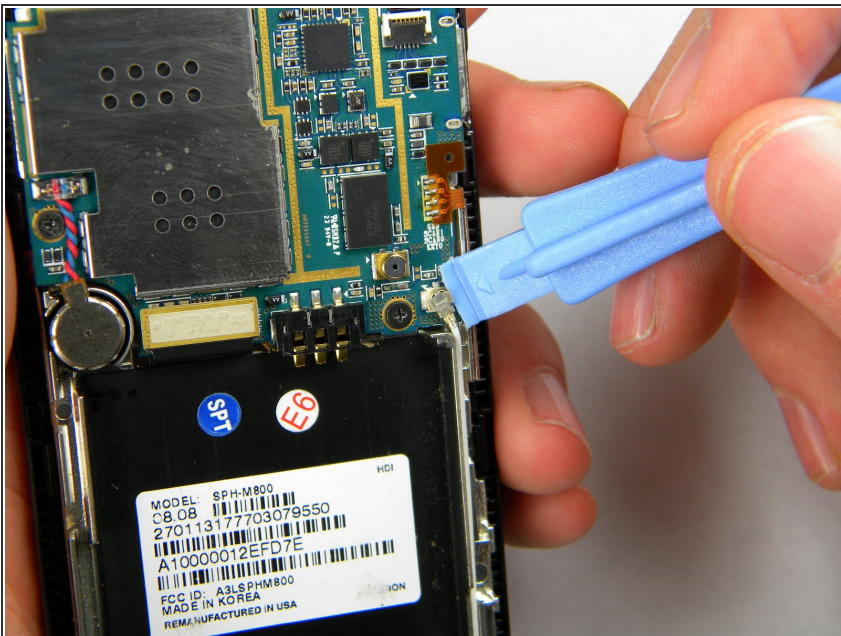


## Step 7



- Using a phillips-head screwdriver, remove the 4.50mm screw holding the antenna in place.

## Step 8



- Using the plastic opener tool, squeeze gently on the antenna cable connector and lift to remove the connector from its position.

## Step 9



- Gently lift up on the antenna and remove it from the back of the device.

## Step 10



- Remove the two 3.50mm screws connecting the motherboard to the case.

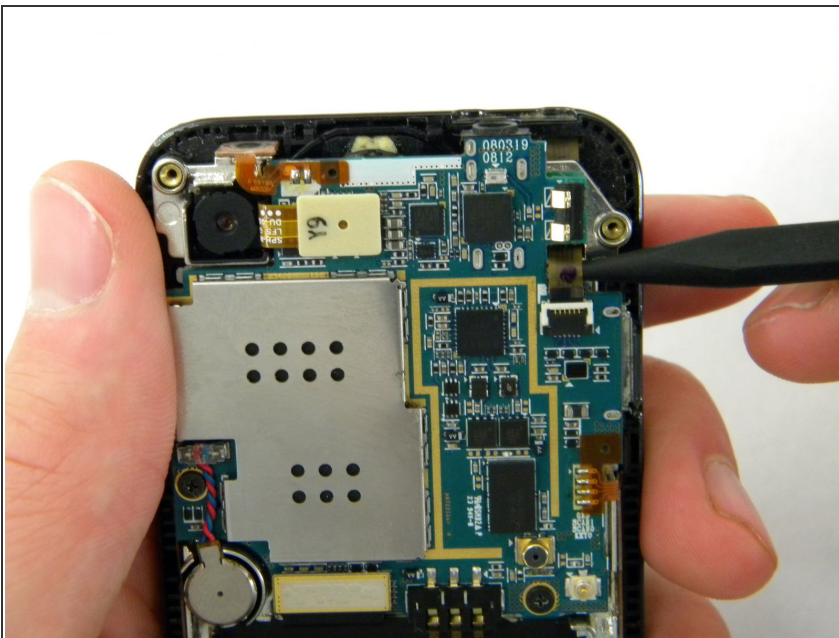


## Step 11



- Use the plastic opener tool to detach the three ribbons on the motherboard.

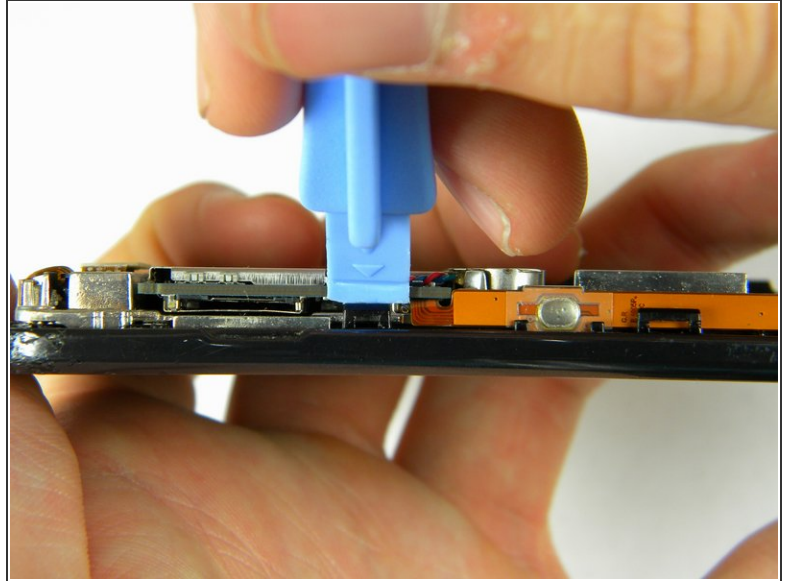
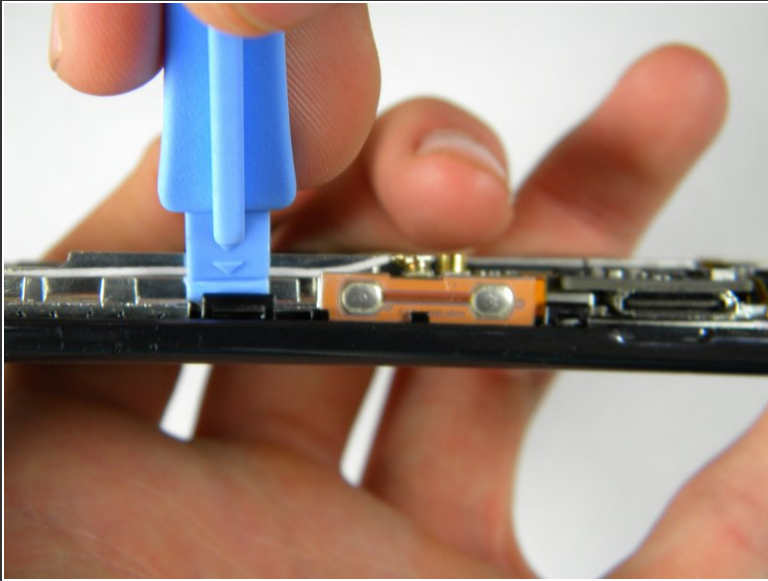
## Step 12



- Lift out the top right ribbon from its slot on the motherboard.

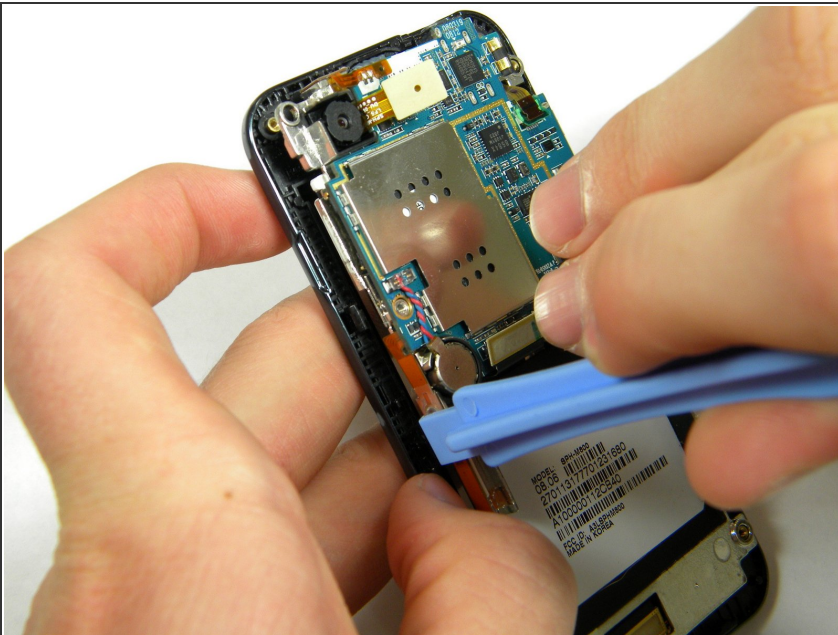


## Step 13



- Use the plastic opener tool to unhinge the the locks on the side of the motherboard connecting it to the front casing.

## Step 14



- Lift the motherboard away from the front casing.

## Step 15



- After removing lifting up on the motherboard, the front casing and center frame should be separated as shown.

## Step 16



- Using tweezers to grasp the pins of the speaker, gently lift the speaker up out of its setting in the front case.

To reassemble your device, follow these instructions in reverse order.