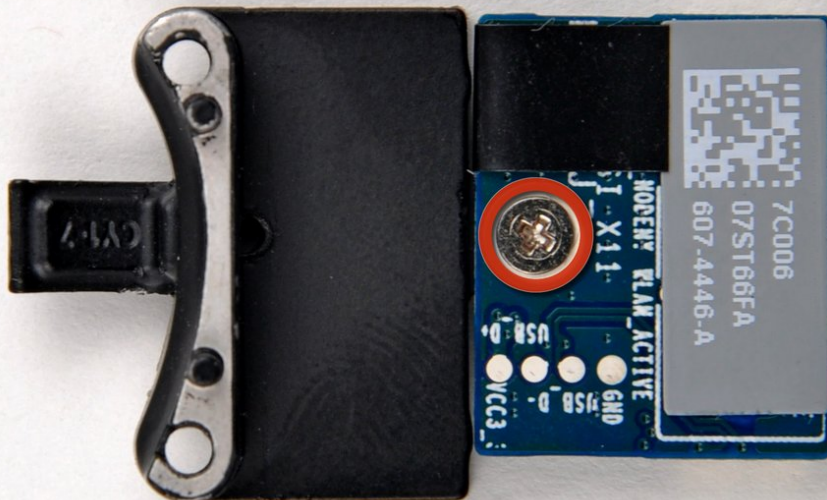




MacBook Pro 15" Unibody Mid 2009 Bluetooth Board Replacement

Written By: Dozuki System



INTRODUCTION

Use this guide to replace a non-functioning Bluetooth board in the Anti-Glare option of the Mid 2009 MacBook Pro.

The Glossy display option does not have this display-mounted bluetooth card, it is found [under the clutch cover](#).



TOOLS:

- [Phillips #00 Screwdriver](#) (1)
- [Spudger](#) (1)



PARTS:

- [MacBook Pro 15" Unibody \(Mid 2009\) Bluetooth Board](#) (1)

Step 1 — MacBook Pro 15" Unibody Mid 2009 Bluetooth Board Replacement



- Remove the following ten screws securing the lower case to the upper case:
 - Seven 3 mm Phillips screws.
 - Three 13.5 mm Phillips screws.

Step 2



- Using both hands, lift the lower case near the vent to pop it off two clips securing it to the upper case.
- Remove the lower case and set it aside.

Step 3



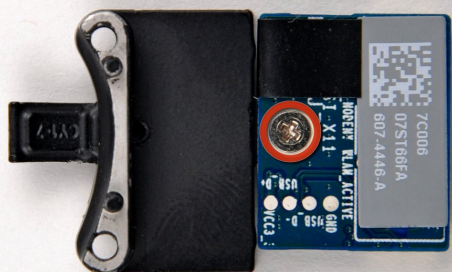
- Disconnect the Bluetooth cable by pulling the male end straight away from its socket.
- ⚠ Pull the connector parallel to the face of the logic board, not straight up.
- Use the flat end of a spudger to pry the Bluetooth antenna cable from its socket on the board.

Step 4



- Remove the two 8 mm Phillips screws securing the Bluetooth/camera cable retainer to the upper case.
- ⓘ One of the screws may remain captive in the Bluetooth/camera cable ground loop. If replacing the display, be sure to transfer this screw to the new unit.
- Lift the Bluetooth board/cable retainer assembly out of the upper case.

Step 5



- Remove the single Phillips screw securing the Bluetooth board to the retainer.
- Lift the Bluetooth board off the retainer.

To reassemble your device, follow these instructions in reverse order.