



INTRODUCTION

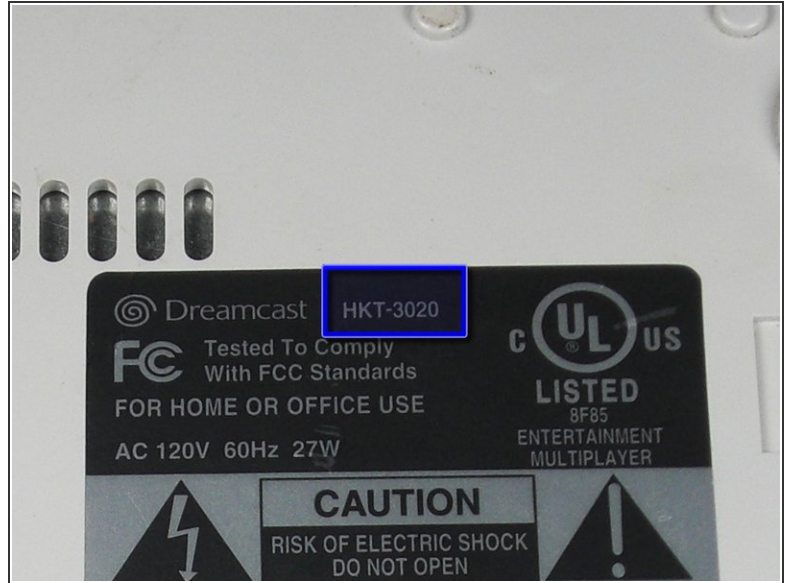
A guide to remove the Logic Board from the Sega Dreamcast.



TOOLS:

- [Anti-Static Wrist Strap](#) (1)
 - [Phillips #00 Screwdriver](#) (1)
 - [Phillips #2 Screwdriver](#) (1)
-

Step 1 — Sega Dreamcast Logic Board Removal



⚠ Verify that the console is disconnected from the AC outlet before you begin.

- **Flip the console** over on its back.
- **Take note of your model number**, in case replacement parts are needed.

Step 2



- **Remove the expansion bay** by applying pressure to the small clip on the expansion bay while prying it away from the console.

Step 3



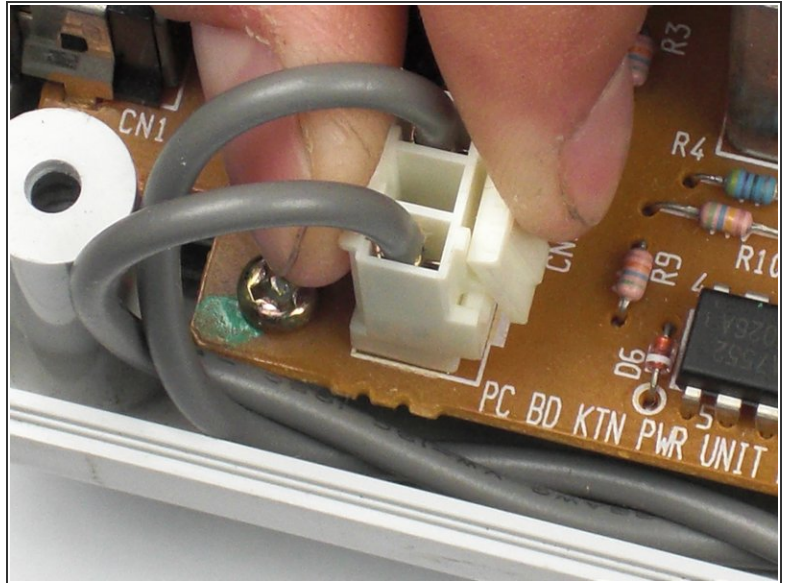
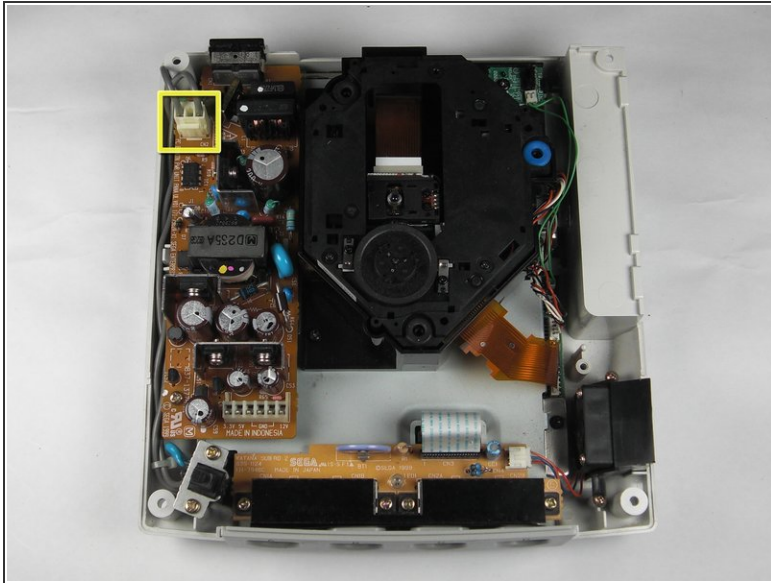
- **Locate and remove all four black 12mm Phillips #02 screws** from the underside of the console.
- ⓘ The fourth screw is hidden under the expansion bay if it has not already been removed.

Step 4



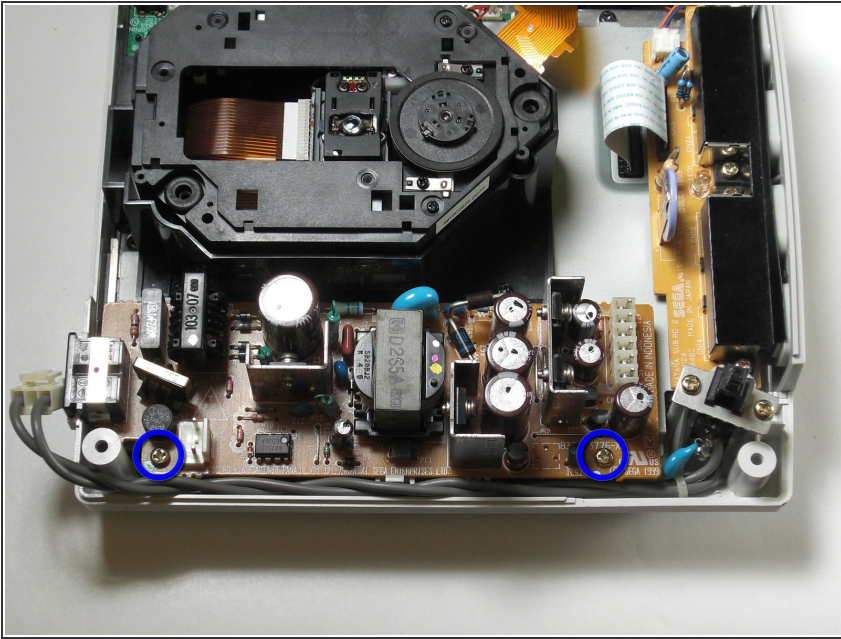
- ⚠ Be careful that the internal components do not topple out.
- **Flip the console topside up.**
- **Remove the top cover** of the chassis by gently lifting the upper portion of the console.

Step 5



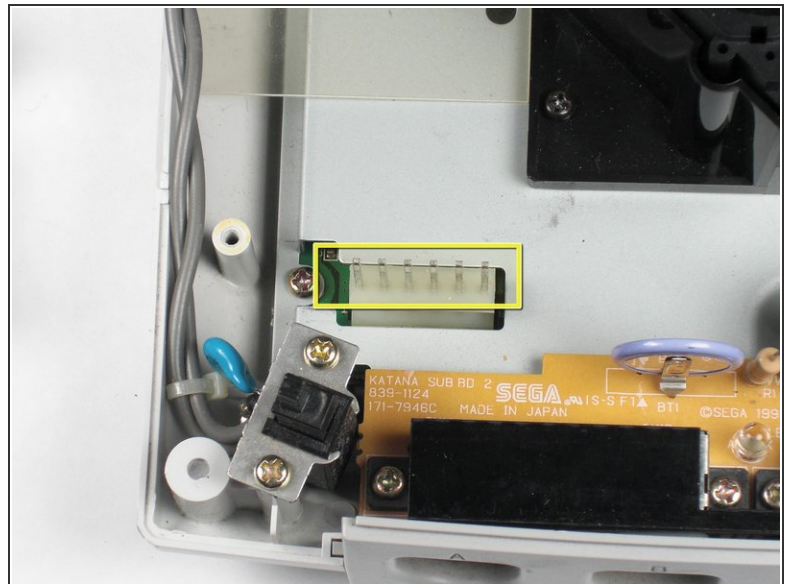
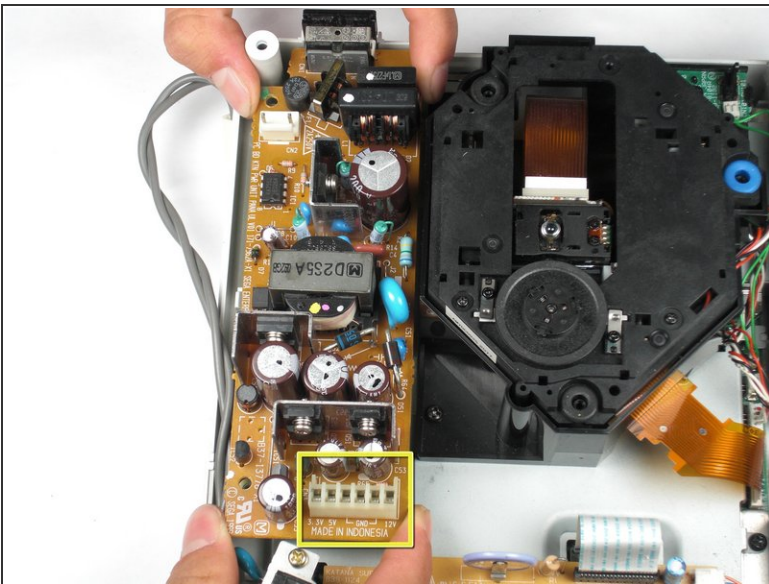
- ⚠ Verify that the console is disconnected from the AC outlet before you begin. If you have just powered off the system, give the capacitors a few minutes to discharge before you begin working.**
- **Remove the white female pin header** by clamping the clip and pulling it up gently from the power board.

Step 6



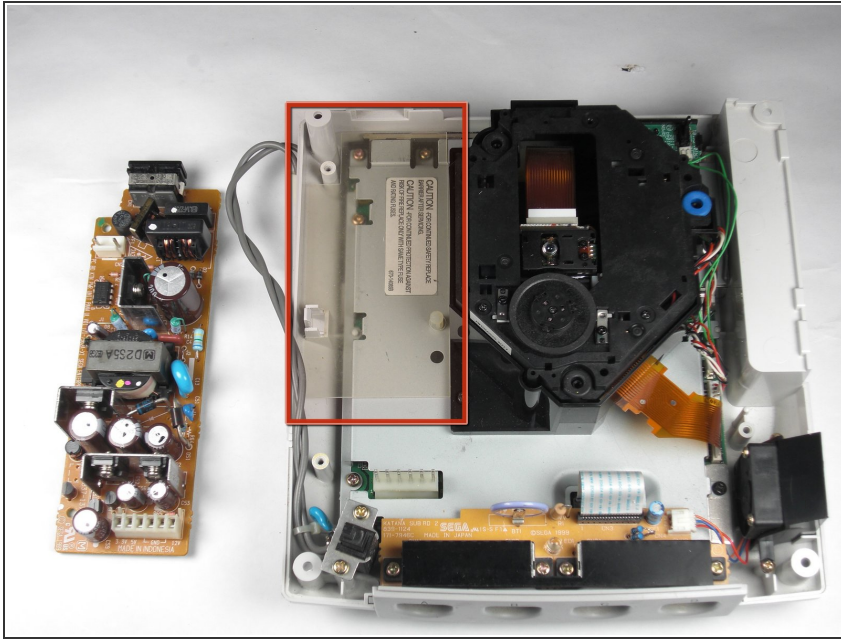
- Remove the two 10mm Philips #02 screws that are fastened to the power block.

Step 7



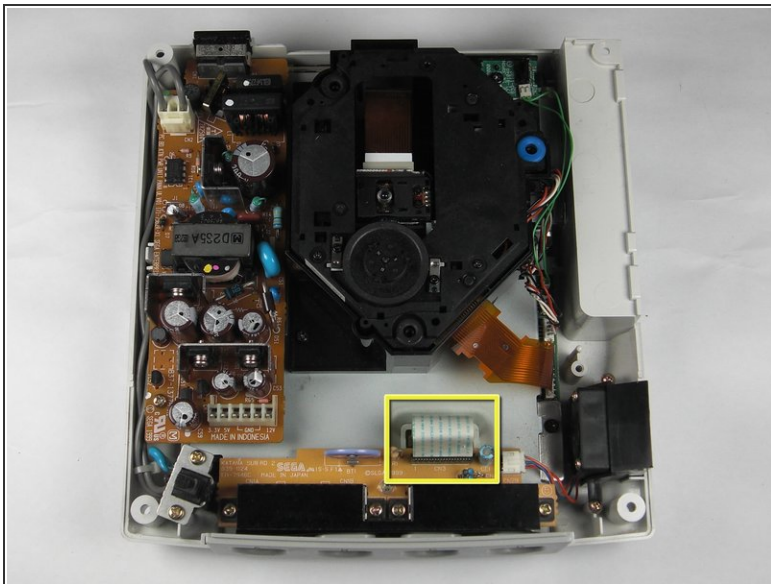
- Do not bend the male pin header between the mounted head when you remove the power supply from the chassis.
- Remove the power board by using both hands to gently lift the power board away from the console.

Step 8



- **Remove the clear plastic film** that is tucked between the power supply and the chassis.

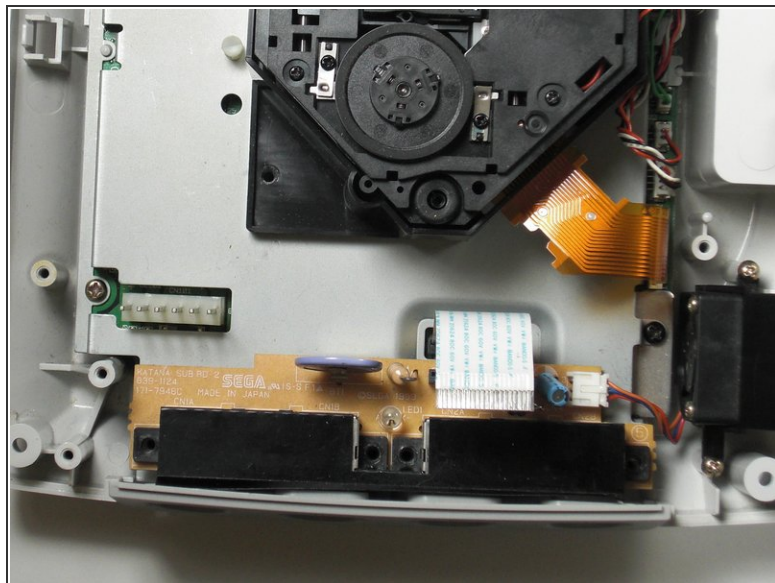
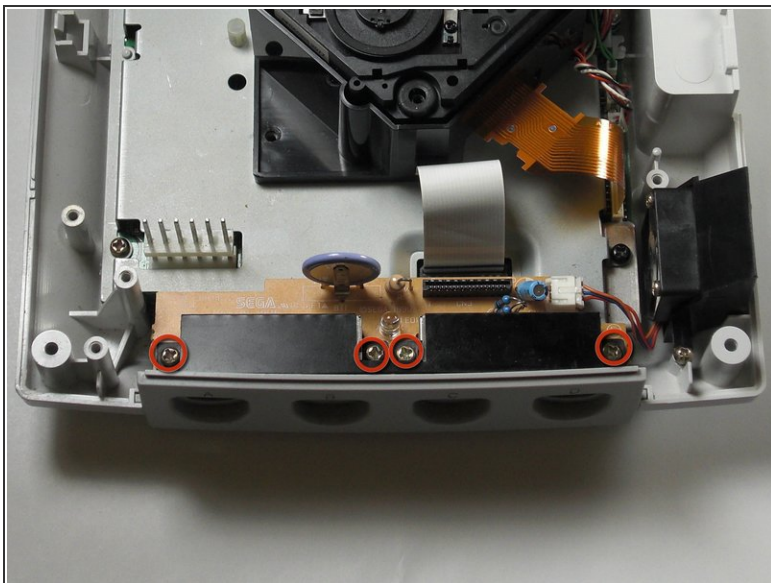
Step 9



⚠ Be gentle with the white controller cable as it can be a bit fragile.

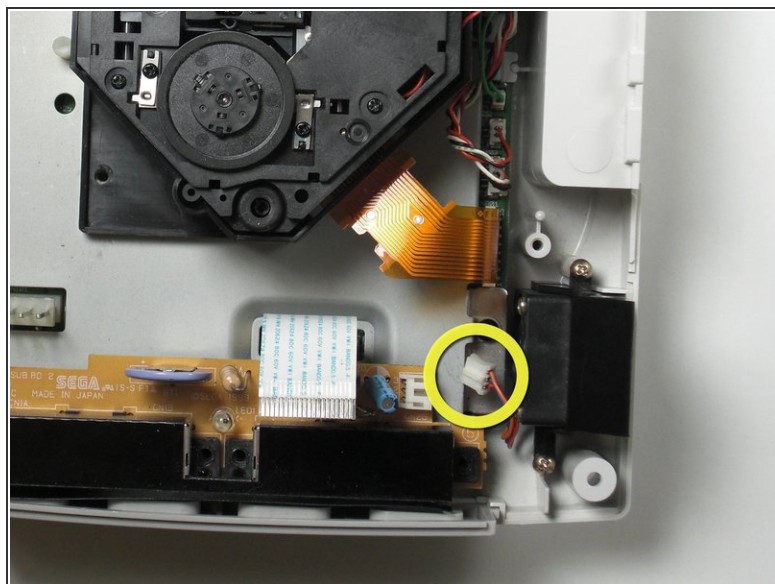
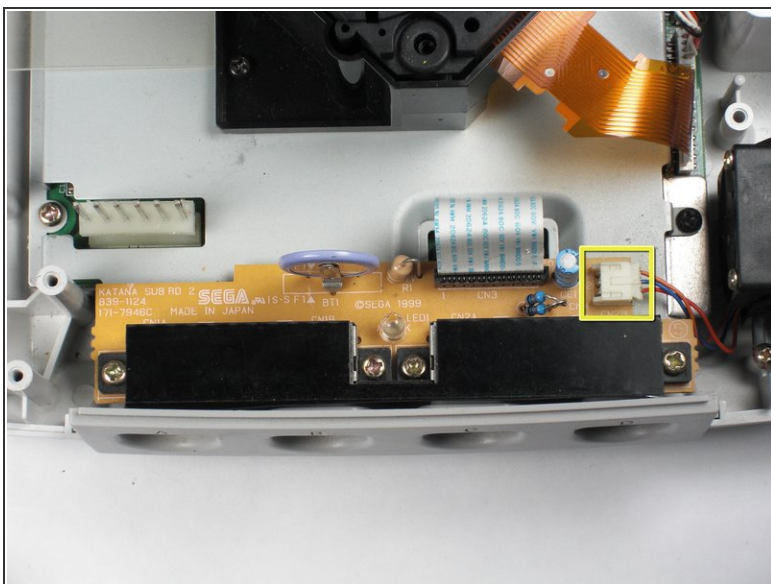
- **Disconnect the white controller cable** by gently pulling the the cable while wiggling it back and forth until it detaches from the controller board.

Step 10



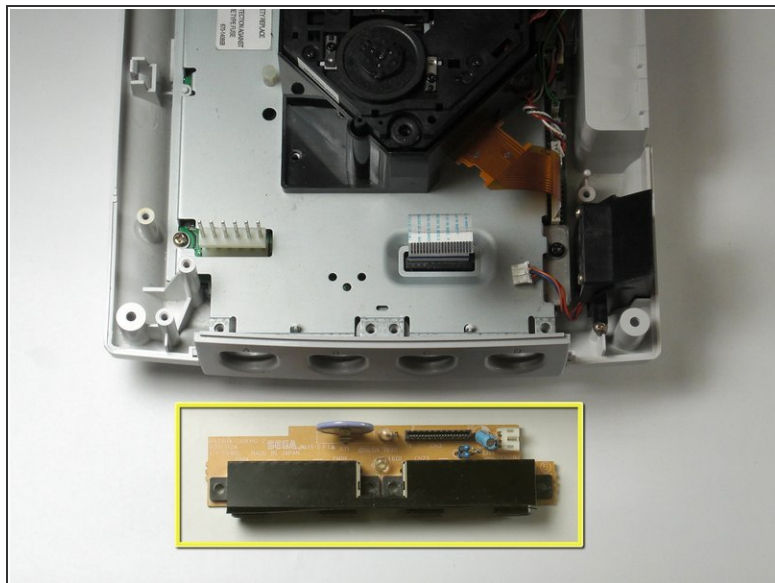
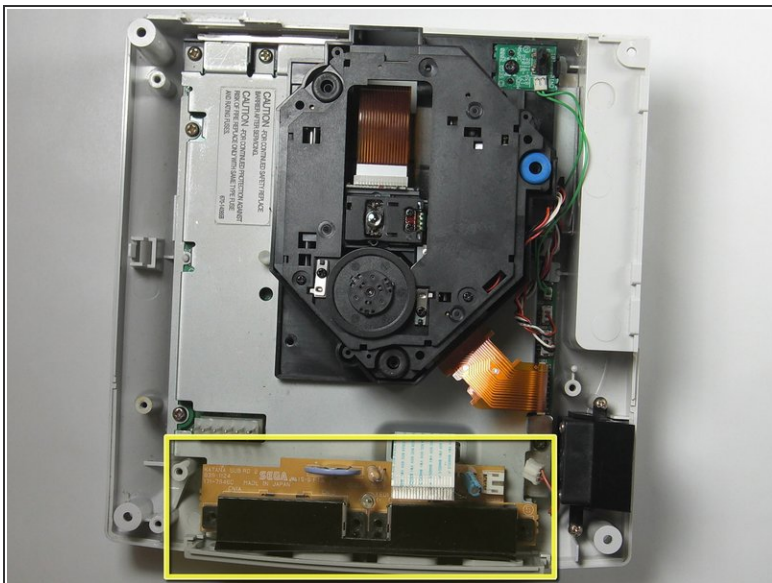
- **Remove the four 14mm Philips #02 located on the controller board.**

Step 11



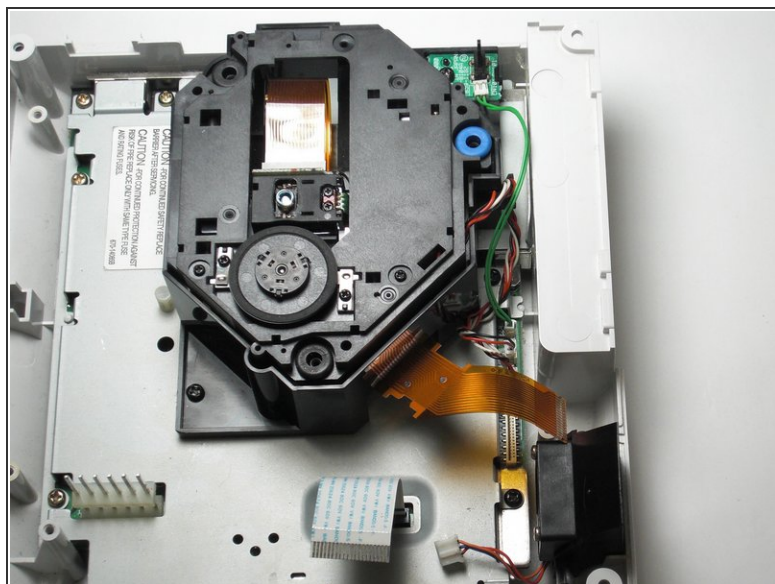
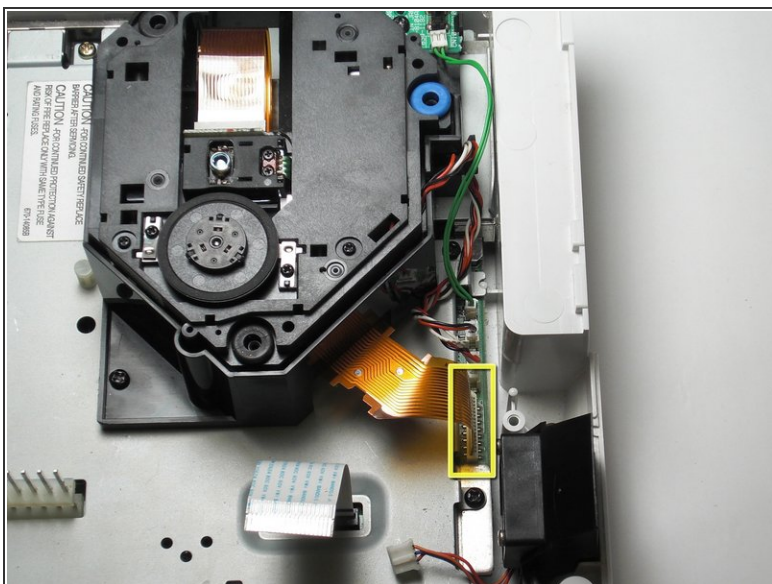
- **Disconnect the white fan header from the controller port**

Step 12



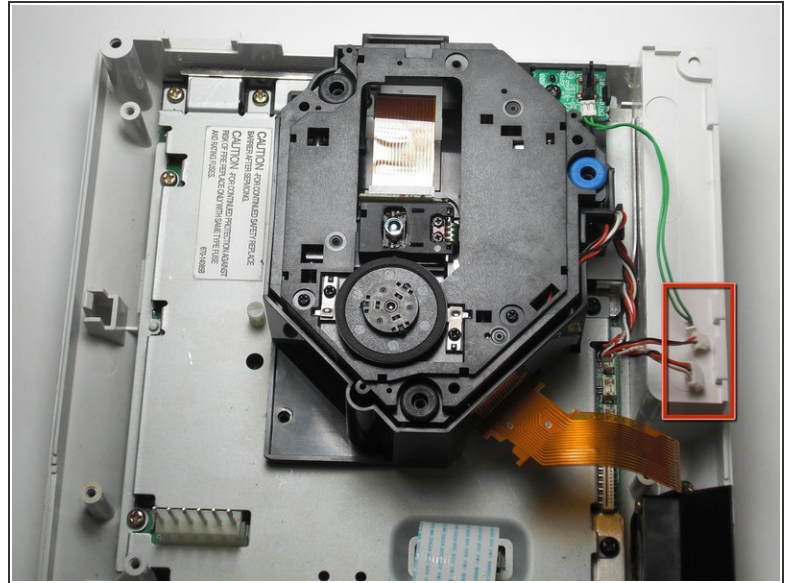
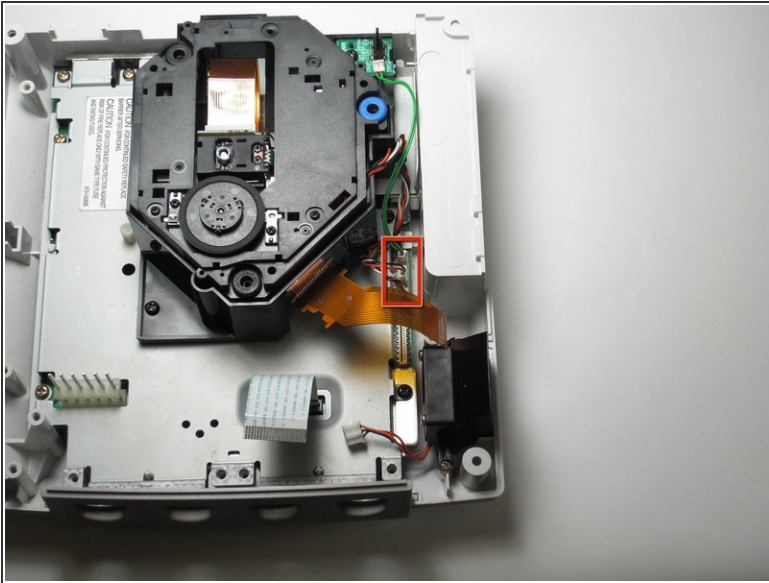
- **Remove the controller board** by lifting it up from the controller port.

Step 13



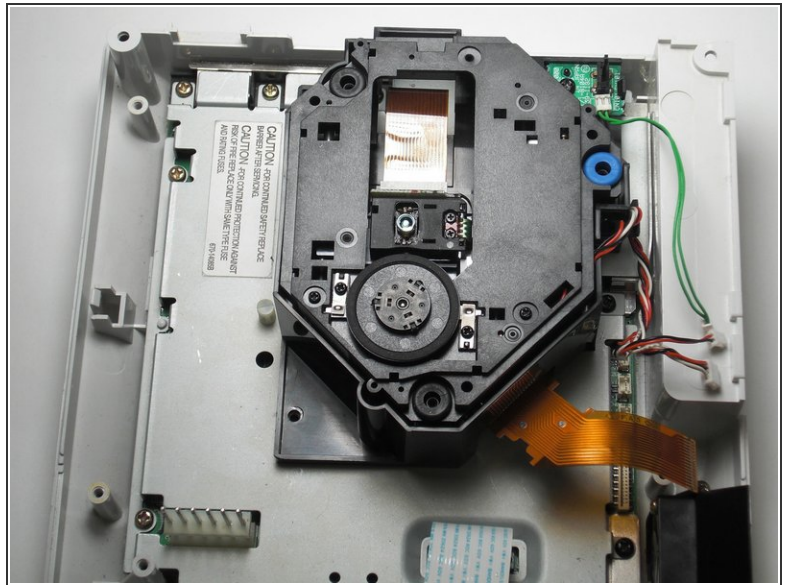
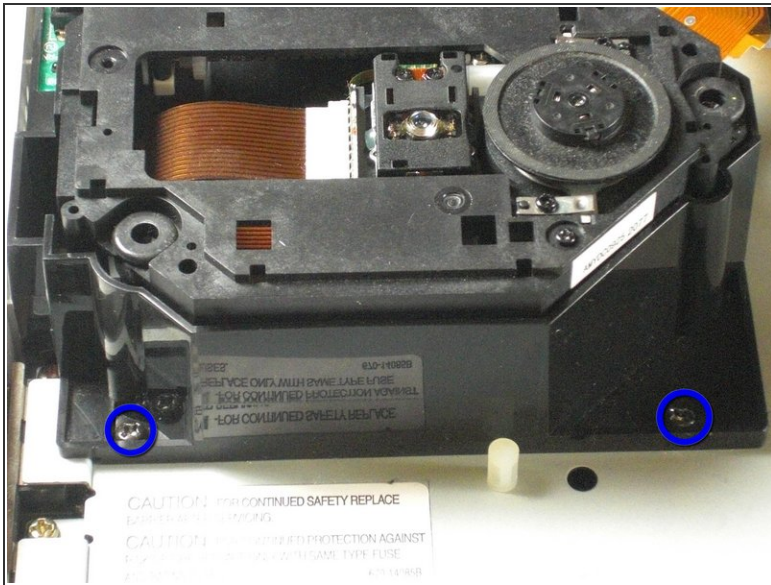
- **Detach the orange cable** by giving it a gentle pull while wiggling the cable back and forth until it loosens from the logic board.

Step 14



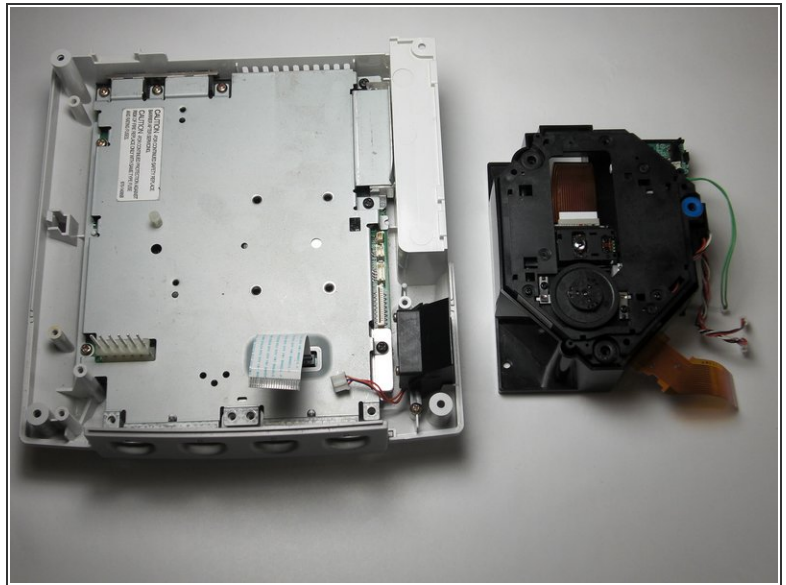
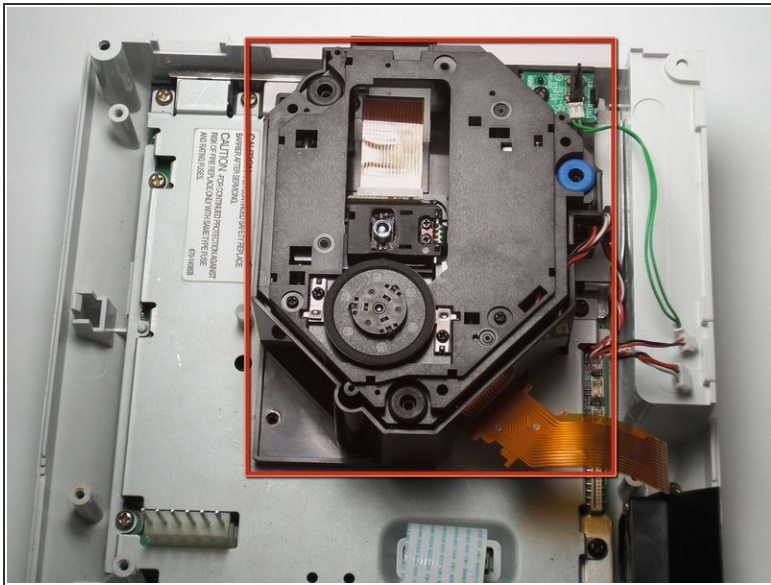
- **Detach the cables** by gently pulling the three GD-ROM cables to remove them from the logic board.

Step 15



- **Remove the two black 12mm Philips #02 screws** located on the left side of the GD-ROM bracket.
- ⓘ The console is rotated 90 degrees counter-clockwise in the first photo. The second photo depicts the normal position.

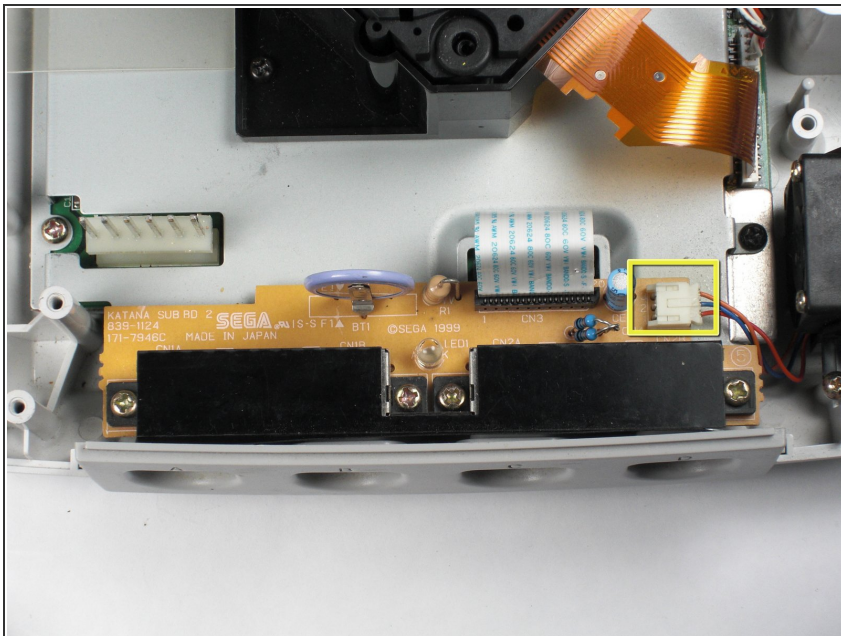
Step 16



⚠ When lifting the GD-ROM, be careful that the top half of the casing does not detached from its base.

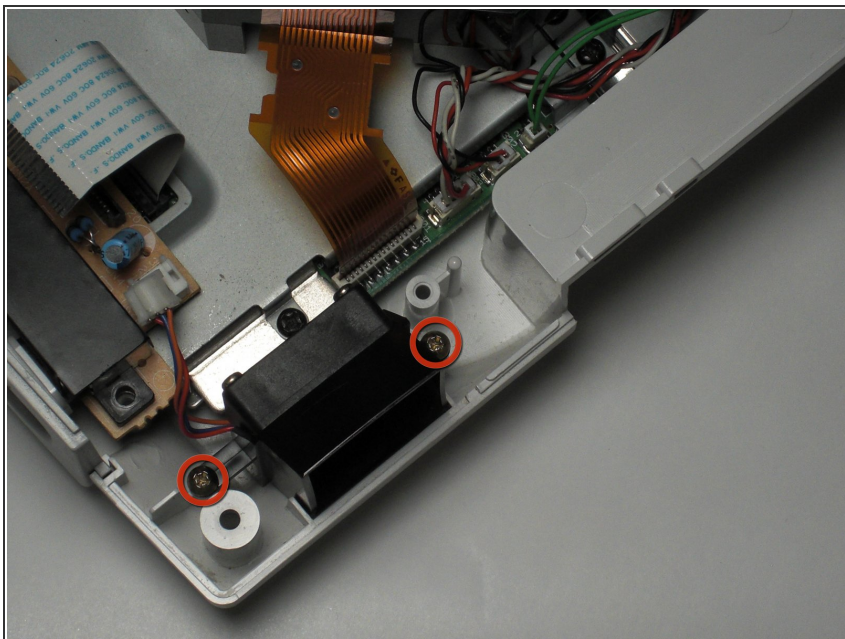
- **Remove the GD-ROM** by gently lifting it from its base.

Step 17



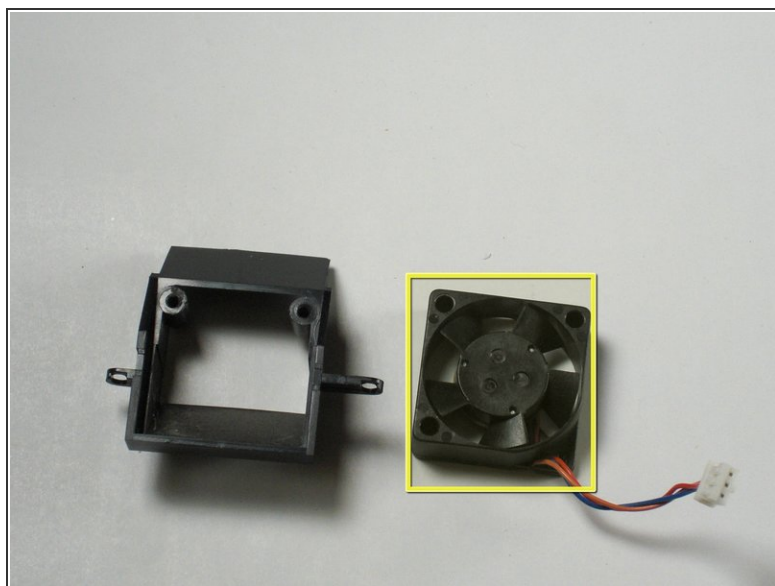
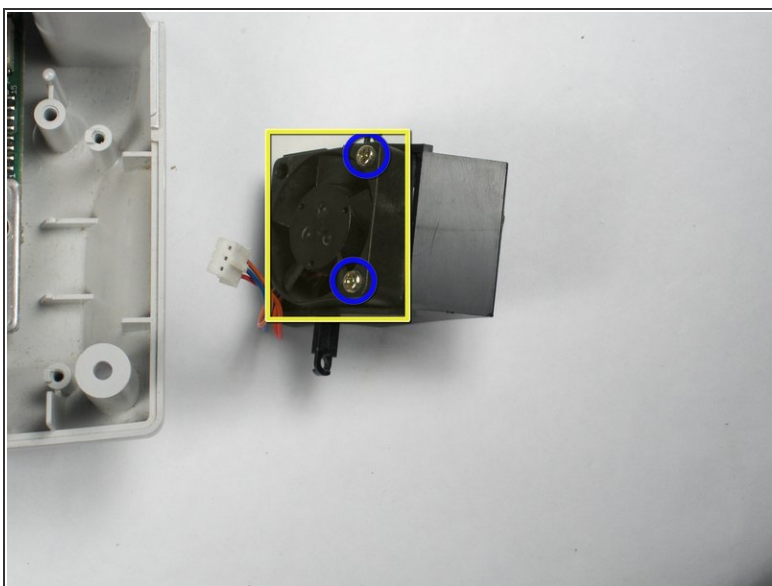
- **Remove the white fan header** by gently pulling it away from from the controller port.
- ⓘ The white fan header may already be detached if you have completed the Controller Port Disassembly Guide.

Step 18



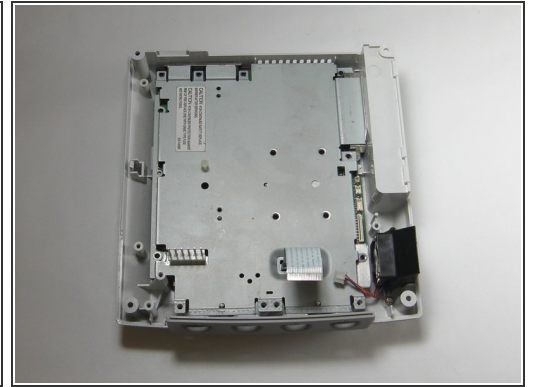
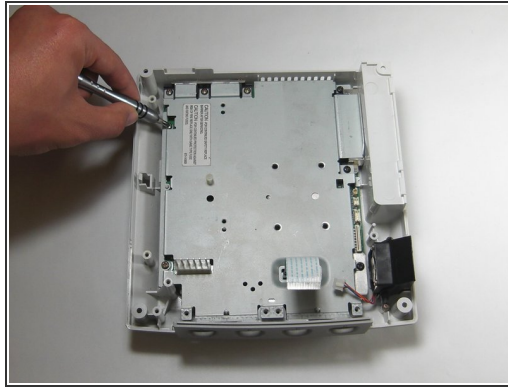
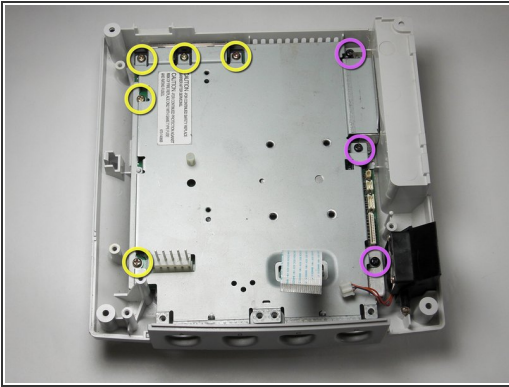
- **Remove the two 8.5mm Philips #00 screws** from the fan bracket.

Step 19



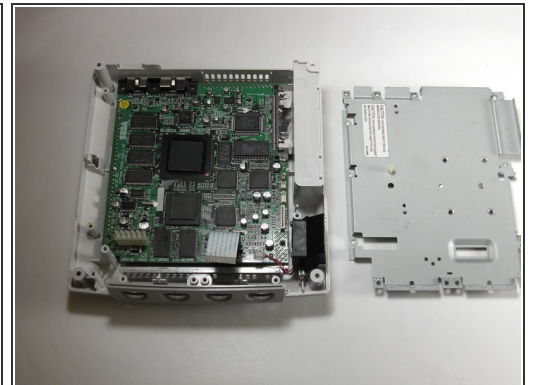
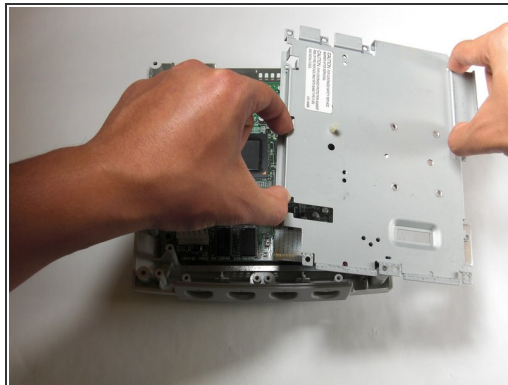
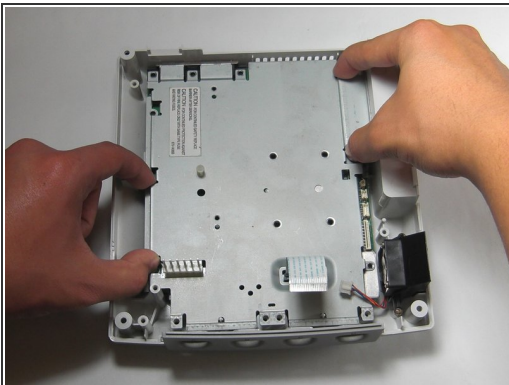
- **Remove the two 17.5mm Philips #00 screws** from the fan bracket.
- **Remove the fan** from the bracket.

Step 20



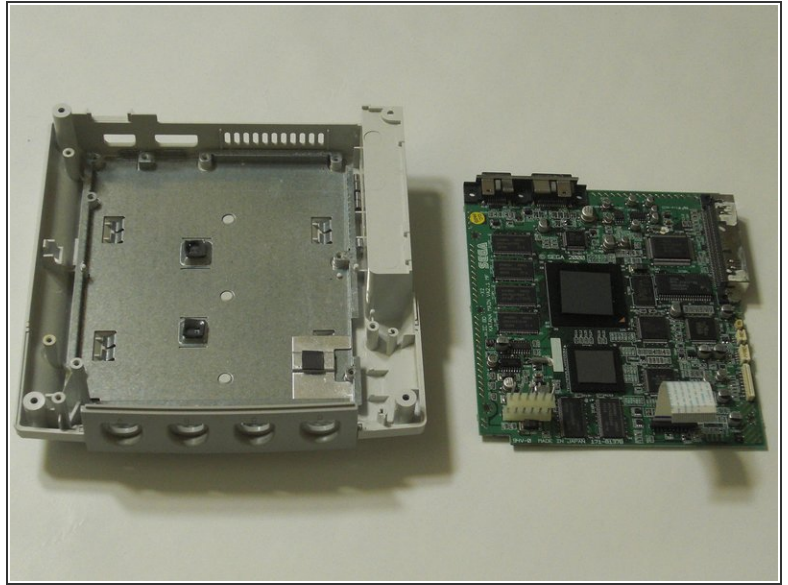
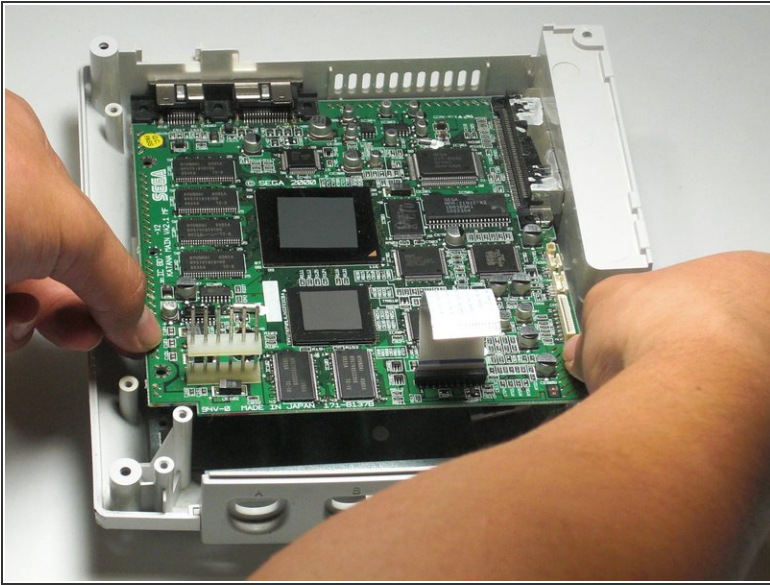
- Remove the five 10mm Philips #02 screws from left side of the logic board cover.
- Remove the three black 12mm Philips #02 screws from the right side of the logic board cover.


Step 21



- Lift the metal cover from the console.

Step 22



 Before handling the logic board, you may want to use a grounding strap to protect the device from static charge. If you do not have a grounding strip, you may ground yourself by touching a large metallic object.

- **Remove the logic board** and set the logic board on an anti-static surface.

To reassemble your device, follow these instructions in reverse order.