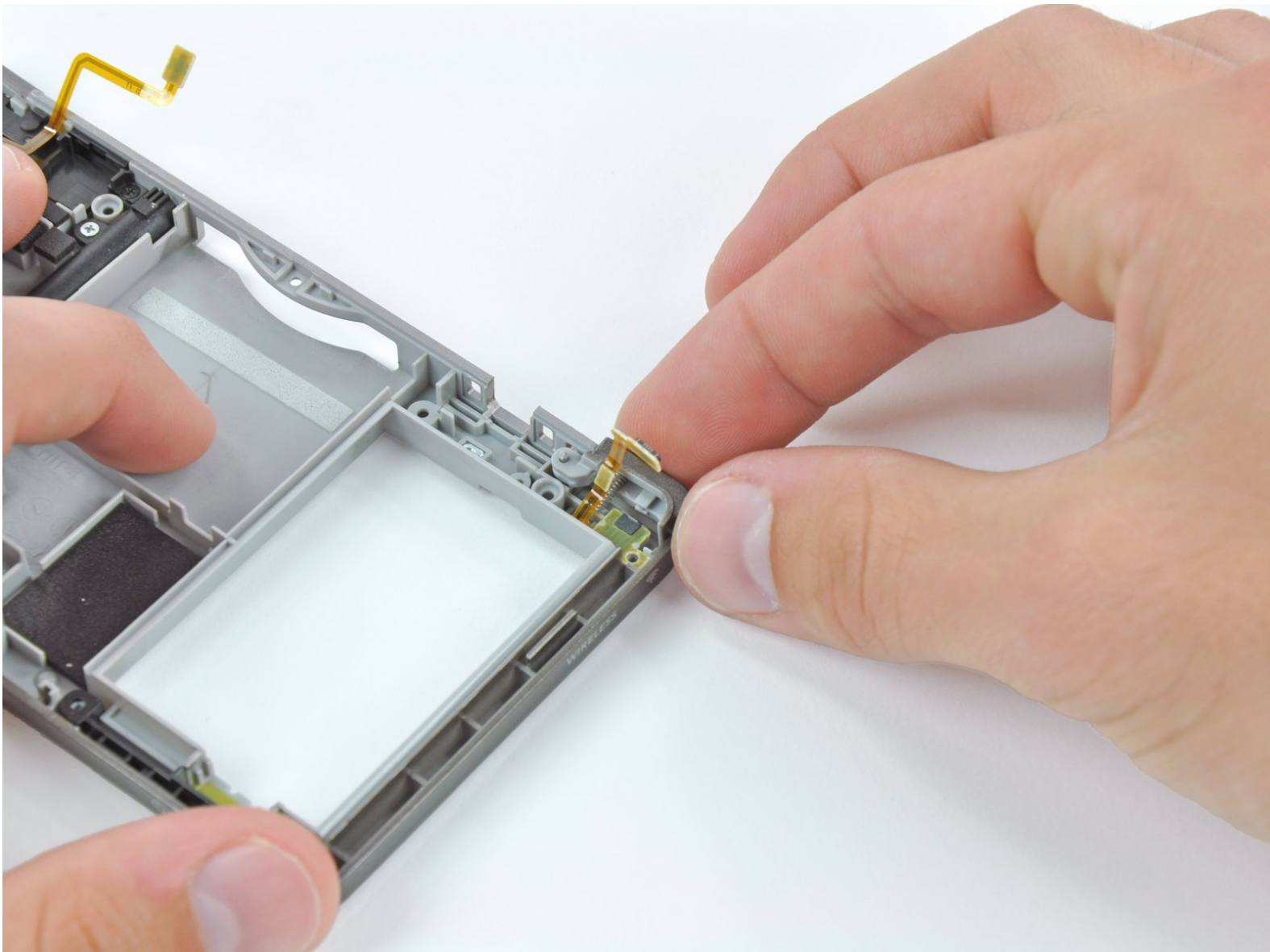




Nintendo 3DS Right Shoulder Button Replacement

Written By: Dozuki System



INTRODUCTION

Get back your R button functionality with a new right shoulder button.



TOOLS:

- [Plastic Opening Tools](#) (1)
 - [Phillips #00 Screwdriver](#) (1)
-

Step 1 — Nintendo 3DS Right Shoulder Button Replacement



- Unscrew the four Phillips #00 screws along the top of the back cover.
- ⓘ The screws are held in place by locking washers, and will not come out of the back cover.
- ⚠ The comments section is full of unlucky souls who will tell you that the screws here through step 4 will strip incredibly easily. Press down fairly hard, and go slow.

Step 2



- i Hold the device in one hand and turn it over.
- Grab the top edge of the back cover with your opposite hand so that the cover does not fall back into place.
- i Flip the 3DS over again so that the back cover is facing up.
- Pull the back cover up and away from the rest of the device to remove it.

Step 3



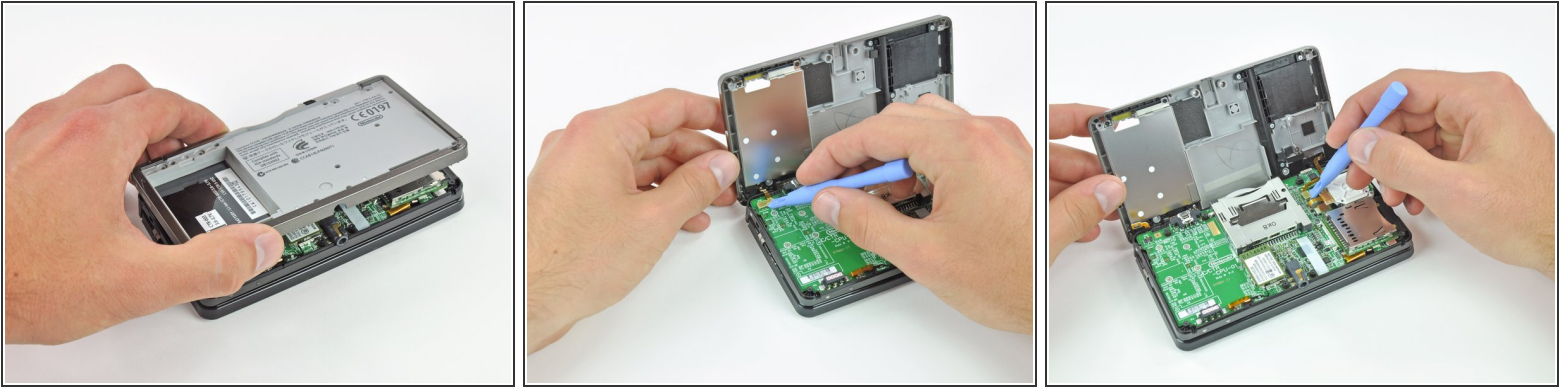
- Insert a plastic opening tool into the notch in the lower case above the battery.
- Pry the battery up with the plastic opening tool.
- Grab the top edge of the battery and lift it out of the lower case.

Step 4




- Remove the nine 6.3 mm black Phillips screws from the lower case.
- Remove the 2.4 mm silver Phillips screw above the game cartridge slot.

Step 5

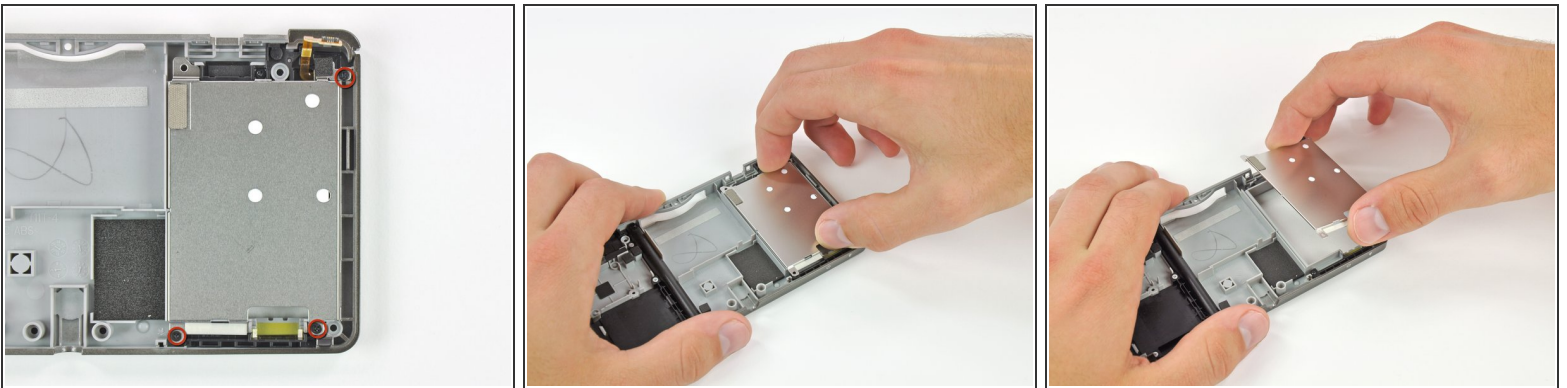


- Lift the bottom edge of the lower case off the rest of the 3DS.

 There are still two ribbon cables connecting the mother board to the case, so be sure not to pull the lower case all the way off.

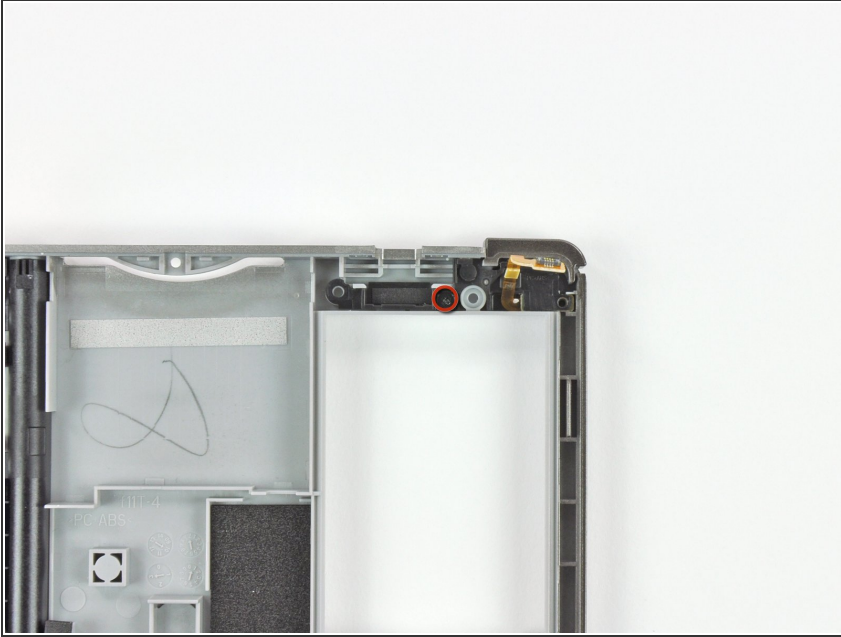
- Use a plastic opening tool to pry the shoulder button ribbon cables off their sockets on the motherboard.
- Remove the lower case from the device.

Step 6



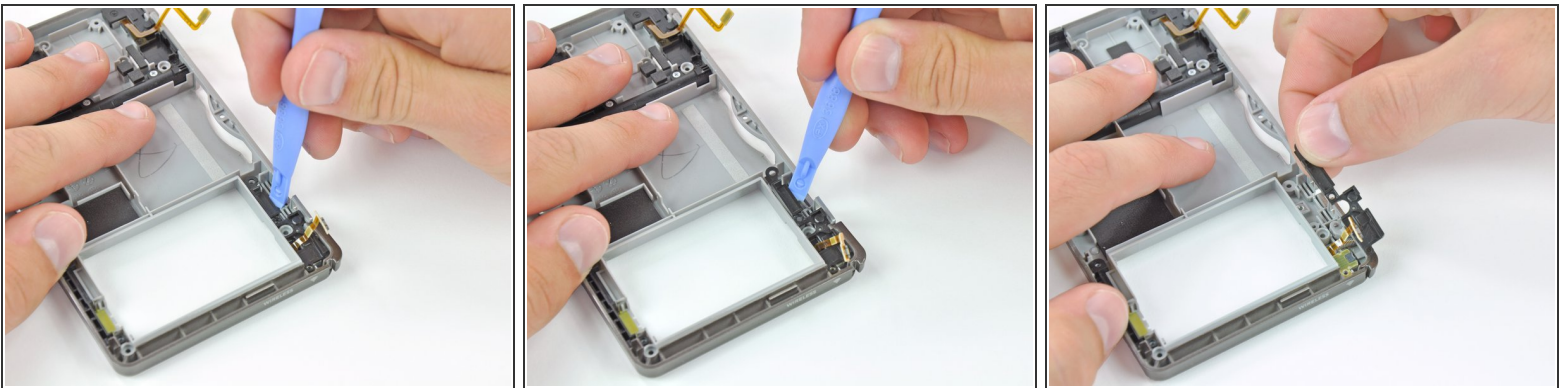
- Remove the three 3.6 mm Phillips screws securing the metal battery shield to the lower case.
- Lift the battery shield up and out of the lower case.

Step 7



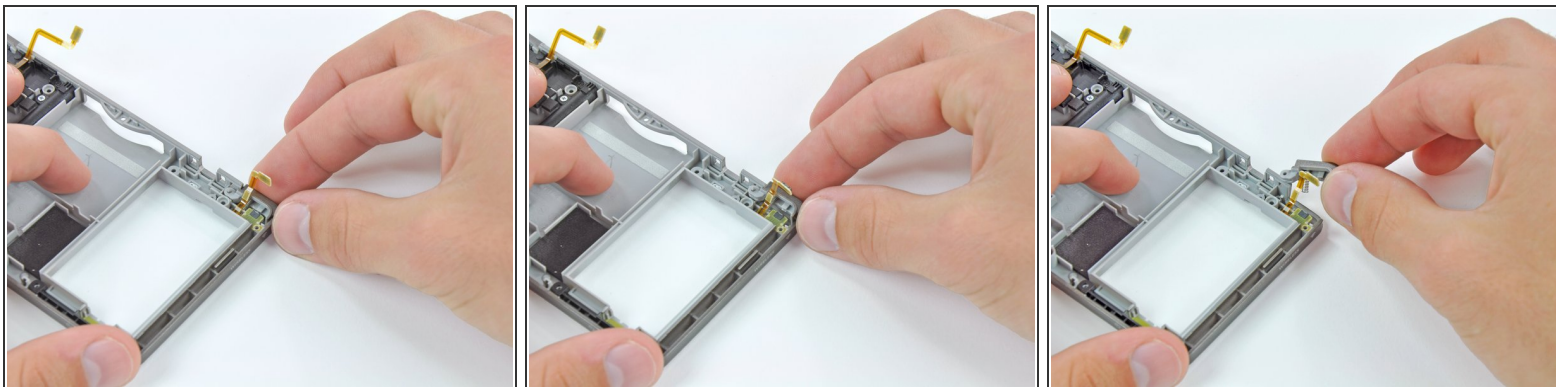
- Remove the 3.6 mm Phillips screw from the right shoulder button cover.

Step 8



- Insert a plastic opening tool under the left side of the right shoulder button cover.
- Pry the black plastic cover up from the lower case.
- Grab the cover and lift it off of the lower case.
- ☑ If the shoulder button contact and ribbon cable come off with the cover, be sure to reinstall them in the correct orientation.

Step 9



- Lift the right shoulder button out of the lower case.

i The shoulder button is held in place by a metal pin, and houses a small spring. Take care not to lose track of either of these pieces when removing the shoulder button.

To reassemble your device, follow these instructions in reverse order.