



Nintendo 3DS IR Board Replacement

Written By: Dozuki System



INTRODUCTION

Having trouble with your 3DS' IR port? A new IR board could help.

TOOLS:

- [Plastic Opening Tools](#) (1)
 - [Spudger](#) (1)
 - [Phillips #00 Screwdriver](#) (1)
-

Step 1 — Nintendo 3DS IR Board Replacement



- Unscrew the four Phillips #00 screws along the top of the back cover.
- ❗ The screws are held in place by locking washers, and will not come out of the back cover.
- ⚠ The comments section is full of unlucky souls who will tell you that the screws here through step 4 will strip incredibly easily. Press down fairly hard, and go slow.

Step 2



- i Hold the device in one hand and turn it over.
- Grab the top edge of the back cover with your opposite hand so that the cover does not fall back into place.
- i Flip the 3DS over again so that the back cover is facing up.
- Pull the back cover up and away from the rest of the device to remove it.

Step 3



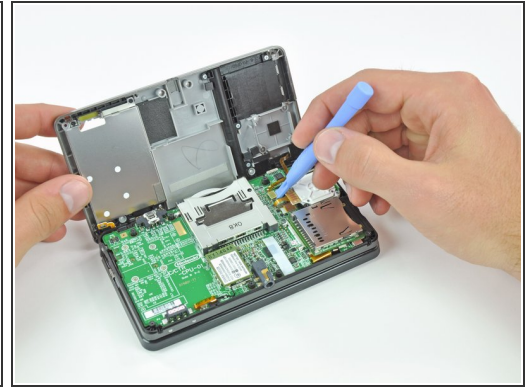
- Insert a plastic opening tool into the notch in the lower case above the battery.
- Pry the battery up with the plastic opening tool.
- Grab the top edge of the battery and lift it out of the lower case.

Step 4



- Remove the nine 6.3 mm black Phillips screws from the lower case.
- Remove the 2.4 mm silver Phillips screw above the game cartridge slot.

Step 5

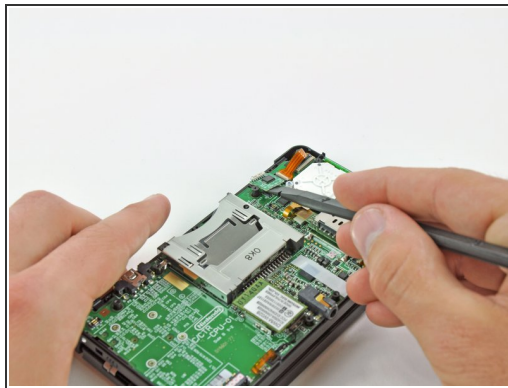


- Lift the bottom edge of the lower case off the rest of the 3DS.

⚠ There are still two ribbon cables connecting the mother board to the case, so be sure not to pull the lower case all the way off.

- Use a plastic opening tool to pry the shoulder button ribbon cables off their sockets on the motherboard.
- Remove the lower case from the device.

Step 6



- Use the flat end of a spudger to lightly pry the IR board off the motherboard.
- Grab the edges of the IR board with two fingers and lift it from the motherboard.

To reassemble your device, follow these instructions in reverse order.

