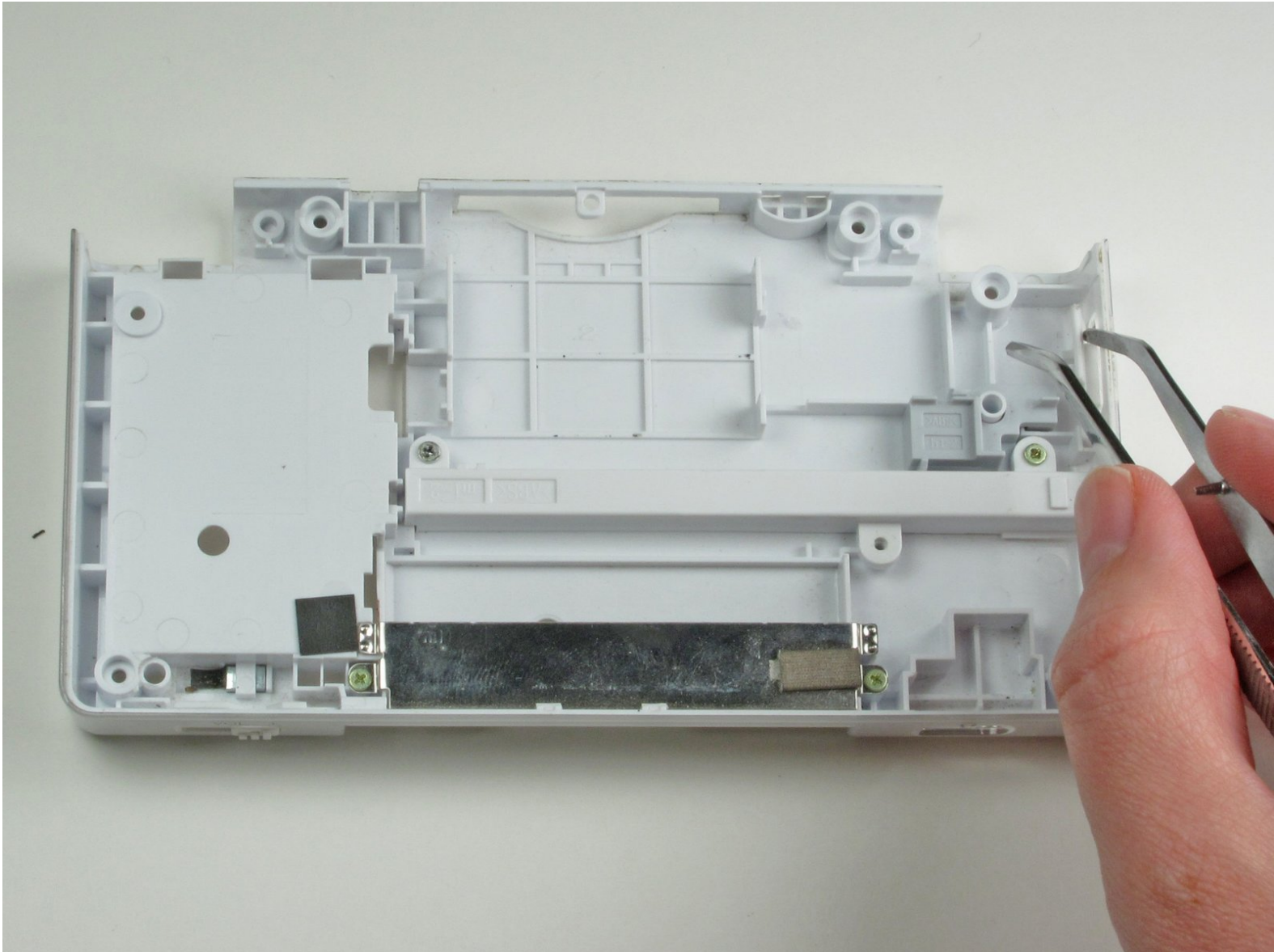




# Nintendo DS Lite Power Switch Replacement

Written By: Dozuki System



---

# INTRODUCTION

Replace the power switch on the Nintendo DS Lite.

---



## TOOLS:

- [Phillips #00 Screwdriver](#) (1)
  - [Spudger](#) (1)
  - [Tri-wing Screwdriver](#) (1)
  - [Tweezers](#) (1)
-

## Step 1 — Nintendo DS Lite Power Switch Replacement



- Unscrew the Phillips screw securing the battery cover to the lower case.
- ⓘ The screw remains captive to the battery cover.
- Pry the battery cover upward with a spudger or fingernail, and lift out of the lower case.

## Step 2



- Wedge the edge of a spudger in between the side of the battery and the lower case housing and pry upward to dislodge the battery.
- Remove the battery from the DS Lite.

## Step 3



- Use the tip of a spudger to pry both rubber feet off the DS Lite.

## Step 4



- Remove the following screws securing the lower case to the body of the DS Lite:
  - Two 4.3 mm gold Phillips screws
  - One 3.9 mm black Tri-Wing screw
  - One 3.3 mm silver Phillips screw
  - Three 5.5 mm silver Tri-Wing screws



## Step 5



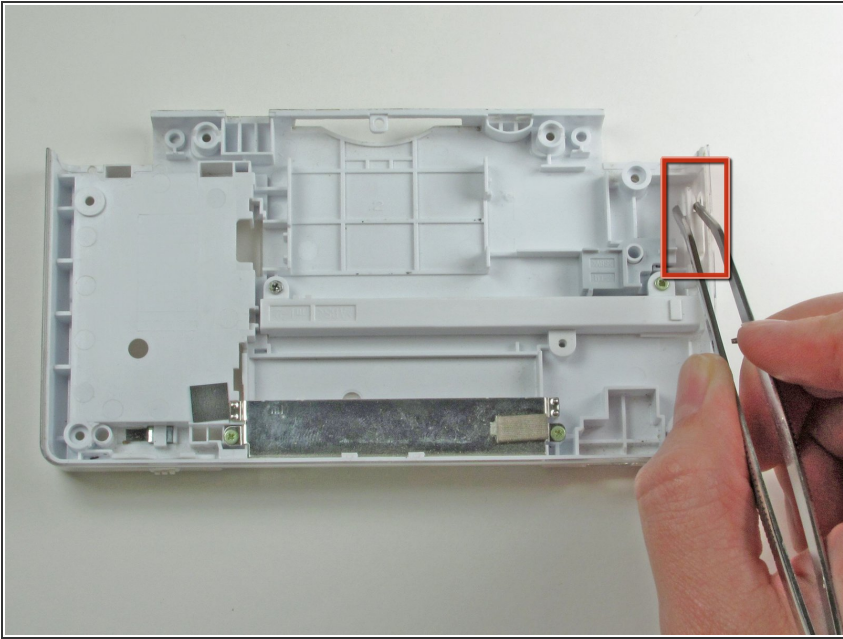
- Insert the edge of a spudger in between the lower and upper case near the top right corner of the DS Lite.
- Carefully run the spudger along the right edge of the DS Lite, creating an opening in the process.
- Continue running the spudger along the backside of the DS Lite until the majority of the lower case has been separated from the upper case.

## Step 6



- Lift the lower case away from the rest of the DS Lite.

## Step 7



- Use a pair of tweezers to carefully remove the power switch.

To reassemble your device, follow these instructions in reverse order.