



Nintendo DSi Touchscreen Replacement

Written By: Dozuki System



INTRODUCTION

This guide will walk you through replacing your DSi's touchscreen.



TOOLS:

- [Phillips #00 Screwdriver](#) (1)
- [Plastic Opening Tools](#) (1)
- [Spudger](#) (1)
- [Tweezers](#) (1)



PARTS:

- [Nintendo DSi Touchscreen](#) (1)

Step 1 — Nintendo DSi Touchscreen Replacement



- Unscrew the two Phillips screws securing the battery cover to the lower case.
- ⓘ The screws remain captive to the battery cover.
- Grasp the battery cover and lift out of the lower case.

Step 2



- Wedge the edge of a spudger in between the top of the battery and its lower case housing and pry upwards to dislodge the battery.
- Grasp the battery and remove it from the DSi.

Step 3



- Two screws are hidden underneath two rubber feet highlighted in red.
- Use the tip of a spudger to pry the rubber feet out of the lower case.

Step 4



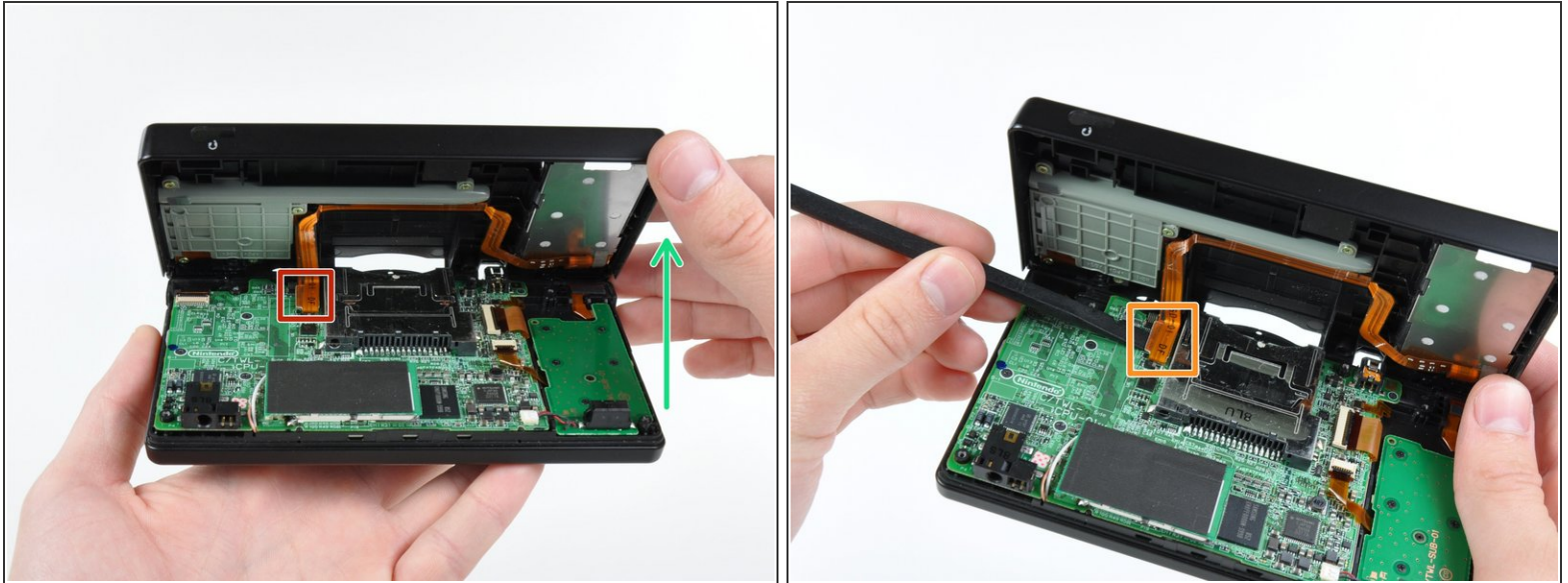
- Remove the following screws securing the lower case to the body of the DSi:
 - Six 5.2 mm Phillips screws.
 - One 2.7 mm Phillips screw.

Step 5



- Insert the spudger in between the lower casing and lower panel near the top right corner of the DSi.
- Carefully run the spudger along the edge of the outer casing, creating an opening between the body and the casing.
- Continue running the spudger around the body of the DSi until the majority of the lower case has been separated.

Step 6



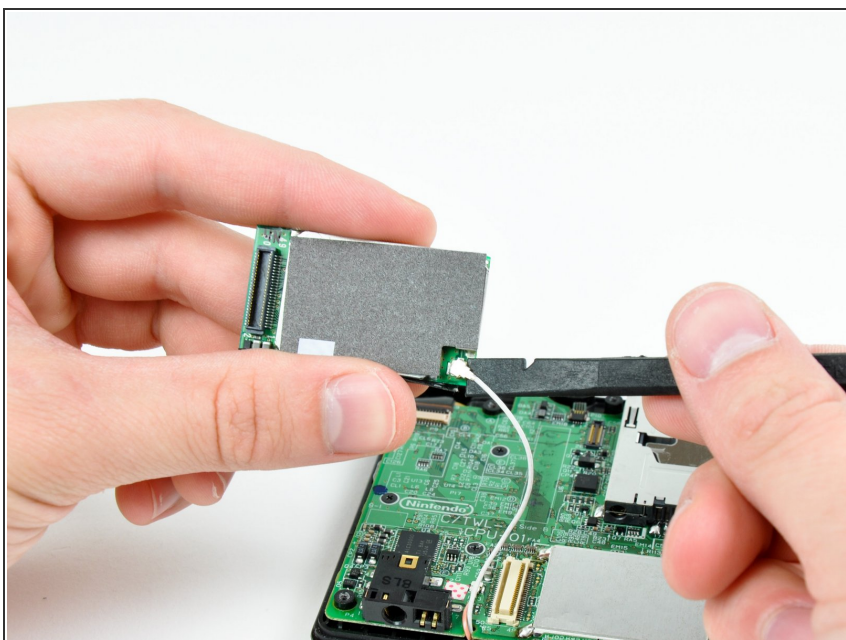
- Carefully lift the lower casing from its bottom edge.
- ⚠ The lower case is still attached to the motherboard by the volume and SD board cable highlighted in red. Do not try to completely remove the lower case of the DSi yet.
- Pry the volume and SD board cable up from its socket on the motherboard with the flat edge of a screwdriver.
- once the cable, highlighted in the orange box, is completely removed then you may take off the entire outer casing.

Step 7



- Pull the Wi-Fi board away from the motherboard by its edge closest to the headphone jack.

Step 8



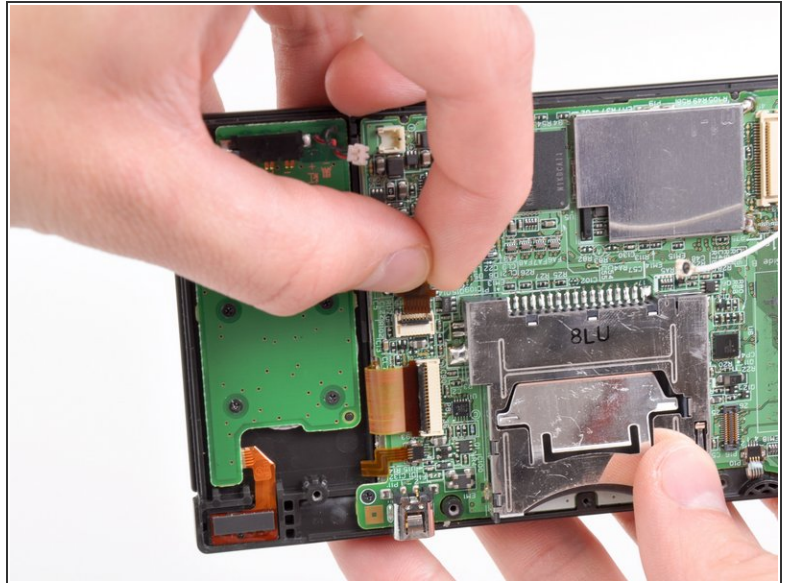
- Pry the Wi-Fi antenna connector straight up from its socket on the Wi-Fi board.

Step 9



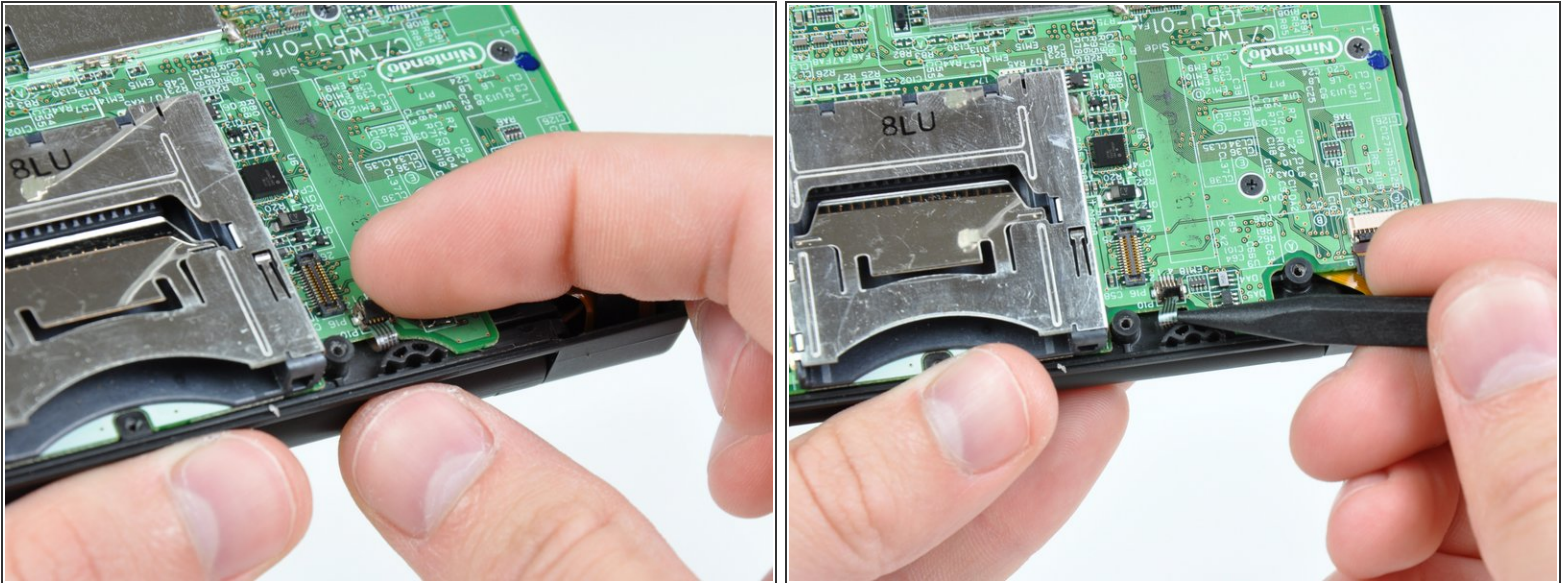
- Use the tip of a spudger to pry the power board connector out of its socket on the motherboard.

Step 10



- Use your fingernail or the edge of a plastic opening tool to flip up the retaining flap on the following three ZIF sockets:
 - Lower touchscreen cable
 - Lower LCD cable
 - Power board cable
- ⚠ Be sure you are prying up on the hinged retaining flaps, **not** the sockets themselves.
- After flipping up the locking tabs on all three sockets, use your fingers or a pair of tweezers to gently pull the cables straight out of their sockets.

Step 11

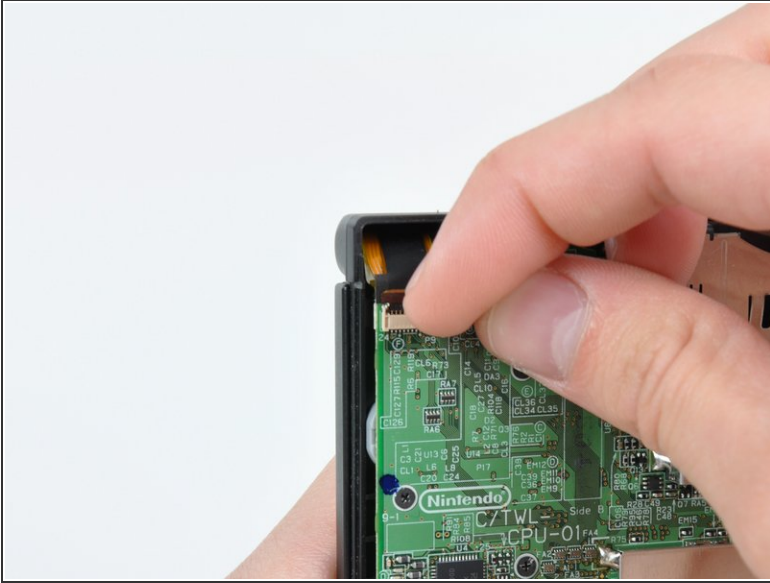


- Use your fingernail or the edge of a plastic opening tool to carefully flip up the touchscreen ribbon cable retaining flap.

⚠ Make sure you are flipping up the retaining flap, **not** the socket itself.

- Use the tip of a spudger to pull the touchscreen ribbon cable straight out of its socket.

Step 12

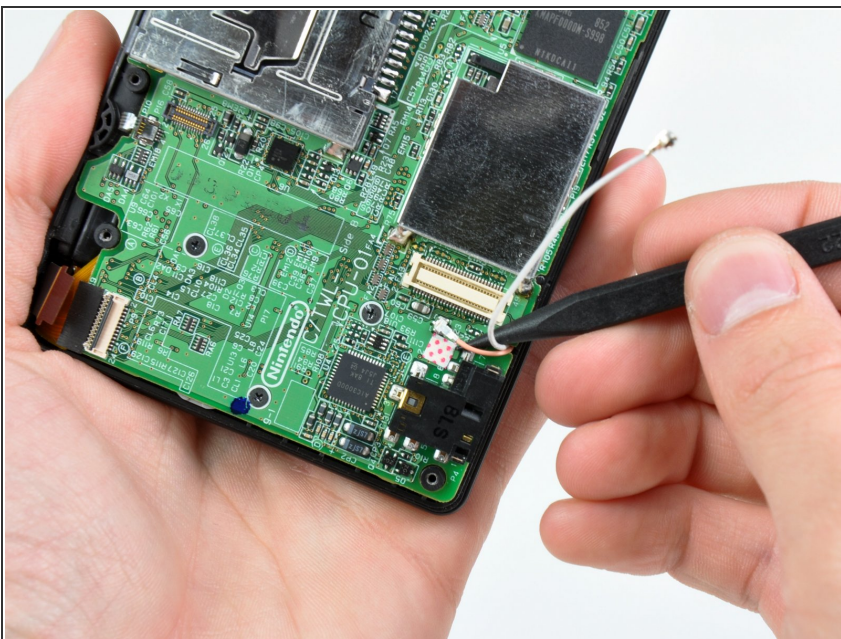


- Use your fingernail or the edge of a plastic opening tool to carefully flip up the dual camera ribbon cable retaining flap.

⚠ Make sure you are flipping up the retaining flap, **not** the socket itself.

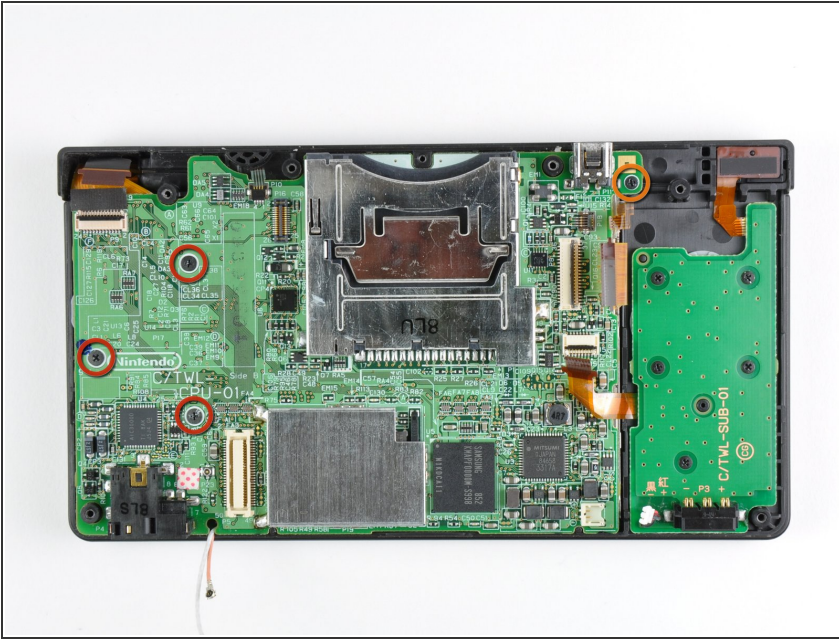
- Use the tip of a spudger to pull the dual camera ribbon cable straight out of its socket.

Step 13



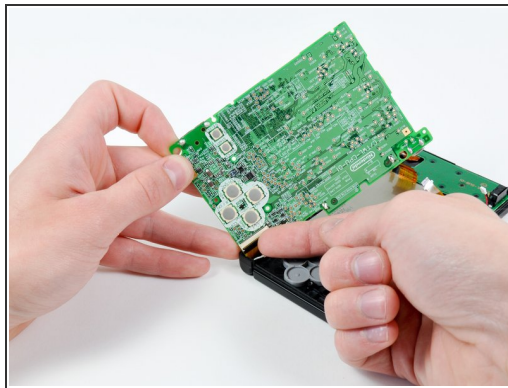
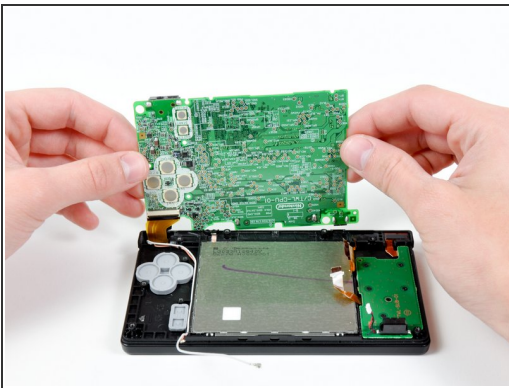
- With the tip of a spudger, Pry the microphone antenna up off its socket on the motherboard.

Step 14



- Remove the following four Phillips screws securing the motherboard to the DSi framework.
 - Three longer screws.
 - One short screw.
- Pull the microphone and Wi-Fi antenna cables out of the notch cut into the motherboard near the headphone jack.

Step 15

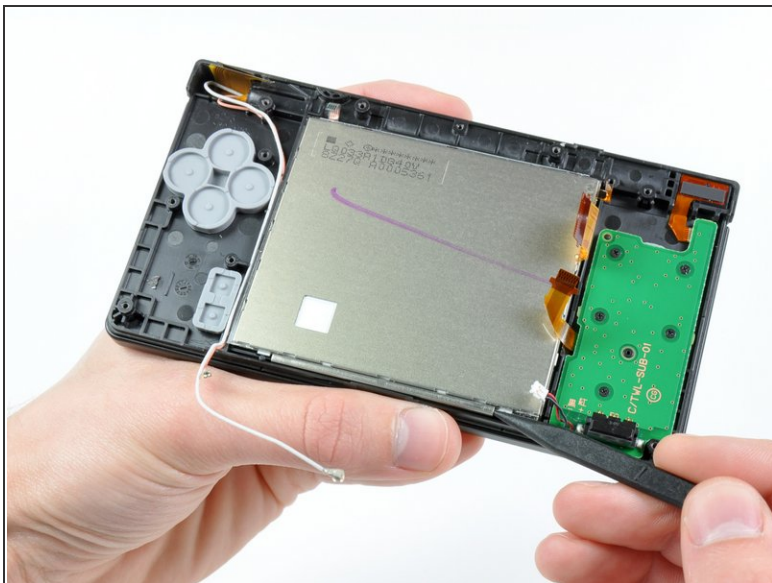


- Slightly lift the motherboard upwards to reveal the upper LCD ribbon cable above the ABXY buttons .
- Use your fingernail or the edge of a plastic opening tool to carefully flip up the upper LCD ribbon cable retaining flap.

⚠ Make sure you are flipping up the retaining flap, **not** the socket itself.

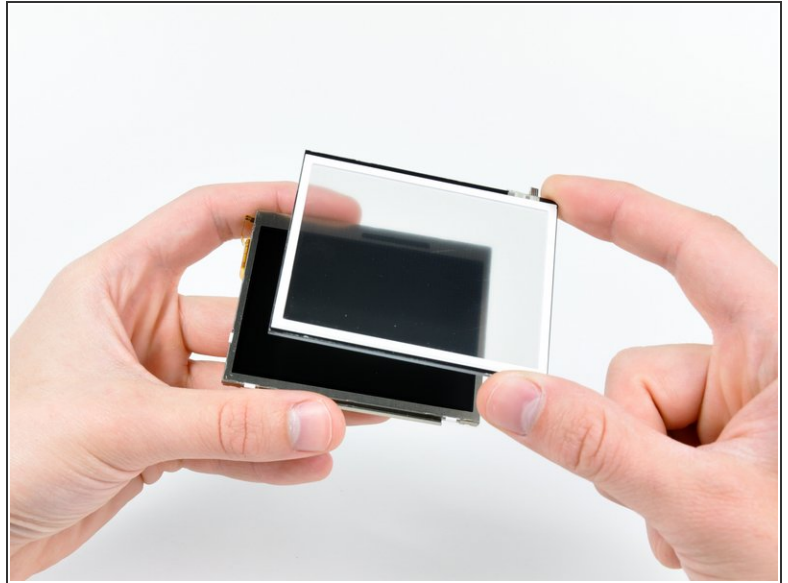
- Remove the motherboard from the DSi.

Step 16



- Use the tip of a spudger to pry the metal backing of the lower LCD up from the DSi's framework.
- Lift the lower LCD assembly out of the DSi.

Step 17



- Insert the edge of a plastic opening tool between the lower touchscreen and the lower LCD.
- Carefully run the edge of the opening tool along the perimeter of the touchscreen to detach it from the lower LCD.
- Remove the touchscreen from the lower LCD.

Step 18



- Touchscreen remains.

To reassemble your device, follow these instructions in reverse order.