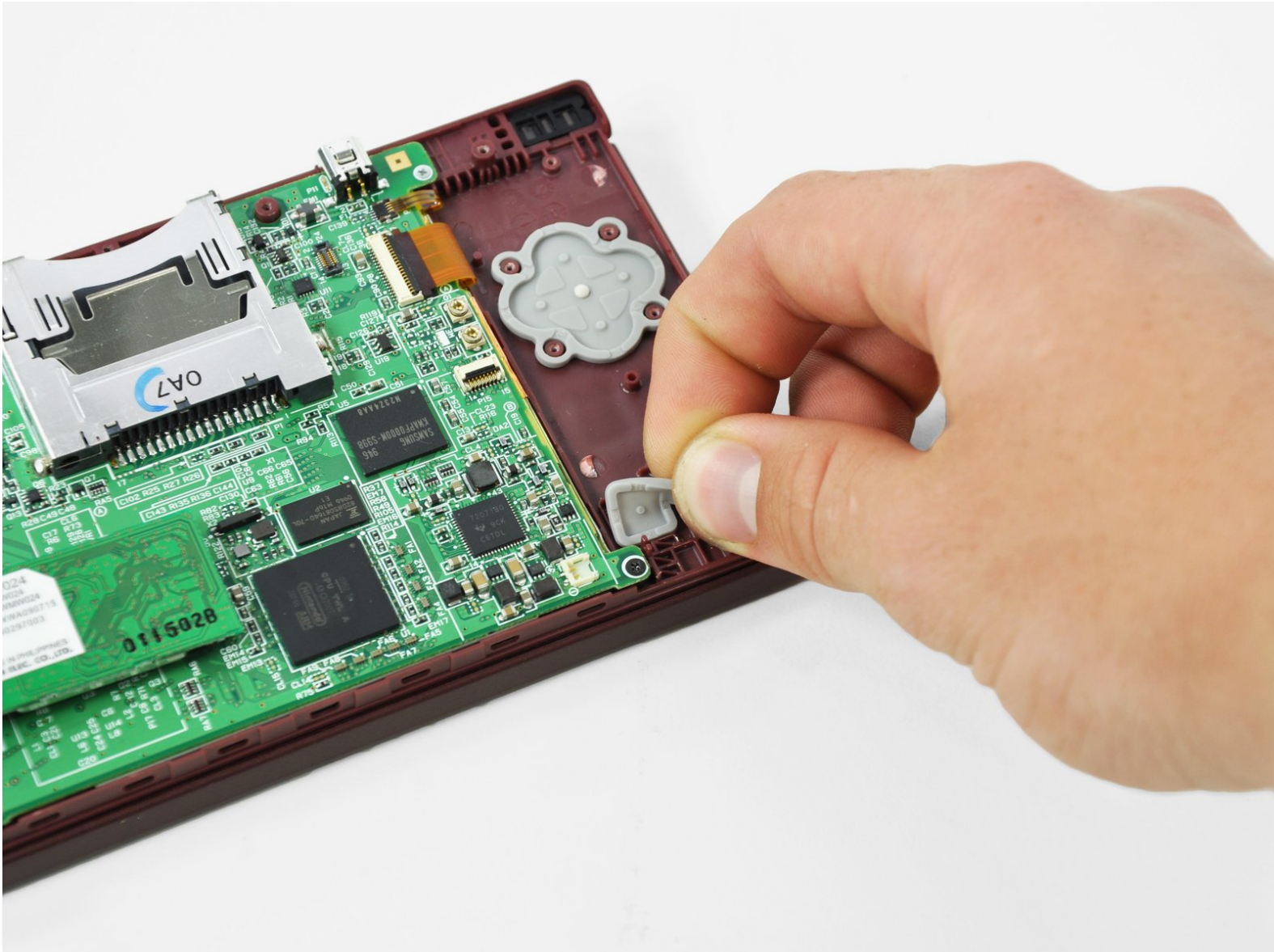




Nintendo DSi XL Power Button Replacement

Written By: Dozuki System



INTRODUCTION

Regain power over your DSi XL by replacing or cleaning a faulty or sticky power button.



TOOLS:

- [Phillips #00 Screwdriver](#) (1)
- [Push Pin](#) (1)
- [Spudger](#) (1)



PARTS:

- [Nintendo DSi XL Input Button Pads](#) (1)
- [Nintendo DSi XL Input Buttons](#) (1)

Step 1 — Nintendo DSi XL Power Button Replacement



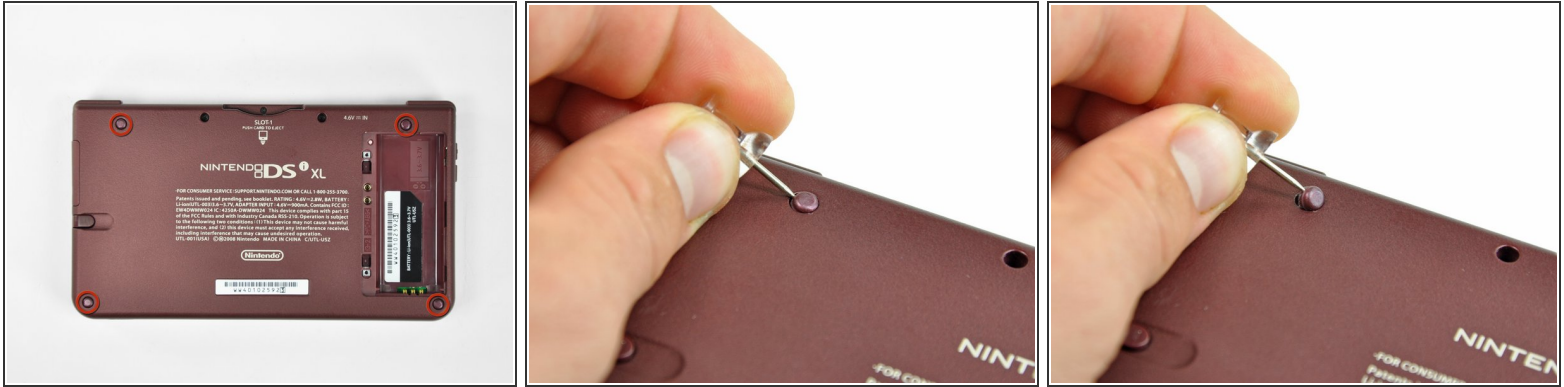
- Remove the two Phillips screws securing the battery cover to the back of the handheld console.
- Lift the battery cover off the back of the DSi XL.

Step 2



- Lift the battery from the DSi XL.

Step 3



- Remove the four rubber screw covers on the lower case by prying them up with a push pin.


Step 4



- Remove the following seven Phillips screws that secure the lower case to the rest of the DSi XL:
 - Four silver 5.3 mm screws
 - Two black 5.3 mm screws
 - One black 2.5 mm screw

Step 5



 Turn the DSi XL over, and open the display.

- Insert a spudger between the upper and lower case at the bottom left corner of the DSi.
- Slide the spudger along the bottom edge of the upper case to release the latches securing the upper case to the lower case.

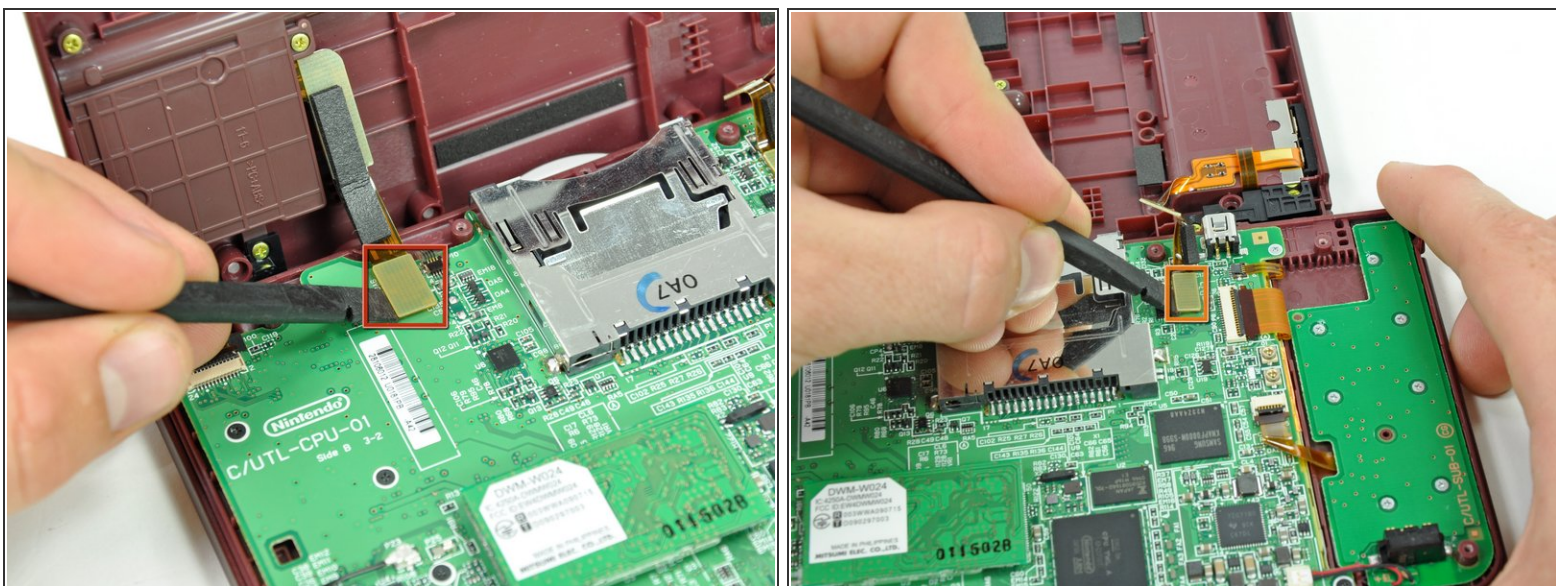
Step 6



- i** Close the display and turn the DSi XL over.

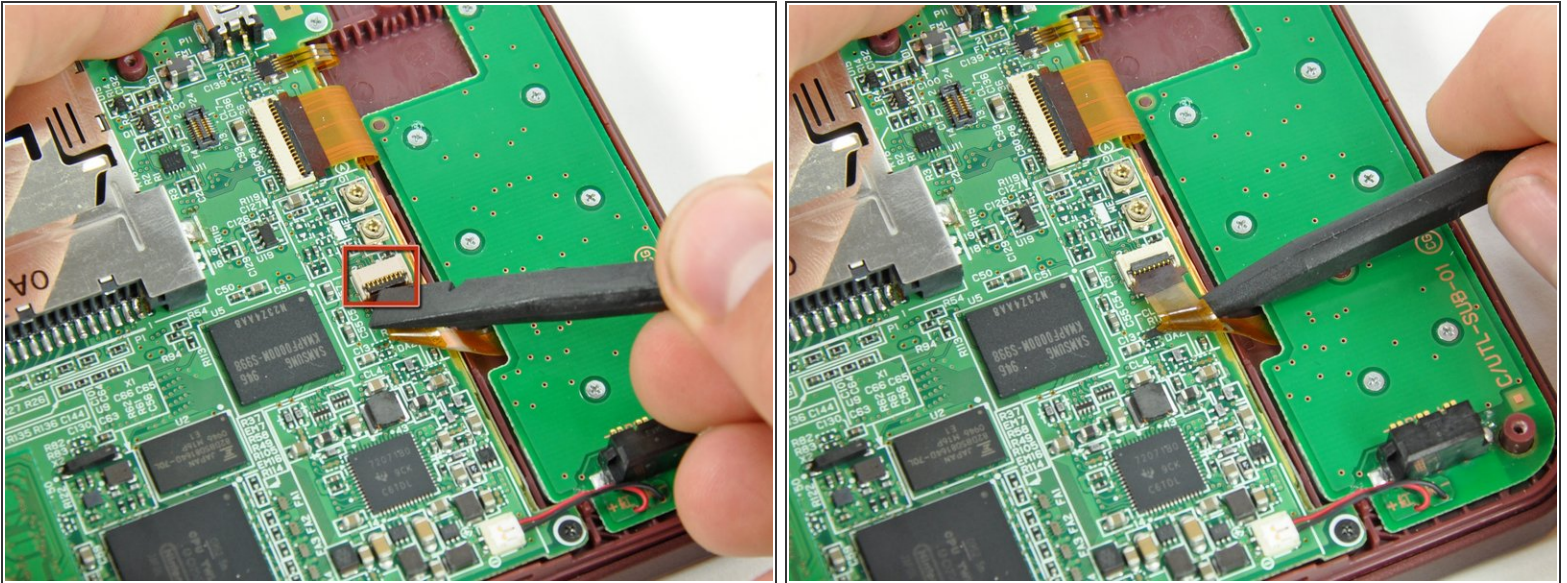
 - Lift the lower case from the front edge.
 - Rotate the lower case away from the DSi.
- i** The lower case cannot be completely removed yet, since it is still connected to the motherboard.

Step 7



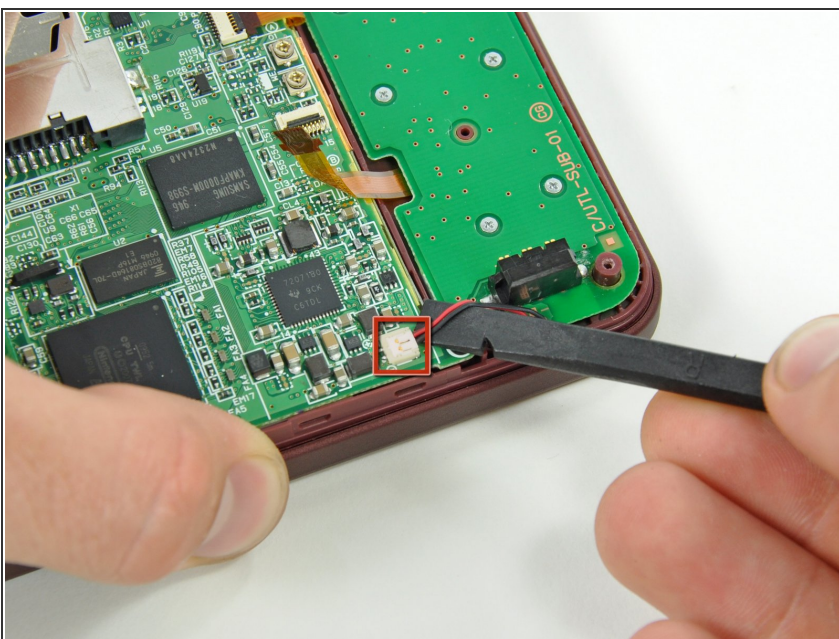
- Using a spudger, pry the SD card/right shoulder button connector off its socket.
- Pry the volume button/left shoulder button connector off its socket on the motherboard with a spudger.

Step 8



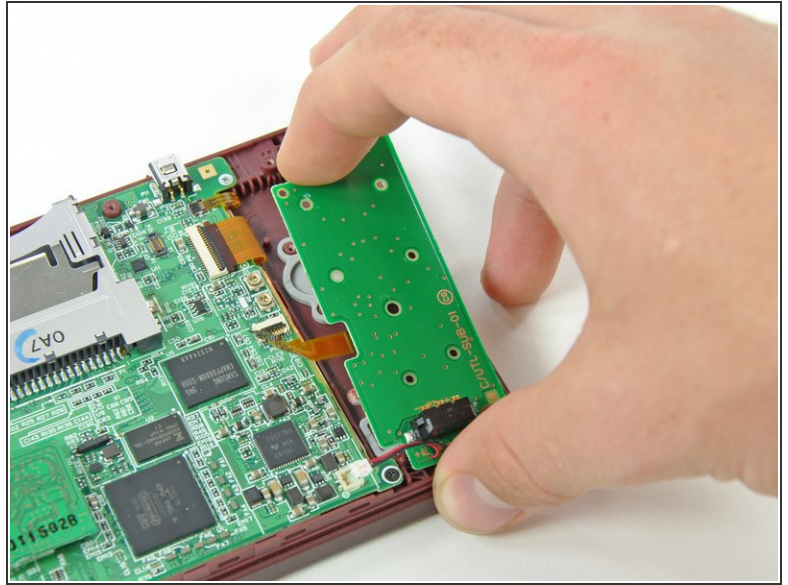
- Using the flat end of a spudger, flip up the retaining flap on the ZIF connector for the D-pad/power button cable.
- With the pointed end of the spudger, pull the D-pad/power button cable from its connector on the motherboard.

Step 9



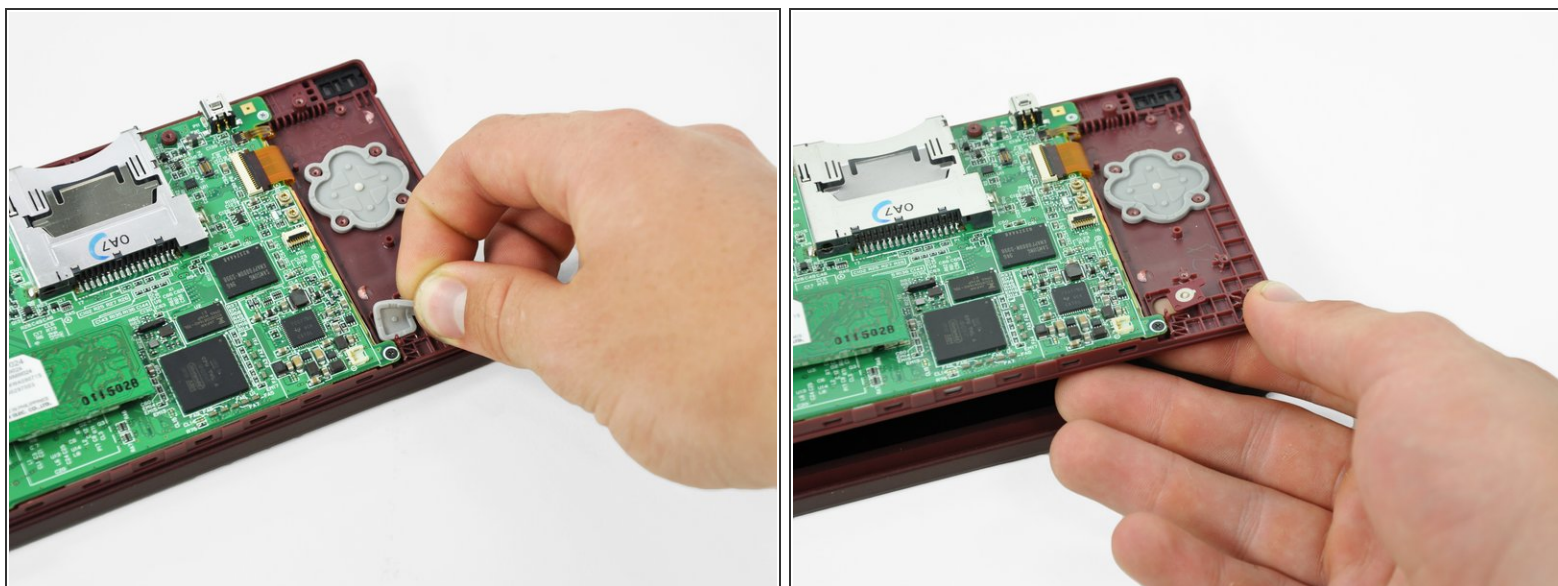
- Using the flat end of the spudger, carefully pry the battery cable out of its socket on the motherboard.
- ⚠ Use caution, as the wires are very fragile and could come out of the connector if pulled on too hard.

Step 10



- Remove the seven 2.5 mm silver screws securing the power board to the upper case.
- Lift the power board off the upper case.

Step 11



- Lift the rubber pad off the back of the power button.
- Open the display slightly and push the power button up through the upper case.
- Remove the power button from the handheld console.

To reassemble your device, follow these instructions in reverse order.