



# Nintendo DSi XL Start/Select Buttons Replacement

Written By: Dozuki System



# INTRODUCTION



## TOOLS:

- [Phillips #00 Screwdriver](#) (1)
- [Push Pin](#) (1)
- [Spudger](#) (1)



## PARTS:

- [Nintendo DSi XL Input Button Pads](#) (1)
- [Nintendo DSi XL Input Buttons](#) (1)

## Step 1 — Nintendo DSi XL Start/Select Buttons Replacement



- Remove the two Phillips screws securing the battery cover to the back of the handheld console.
- Lift the battery cover off the back of the DSi XL.

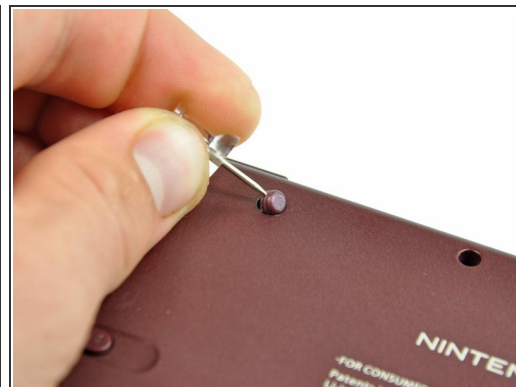
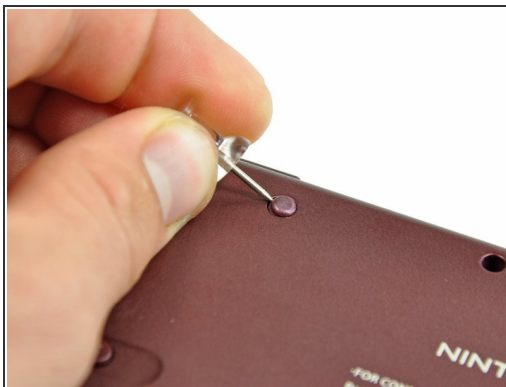
## Step 2



- Lift the battery from the DSi XL.



## Step 3



- Remove the four rubber screw covers on the lower case by prying them up with a push pin.


## Step 4



- Remove the following seven Phillips screws that secure the lower case to the rest of the DSi XL:
  - Four silver 5.3 mm screws
  - Two black 5.3 mm screws
  - One black 2.5 mm screw

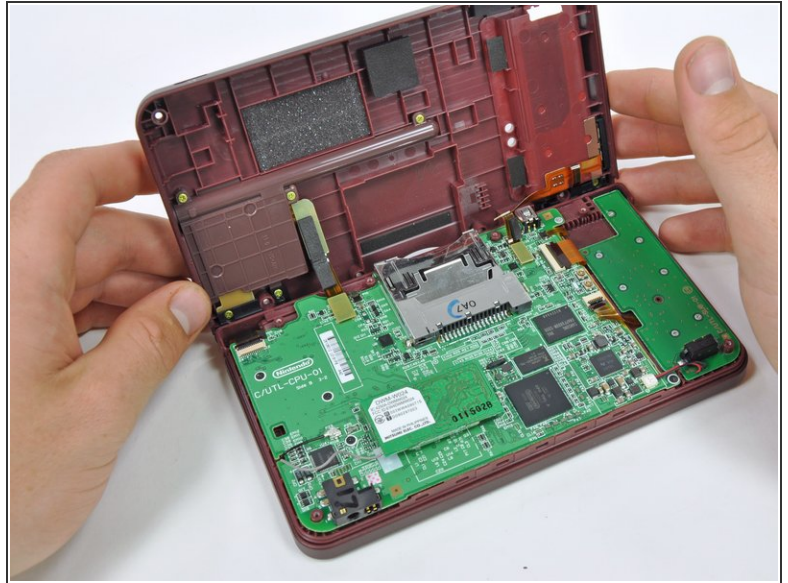
## Step 5



 Turn the DSi XL over, and open the display.

- Insert a spudger between the upper and lower case at the bottom left corner of the DSi.
- Slide the spudger along the bottom edge of the upper case to release the latches securing the upper case to the lower case.

## Step 6

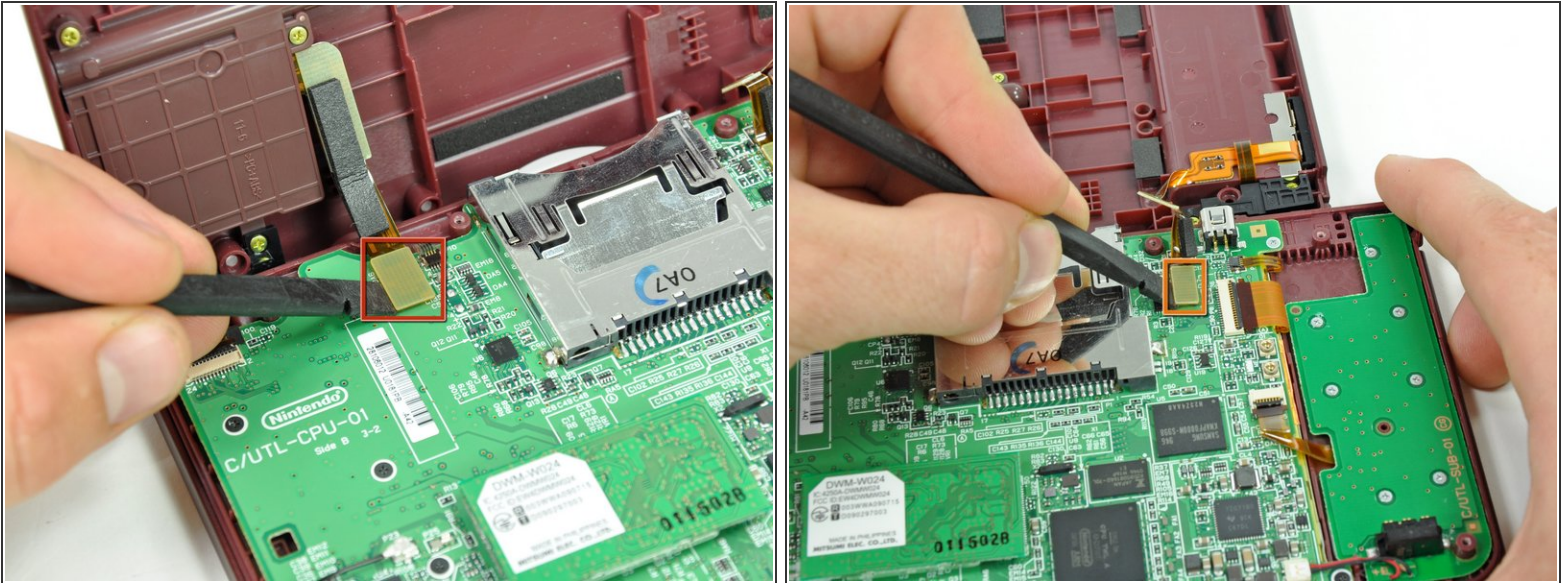


- i** Close the display and turn the DSi XL over.

  - Lift the lower case from the front edge.
  - Rotate the lower case away from the DSi.
- i** The lower case cannot be completely removed yet, since it is still connected to the motherboard.

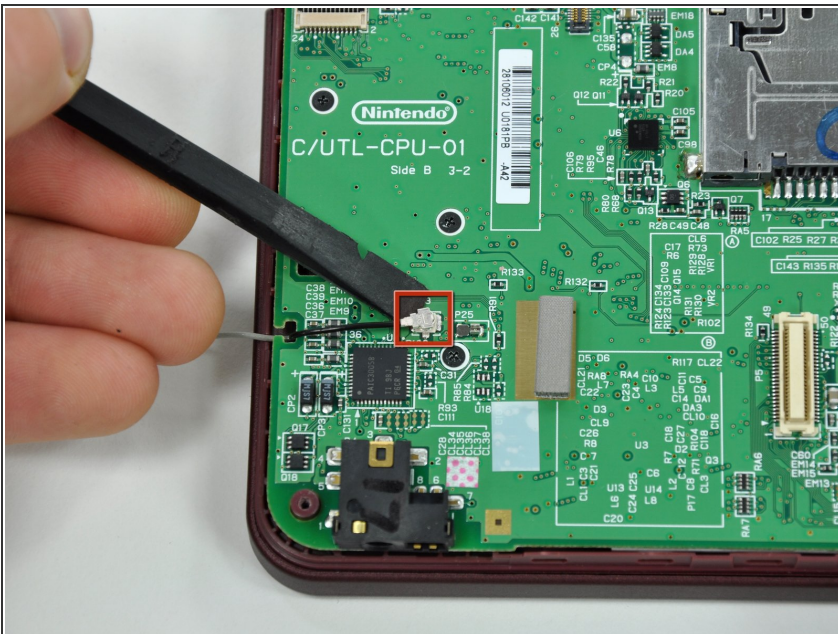


## Step 7



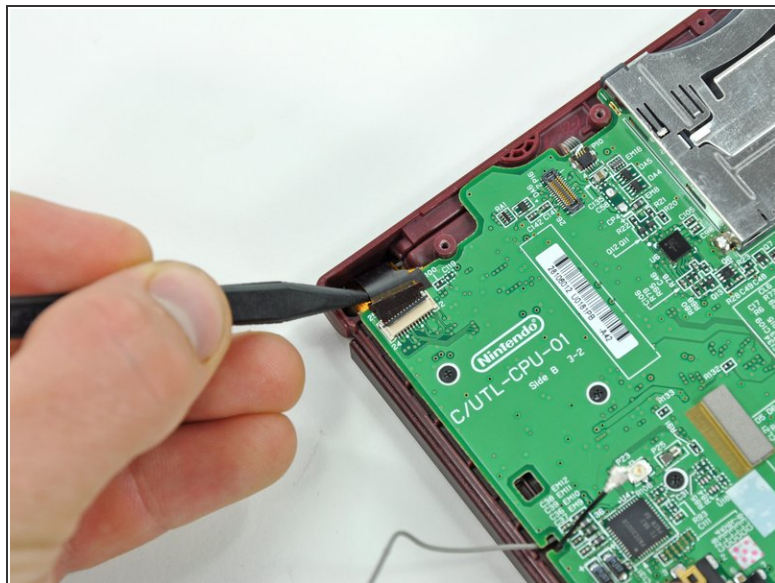
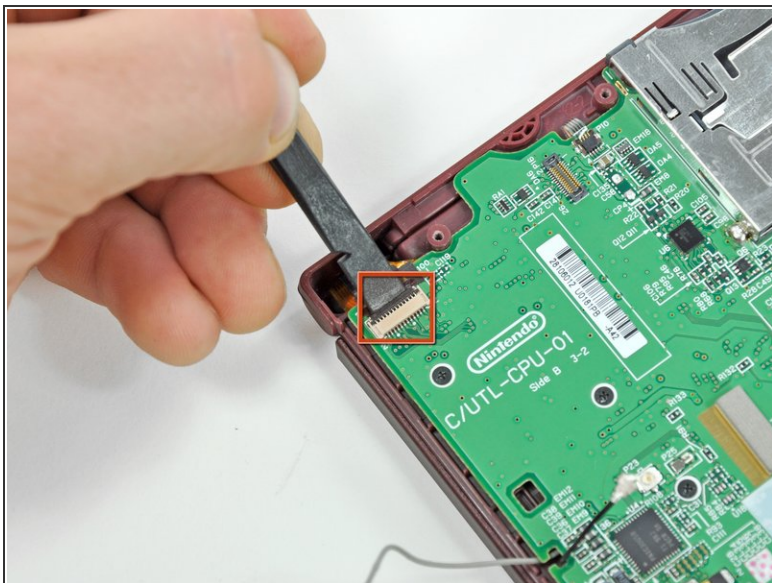
- Using a spudger, pry the SD card/right shoulder button connector off its socket.
- Pry the volume button/left shoulder button connector off its socket on the motherboard with a spudger.

## Step 8



- Use a spudger to pry the microphone cable off the motherboard.
- ① Pry from underneath the cable.

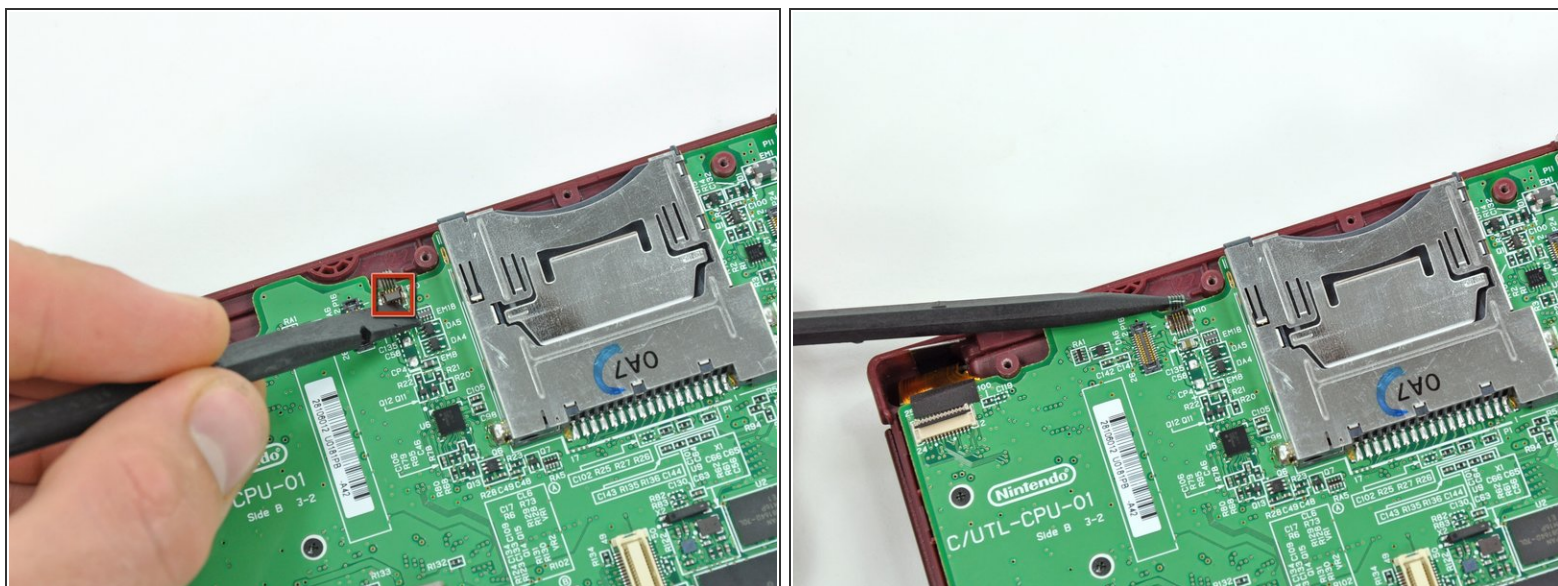
## Step 9



- Using the flat end of a spudger, flip up the retaining flap on the camera ribbon ZIF connector.
- Use the pointed end of a spudger to pull the camera ribbon from the ZIF connector.

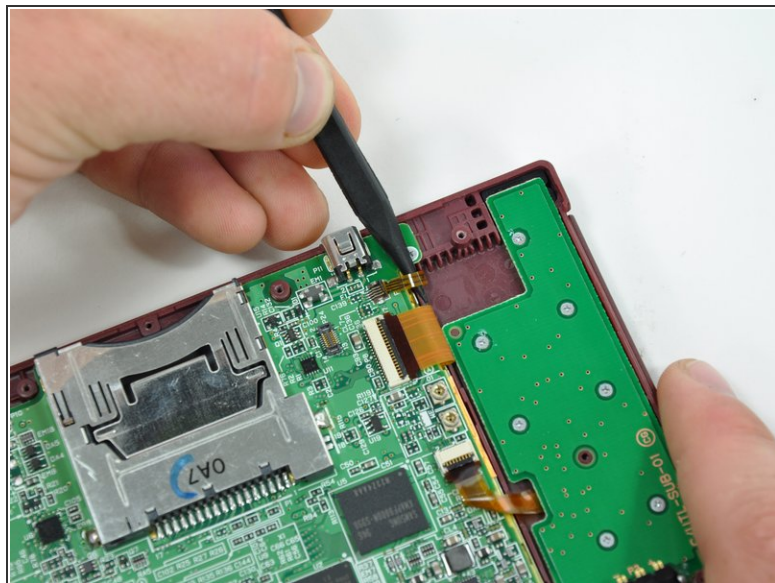
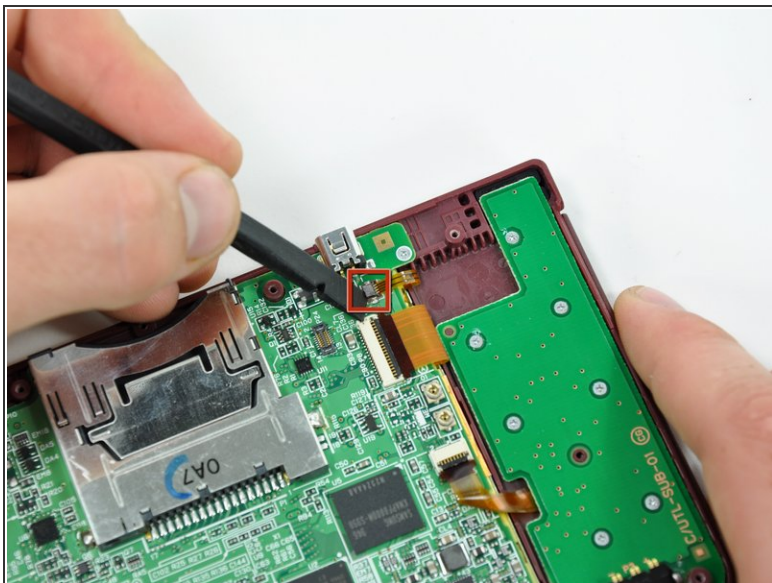


## Step 10



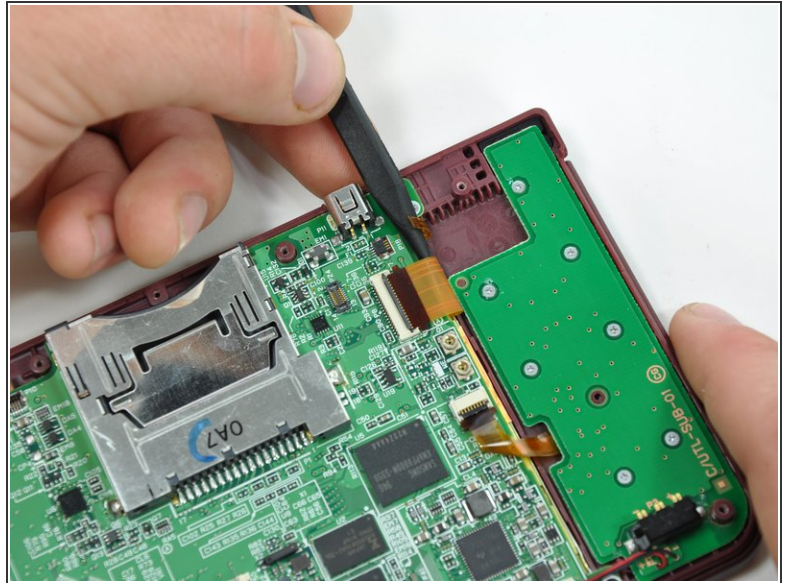
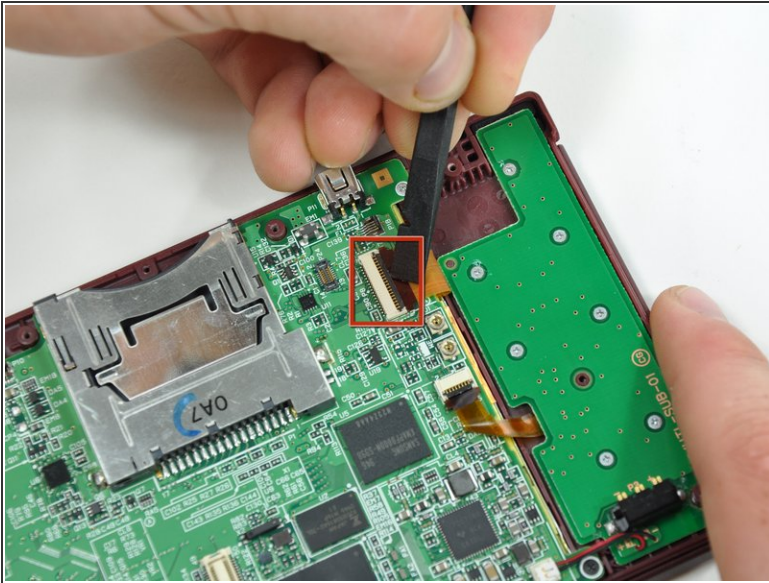
- Using the flat end of a spudger, flip up the retaining flap on the touchscreen cable ZIF connector.
- With the pointed end of the spudger, pull the touchscreen cable from its connector on the motherboard.

## Step 11



- Using the flat end of a spudger, flip up the retaining flap on the backlight cable ZIF connector.
- With the pointed end of the spudger, pull the backlight cable from its connector on the motherboard.

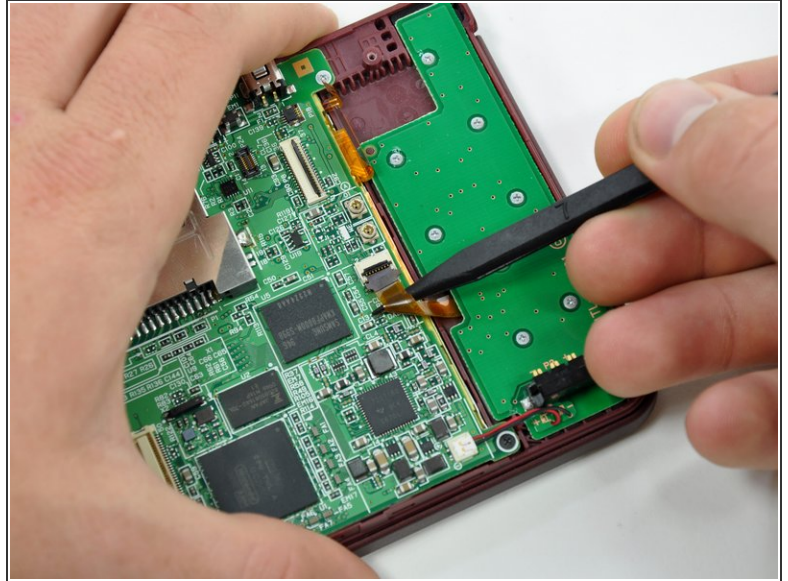
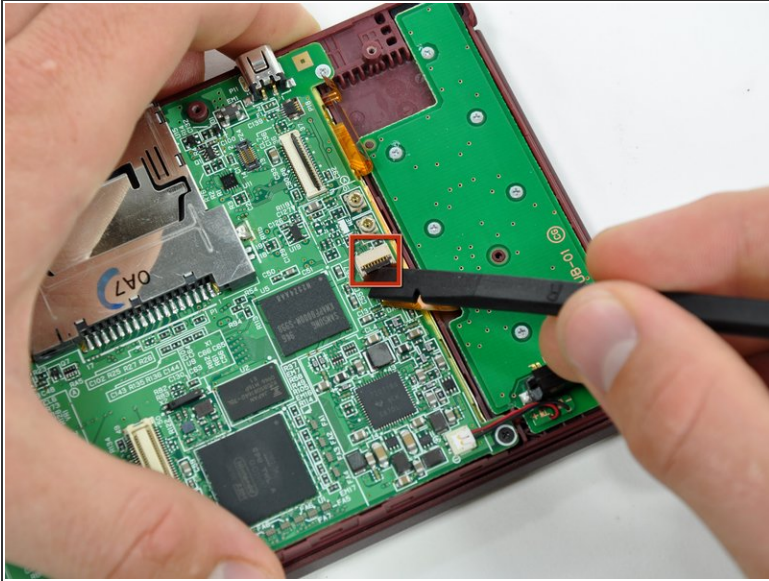
## Step 12



- Using the flat end of a spudger, flip up the retaining flap on the lower display data cable ZIF connector.
- With the pointed end of the spudger, pull the lower display data cable from its connector on the motherboard.

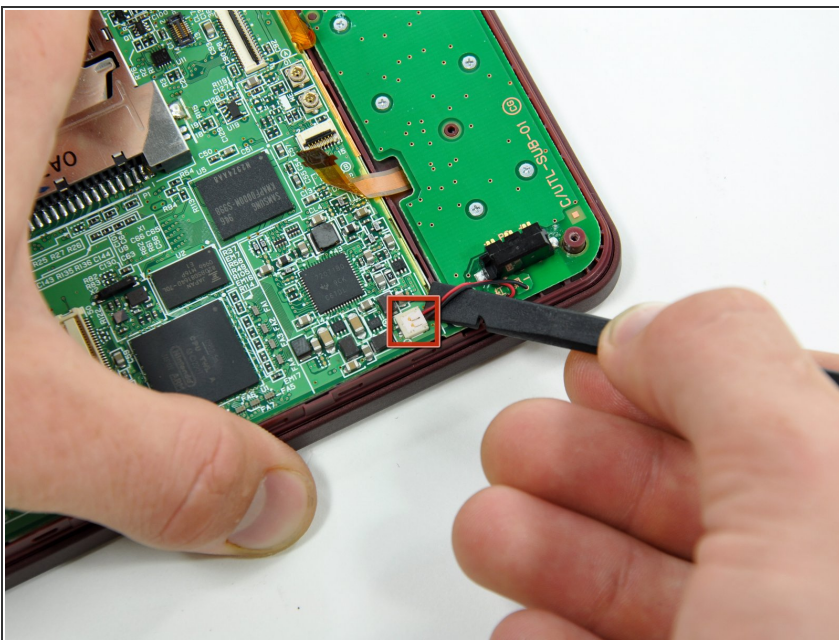


## Step 13



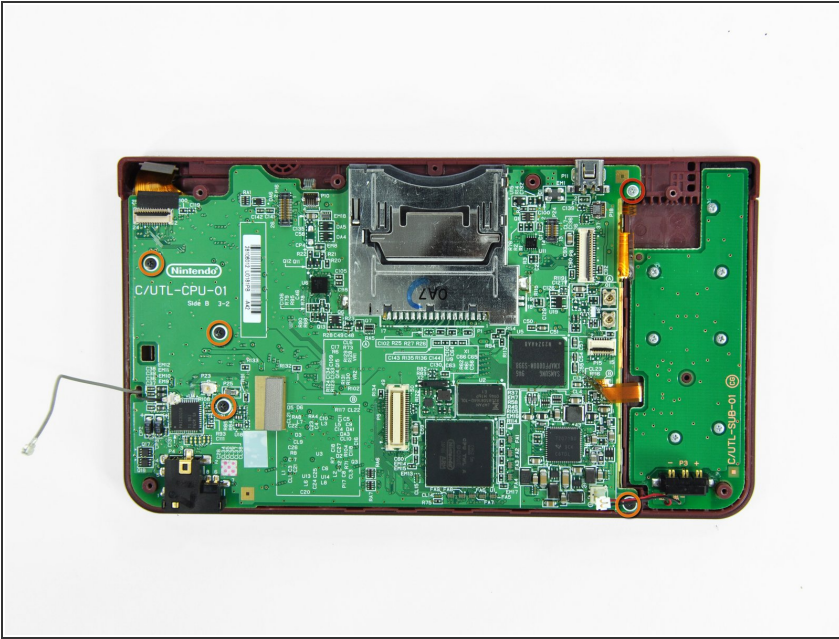
- Using the flat end of a spudger, flip up the retaining flap on the ZIF connector for the D-Pad/power button cable.
- With the pointed end of the spudger, pull the D-Pad/power button cable from its connector on the motherboard.

## Step 14



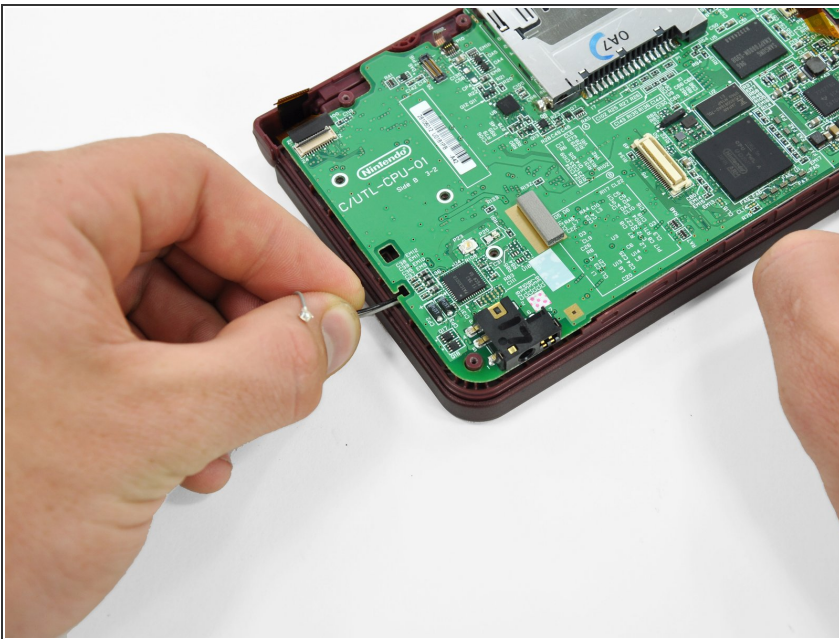
- Using the flat end of the spudger, pry the battery cable up off its socket on the motherboard.

## Step 15



- Remove the screws securing the motherboard to the upper case:
  - A single 2.5 mm silver Phillips screw
  - Four 3.7 mm black Phillips screws

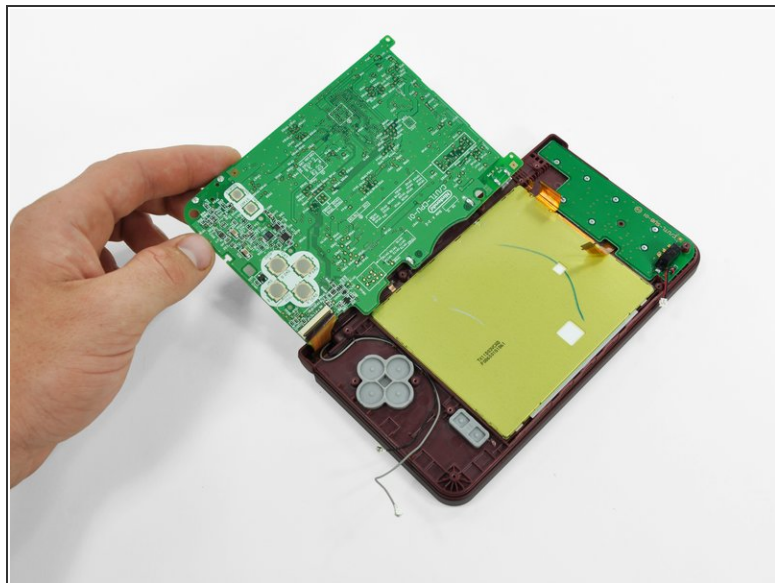
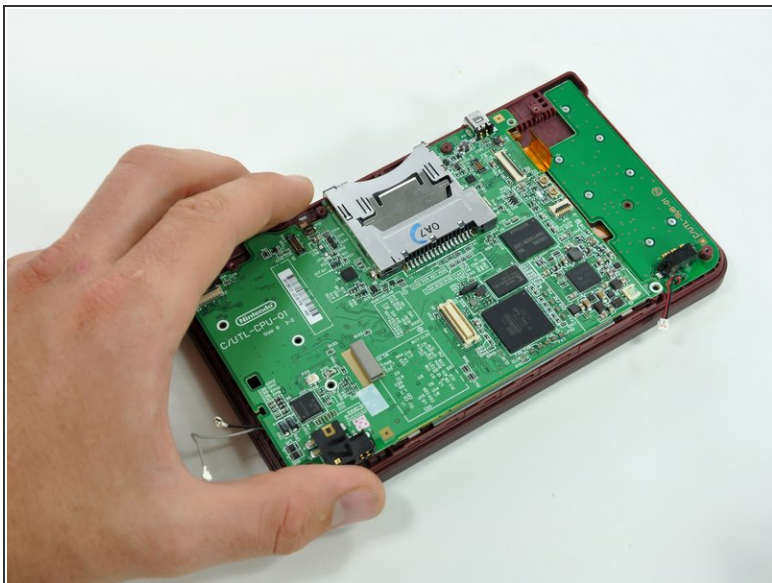
## Step 16



- Deroute the microphone and antenna cables through the slot in the motherboard.



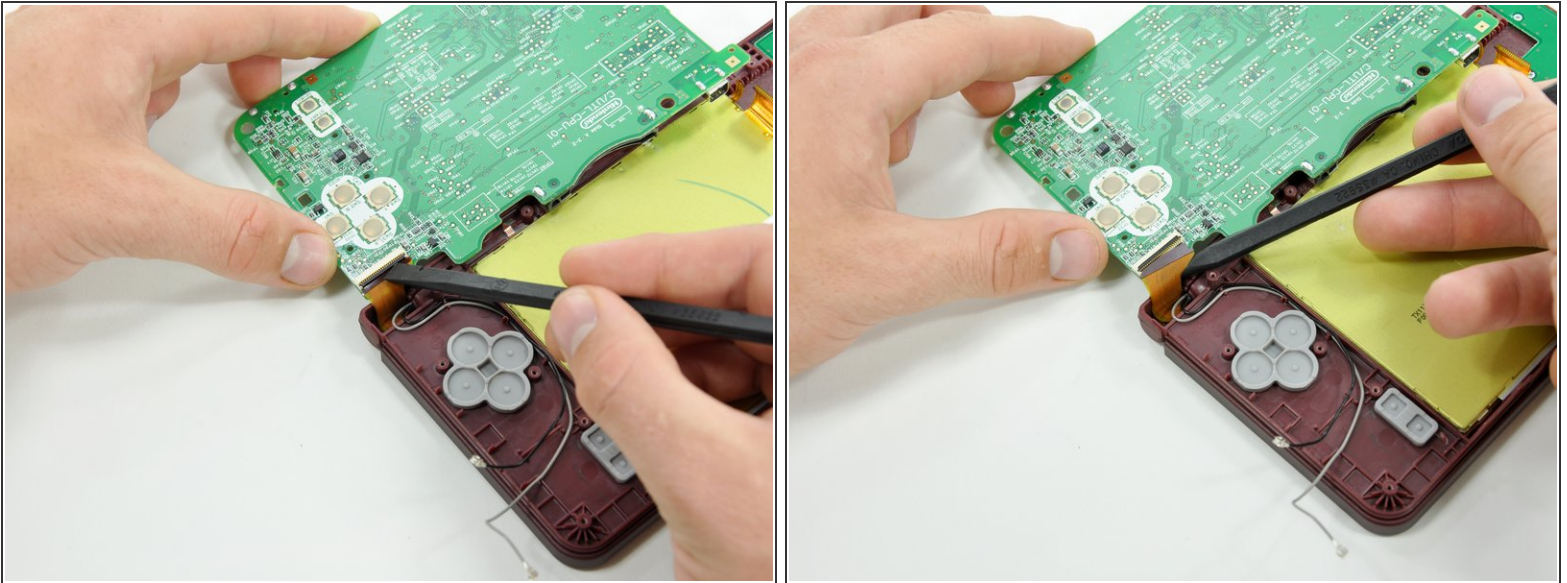
## Step 17



- Rotate the motherboard off the lower case.
- ⓘ The motherboard cannot be completely removed yet. It is still attached by the upper LCD's display data ribbon cable.



## Step 18



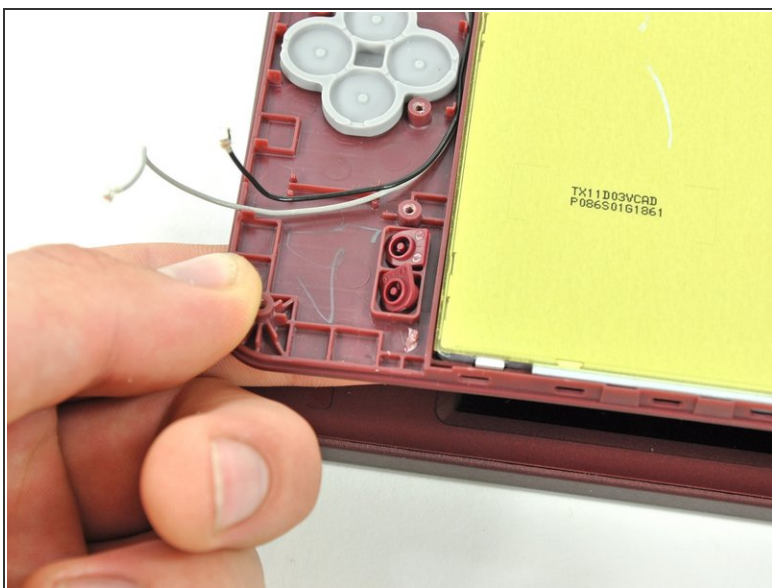
- Using the flat end of a spudger, flip up the retaining flap on the upper display data cable ZIF connector.
  - With the pointed end of the spudger, pull the upper display data cable from its connector on the underside of the motherboard.
- i** The motherboard is now free from the upper case.

## Step 19



- Lift the rubber pad off the back of the start/select buttons.

## Step 20



- Open the display slightly and push the start and select buttons up through the upper case.
- Remove the start/select buttons from the DSi XL.

To reassemble your device, follow these instructions in reverse order.