



Nintendo DSi XL Rear Bezel Replacement

Written By: Dozuki System



INTRODUCTION

Be the envy of onlooking gamers with a shiny new rear bezel on your DSi XL.



TOOLS:

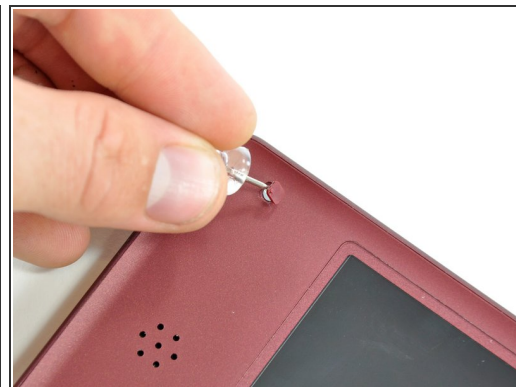
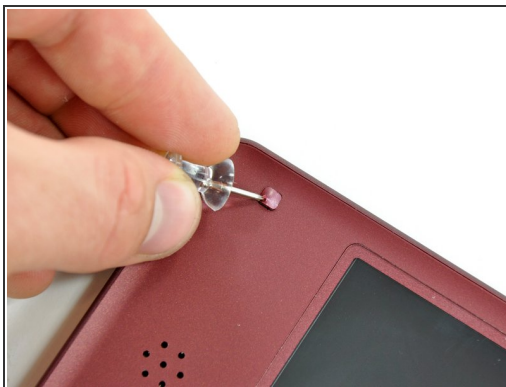
- [Phillips #00 Screwdriver](#) (1)
- [Push Pin](#) (1)
- [Spudger](#) (1)



PARTS:

- [Nintendo DSi XL Outer Shell](#) (1)

Step 1 — Nintendo DSi XL Rear Bezel Replacement



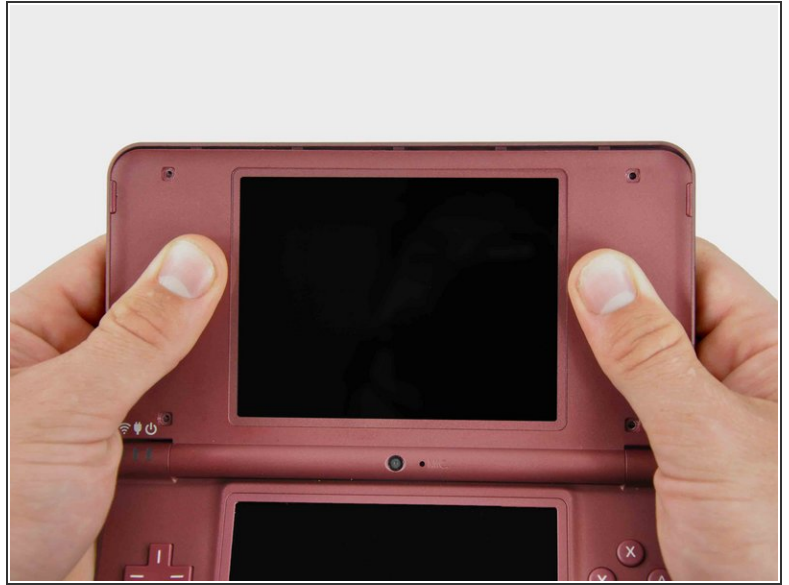
- Use a push pin to remove the four plastic screw covers on the front bezel.

Step 2



- Remove four Phillips screws securing the front bezel to the rear bezel.

Step 3



- Using two hands, gently slide the rear bezel upwards.
- ⓘ The rear bezel will move only about 2 mm.

Step 4



- Insert a spudger into the gap between the front and rear bezel
- Rotate the spudger away from the DSi XL, prying the two bezels apart.

Step 5



- In the same manner as described above, continue prying along the top edge of the front and rear bezels.

Step 6



- Separate the rear bezel from the front bezel.
- ⚠ Do not attempt to completely remove the rear bezel yet. It is still attached to the front bezel by the rear-facing camera.

Step 7



- Use the flat end of a spudger to pry the rear camera off the rear bezel.
- Remove the rear bezel.

To reassemble your device, follow these instructions in reverse order.