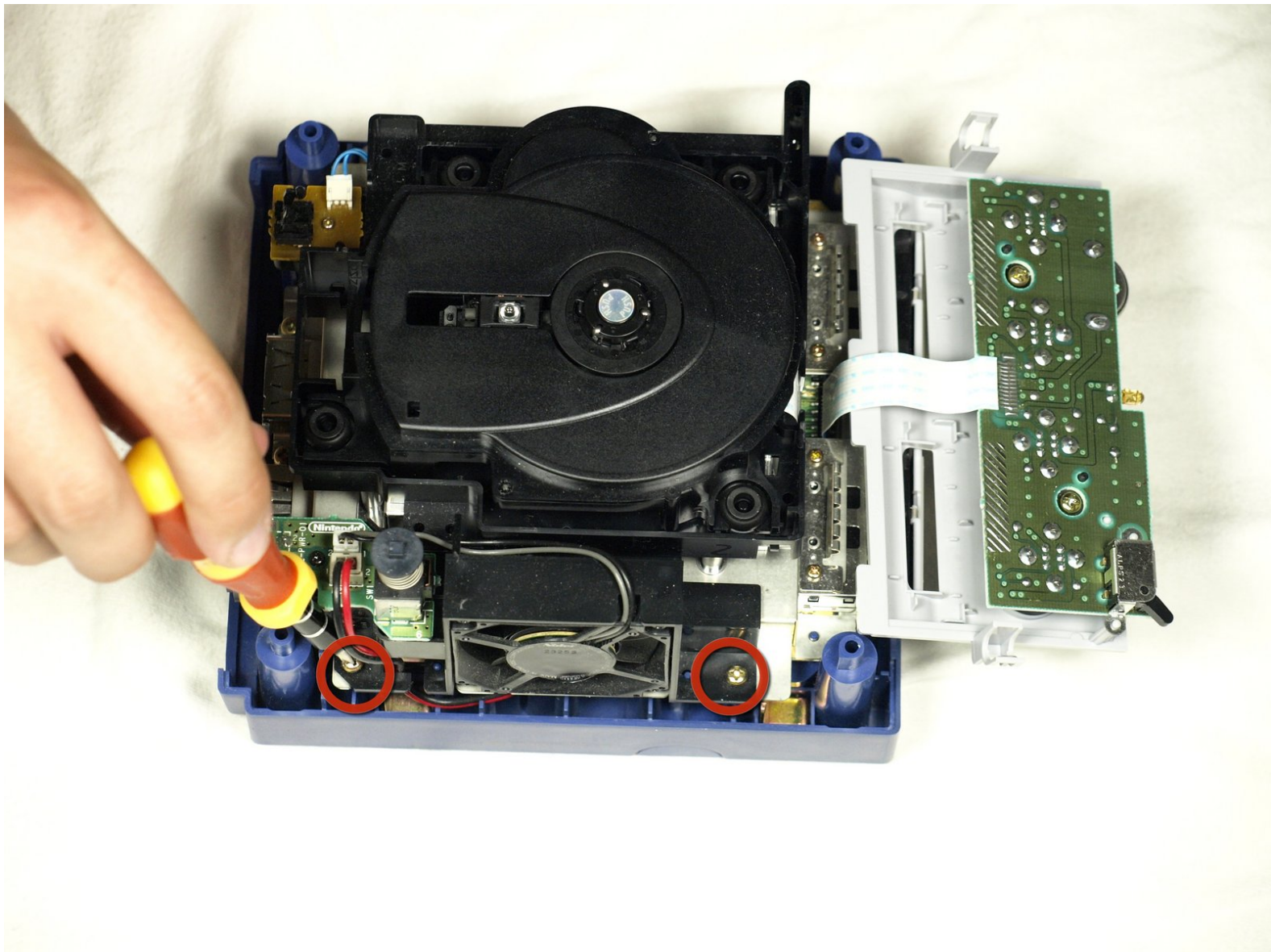




Nintendo GameCube Fan replacement for cleaning

Written By: Dozuki System



INTRODUCTION

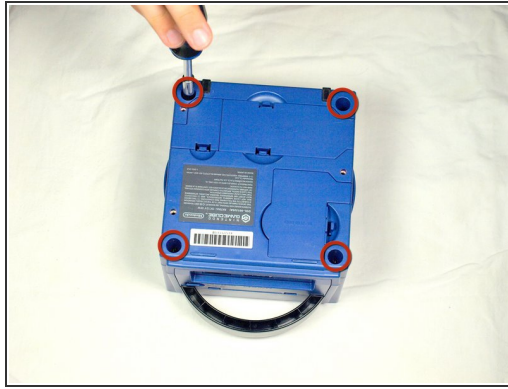
This guide shows how to properly remove and clean the fan. This will help prevent your GameCube from overheating.



TOOLS:

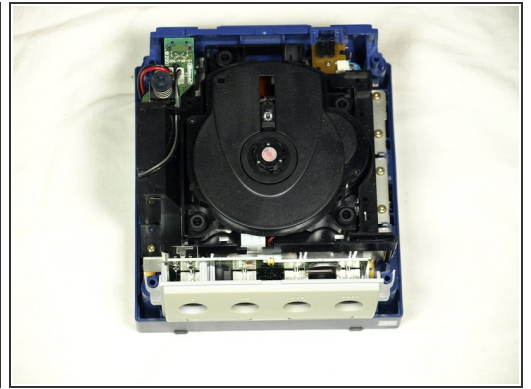
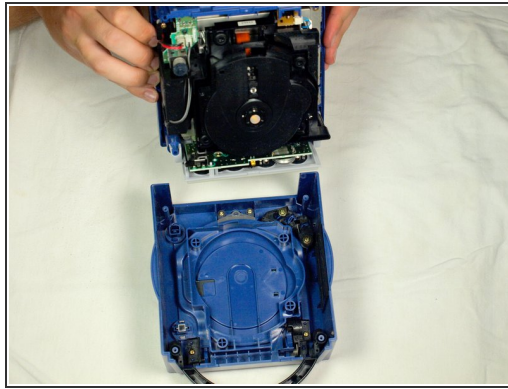
- [Nintendo GameCube Bit Tool](#) (1)
 - [Phillips #1 Screwdriver](#) (1)
 - [Phillips #2 Screwdriver](#) (1)
-

Step 1 — Nintendo GameCube Fan replacement for cleaning



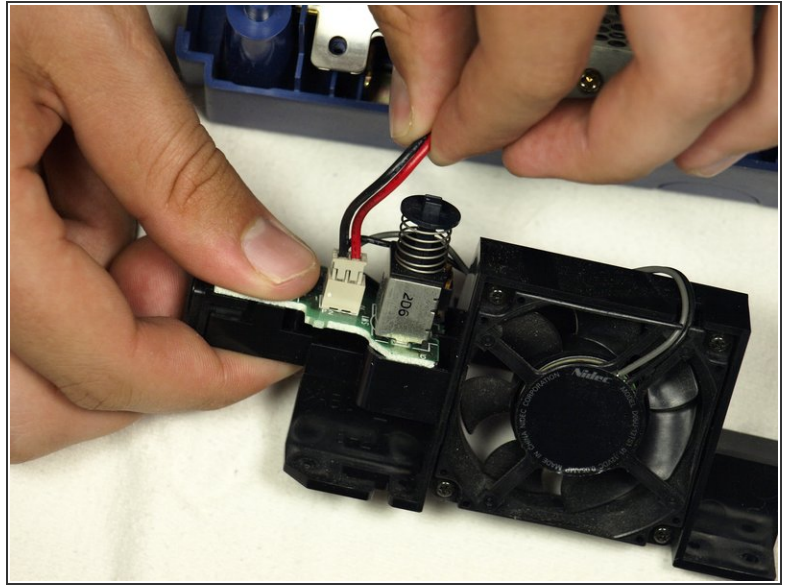
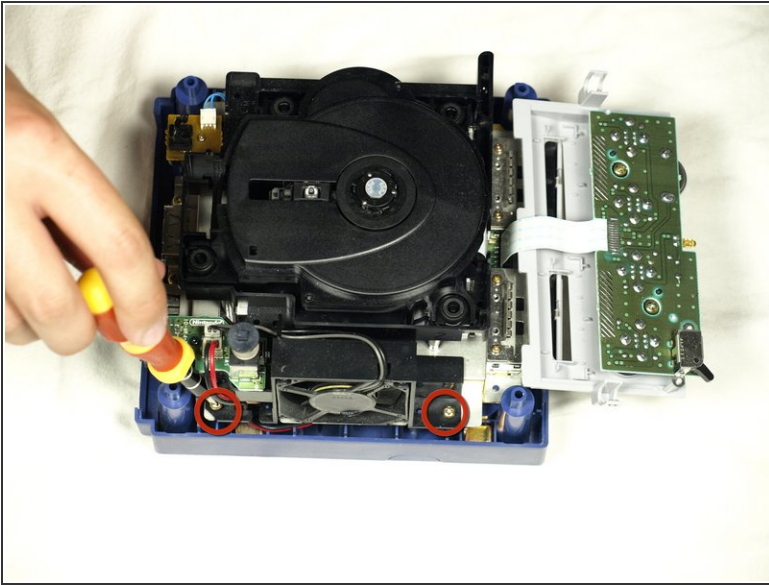
- Turn over the Gamecube so that the bottom side is facing up.
- Locate the four screws (circled in red) on each corner of the device. Then, use a 4.5 mm Gamebit screwdriver to remove all four screws.

Step 2



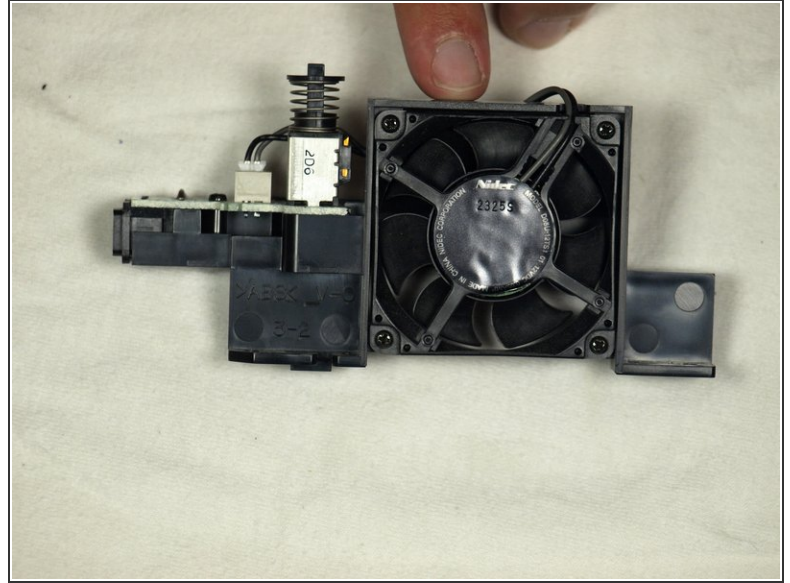
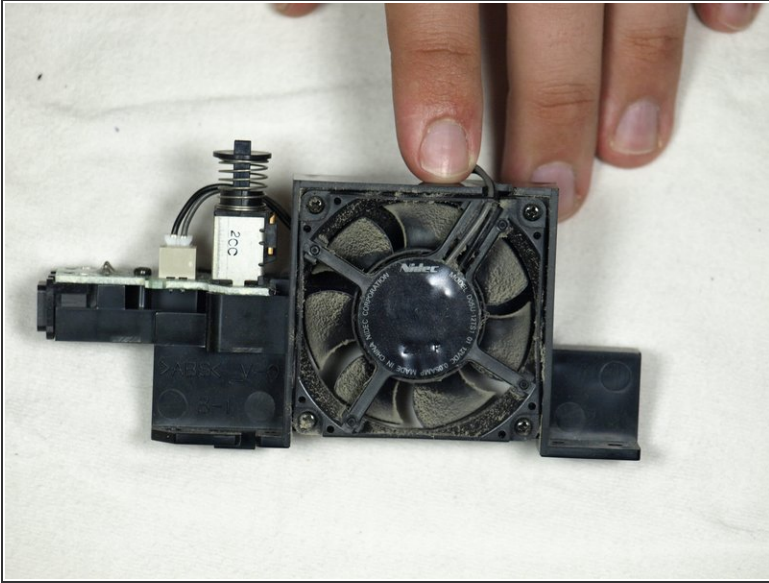
- With the bottom side of the GameCube facing upward and the screws removed, carefully pull the outer shell of the unit away from the top half. Then place the inside of the unit facing up.

Step 3



- Using a Phillips #2 screwdriver, remove the two screws (circled in red) attaching the fan assembly to the unit.
- Carefully disconnect the fan connector from the socket, as depicted in the second picture.
- ⓘ The controller connector panel can be gently pulled out of the main unit and laid down, as depicted. This is not strictly required, but may provide more maneuverability inside the case.
- ⚠ Make sure to not pull out the wires while removing the fan. Doing so may damage the connector wire or the PCB.

Step 4



- Once the fan is removed, use compressed air to clean the dust off of the fan blades.
- ⓘ It is highly recommended that you use a toothpick to prevent the fan blades from moving while cleaning. This will prevent accidental damage to the fans motor.

To reassemble your device, follow these instructions in reverse order.