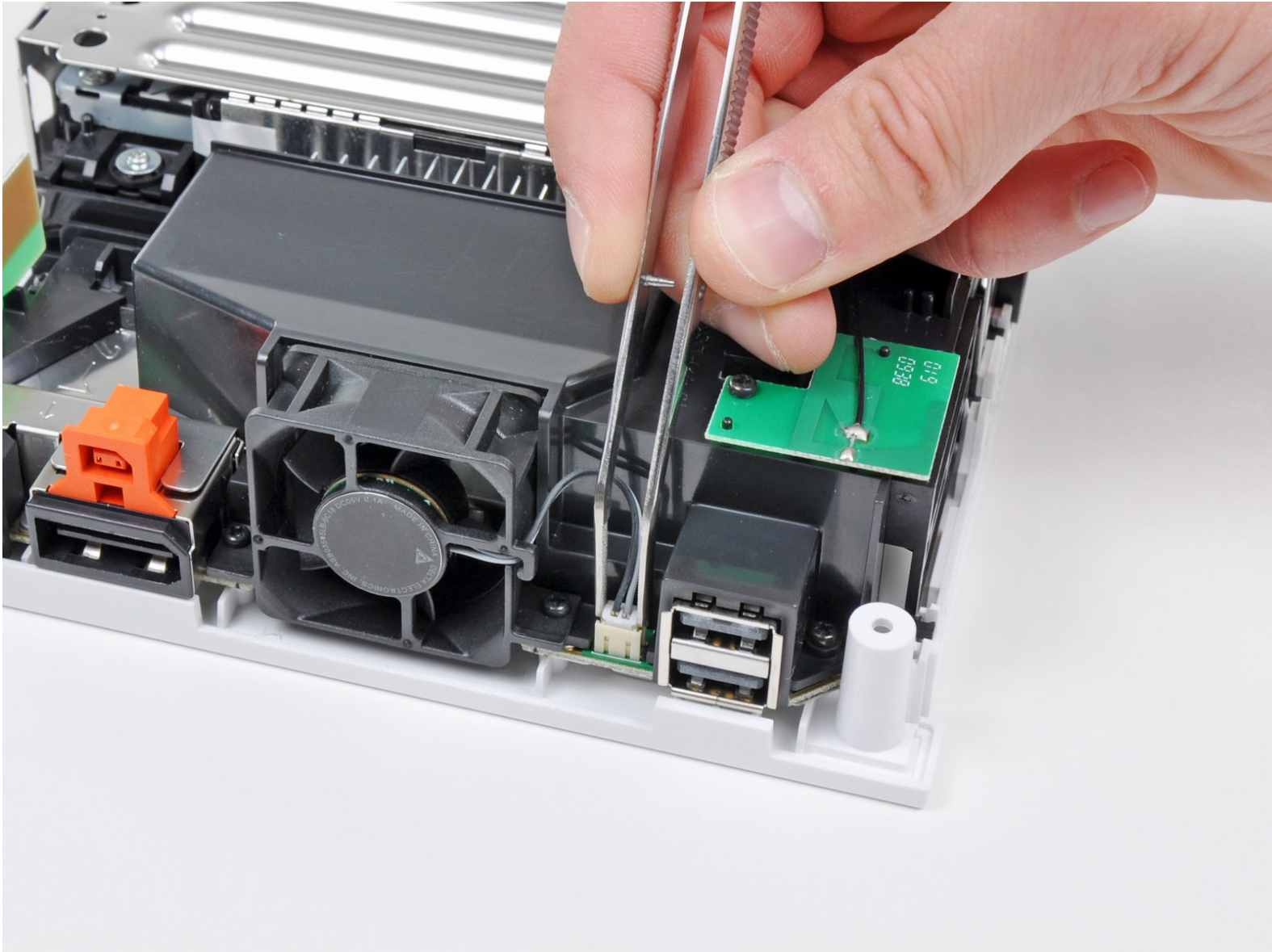




Nintendo Wii Fan Replacement

Written By: Dozuki System



INTRODUCTION

Use this guide to replace a worn-out fan.



TOOLS:

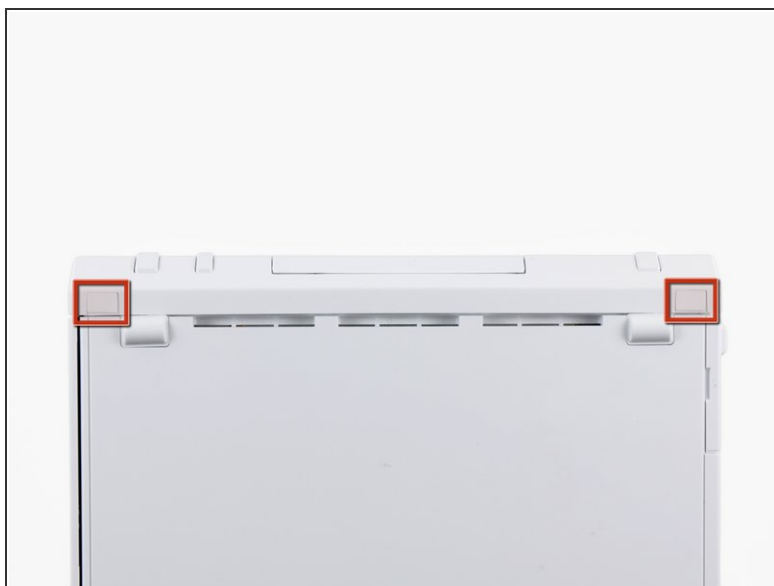
- [Metal Spudger](#) (1)
- [Phillips #00 Screwdriver](#) (1)
- [Tri-wing Screwdriver](#) (1)
- [Tweezers](#) (1)



PARTS:

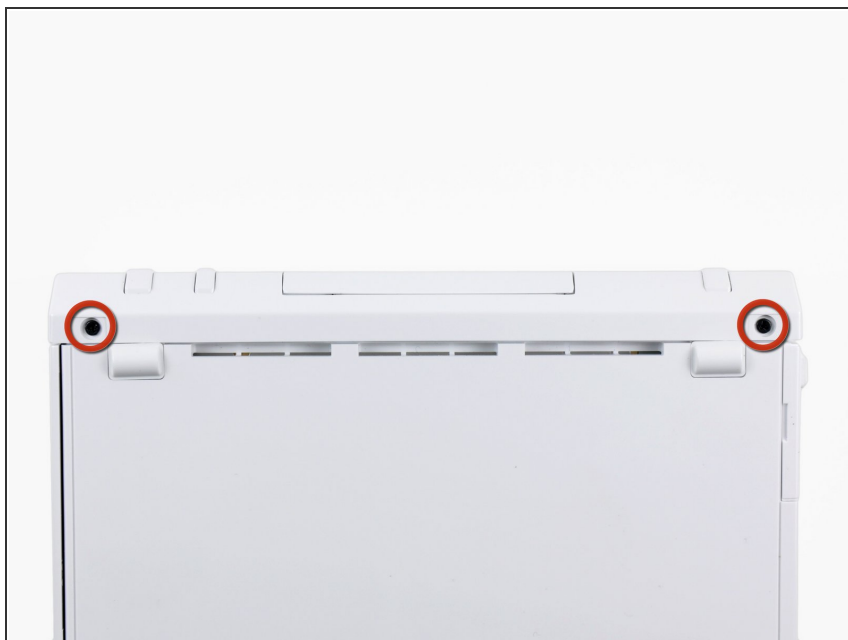
- [Nintendo Wii Fan](#) (1)

Step 1 — Nintendo Wii Fan Replacement



- Use a metal spudger to remove the white plastic screw covers stuck to the lower case near the front of the Wii.

Step 2



- Remove the two 8.3 mm Tri-Wing screws hidden under the covers you just removed.

Step 3



- Remove the single 5.9 mm Phillips screw under the controller port door nearest the faceplate.

Step 4



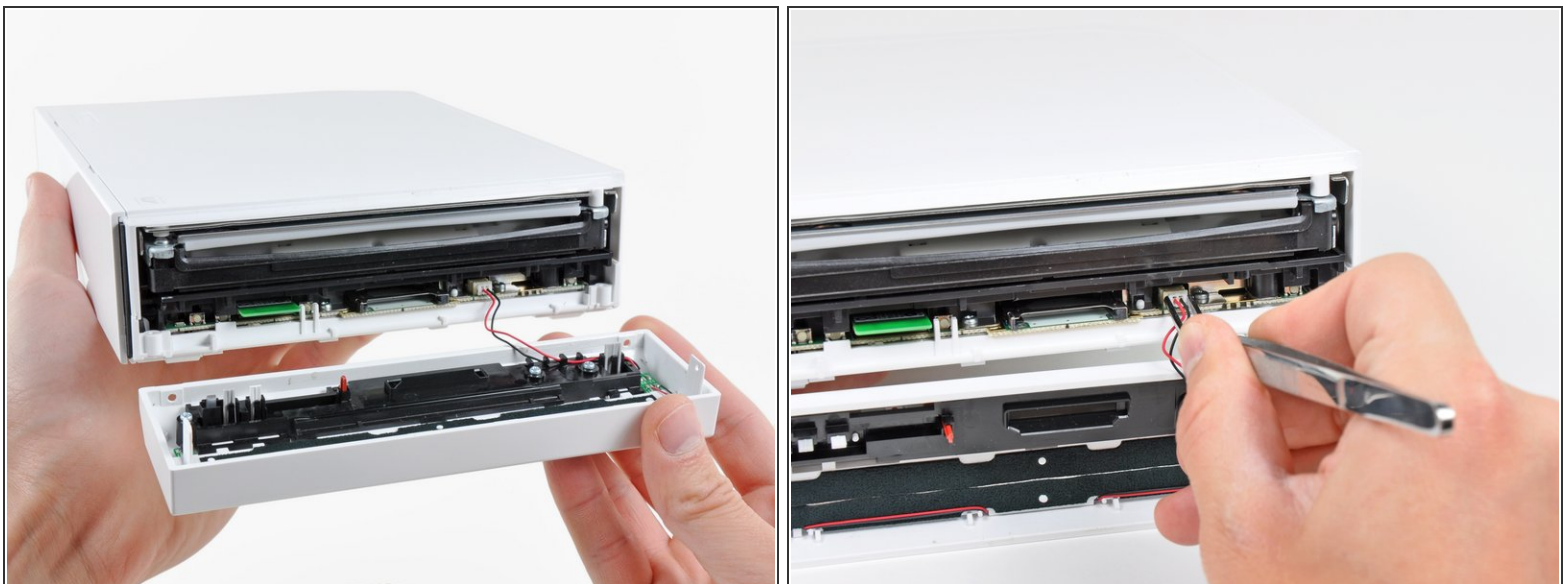
- Use a metal spudger to remove the rubber foot stuck to the side of the Wii near the DVD drive opening.

Step 5



- Remove the single 5.9 mm Phillips screw hidden under the foot you just removed.

Step 6



- Carefully pull the faceplate away from the front of the Wii.
- Use a pair of tweezers to disconnect the LED cable's plastic connector from the motherboard.
- Remove the faceplate.

Step 7



- Open the controller port cover until it is perpendicular to the black controller port bezel.
- Pull the controller port cover straight up to release it from the outer case.
- ❗ Repeat this procedure for the memory card port cover.

Step 8



- Remove the two remaining 4.1 mm Phillips screws along the top edge of the black plastic controller port bezel.
- Lift the bezel from the long edge furthest away from the controller ports and remove it from the Wii.

Step 9



- Remove the two 5 mm Phillips screws above the controller ports.

Step 10



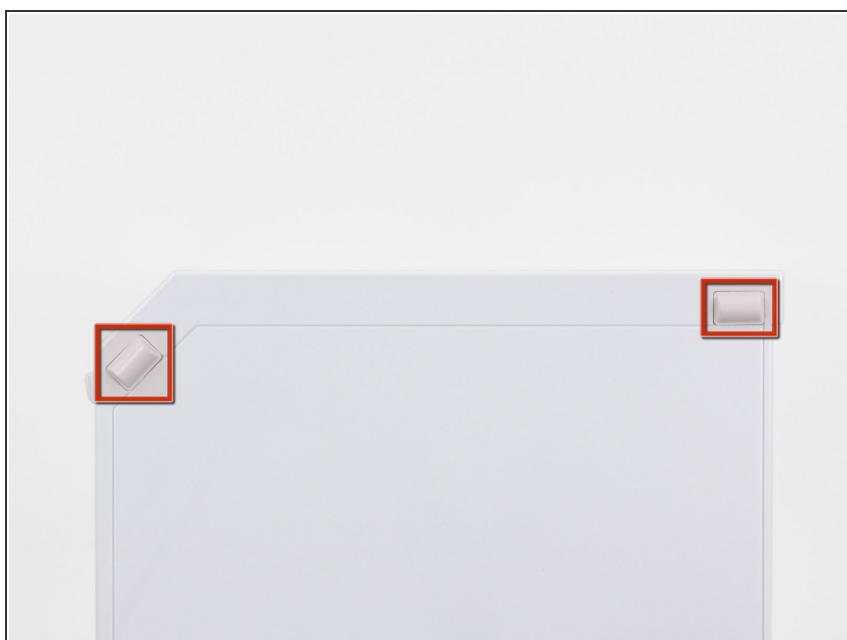
- Use a metal spudger to remove the three highlighted screw covers stuck to the side of the Wii.

Step 11



- Remove the following screws:
 - Two 5 mm Phillips screws
 - One 8.2 mm Tri-Wing screw

Step 12



- Use a metal spudger to remove the two rubber feet stuck to the bottom face of the Wii near the rear ports.

Step 13



- Remove the two 8.2 mm Tri-Wing screws hidden under the feet you just removed.

Step 14



- Lift the outer case straight up off the body of the Wii.

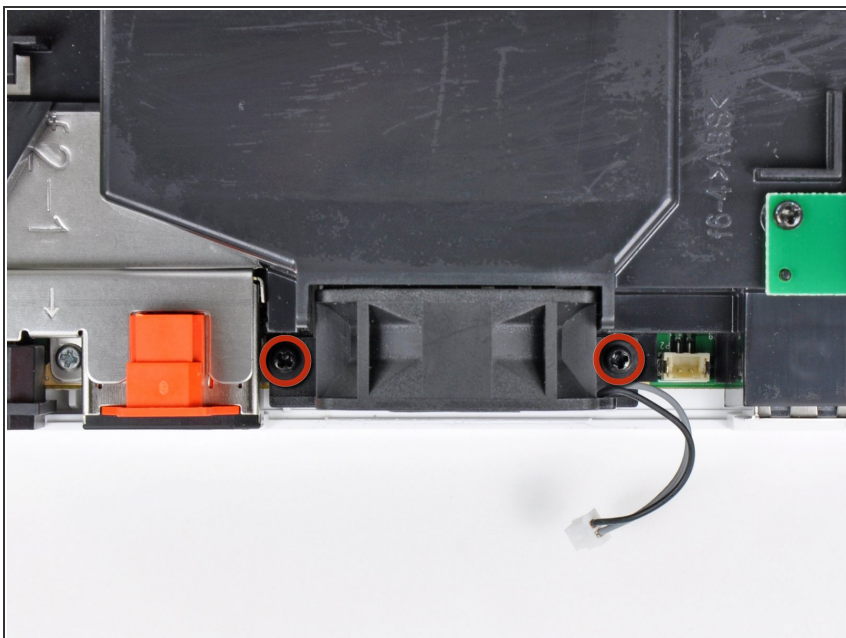
Step 15



- Grab the fan connector with a pair of tweezers and lift it straight up and out of its socket on the motherboard.

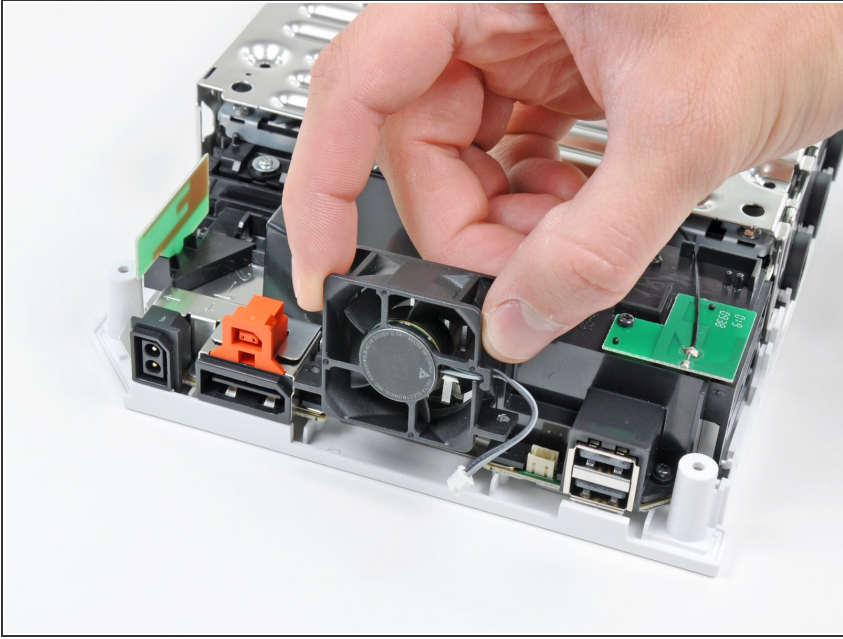
⚠ Be sure your tweezers are clamped down on the fan connector, **not** the socket attached to the motherboard.

Step 16



- Remove the two 10 mm Phillips screws securing the fan to the fan shroud.

Step 17



- Remove the fan from the Wii.

To reassemble your device, follow these instructions in reverse order.