



# Sony Vaio PCG-7A2L Hard Drive Replacement

Written By: Dozuki System



---

## INTRODUCTION

This guide will show you how to replace the Hard Drive on your Sony Vaio PCG-7A2L.



### TOOLS:

- [Phillips #00 Screwdriver](#) (1)
-

## Step 1 — Sony Vaio PCG-7A2L Hard Drive Replacement



- Lay the closed laptop on its screen so the bottom is facing towards you.

## Step 2



- Push both latches towards the center of the battery.

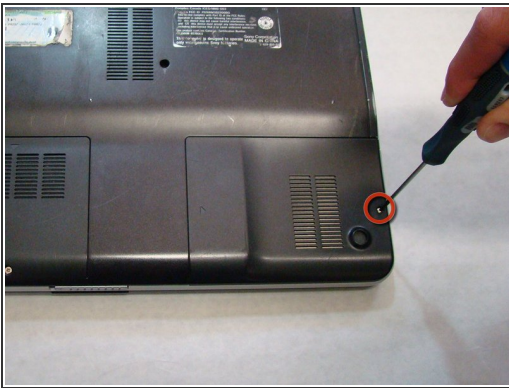


### Step 3



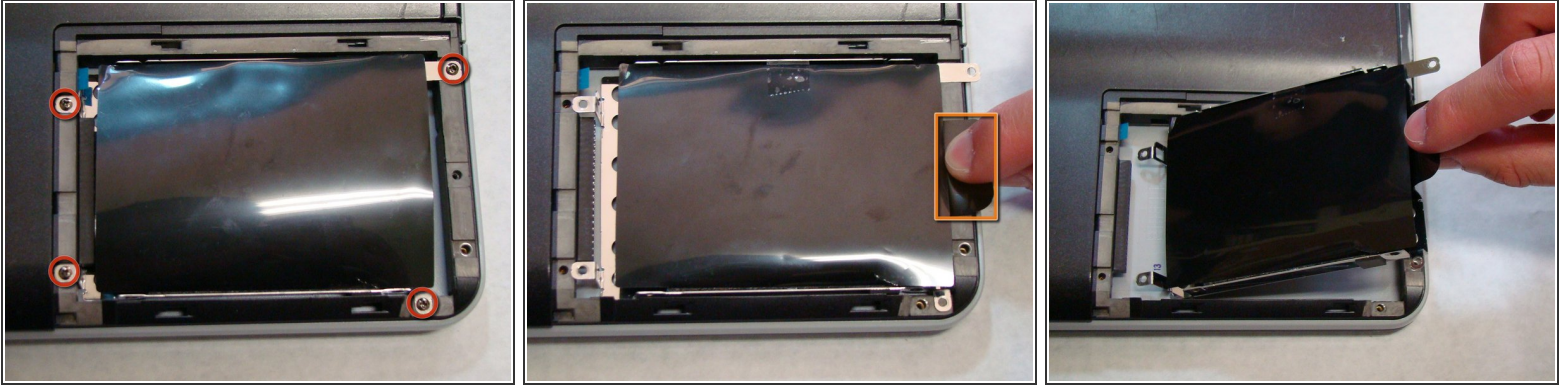
- Remove the battery by pushing it away from the laptop.

### Step 4



- Locate and remove the screw (Length: 7.7mm) for the hard drive cover.
- Slide the cover until it is free from the laptop case.
- Lift the cover to remove.

## Step 5



- Locate and remove the four screws (Length: 7.7mm) holding the Hard Drive tray in place.
- Using the tab on the tray, slide the Hard Drive away from the main body of the laptop.
- The Hard Drive should now be disconnected.
- Lift the drive out with the tab on the tray.

To reassemble your device, follow these instructions in reverse order.