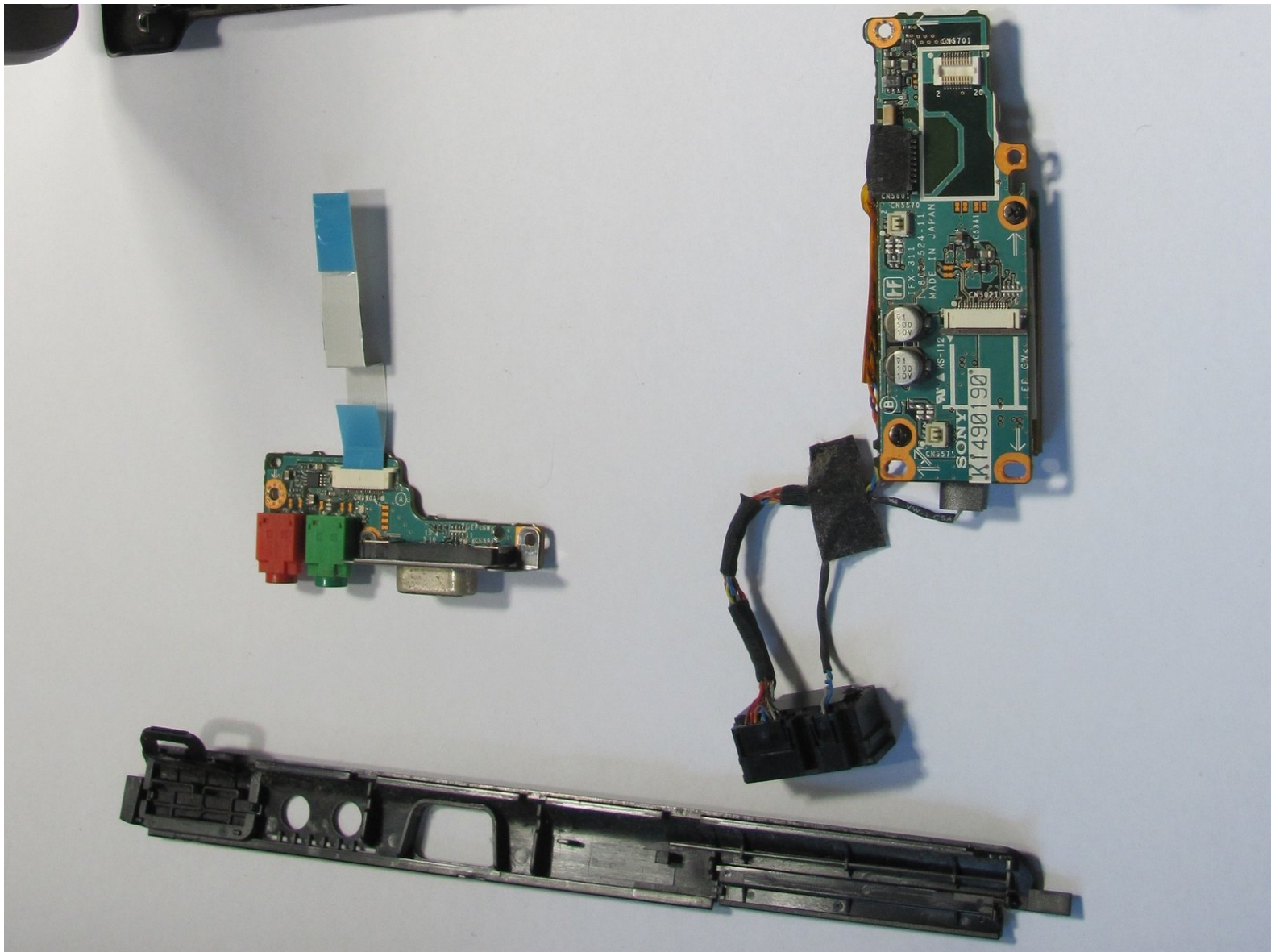




# Sony Vaio VGN-S260 Ethernet Ports Replacement

Written By: Dozuki System



---

## INTRODUCTION

How to remove the Ethernet port from the Sony Vaio VGN-S260 laptop

---



### TOOLS:

- [Phillips #00 Screwdriver](#) (1)
-

## Step 1 — Sony Vaio VGN-S260 Ethernet Ports Replacement



- Flip the laptop over so the Vaio logo is facing down
- Locate the battery at the top and Find the release and unlock slides on the battery
- Slide the unlock tab to the unlock position
- Slide the release tab in the direction of the arrow, i.e. towards the unlock tab

## Step 2



- With the tabs still in the unlock position, slide the battery away from the main case.



## Step 3



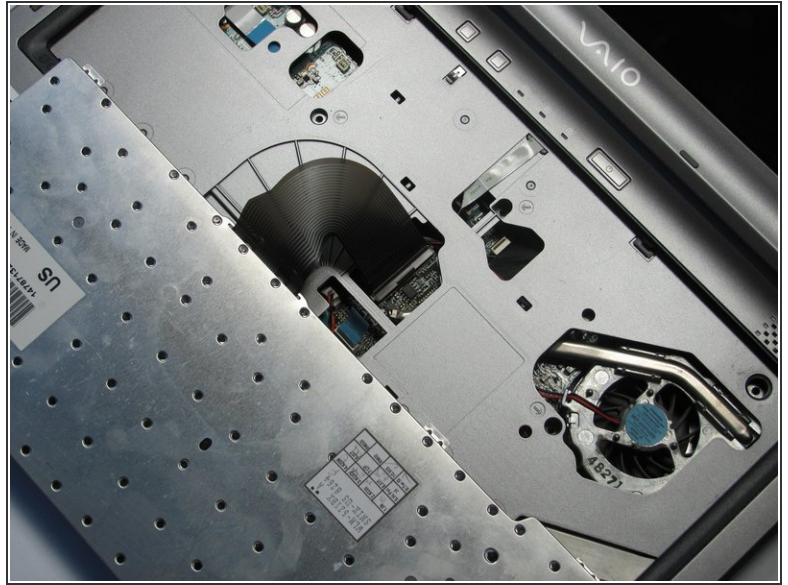
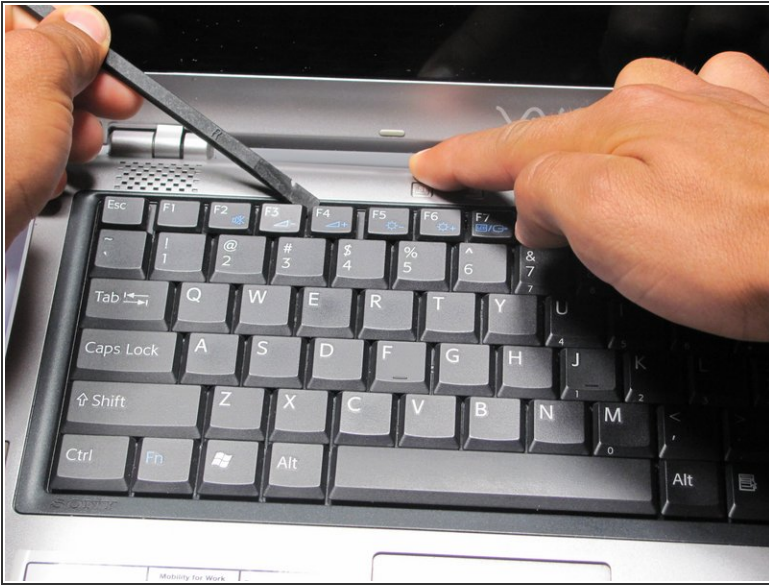
- Flip the computer over so the Vaio logo is facedown
- Unscrew the 2 screws next to the battery

## Step 4



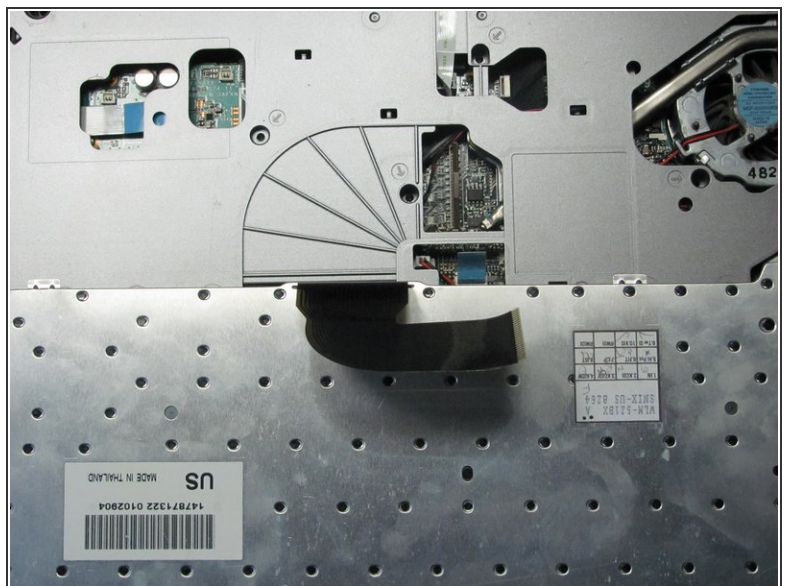
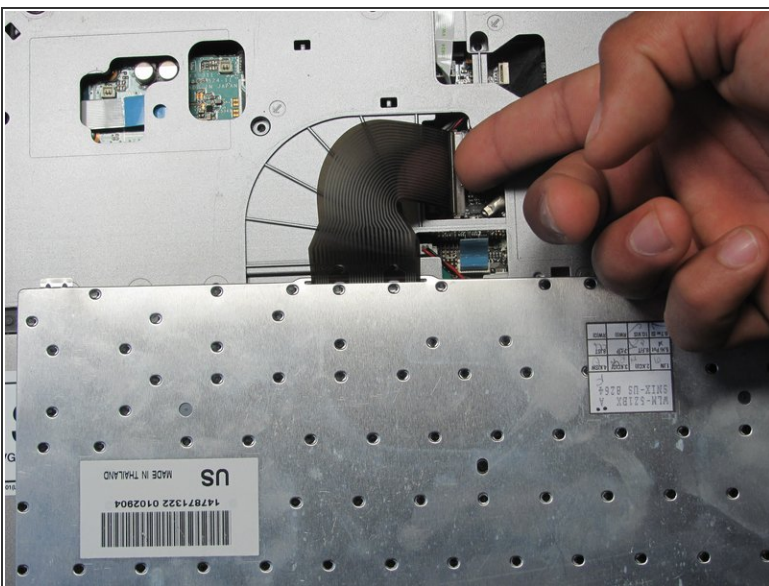
- Flip the computer over again so the Vaio logo is face up
- Open the lid

## Step 5



- Press down on the outer gray shell around the keyboard
  - Use the spudger to gently lift keyboard
- ⚠ Do not pull up the keyboard too far as it is attached to a ribbon underneath

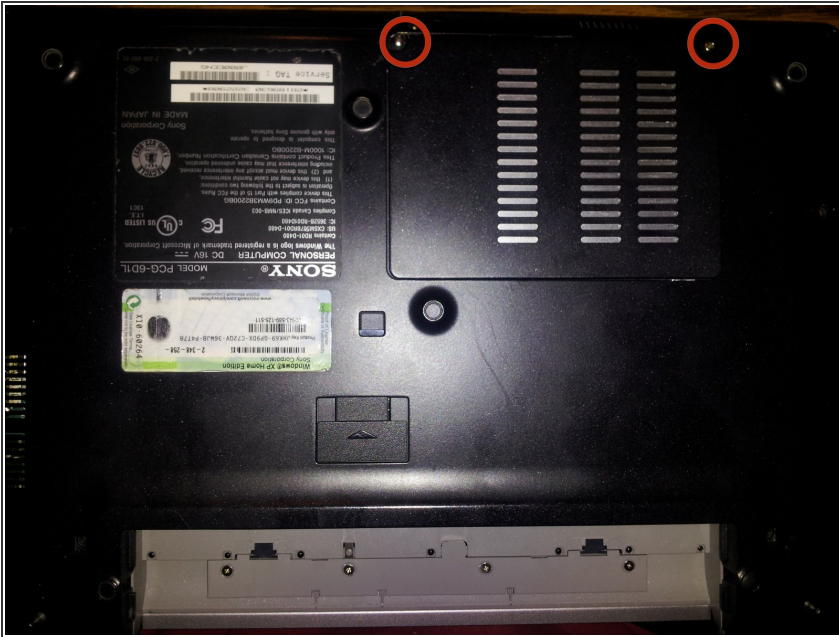
## Step 6



- Lift up lever underneath the ribbon to detach the keyboard.



## Step 7



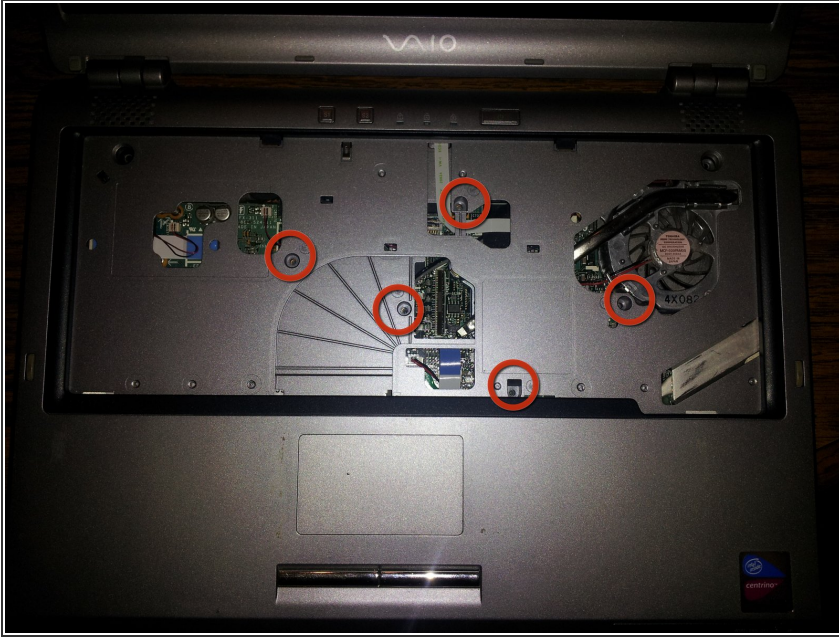
- Remove memory/wireless compartment cover

## Step 8



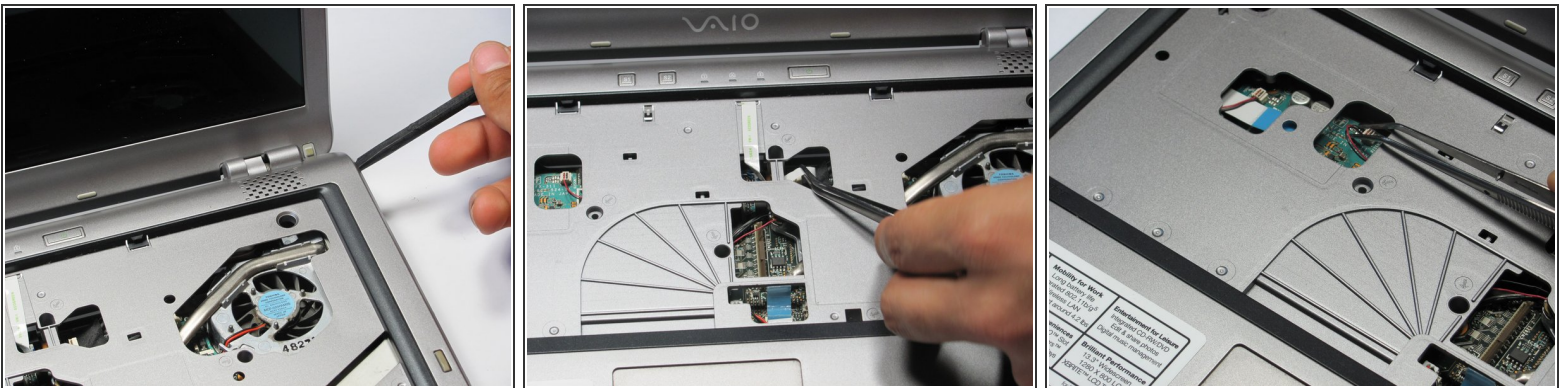
- Flip so the Vaio Logo is face down
- Locate and remove a total of 8 screws on the bottom.

## Step 9



- Find and remove 5 screws (they all have arrows next to them) from cover

## Step 10



- Flip the laptop over so the Vaio logo is face up
- Use the spudger to pop up the upper casing
- ⚠ Do not lift too much as the Uppercasing is attached to wires underneath
- Remove the wires that are attaching the uppcasing to the motherboard

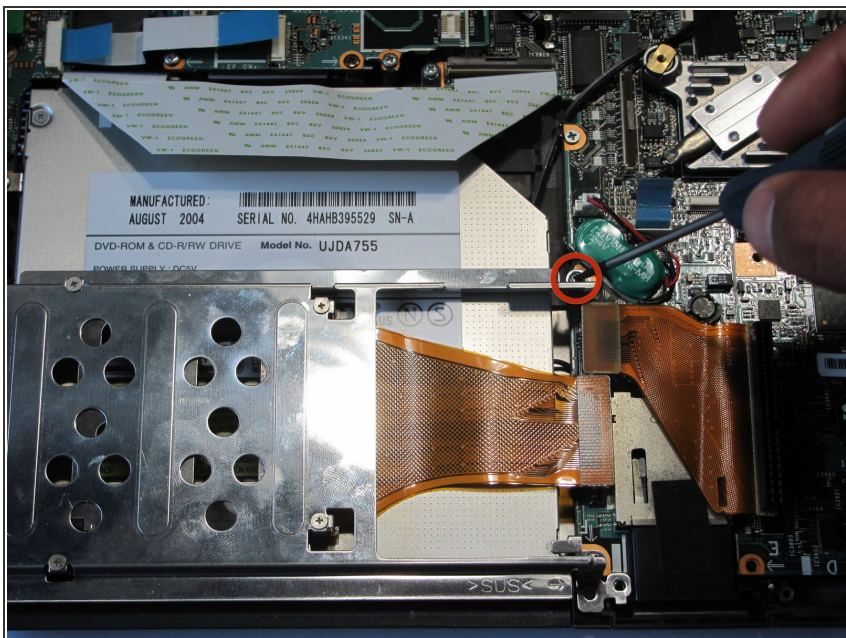


## Step 11



- Remove the uppercasing

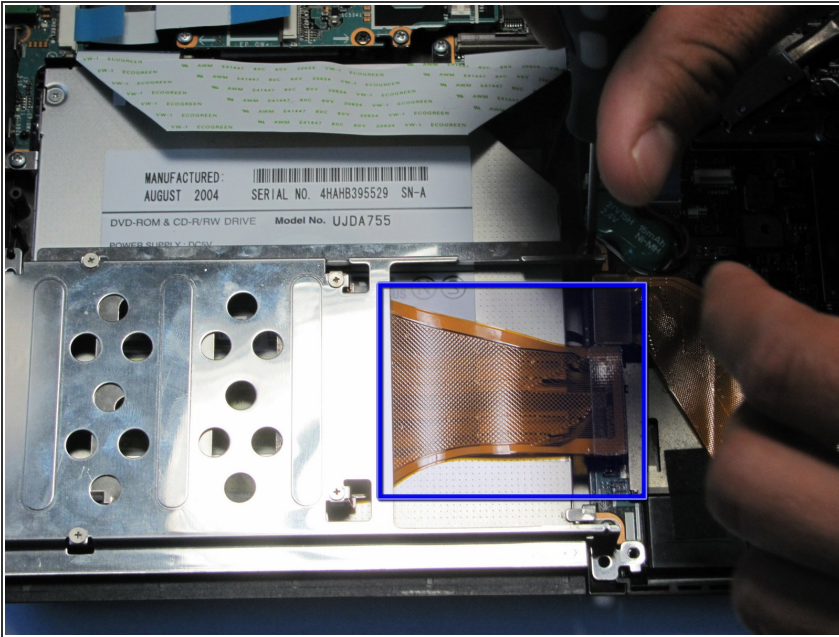
## Step 12



- Locate the screw holding the optical drive casing to the logic board
- Remove this screw

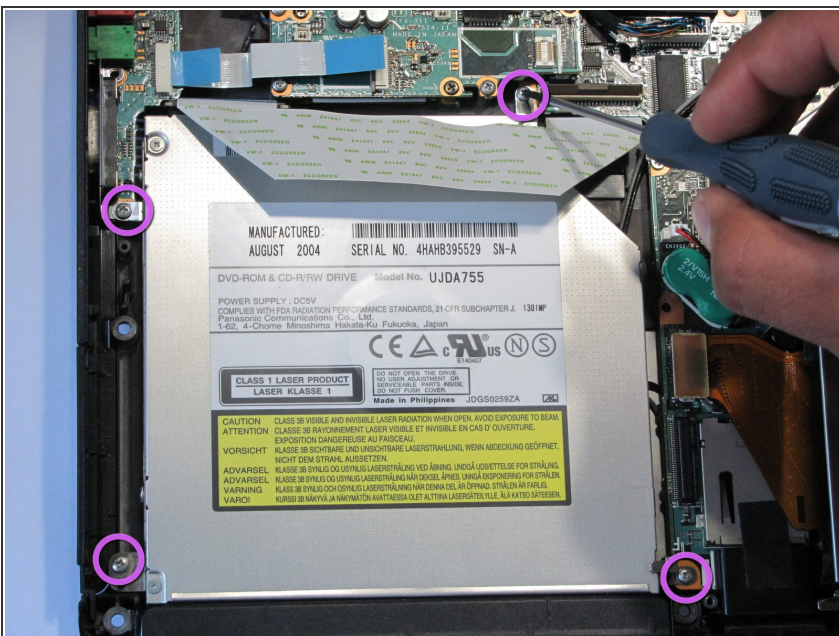


## Step 13



- Locate ribbon connecting optical drive case to logic board.
- Pop off the ribbon
- Remove the metal PC-Card cage

## Step 14



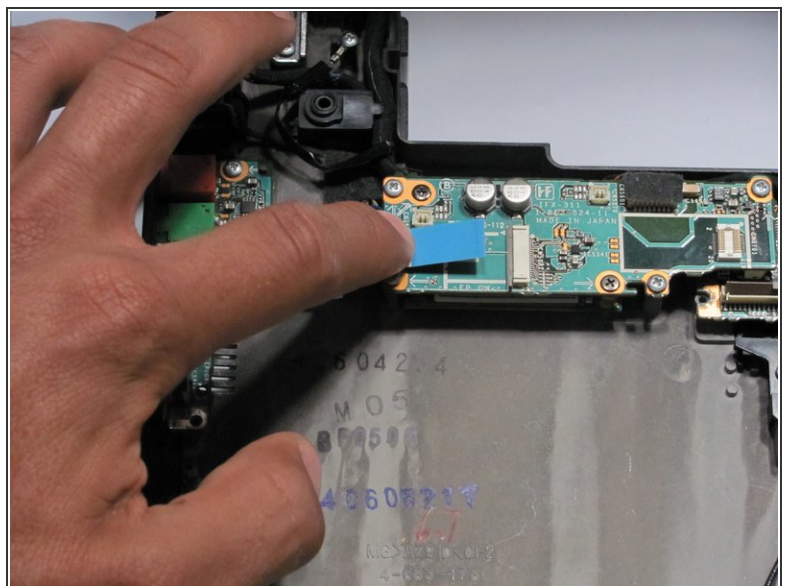
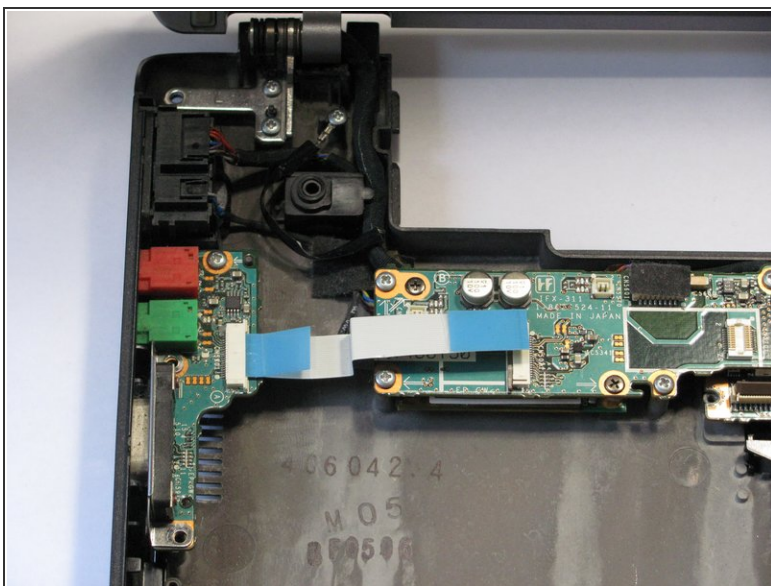
- Locate the four screws holding the optical drive to the logic board
- Remove the screws

## Step 15



- Locate brown locking tab above optical drive.
- Lift up on brown locking tab until ribbon is loose
- Gently slide out and remove the optical drive from the computer

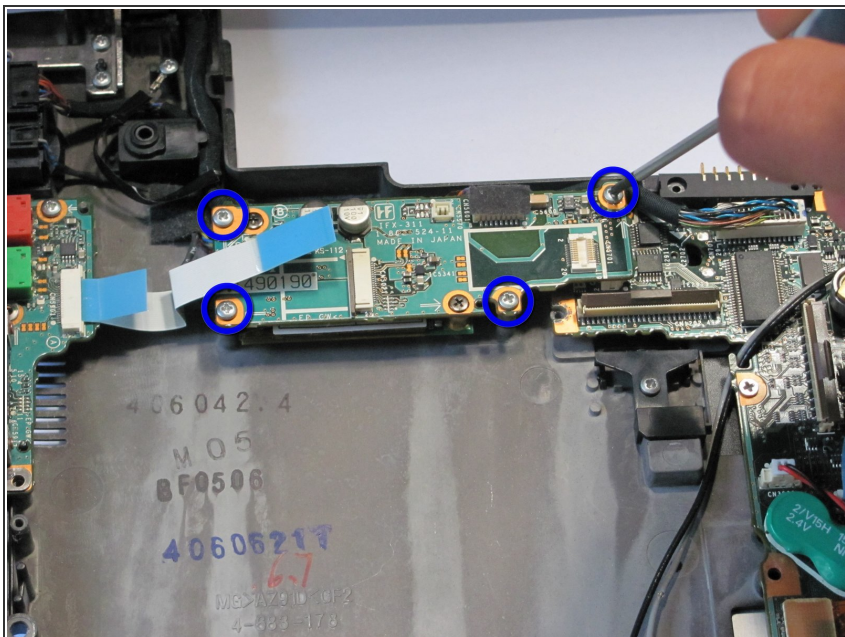
## Step 16



- Remove the blue ribbon from the Ethernet Circuit Board

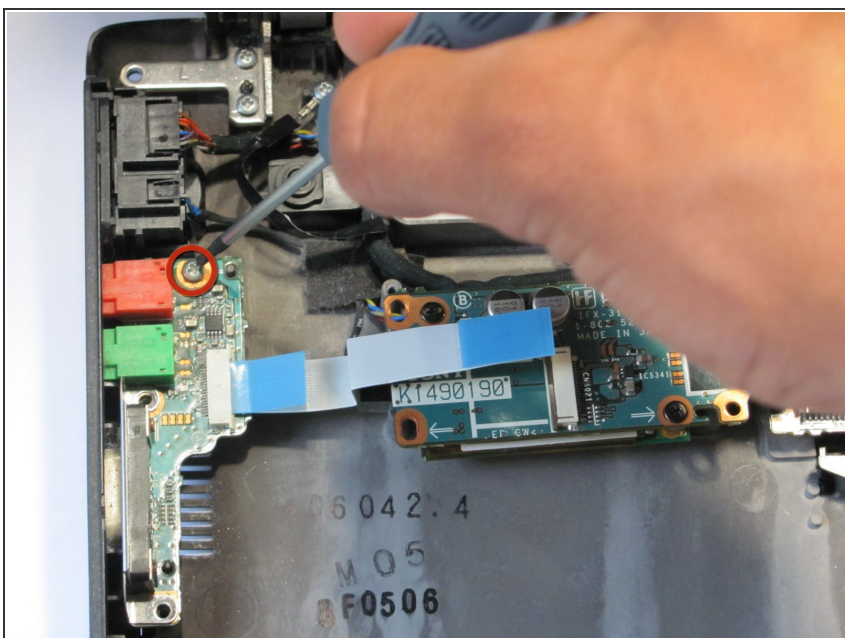


## Step 17



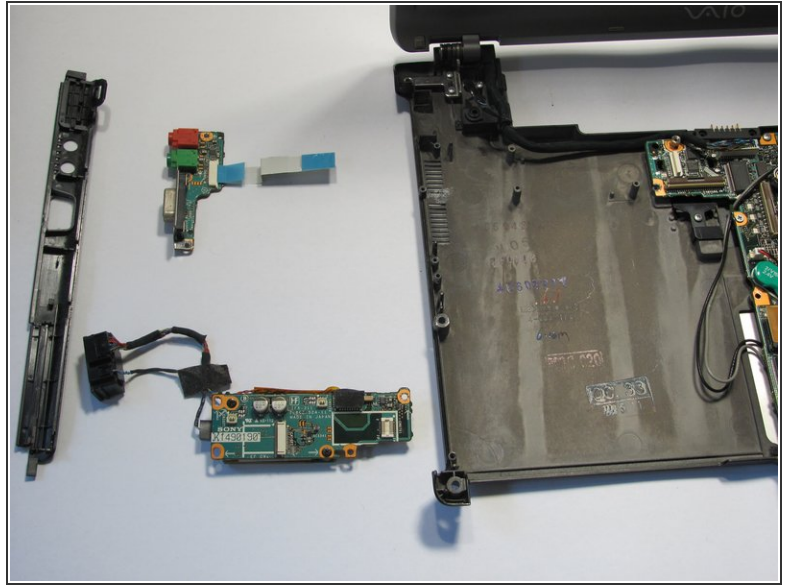
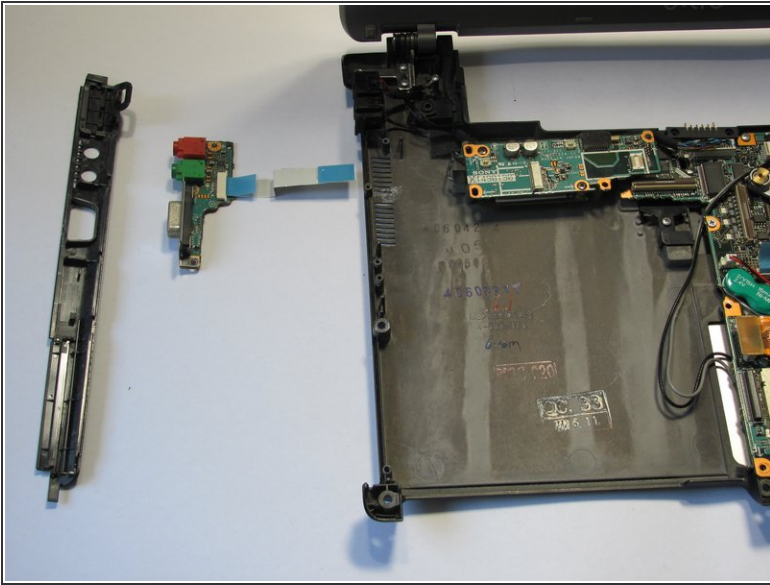
- Locate the screws near the Ethernet Port circuit board
- Remove the screws.

## Step 18



- Locate the screws for the second ethernet circuit board
- Remove the screws

## Step 19



- Remove the ethernet ports

To reassemble your device, follow these instructions in reverse order.