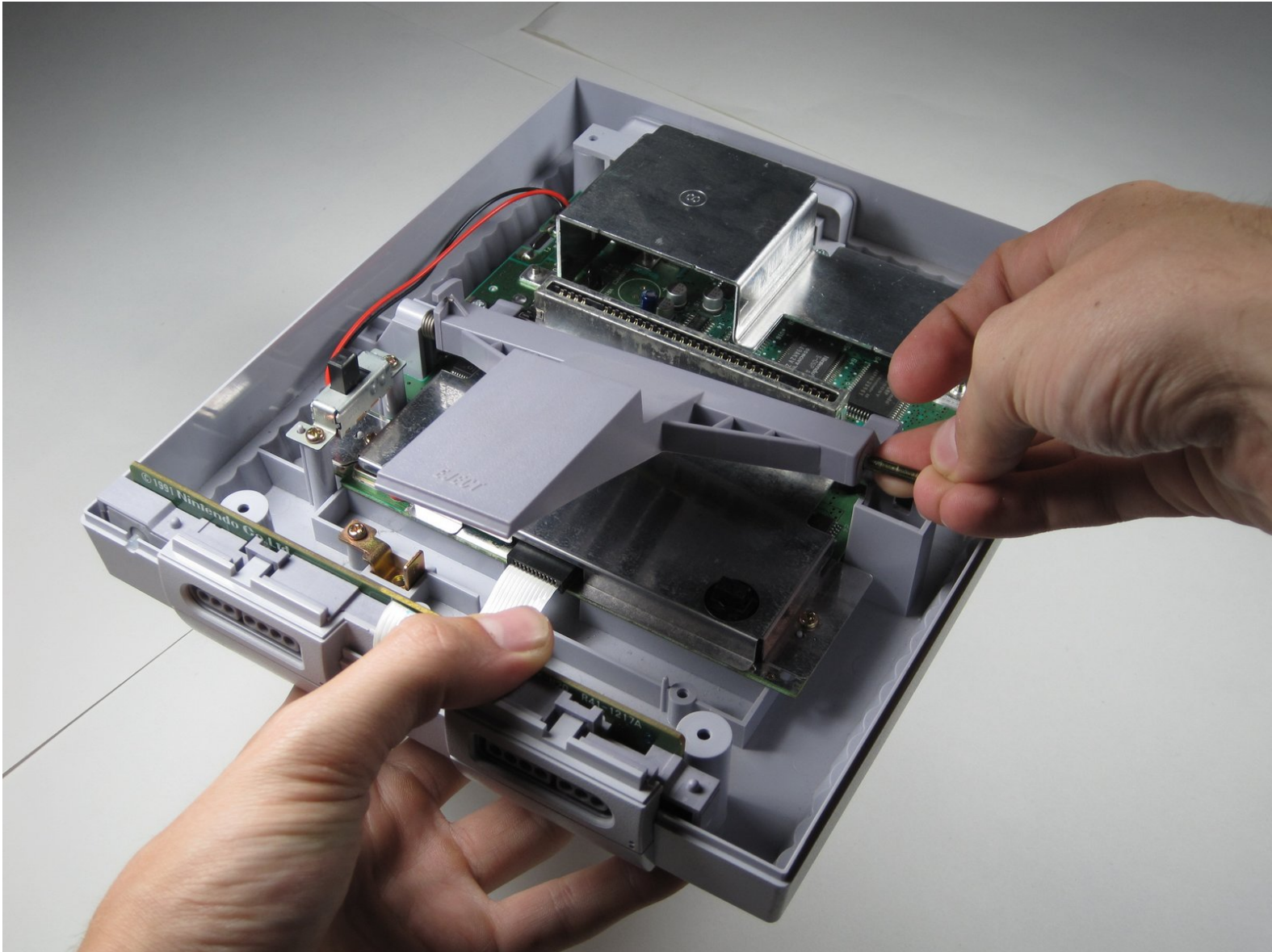




Super Nintendo Eject Button Replacement

Written By: Dozuki System



INTRODUCTION

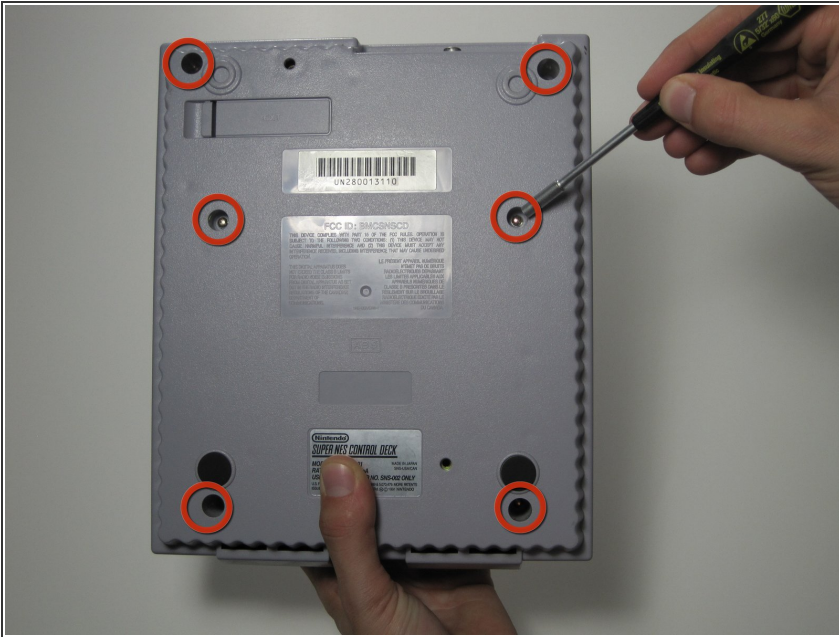
For this procedure you will have to first remove the upper case using the Gamebit. Afterwards you will need to remove the metal bar attaching the eject button to the system. Be careful not to loose the spring when you remove the bar. These steps will only require the Gamebit.



TOOLS:

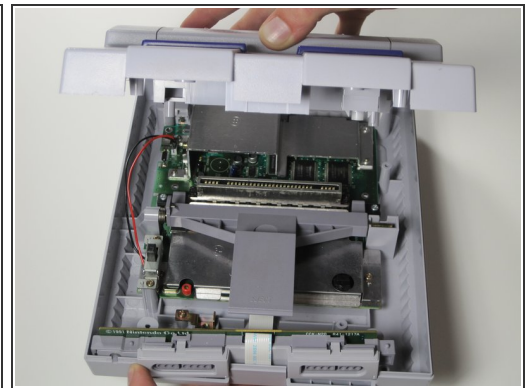
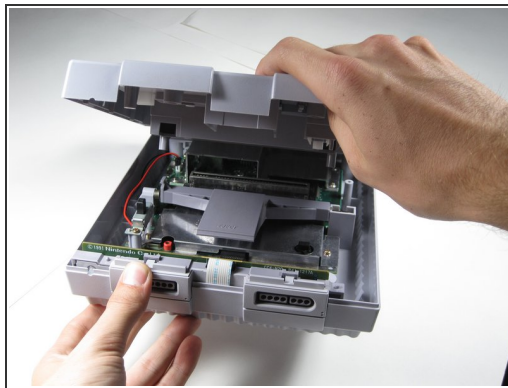
- [Gamebit 4.5mm](#) (1)
-

Step 1 — Super Nintendo Eject Button Replacement



- Remove the six screws located on the underside of the system using the Gamebit 4.5mm screwdriver.

Step 2



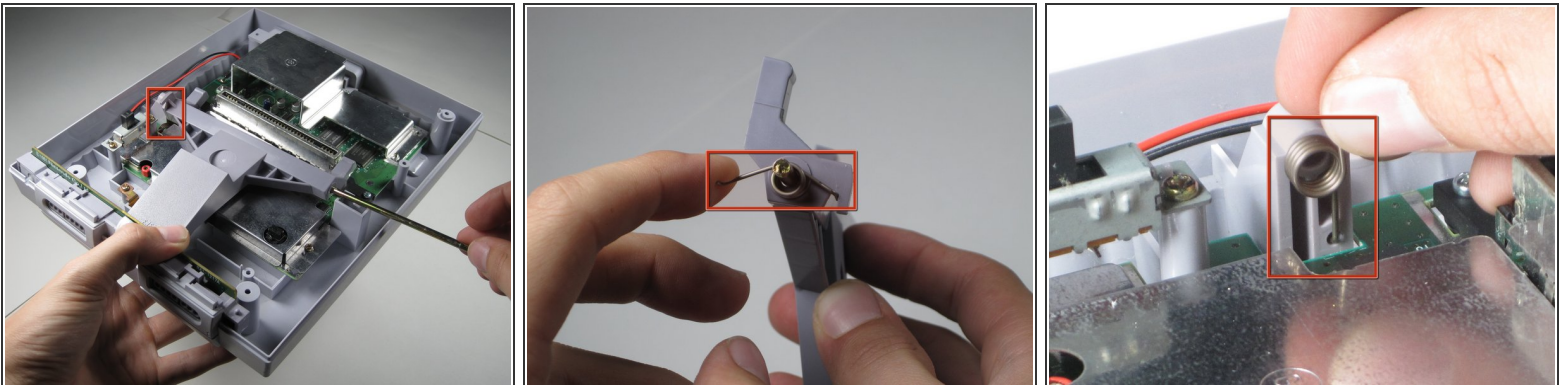
- Carefully flip the unit back over.
- Locate the seam. Lift and separate the upper half of the case from the lower half of the case.

Step 3



- Lift the right side of the eject lever out of the housing.

Step 4



- Pull the metal bar out through the right side of the eject lever.

⚠ Make sure to keep track of the spring located on the left side of the lever as it may shoot off when removing the metal bar.

i When reassembling, the procedure becomes more difficult due to the spring (marked red). We recommend that one person hold the spring in place (picture 3) while another person slides the metal bar back into the left housing, and slide the eject lever onto the metal bar.

To reassemble your device, follow the instructions in reverse order.