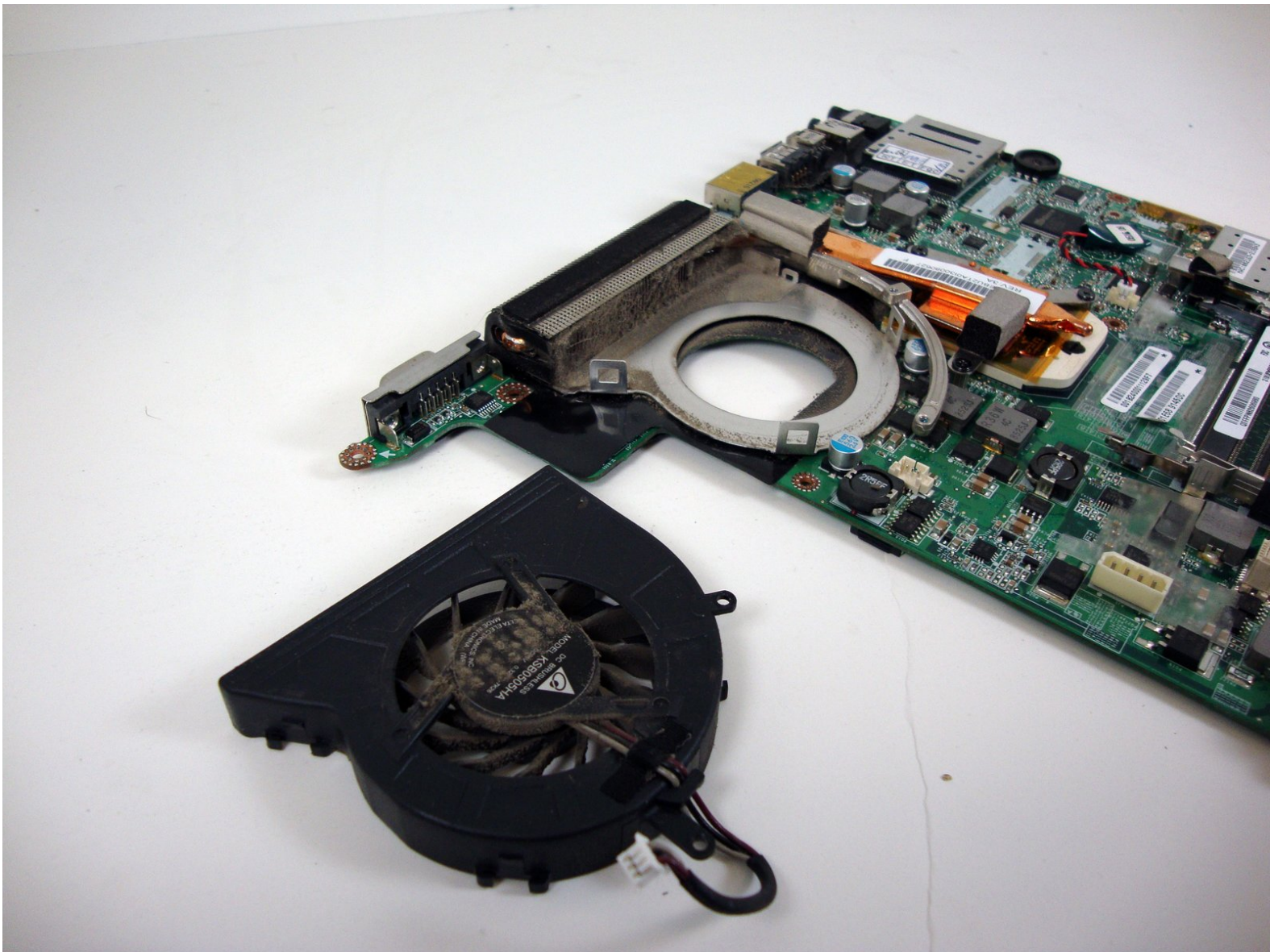




Toshiba Satellite M305D-S4829 Fan Replacement

Written By: Dozuki System





TOOLS:

- [Phillips #0 Screwdriver](#) (1)
- [Plastic Opening Tools](#) (1)
- [Tweezers](#) (1)

Step 1 — Toshiba Satellite M305D-S4829 Fan Replacement



- Unlatch the battery by pushing outward on both latches.

Step 2



- Slide battery out.

Step 3



- Remove the five "F2" screws with a Phillips #0 screwdriver.

Step 4



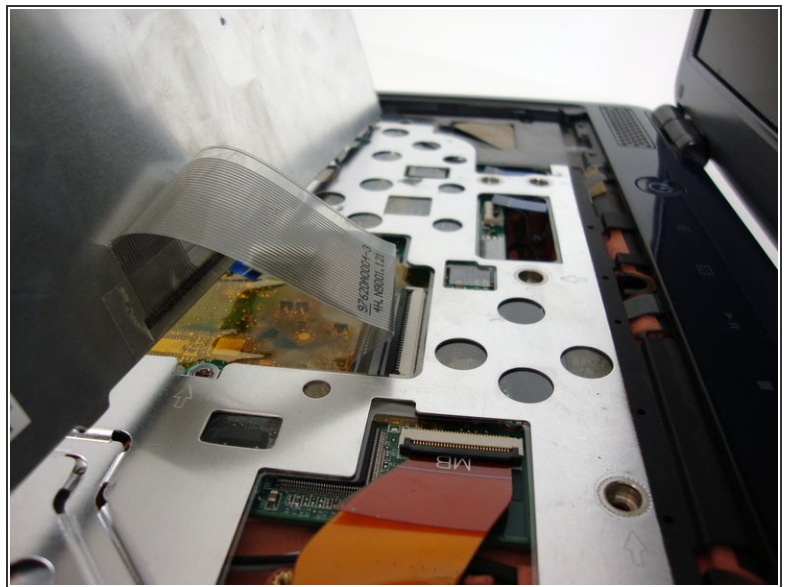
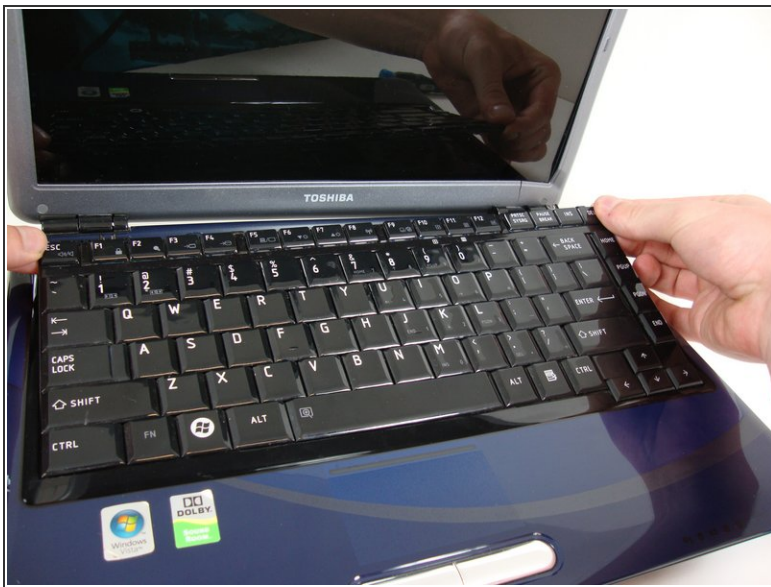
- Insert the plastic opening tool above the F1 key.
- Apply upward pressure until the black plastic strip snaps off. The entire strip will easily come off from left to right.

Step 5



- Find the screws above the F1 and INS keys.
- Unscrew both screws with a Phillips #0 screwdriver.

Step 6



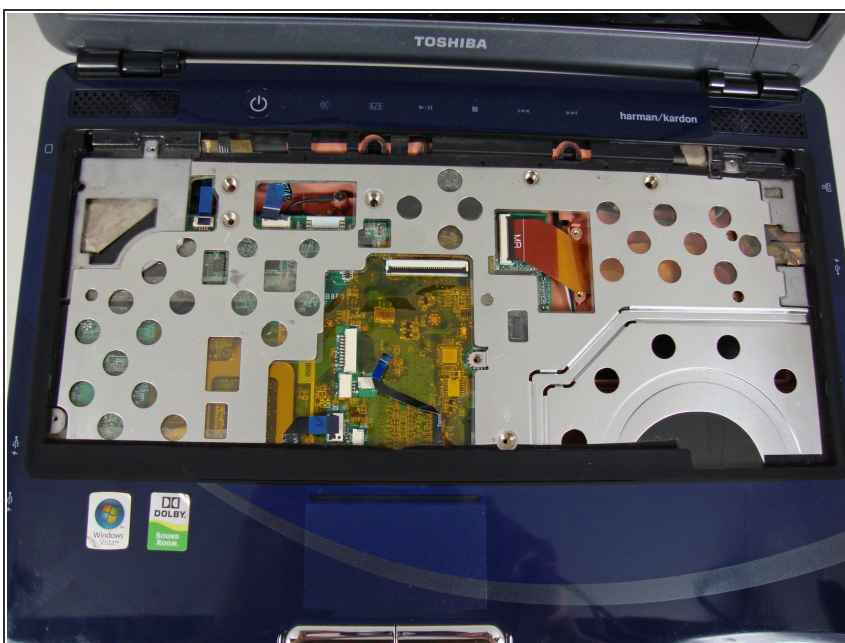
- Slowly lift the top edge of the keyboard out with your fingers.
- The ribbon cable located on the back of the keyboard will become accessible.

Step 7



- Locate the black ribbon cable flap.
- Detach flap with plastic opening tool. The ribbon cable will become free.

Step 8



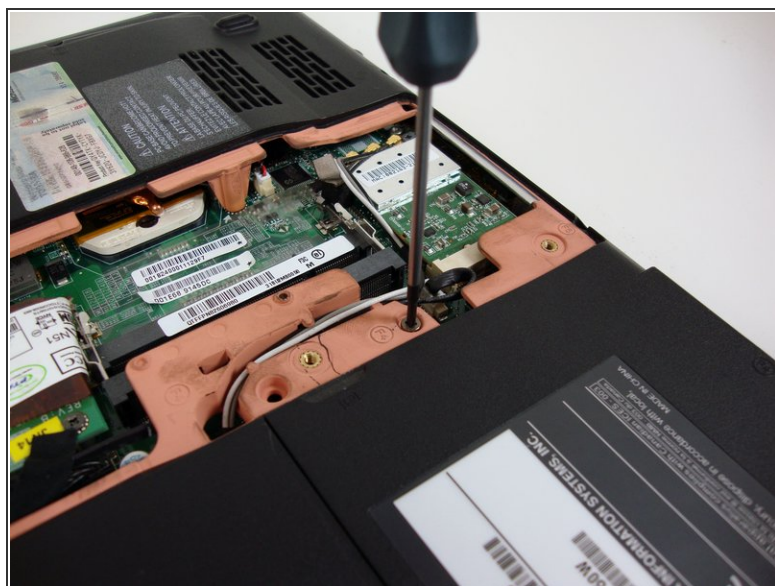
- Your keyboard has now been successfully removed.

Step 9



- Remove the back panel by removing the three labeled screws with a Phillips #0 screwdriver.

Step 10



- Locate and remove the circled screw with a Phillips #0 screwdriver.

Step 11



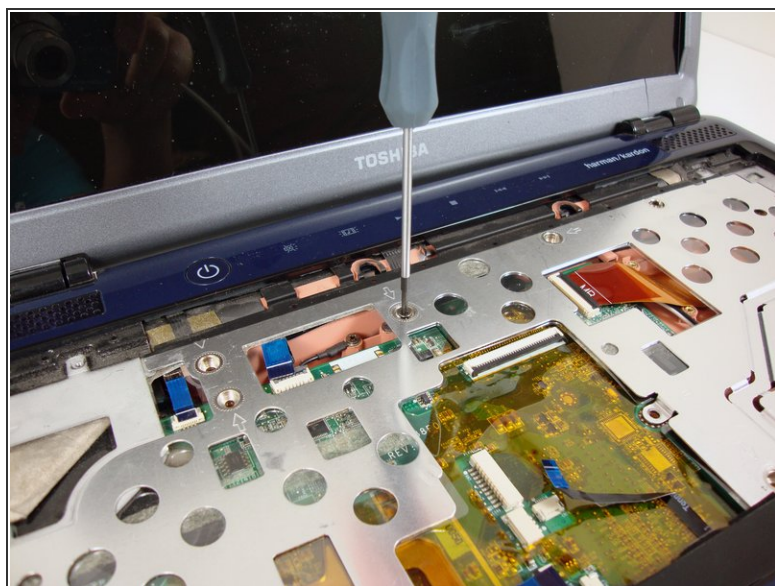
- Use the plastic opening tool to pry the CD/DVD drive out of the frame.

Step 12



- Gently remove the CD/DVD drive from the laptop body.

Step 13



- Remove the circled screws with Phillips #0 screwdriver.

Step 14



- Remove these screws from the underside of the laptop with Phillips #0 screwdriver.

Step 15



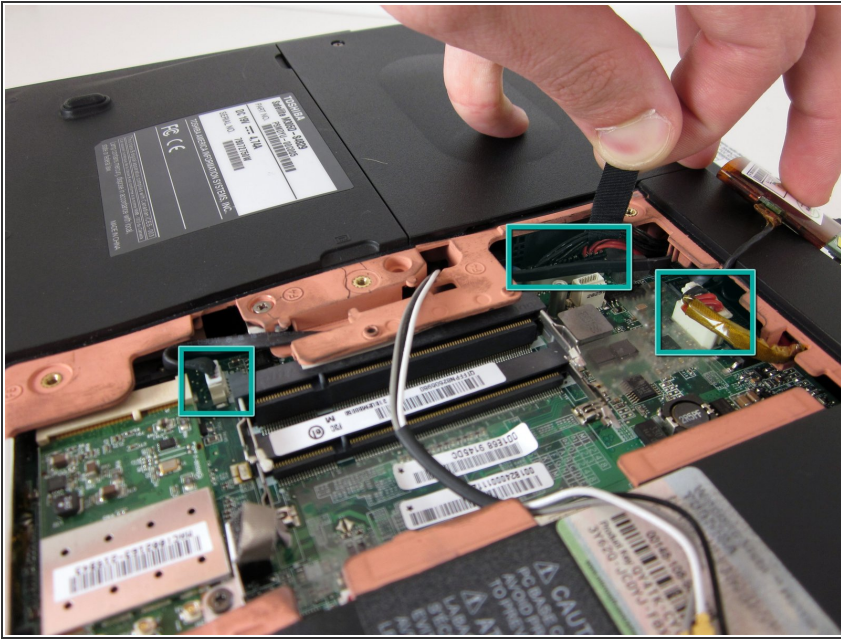
- Disconnect the three circled antennas by lightly pulling upward with your fingers. They should detach easily.
- Note: Yours may only have two (2) antennas. Pay attention to the Orientation of the Aluminum bracket with the pads for reinstallation.

Step 16



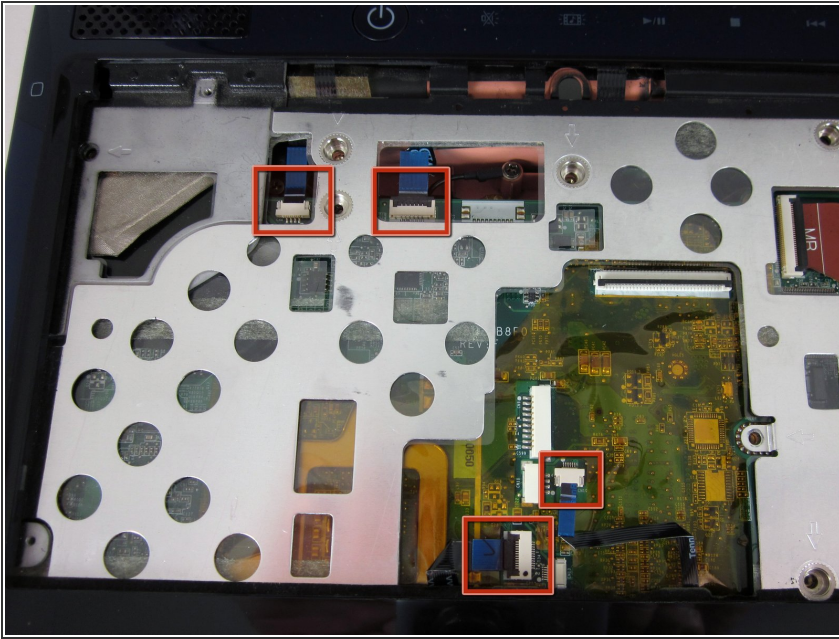
- Remove the circled screw with a Phillips #0 screwdriver.

Step 17



- Detach the 3 marked cables by pulling them out with your fingers as shown.
- ⓘ This may require some force. They do not come out easily.

Step 18



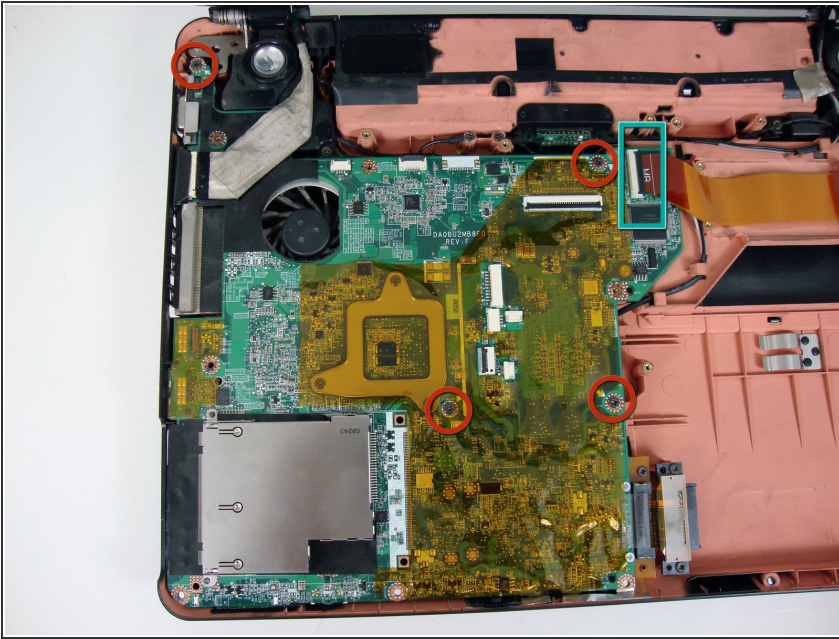
- Detach the four blue ribbon cables carefully with tweezers. Some of the ribbons may require a flap to be raised because it secures the ribbon in.

Step 19



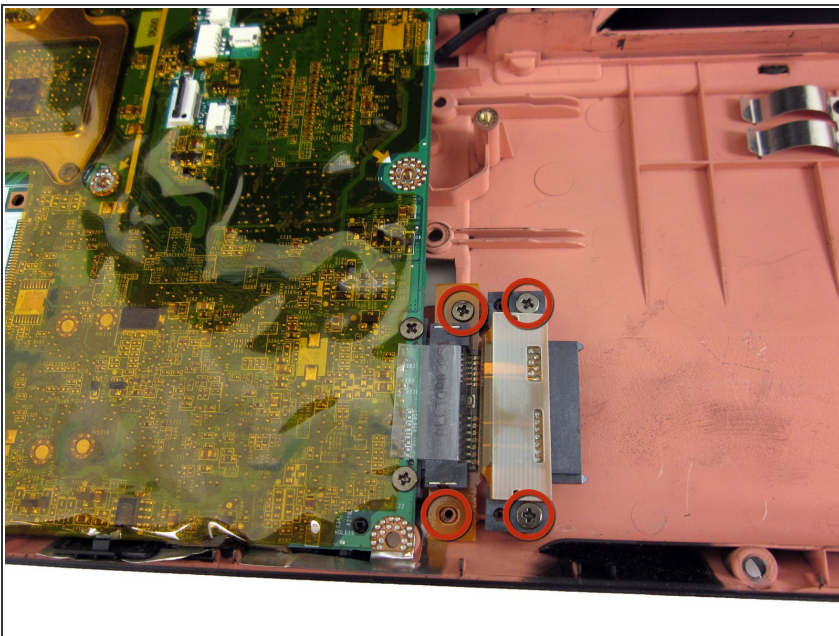
- Remove the top plastic cover by lifting upward from the bottom left-hand corner as shown. The cover will come off easily.

Step 20



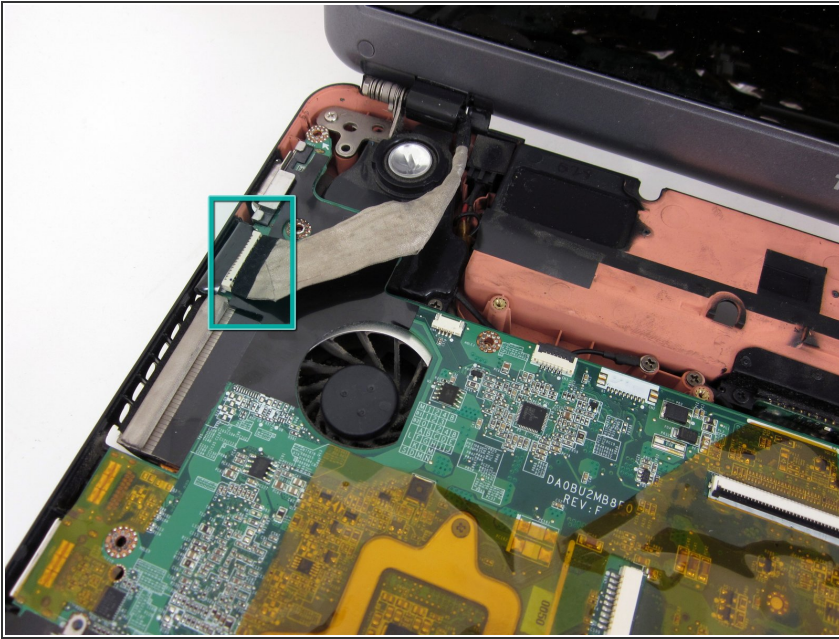
- Remove the circled motherboard screws with a Phillips #0 Screwdriver.
- Disconnect this ribbon cable.

Step 21



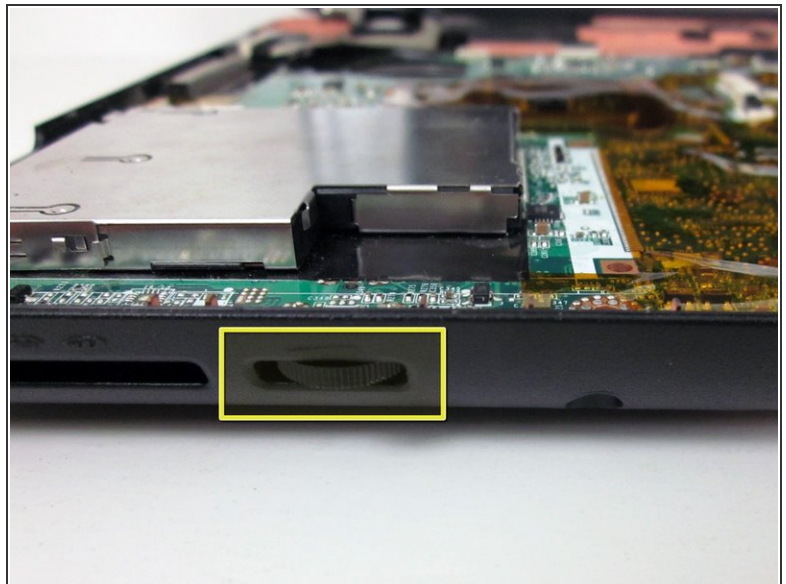
- Remove these screws with a Phillips #0 screwdriver.

Step 22



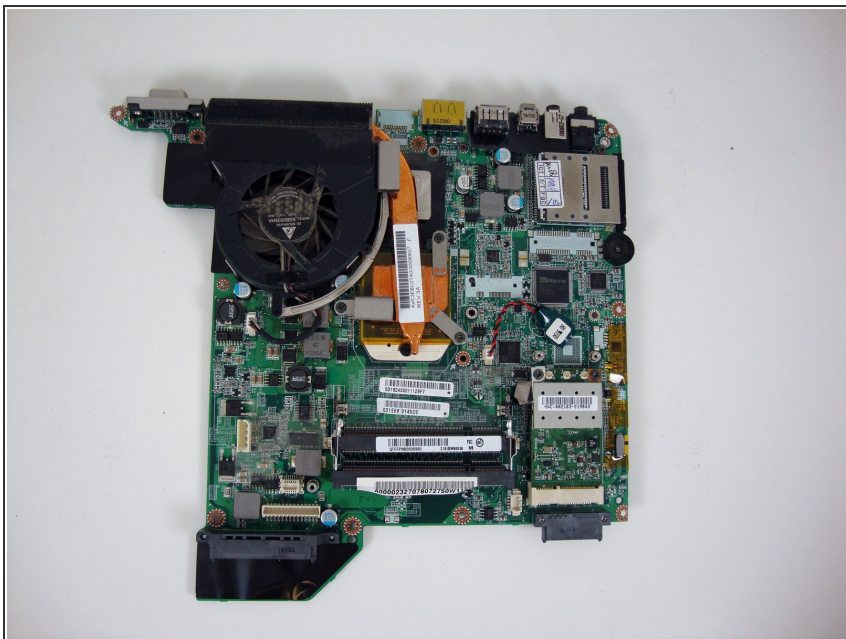
- Detach the display cable by gently pulling it out with your fingers.

Step 23



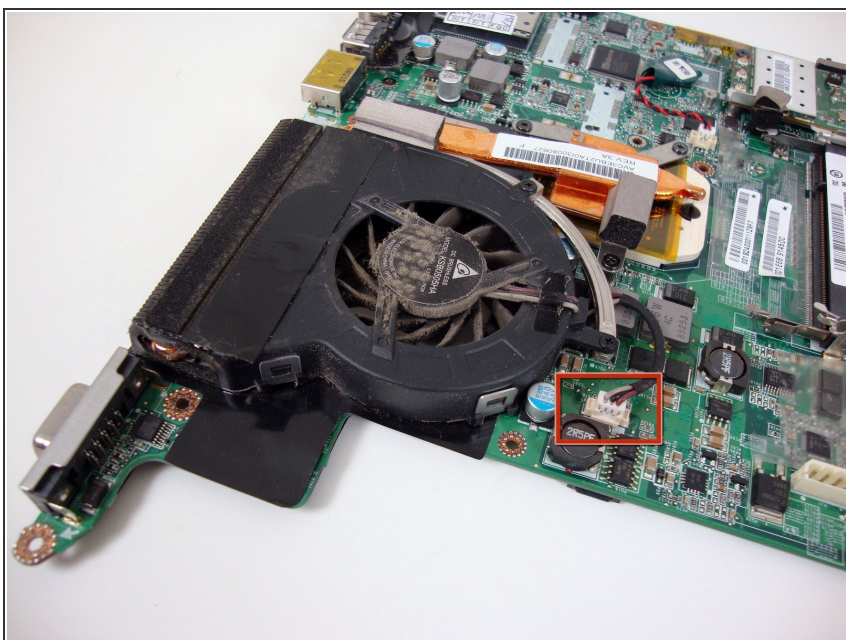
- Remove the motherboard from the left side by gently lifting the left side upward.
- ⓘ The boxed volume control may snag on the laptop frame when pulling the motherboard out.

Step 24



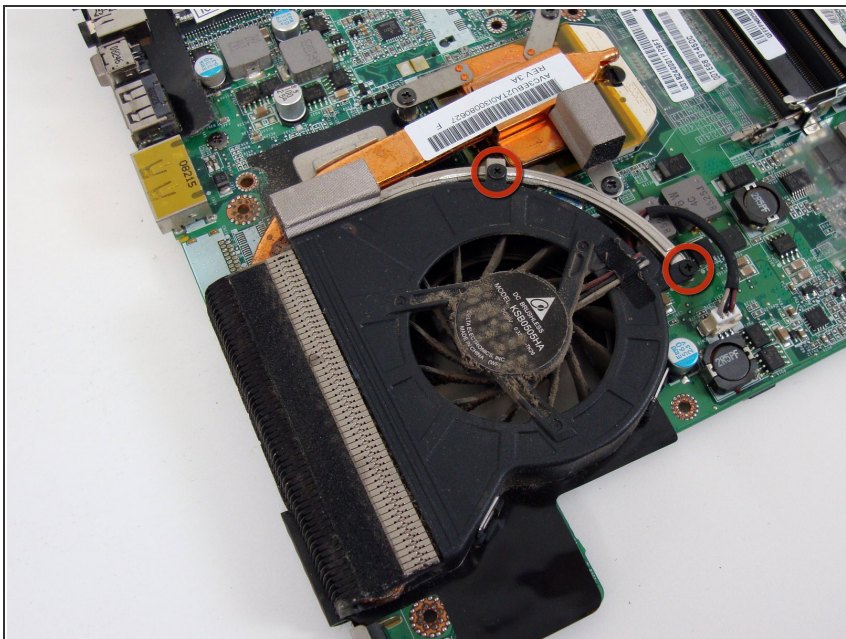
- The motherboard has now been removed from laptop.

Step 25



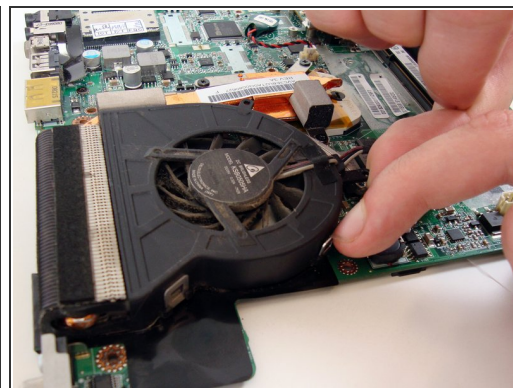
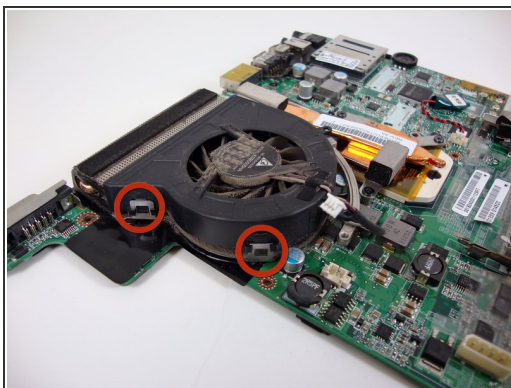
- Detach the fan power cord by pulling it out with your fingers.
- ⓘ Carefully lift up the tape on the fan by peeling the right edge to the left. It can remain attached to the heatsink but should be removed from the fan.

Step 26



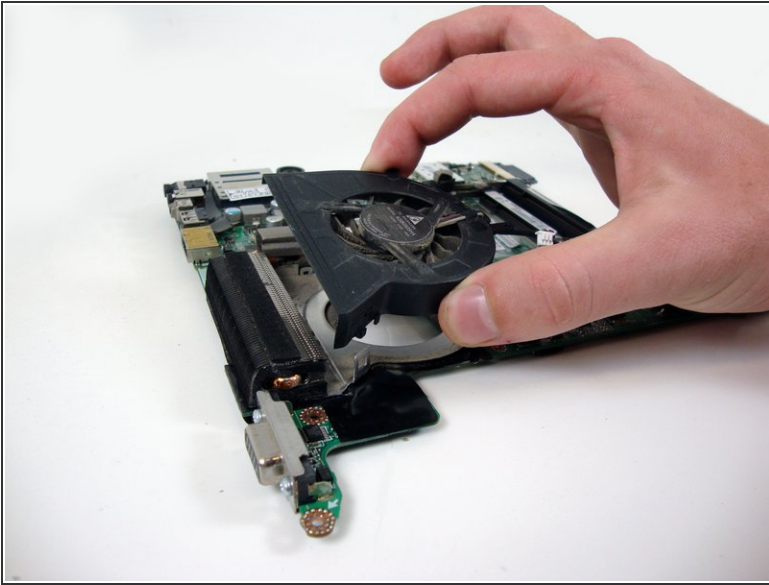
- Remove the circled screws with a Phillips #0 screwdriver.

Step 27



- Locate the 3 circled clips holding the fan to the motherboard.
- Pry each clip outward while applying upward force on the fan as shown.

Step 28



- Carefully pull out the fan.
- ⓘ Note: replacing the fan is highly recommended
- Optionally you may clean the fan with Air + Q-Tips. To remove the blade turn the fan over and gently pull the fan blade from the housing.
- ⚠ If the fan is no longer operational, it may be possible to temporarily repair it by removing the fan blade and put a small amount of WD-40 on the pinion shaft hole the fan rotates in. A toothpick is a good applicator. Do NOT contaminate the motor area with any of the dust/grime that has accumulated.
- ☑ Insert the fan blade and move the blades with your finger. It should spin freely and cog to a stop. Again this is a temporary fix!

To reassemble your device, follow these instructions in reverse order.