



Washing Machine

Written By: Elisabeth Herbeck



INTRODUCTION



Dismantling and Recycling Centre (DRZ)

Katharina Lenz, Vienna / Austria

Health & Safety

Dismantling of washing machines doesn't include any harmful steps. Nonetheless workers should work in pairs and wear personal protection equipment like gloves, goggles, apron and robust shoes.

Note:

This is a general guide for most front loading washing machines. As the construction of washing machines can differ, the dismantling steps mentioned below can vary in their order. However, the described steps show what parts the removal should focus on. The most important parts are: the motor, the water pump containing copper coils and the capacitor.



TOOLS:

- Several screwdrivers (T1) (1)
- Flathead Screwdriver (T2) (1)
- Hammer (T3) (1)
- Side cutter (T4) (1)
- Pliers (T5) (1)
- Industrial Scissors (T6) (1)
- Cutter (T7) (1)
- Power Screw Driver (T8) (1)
- Industrial scale (T9) (1)
- Pipe Wrench (1)
- Socket Wrench set (1)
- Ring / open-end spanners (1)

Step 1 — Disassembling Washing Machines



- Start with the washing machine in an upright position.

Step 2



- Cut off the power supply cable. Dispose of the plug separately (mixed waste).

Step 3



- Cut off and remove the water hoses (careful – they might still contain water!).

Step 4



- Turn the machine upside down and open the bottom panel (if there is one).

Step 5



- Remove the rear cover by unscrewing it.

Step 6



- Remove the V-belt.

Step 7



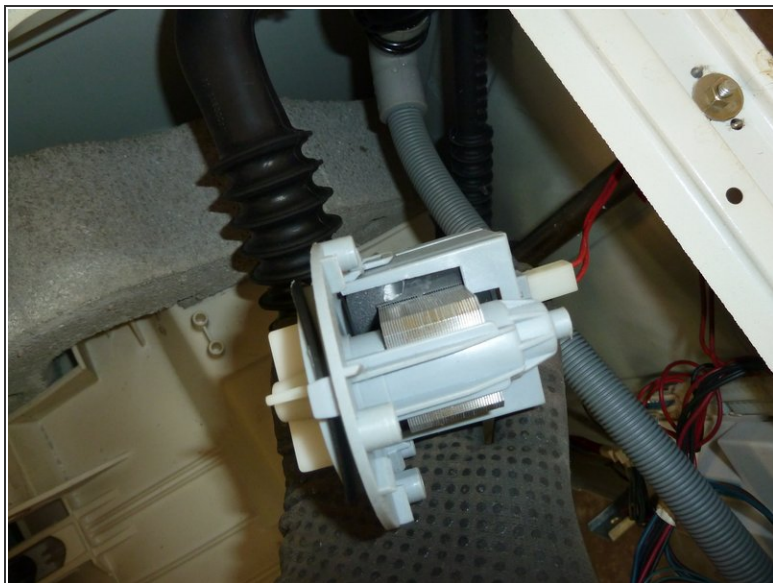
- Unplug all wires.

Step 8



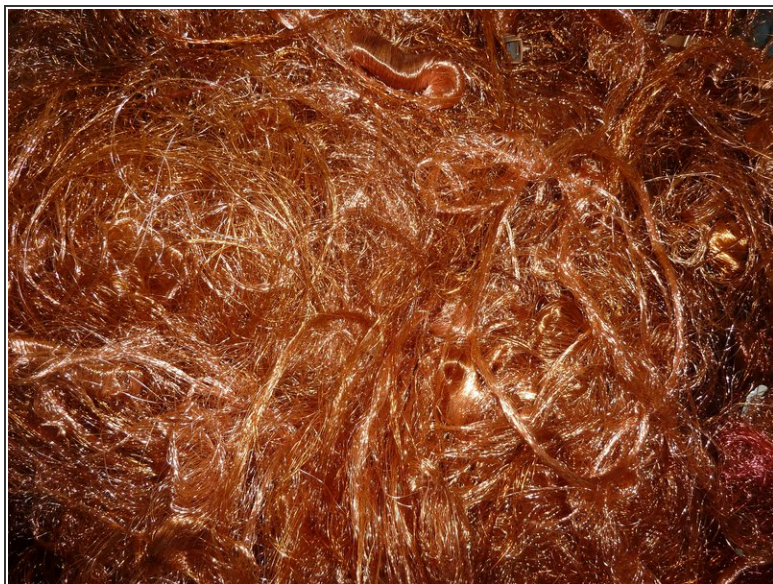
- Unscrew the motor from the outside and the inside; then, remove it.

Step 9



- Unscrew and remove the water pump.

Step 10



- Remove the copper coils from the inside of the water pump.

Step 11



- Unscrew and remove the aluminium drive wheel.

Step 12



- Cut and remove the springs holding the drum.

Step 13



- Unplug and remove the water pipe.

Step 14



- Unscrew the buffer.

Step 15



- Remove the bottom front cover.

Step 16



- Remove the lint collector and unscrew its fixture.

Step 17



- Remove all internal water hoses.

Step 18



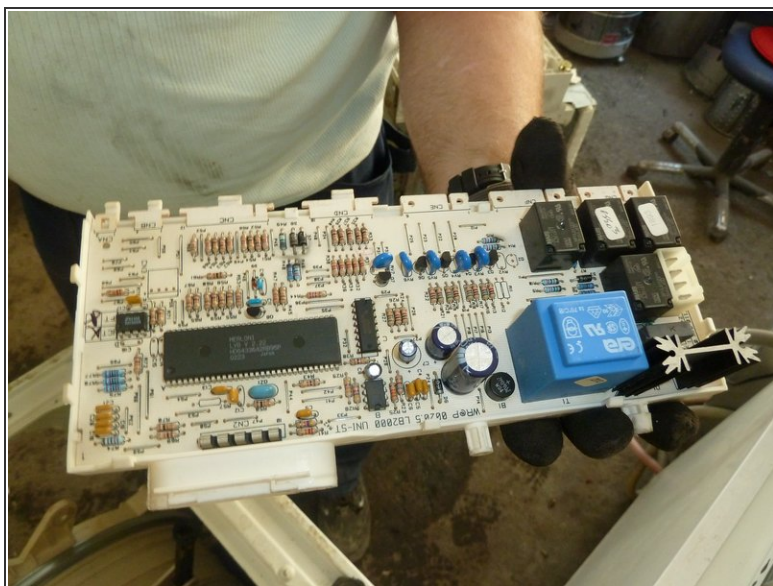
- Unscrew the back cover.

Step 19



- Unclip all wires.

Step 20



- Remove the switch panel.

Step 21



- Unscrew the grounding wire.

Step 22



- Turn the machine bottom down again.

Step 23



- Remove the washing agent drawer.

Step 24



- Unscrew and remove the door.

Step 25



- Unscrew the washing agent drawer chest.

Step 26



- Unscrew the plastic part from the inside and outside.

Step 27



- Remove the remaining springs that hold the drum.

Step 28



- Unscrew and remove the metal bar.

Step 29



- Unscrew and remove the switchboard.

Step 30



- Unclip and cut all wires.

Step 31



- Remove plastic parts.

Step 32



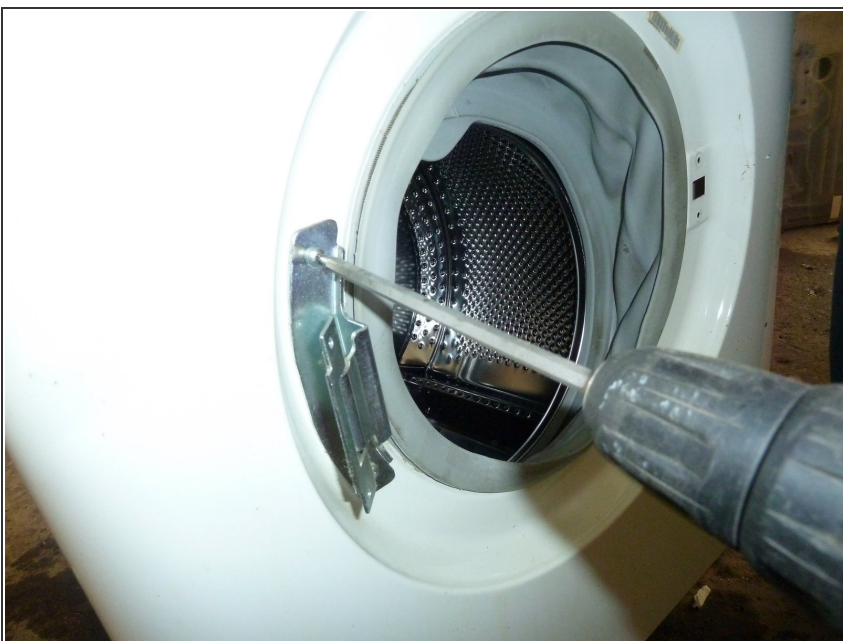
- Remove the magnet valves.

Step 33



- Unscrew and remove the pressure switch.

Step 34



- Unscrew the door fixture.

Step 35



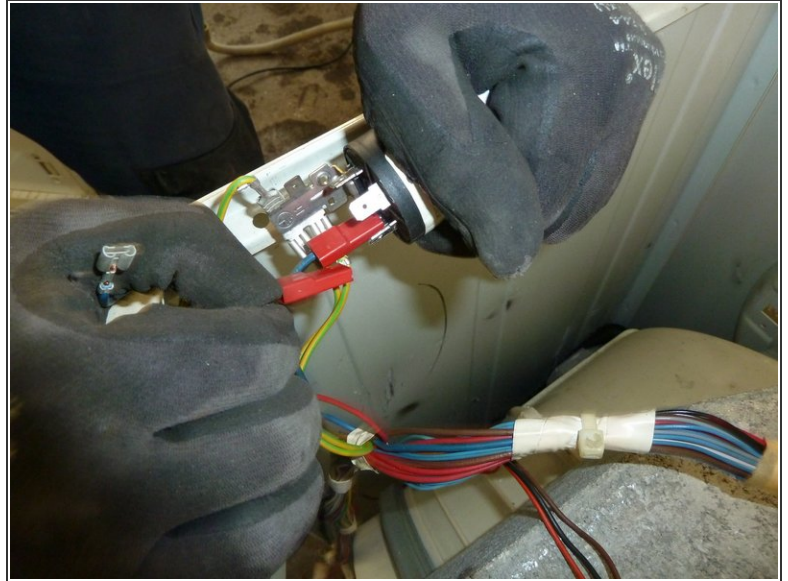
- Remove the slim spring around the door opening. (It holds the rubber sealing in place).

Step 36



- Now, remove the rubber sealing.

Step 37



- Remove the capacitor and unclip all wires, being careful not to touch the terminals as this could lead to a potentially dangerous electrical discharge.

Step 38



- Tilt the machine and remove the drum.
- Now, the metal case should be empty.

Step 39

- Remove the concrete weight.

Step 40

- Again, remove the spring around the drum, and the rubber sealing.

Step 41



- Unscrew and remove the water hose.

Step 42



- Remove metal fixtures.

Step 43



- Continue dismantling the fixture around the drum.

Step 44



- Unscrew and remove the metal belt around the plastic fixture around the drum.

Step 45



- Open and remove the case around the drum.

Step 46



- Unscrew and remove the heating element.

Step 47



- Remove all metal parts from the plastic case.

Step 48



- Separate the remaining materials according to their type and go on with the appropriate data sheet (e.g.

aluminium, ferrous metals, plastic, further PWBs, etc.).

- Make sure the plastic parts are completely free of metal pieces.
-