



Electric Jigsaw

Written By: Elisabeth Herbeck



INTRODUCTION



Dismantling and Recycling Centre (DRZ)

Katharina Lenz, Vienna / Austria

Health & Safety

Dismantling doesn't include any harmful steps. Nonetheless workers should wear personal protection equipment like gloves, goggles, apron and robust shoes.

Note

This is a general guide for most electric jigsaws. As the construction can differ, the dismantling steps mentioned below can vary in their order. However, the described steps show what parts the removal should focus on.

TOOLS:

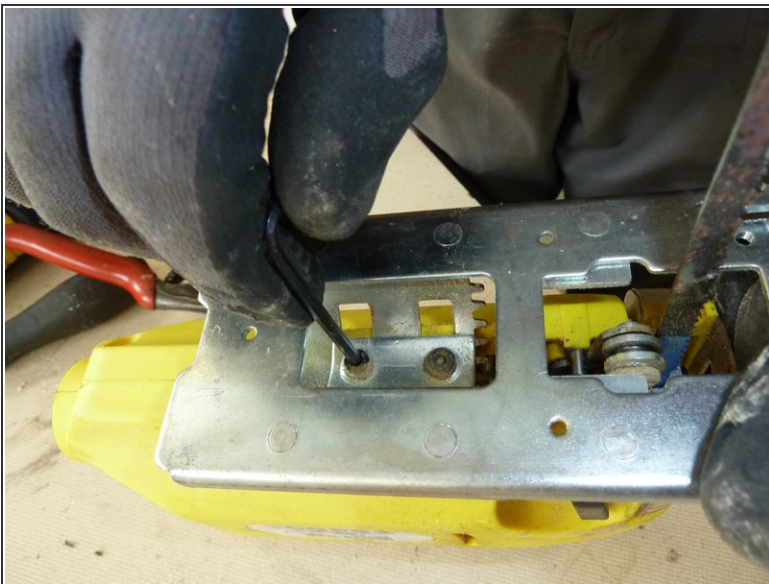
- [Several screwdrivers \(T1\)](#) (1)
 - [Hammer \(T3\)](#) (1)
 - [Side cutter \(T4\)](#) (1)
 - [Pliers \(T5\)](#) (1)
 - [Industrial scale \(T9\)](#) (1)
 - [Industrial Scissors \(T6\)](#) (1)
 - [Power Screw Driver \(T8\)](#) (1)
-

Step 1 — Electric Jigsaw



- Cut the power cable. Dispose of the plug separately (mixed waste).

Step 2



- Unscrew and remove the bearing surface.

Step 3



- Remove the protection shield.

Step 4



- Unscrew and remove the saw blade.

Step 5



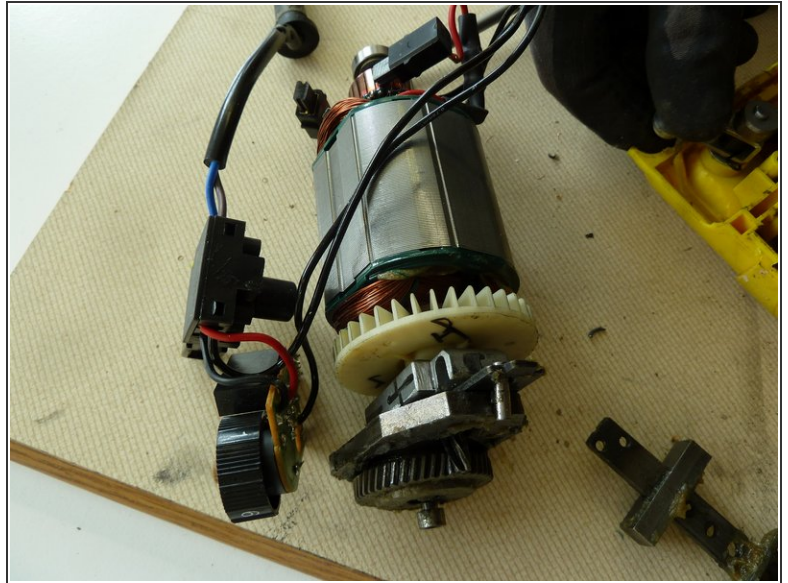
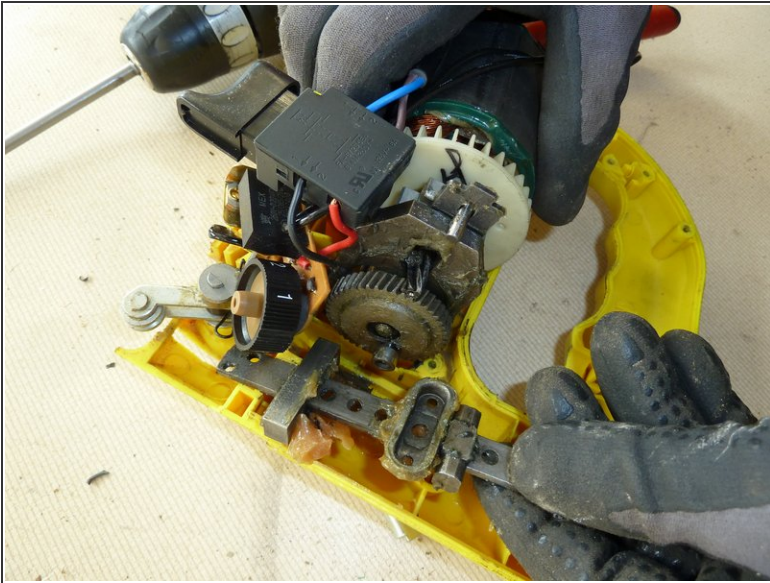
- Unscrew and open the case.

Step 6



- Unscrew the power cable.

Step 7



- Remove the motor.

Step 8



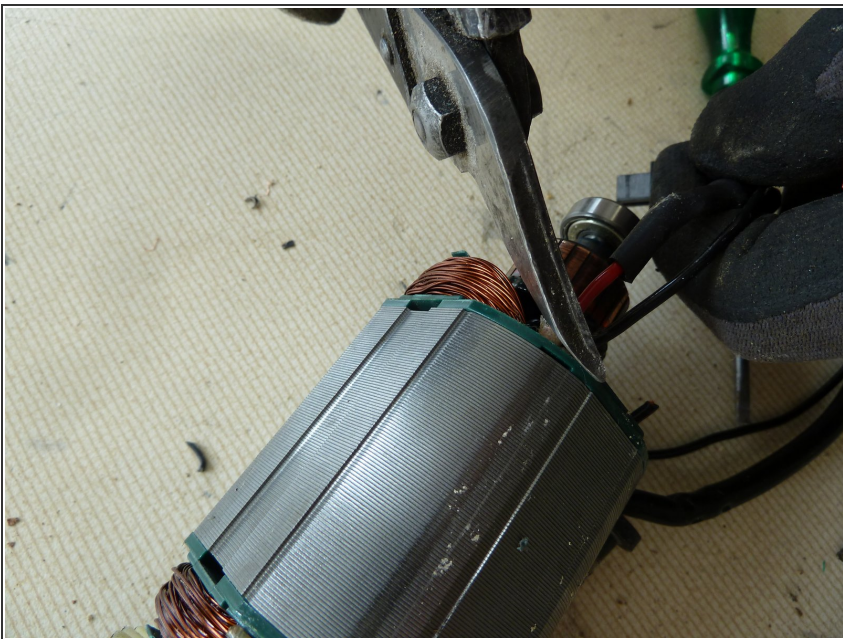
- Remove the pendulum stroke.

Step 9



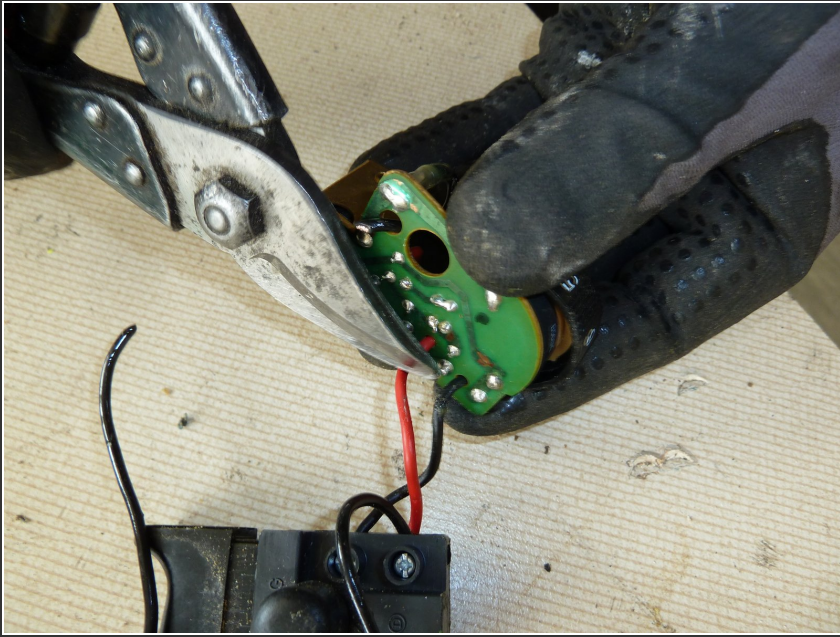
- Unscrew the motor.

Step 10



- Cut all wires.

Step 11



- Remove the Printed Wiring Board (PWB) by cutting all connected wires.

Step 12



- Remove the switch.

Step 13



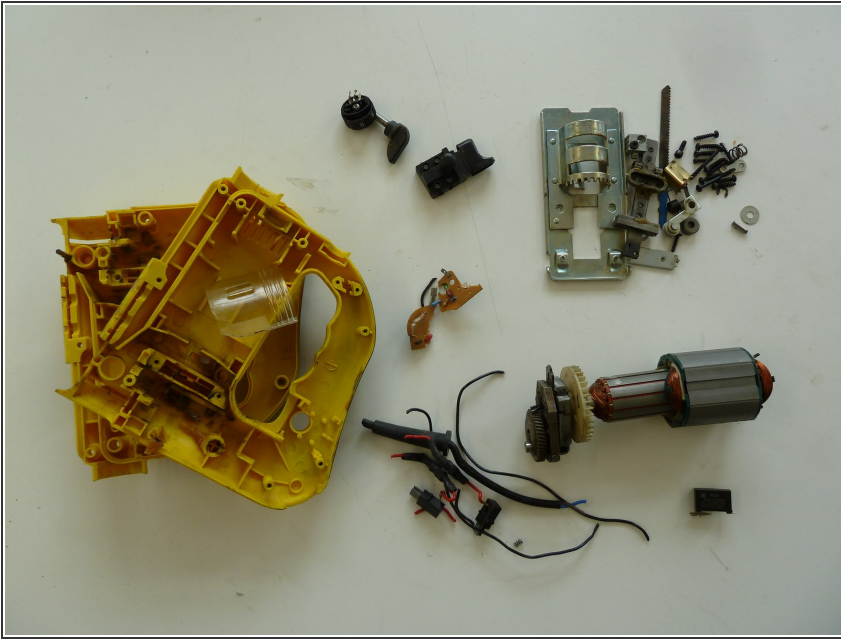
- Remove the capacitor.

Step 14



- Cut off wires.

Step 15



- i Separate the remaining materials according to their type and go on with the appropriate data sheet (e.g. aluminium, ferrous metals, plastic, further PWBs, etc.).
- i Make sure the plastic parts are completely free of metal pieces.