



Canon EOS 30 Battery Door Replacement

Written By: Dozuki System



INTRODUCTION

This fix is safe and only requires a screwdriver.



TOOLS:

- [Phillips #00 Screwdriver](#) (1)
-

Step 1 — Canon EOS 30 Battery Door Replacement



- Remove two 4.8 mm black screws on the front of the camera.

Step 2



- Remove one 4.3 mm black screw under the lens ring and one 4.8 mm black screw on the bottom of the camera.

Step 3



- Remove one 4.8 mm black screw on the left side.

Step 4



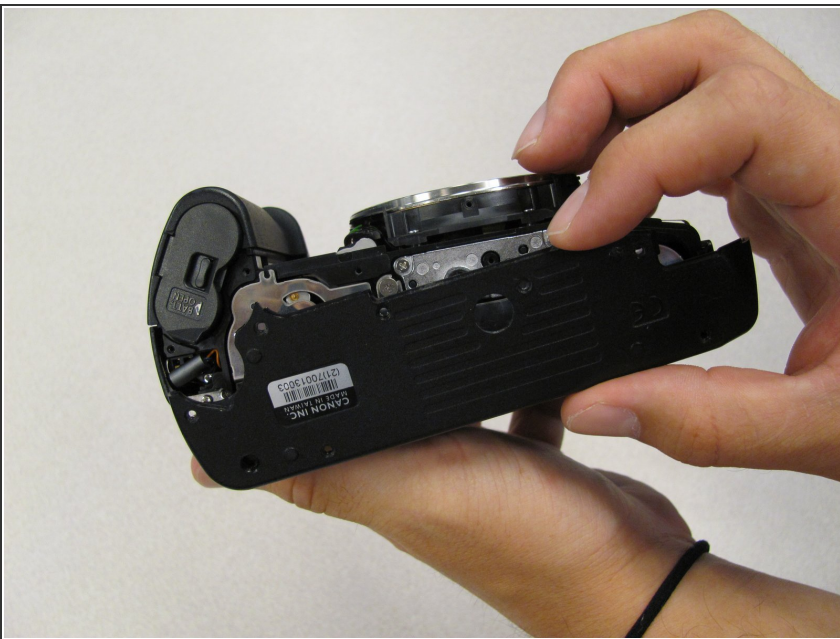
- Remove the front panel by lifting out the side opposite the grip.

Step 5



- Remove seven 4.25 mm black screws on the bottom panel.

Step 6



- Remove the bottom panel.

Step 7



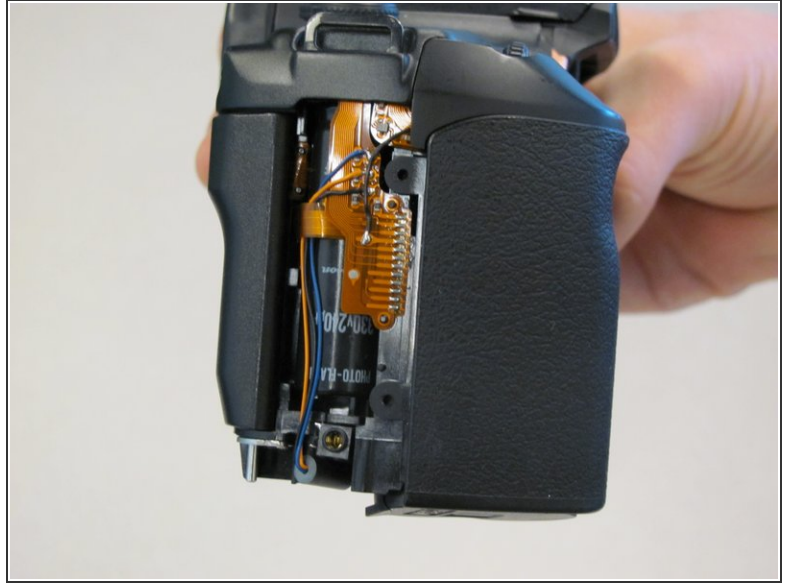
- Remove two 6.5 mm black screws from the panel.

Step 8



- Remove plastic Remote Control Socket cap by pulling it straight out.

Step 9



- Slide panel toward bottom of camera to remove.

Step 10



- Remove outer eyepiece by sliding it upwards.

Step 11



- Remove two 4.75 mm screws from top of camera.

Step 12




- Remove four 4.3 mm screws from back of camera.

Step 13




- Slowly separate top panel from camera by pushing up.

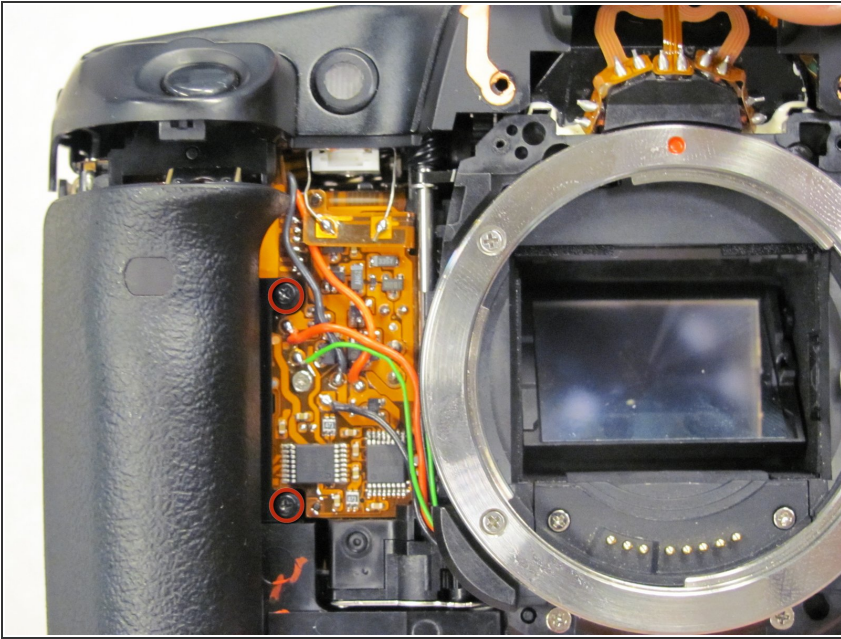
 Be careful, as top panel is still attached by wiring and ribbon cable to the camera.

Step 14



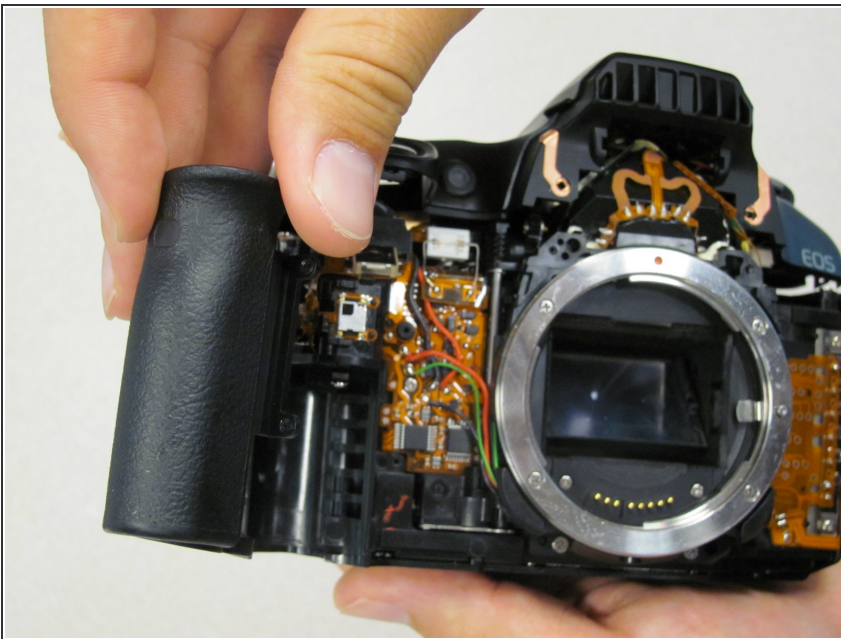
 Separating the top panel too far can damage the connecting wiring.

Step 15



- Remove two 5.5 mm screws from front of camera.

Step 16



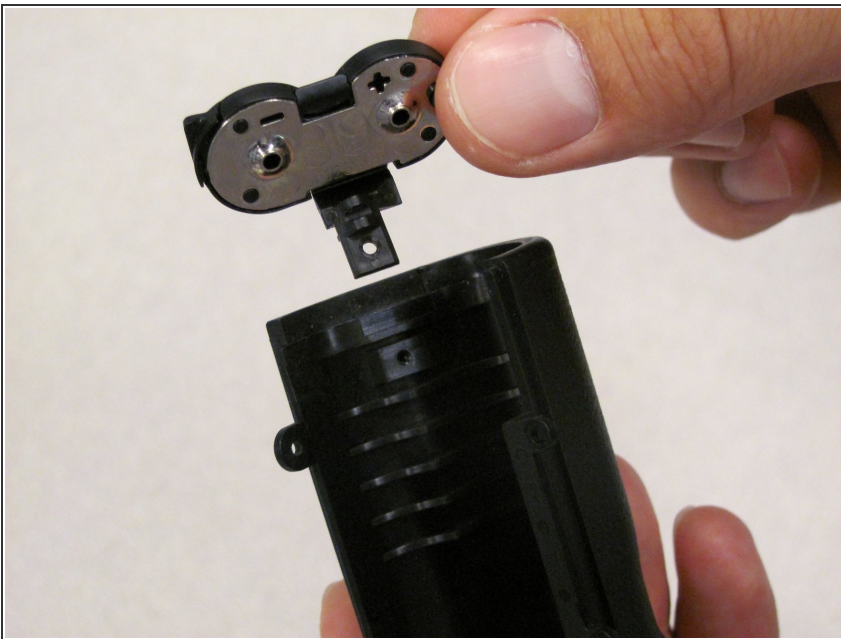
- Remove grip panel.

Step 17



- Remove one black screw from battery door on underside of grip.

Step 18



- Remove battery door.

To reassemble your device, follow these instructions in reverse order.