



# Canon EOS 30 Remote Control Socket Replacement

Written By: Dozuki System



---

## INTRODUCTION

The Remote Control Socket is not difficult to access. However, it's connections are soldered, so it will be difficult to remove.



### TOOLS:

- [Phillips #00 Screwdriver](#) (1)
-

## Step 1 — Canon EOS 30 Remote Control Socket Replacement



- Remove two 4.8 mm black screws on the front of the camera.

## Step 2



- Remove one 4.3 mm black screw under the lens ring and one 4.8 mm black screw on the bottom of the camera.



### Step 3



- Remove one 4.8 mm black screw on the left side.

### Step 4



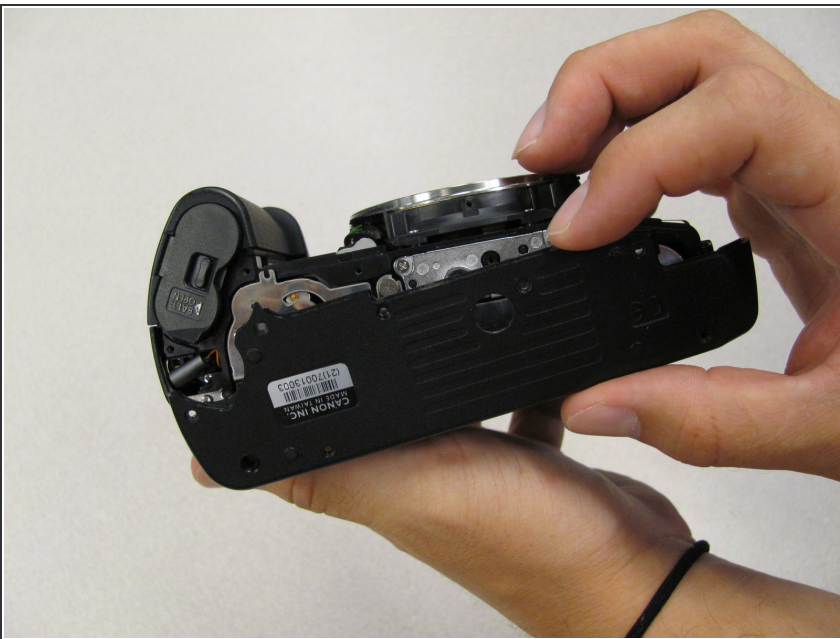
- Remove the front panel by lifting out the side opposite the grip.

## Step 5



- Remove seven 4.25 mm black screws on the bottom panel.

## Step 6



- Remove the bottom panel.

## Step 7



- Remove two 6.5 mm black screws from the panel.

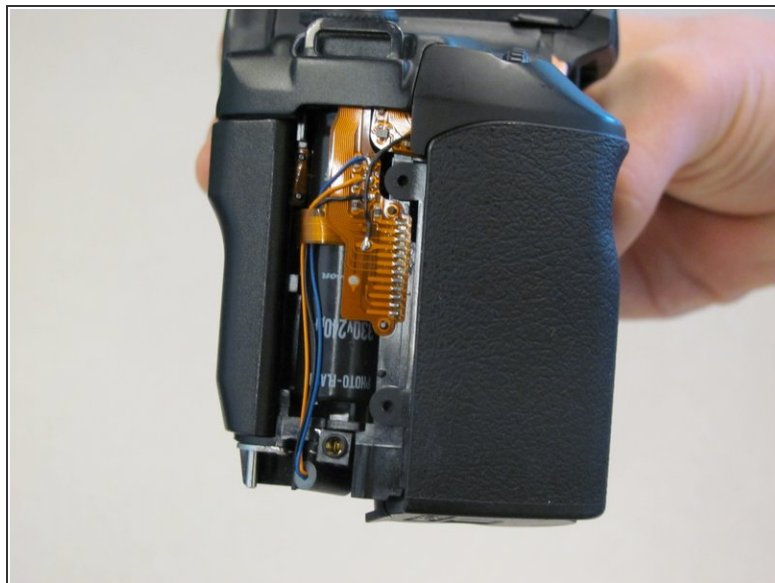
## Step 8



- Remove plastic Remote Control Socket cap by pulling it straight out.



## Step 9



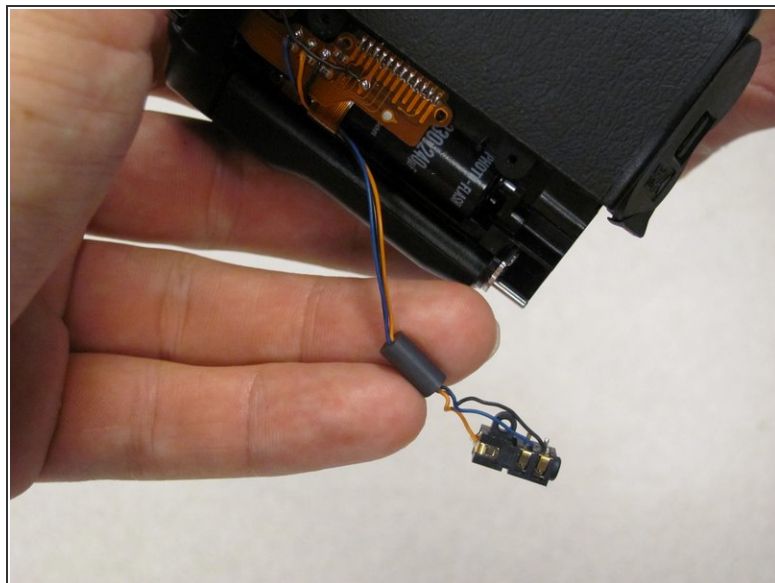
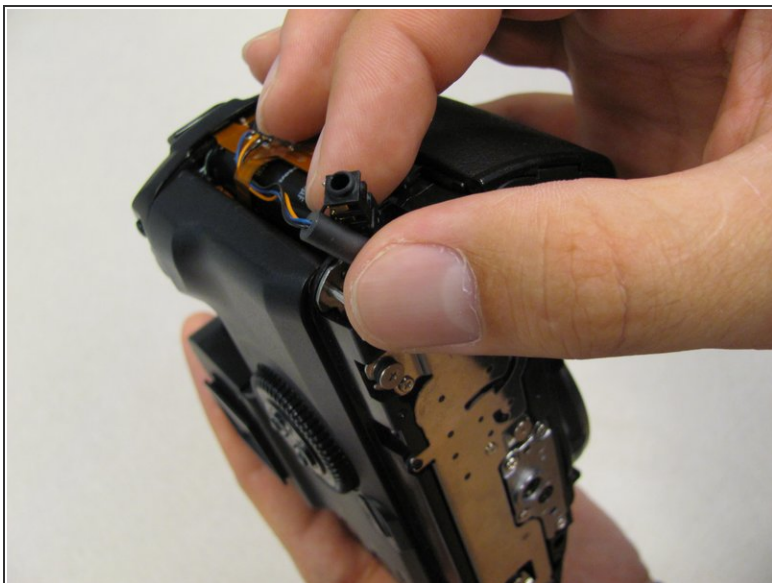
- Slide panel toward bottom of camera to remove.

## Step 10



- Remove one 4.8 mm silver screw securing Remote Control Socket to camera.

## Step 11



- Remote Control Socket is now secured by 3 wires.
- Desolder connections to replace Remote Control Socket.

To reassemble your device, follow these instructions in reverse order.