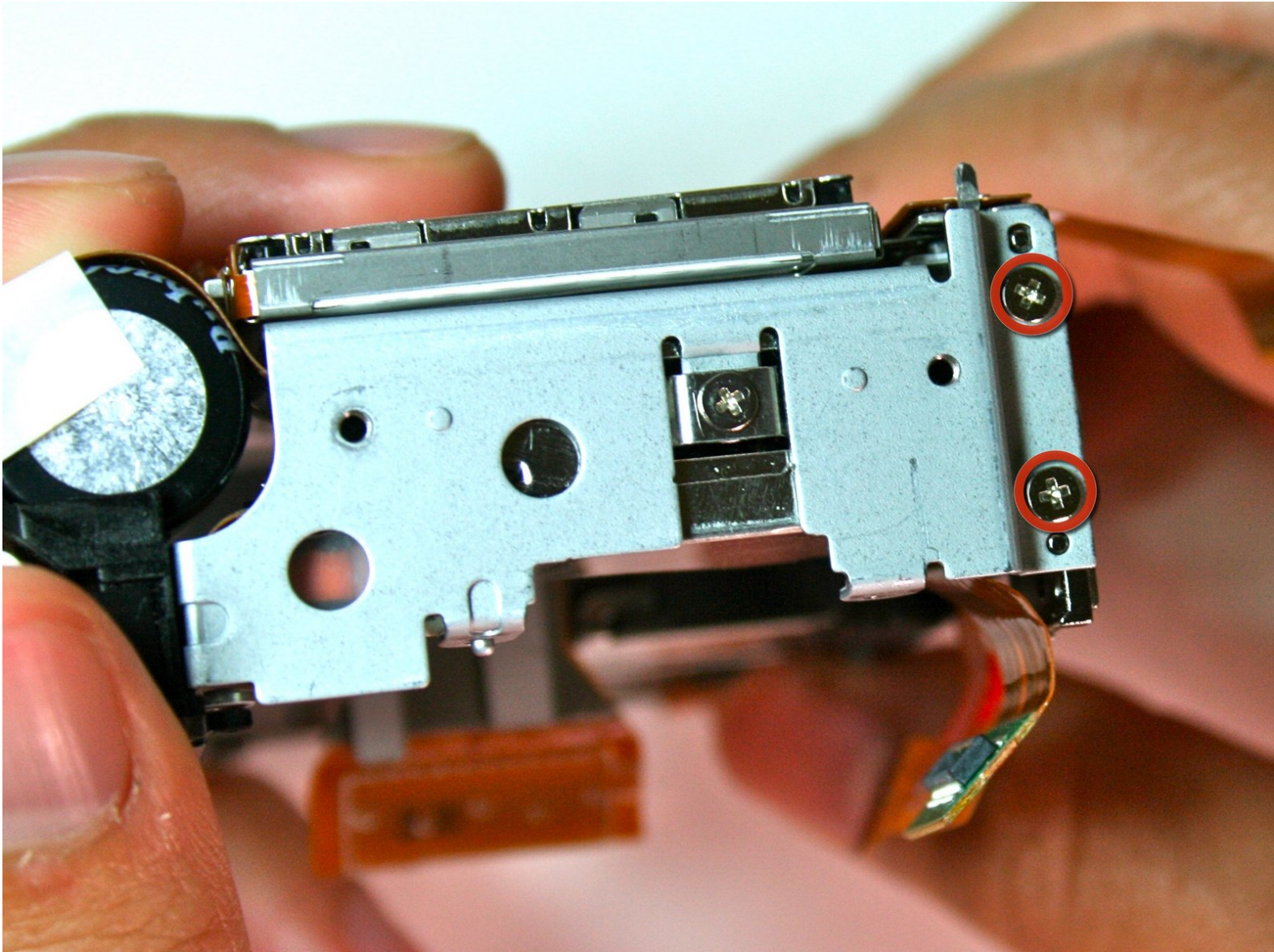




# Canon Powershot S200 Screen Replacement

Written By: Dozuki System



---

## INTRODUCTION

The screen is a crucial part of the camera: it displays images for consumers to view their pictures instantly. Damage to the screen may require replacement.

---



### TOOLS:

- [Soldering Station](#) (1)
  - [Phillips #00 Screwdriver](#) (1)
-

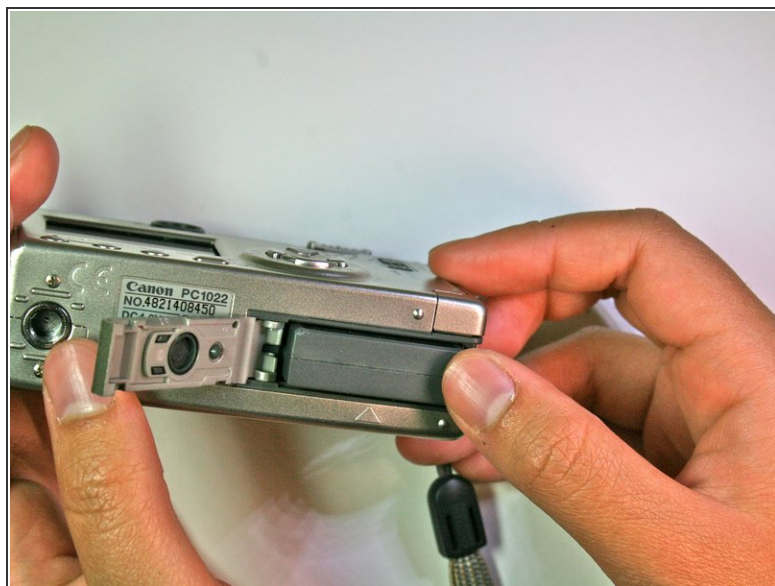


## Step 1 — Canon Powershot S200 Screen Replacement



- Slide grey latch to open the battery compartment.

## Step 2



- Push orange retaining clip to the right to free battery.

### Step 3



- Remove battery from the camera.

### Step 4



- Remove the lanyard.



## Step 5



- Remove the two 2.3mm screws (underneath the name plate) and two 2.8mm screws (next to the threaded tripod mount) from the bottom face of the camera.

⚠ Be careful to keep track of the different screw sizes as you proceed with this guide.

## Step 6



- Remove the single 3.8mm screw from the back face of the camera.

## Step 7



- Remove the two 2.3mm screws from the right face of the camera.

## Step 8



- Remove the two 3.2mm screws (outside edge) and two 3.7mm screws (towards middle) from the left side of the camera body.

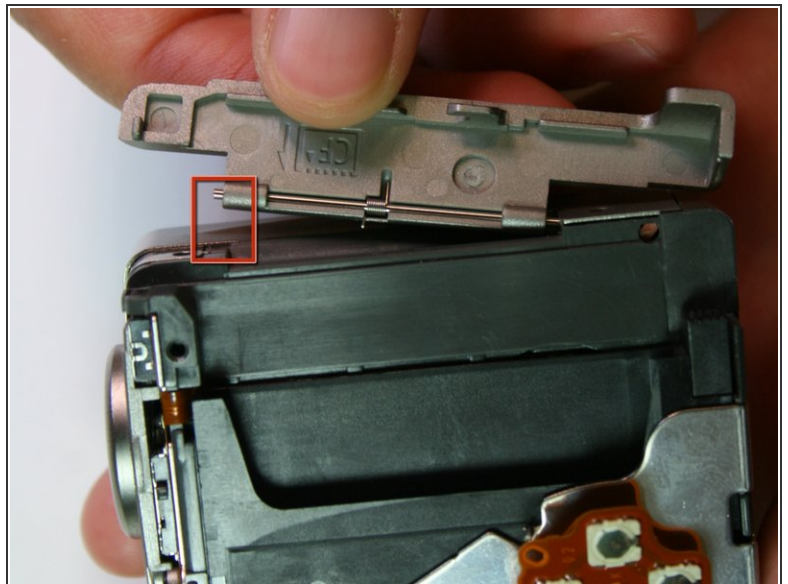
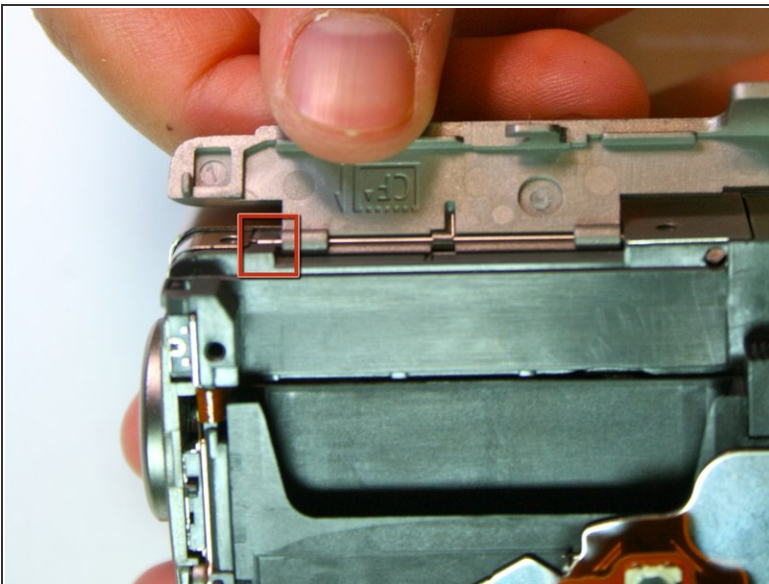


## Step 9



- Pull the back face panel away from the front end of the body. This may take some wiggling and force.

## Step 10



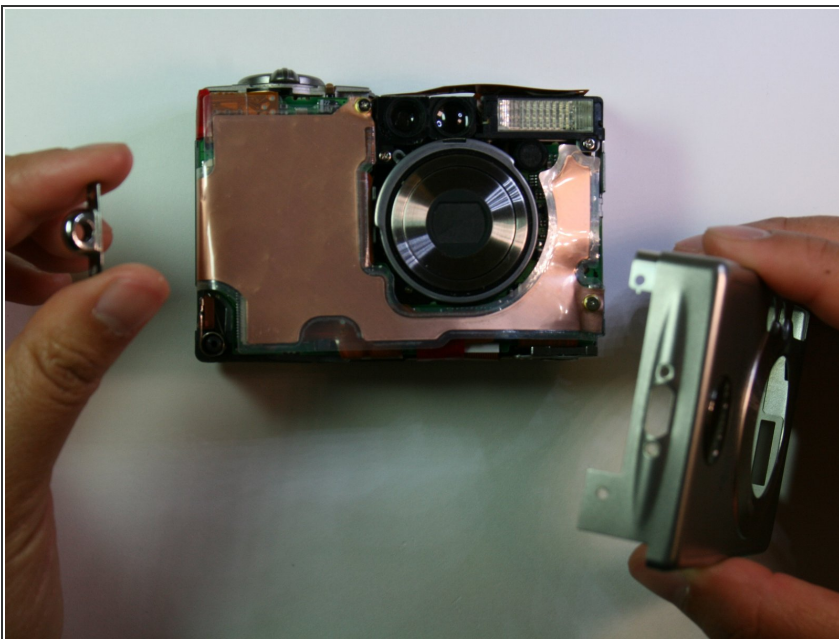
- Remove the CF card door from the left side of the camera body.

## Step 11



- Remove the rubber digital a/v out cap by sliding it out of the groove on the front plate.

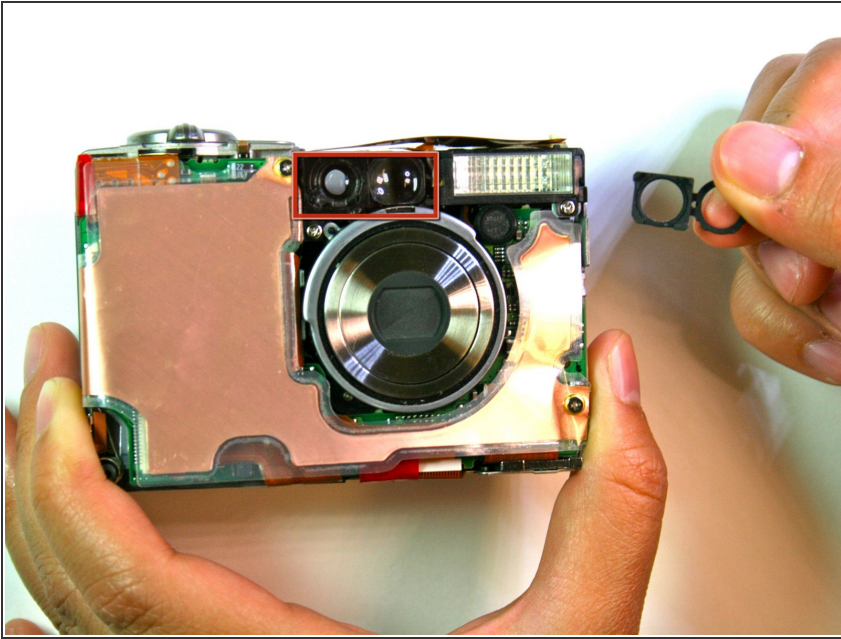
## Step 12



- Remove the front face by sliding it off.

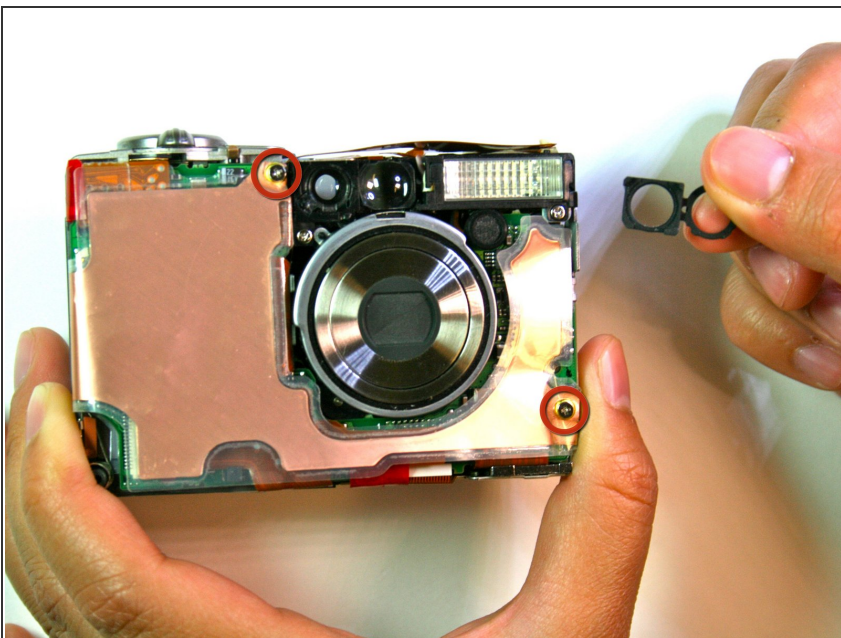


## Step 13



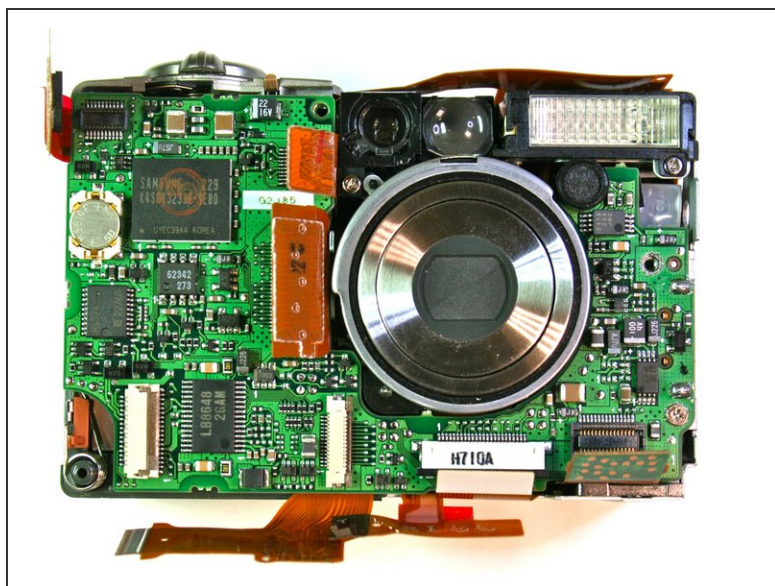
- Remove the rubber seal that goes over the right side of the viewfinder.

## Step 14



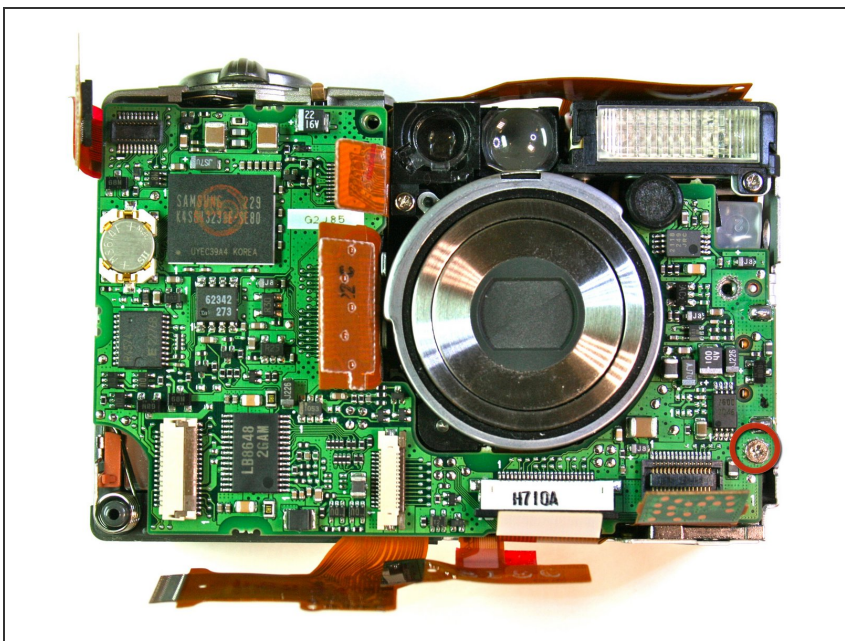
- Remove the two 3.9mm screws that retain the laminated cooper sheet.

## Step 15



- Remove the seven wire connections that connect to the motherboard.

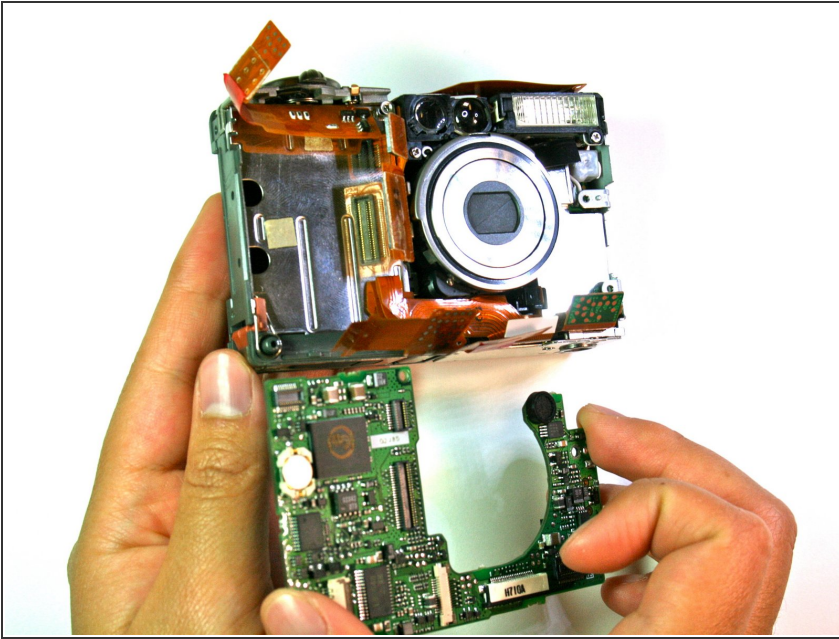
## Step 16



- Remove the single 3.8mm screw that is on the motherboard.

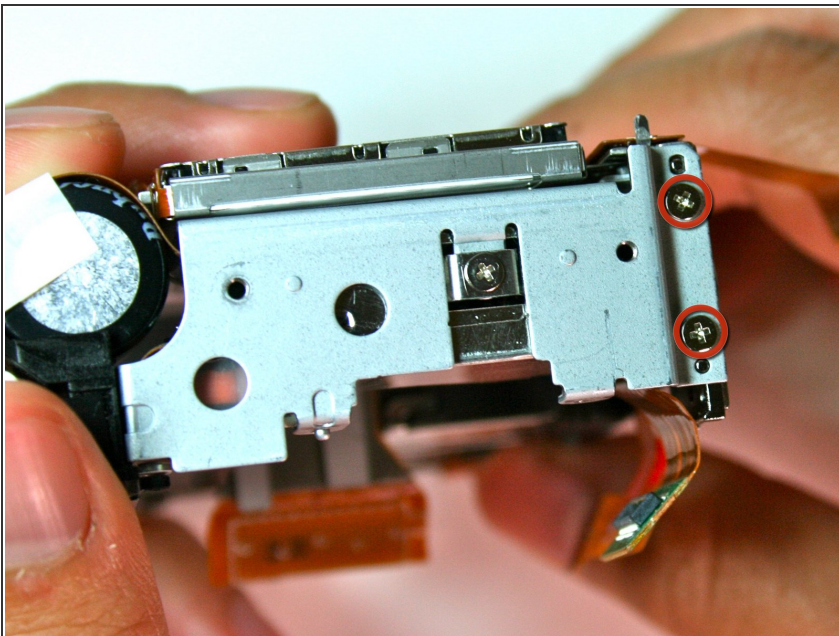


## Step 17



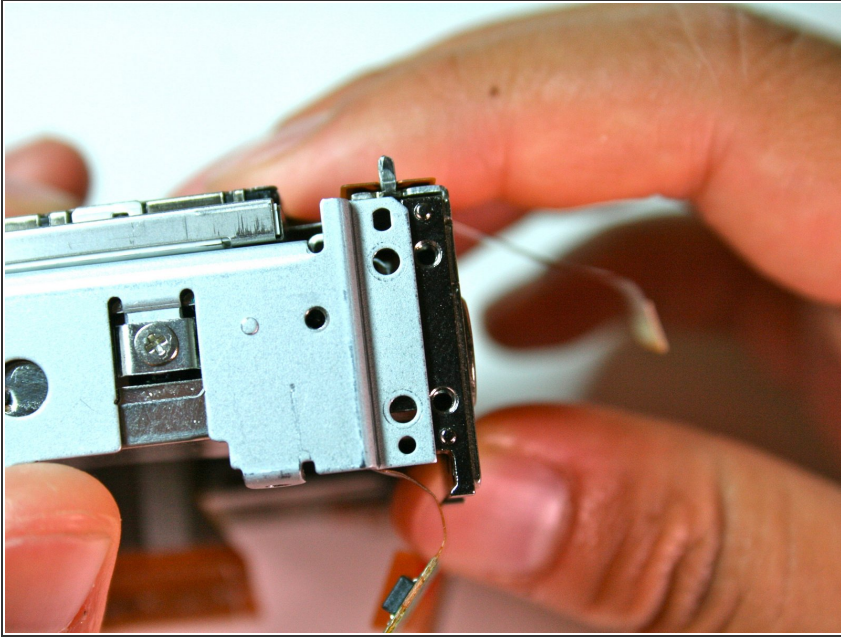
- Carefully remove the motherboard from the main frame of the camera body.

## Step 18



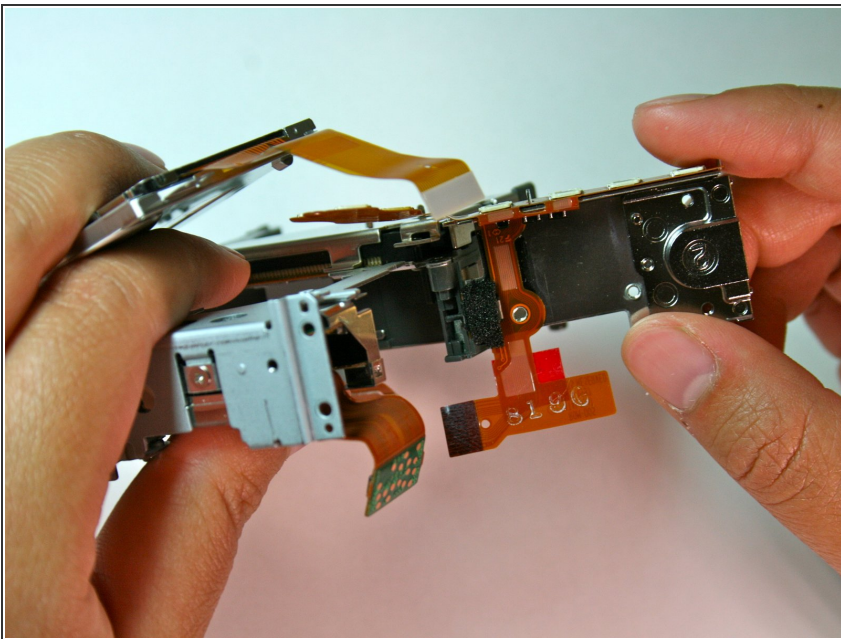
- After completing the removal of the motherboard, remove the tripod mounting screws (3.4mm) on the left side

## Step 19



- Carefully pry the left side of the housing plate from the bottom of the tripod mounting plate, releasing it from the two alignment pegs next to the screws

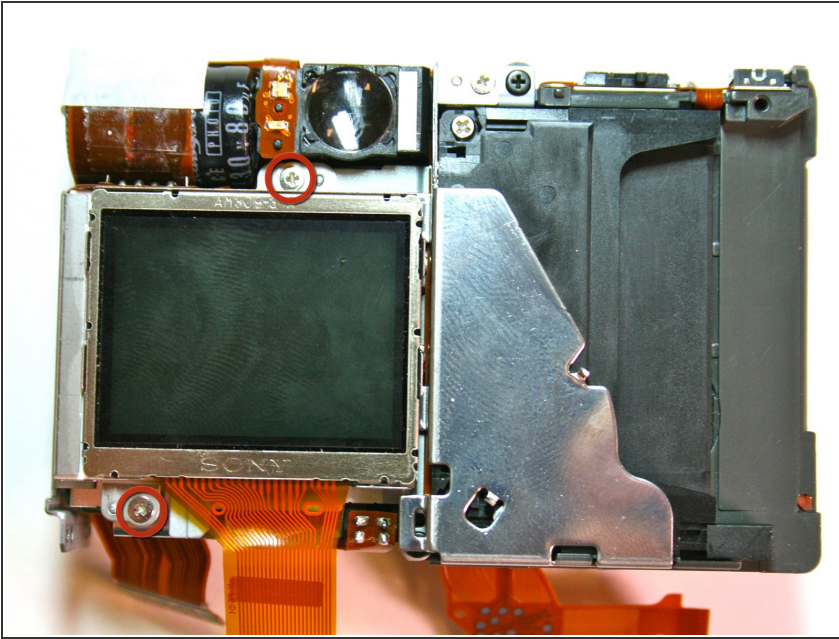
## Step 20



- Lift the left side of the tripod mounting plate towards you, lift free the mounting plate from the rest of the assembly
- Be careful because there are still wire connections attached to the mounting plate which you don't want to remove

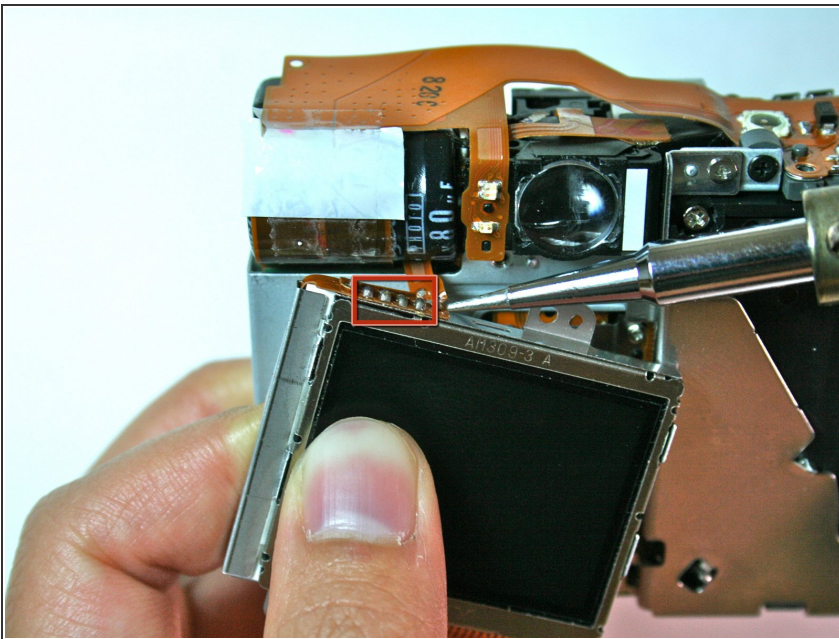


## Step 21



- Remove the 2.1mm screws from the bottom and top of the screen connecting it to the housing plate

## Step 22



- Unsolder the four points at the top of the screen with a soldering iron

To reassemble your device, follow these instructions in reverse order.