



# Canon PowerShot S410 Motherboard Battery Replacement

Written By: Dozuki System



---

# INTRODUCTION

This guide shows you how to remove the motherboard battery and replace it with a new one.

---

## TOOLS:

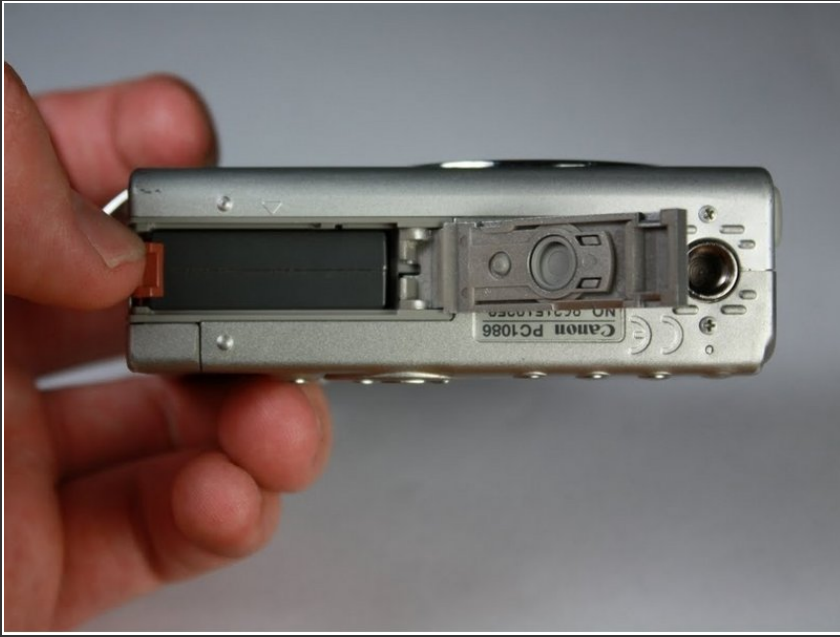
- [Phillips #0 Screwdriver](#) (1)
  - [Plastic Opening Tools](#) (1)
-

## Step 1 — Canon PowerShot S410 Motherboard Battery Replacement



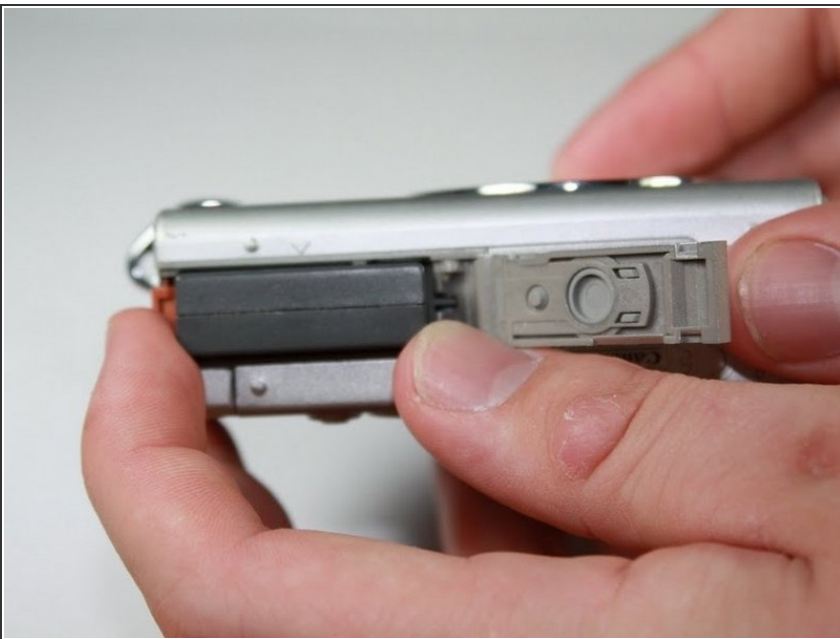
- i** Turn the camera with the bottom side facing up.
- Locate the panel labeled "Batt. Open"
  - Place your finger on the panel and slide it in the direction of the arrow.
  - The slot will swing open revealing the battery pack.

## Step 2



- ❗ Rotate the camera so that the slot is horizontal.
- Pull the orange lever and the battery will spring out slightly.

## Step 3



- Grasp battery and fully pull out of slot
- ❗ When placing the new battery back in the slot, the arrow on the battery must align with the arrow on the camera.



## Step 4



- ① Start by laying the camera flat with the LCD screen facing up.
- Remove the 3.8mm screw in the upper right corner.

## Step 5



- ① Position the camera with the bottom facing up.
- Remove the 4.8mm screw.
- Remove the two 2.3mm screws.

## Step 6



- ① Position the camera so that the rubber "AV Out Digital" tab is facing upward.
  - Slide this rubber tab out of the way to reveal the bottom screw.
  - Remove the two 3.7mm screws.


## Step 7



- ① Turn the camera with the back side facing you.
  - Grip the edges of the back plate, and carefully slide it off.
- ⚠ If there is any resistance in movement, double check there are no screws left in the chassis.

## Step 8



-  Orientate the camera as in the picture.
- Remove the two 2.3mm outer screws.
  - Remove the two 3.8mm screws near the strap bracket.
  - Remove small panel covering mounting bracket.
  - Remove door covering memory card.



## Step 9



- ① Rotate the camera so that the bottom side is facing you.
- Remove the 3.8mm screw below the mounting bracket.

## Step 10



- ① Rotate the camera so that the front is facing you.
- Grasp sides of front cover and carefully pull the front panel off of the camera.



## Step 11



- ① Position the camera so that the motherboard is facing you.
- Remove the plastic flap covering the motherboard.
- Place edge of iPod Opening Tool in the small opening between the battery and the motherboard.
- Pry the battery off of the motherboard using the iPod Opening Tool.

To reassemble your device, follow these instructions in reverse order.