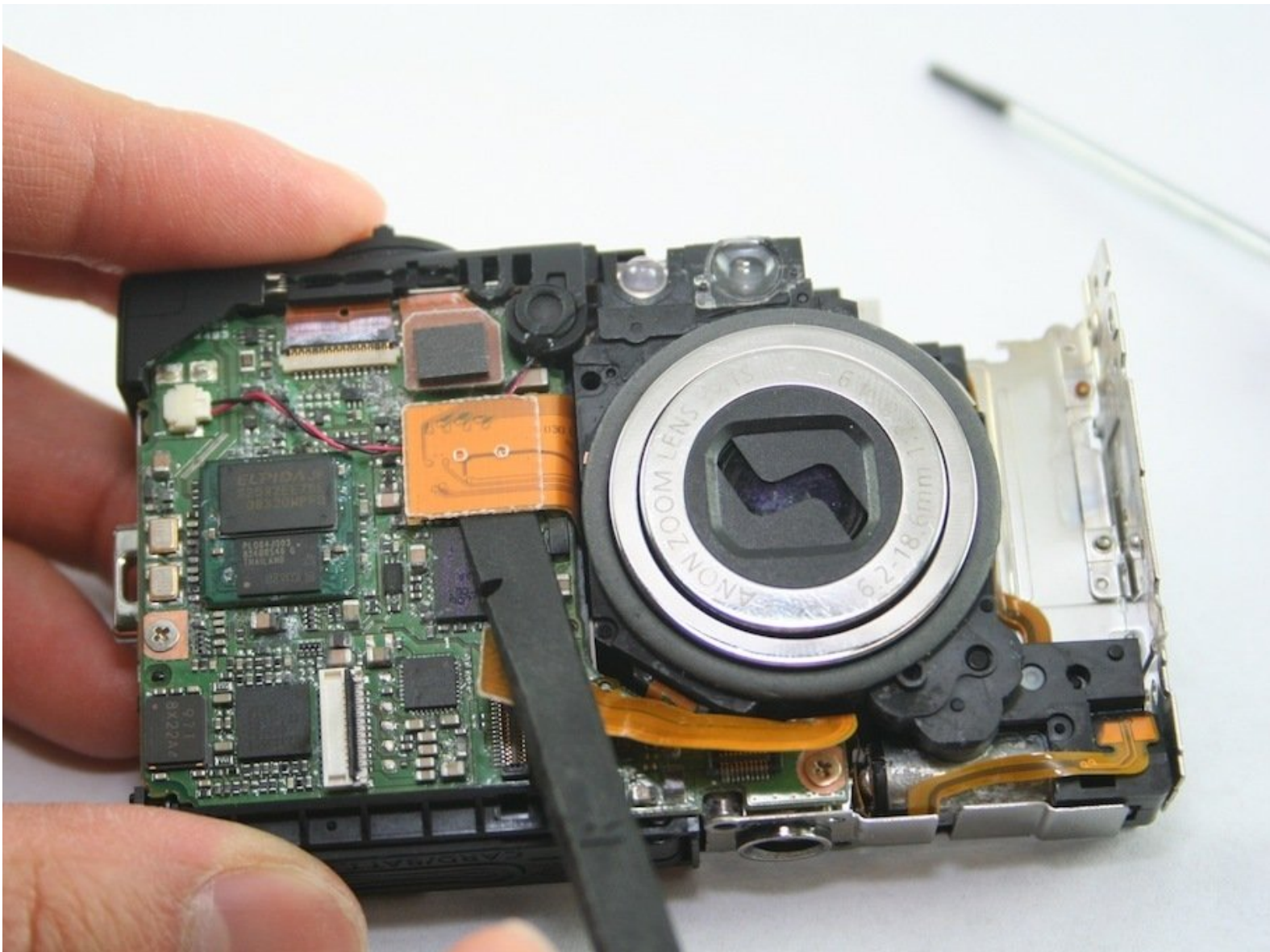




Canon PowerShot SD1100 IS Top Button Assembly Replacement

Written By: Dozuki System



INTRODUCTION

In this guide you will learn to remove the top button assembly, which can be replaced if damaged or filled with debris.



TOOLS:

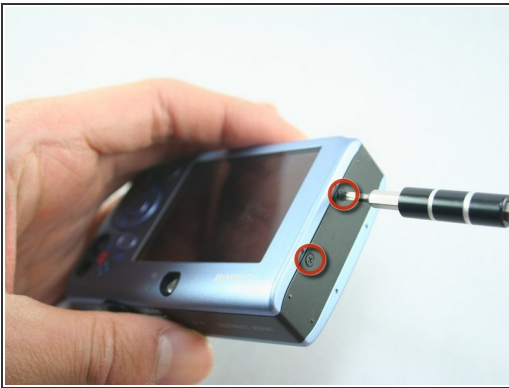
- [Spudger](#) (1)
-

Step 1 — Canon PowerShot SD1100 IS Top Button Assembly Replacement



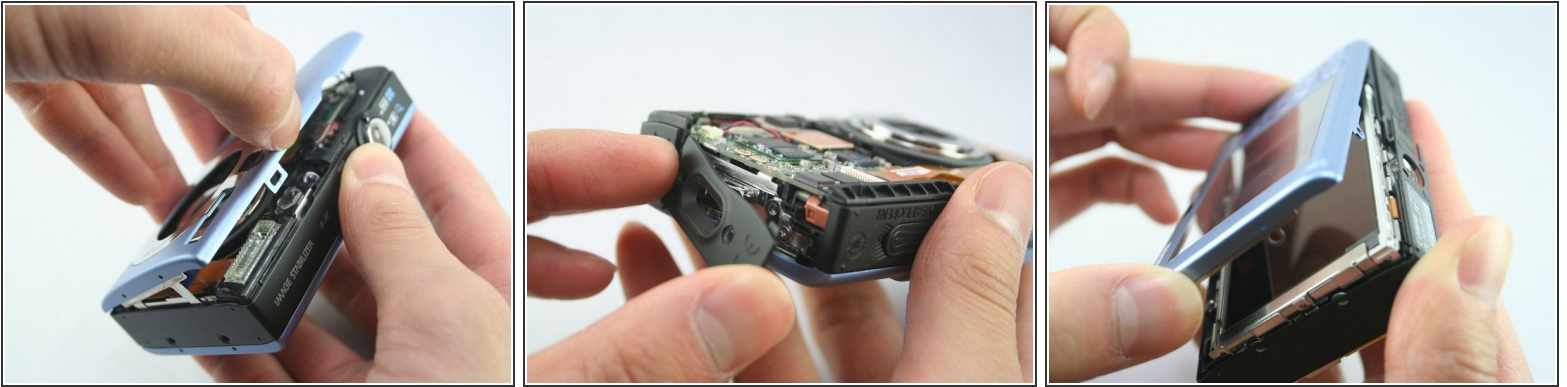
- Remove wrist strap and battery.

Step 2



- Remove 2 screws from each side of the camera (4 total, 0.102 in).
 - Remove 2 screws from the bottom on the camera (0.138 in).
- ⚠ Do not mix the 4 side screws with the 2 bottoms ones; they are different sizes.

Step 3



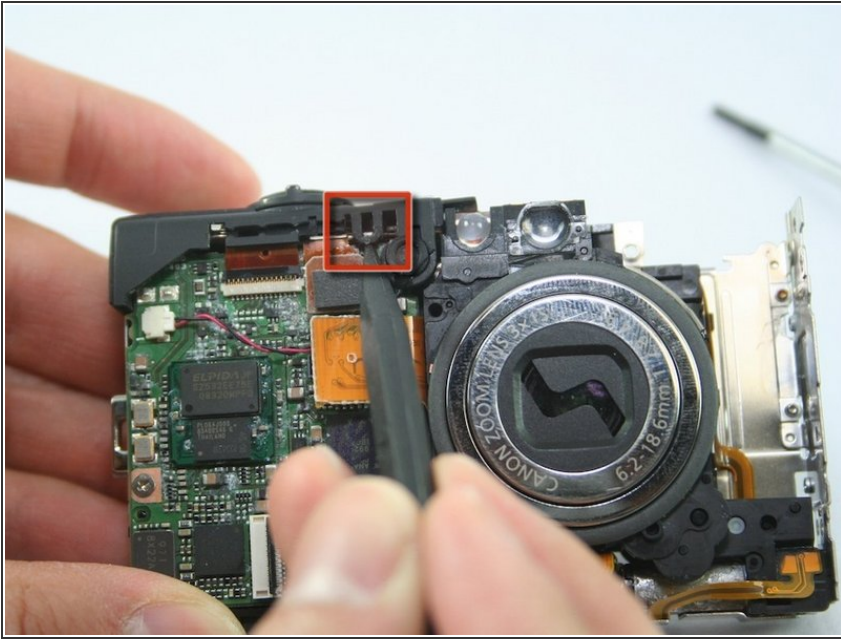
- Gently pull off the front cover.
- ⓘ The plate on the side should come off.
- Gently pull off the back cover.

Step 4



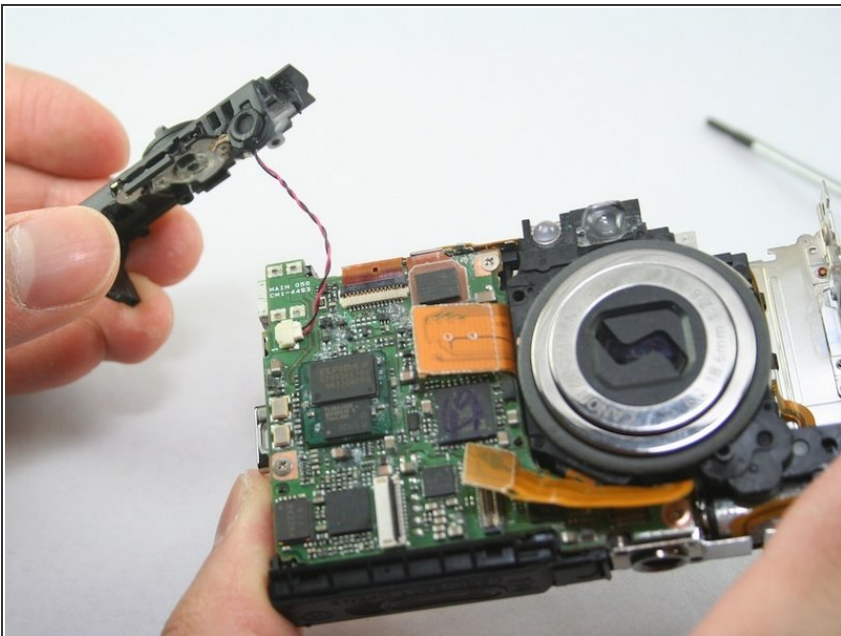
- The cases should now be removed.

Step 5



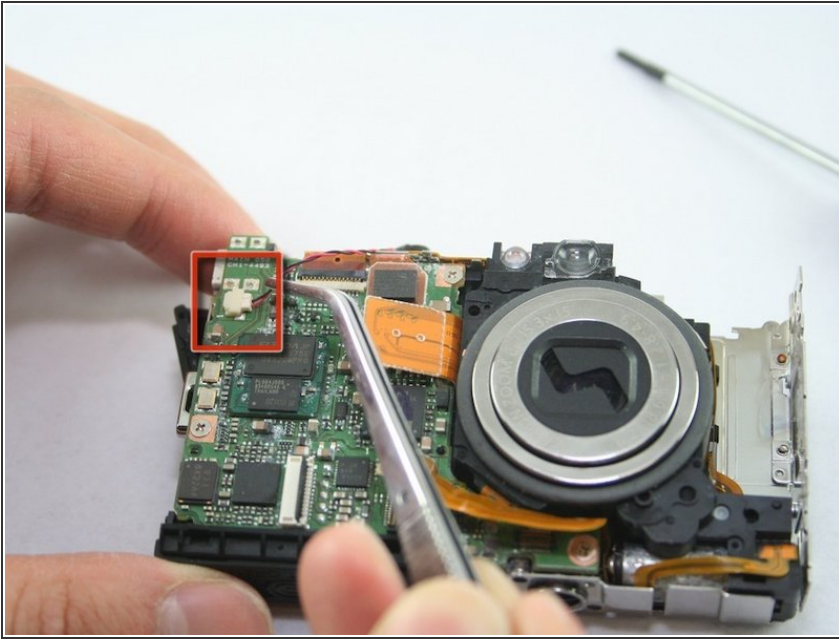
- Use the spudger to disconnect the black tab.

Step 6



- Gently pull off the shutter button assembly.

Step 7



- Use the tweezers to disconnect the microphone cable.

Step 8



- The shutter button assembly should now be removed.

To reassemble your device, follow these instructions in reverse order.