



# Canon PowerShot SD200 Buttons Replacement

Written By: Dozuki System



---

## INTRODUCTION

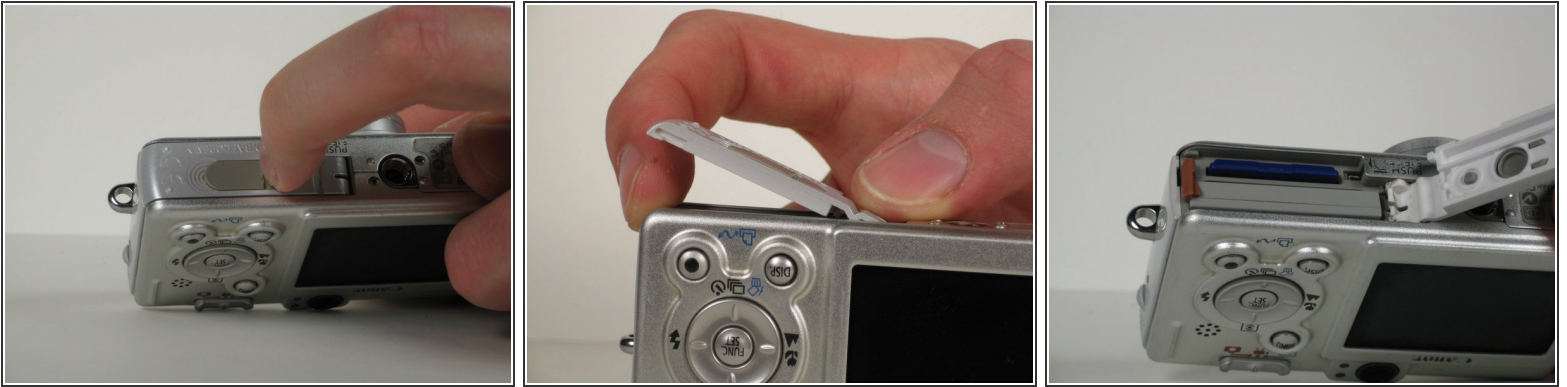
Removing the buttons might be necessary if a button is damaged. This guide will show how to remove all external buttons on the camera.



### TOOLS:

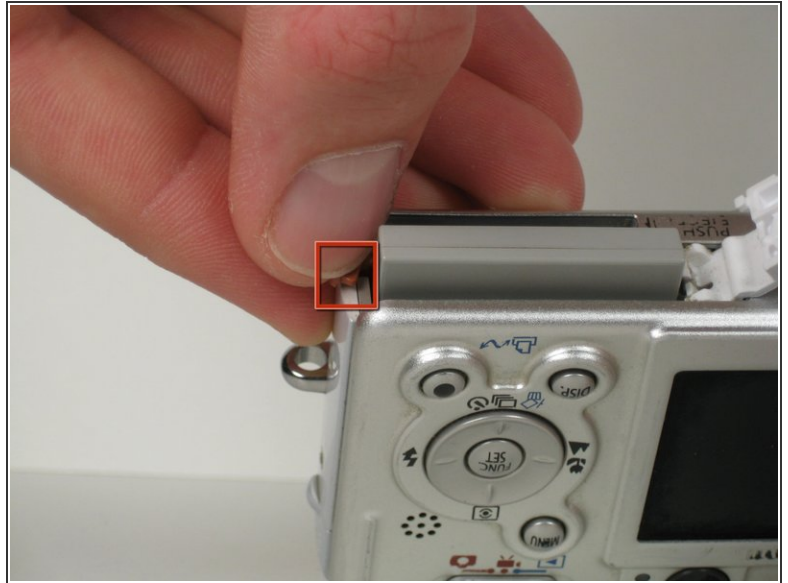
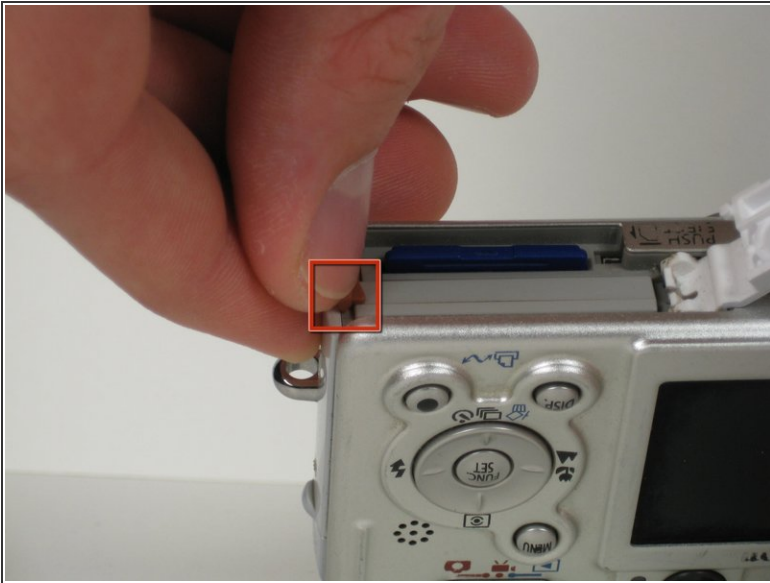
- [Phillips #00 Screwdriver](#) (1)
  - [Spudger](#) (1)
-

## Step 1 — Canon PowerShot SD200 Buttons Replacement



- i** The camera used to create these repair guides had a broken lens assembly. As a result, the lens is sticking out in all of the photos, but it is important to note that this should not be the case with your camera. The lens should retract itself back into the camera when it is turned off.
- Use your fingernail to slide the dark gray tab located on the bottom of the device towards the edge of camera.
- Slide the light gray door away from the LCD screen and pull up to open the door.
- i** Both battery and memory card should now be visible.

## Step 2



- Rotate the small brown tab towards the edge of the camera.
- The battery should pop up.

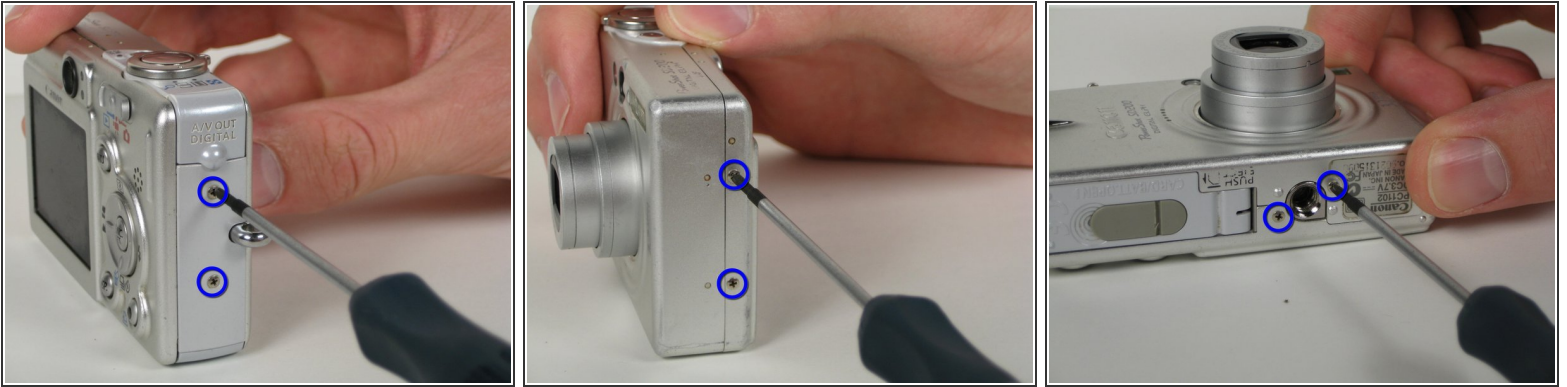
## Step 3



- Pull the battery straight out of the battery holder.
- ☑ When putting the battery back in, make sure it is orientated the same as it was before.



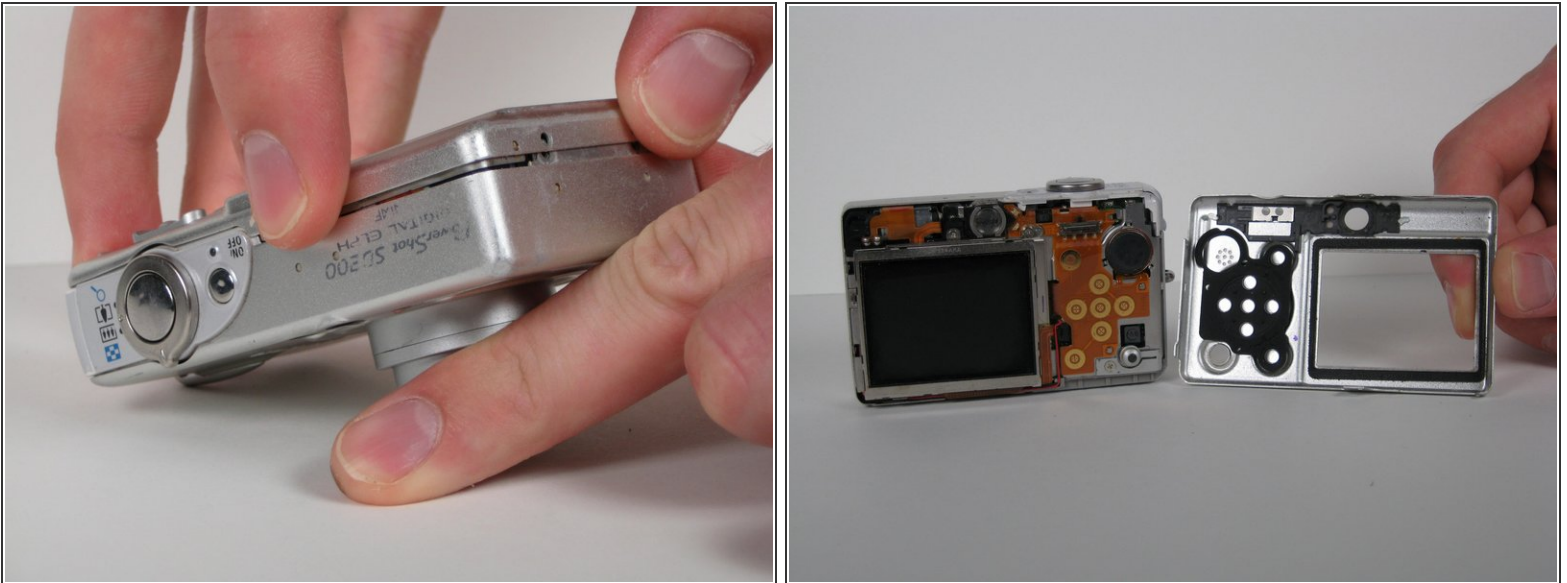
## Step 4



**i** Close light gray battery compartment door.

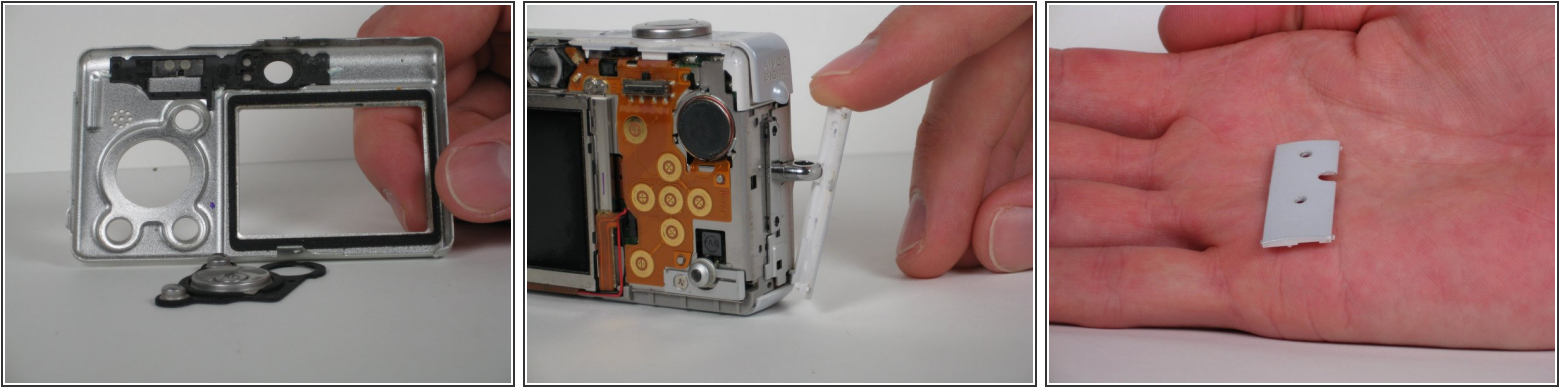
- Remove the six 2.8 mm Phillips screws on the outside of the case. Two screws are found on each side of the camera, and the final two are found on the bottom.

## Step 5



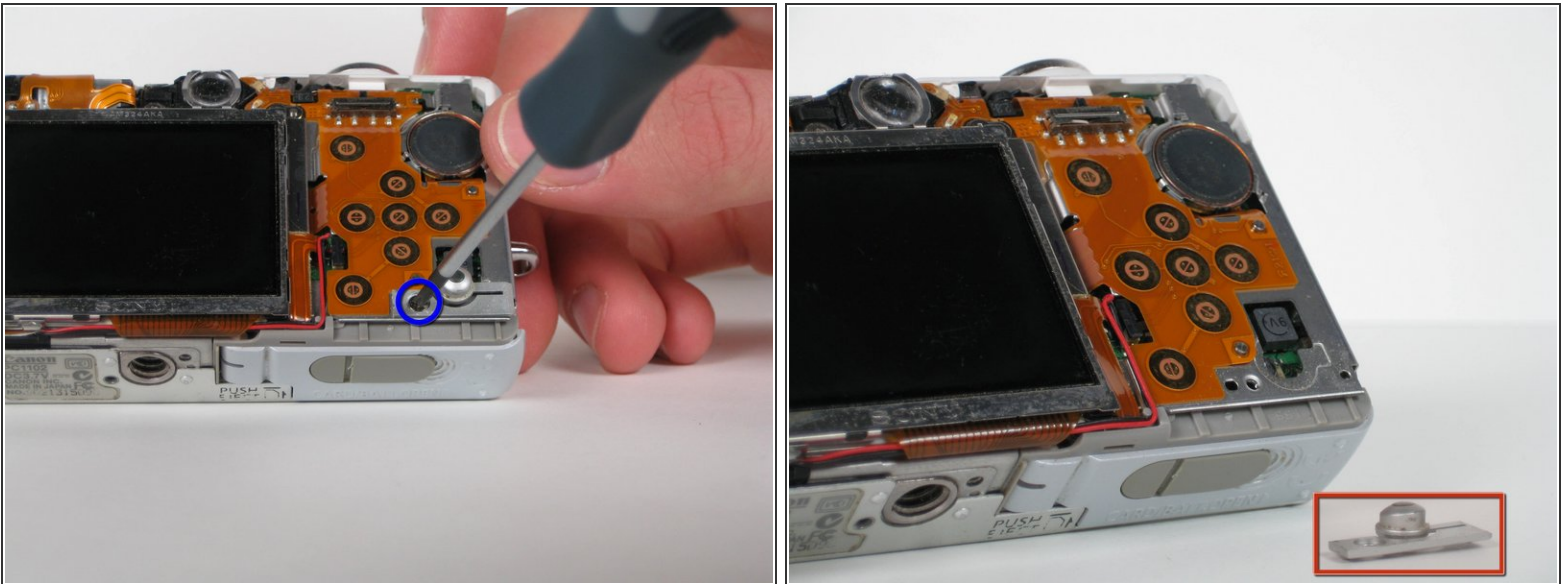
- Use your fingers to carefully pry off the back casing from the camera assembly. Casing should lift straight off.

## Step 6



- Push the buttons out with your finger if they did not fall out while removing the casing.
- Pull off the white plastic side piece if it did not fall out while removing the casing.

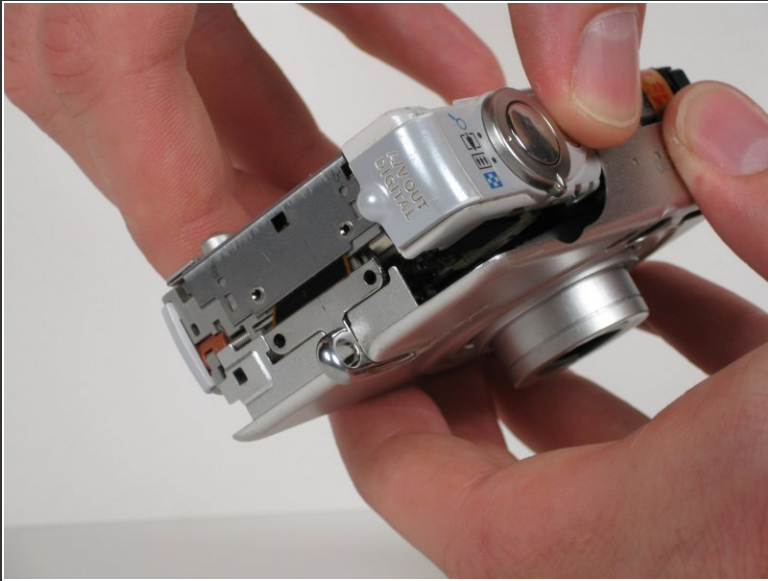
## Step 7



- Remove the one 2.2 mm Phillips screw from the bottom of the camera.
- Take off the print button.



## Step 8



- Use your fingers to carefully pry off the front casing of the camera. The front casing should pull straight off.

## Step 9



- Use the flat end of the spudger to lift open the white plastic latch on the front of the camera. Once the latch is lifted up, move the latch up towards the top edge of the camera.
- Remove the top button assembly by pulling straight up.

To reassemble your device, follow these instructions in reverse order.