



Toaster

Written By: Tobias Isakeit



INTRODUCTION



Dismantling and Recycling Centre (DRZ)

Katharina Lenz, Vienna / Austria

Health & Safety

Dismantling doesn't include any harmful steps. Nonetheless workers should wear personal protection equipment like gloves, goggles, apron and robust shoes.

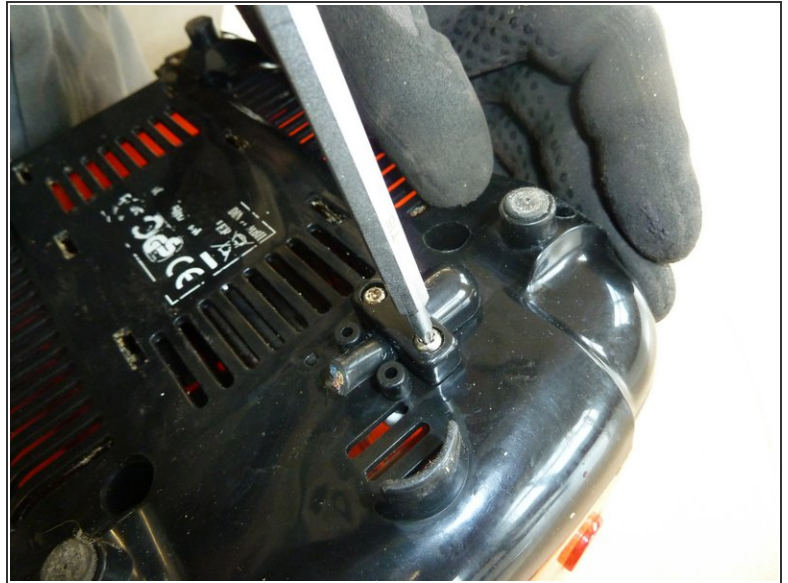
Note: This is a general guide for most toasters. As the construction can differ, the dismantling steps mentioned below can vary in their order. However, the described steps show what parts the removal should focus on.



TOOLS:

- [Several screwdrivers \(T1\)](#) (1)
- [Flathead Screwdriver \(T2\)](#) (1)
- [Side cutter \(T4\)](#) (1)
- [Industrial scale \(T9\)](#) (1)
- [Power Screw Driver \(T8\)](#) (1)

Step 1 — Toaster



- Cut the power cable. Dispose of the plug separately as mixed waste.
- Remove the screws near the power cable on the bottom side of the toaster.

Step 2



- Remove the crumb drawer.
- Bend the end of the crumb drawer to separate plastic from metal.

Step 3



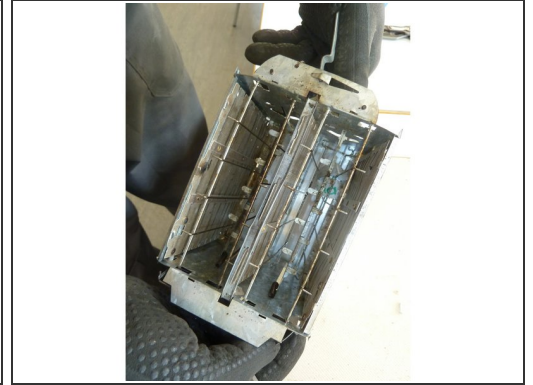
- Pry off the switch.

Step 4



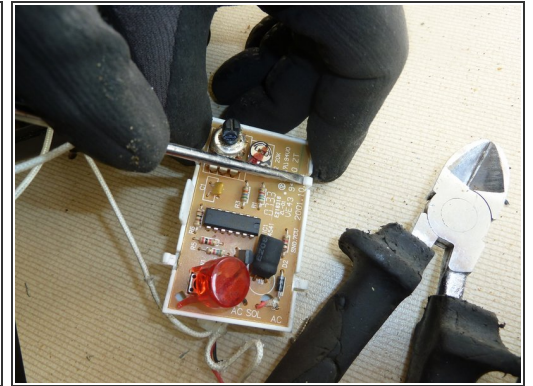
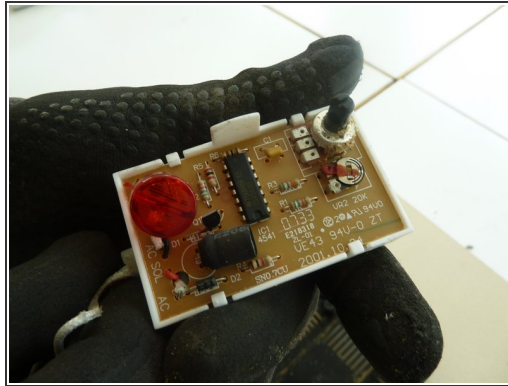
- Remove the screws from the bottom.
- Remove the bottom of the housing and take out the heating unit.

Step 5



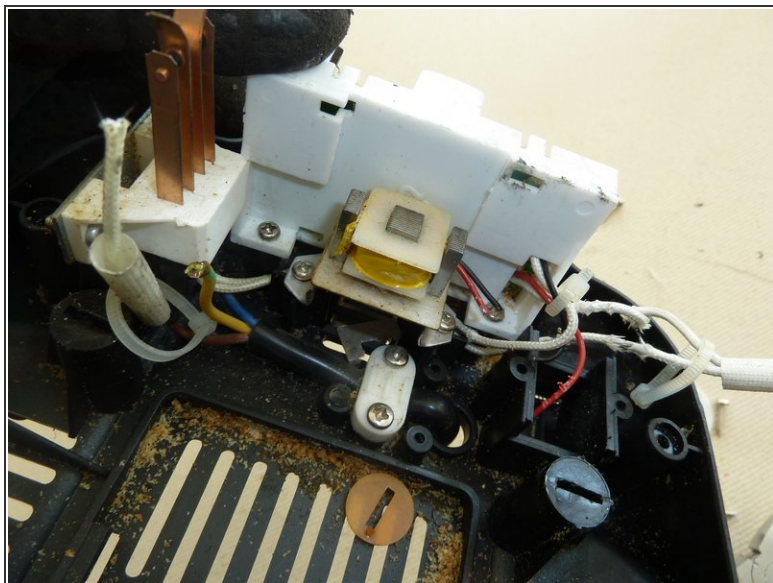
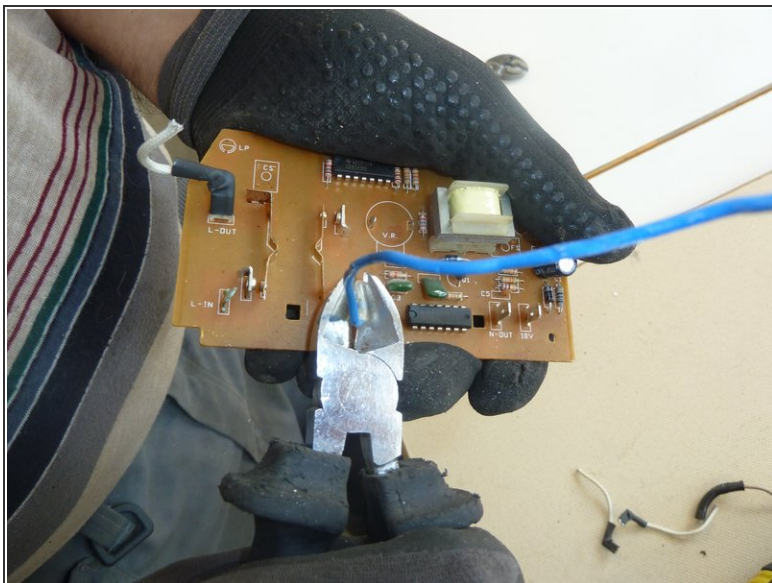
- Remove the screws connecting the heating unit and the bottom cover.
- Cut the cable of the heating unit.
- Remove the heating unit.

Step 6



- Remove the screws connecting the PWB to the housing.
- Remove the PWB.
- Remove the PWB's frame.

Step 7



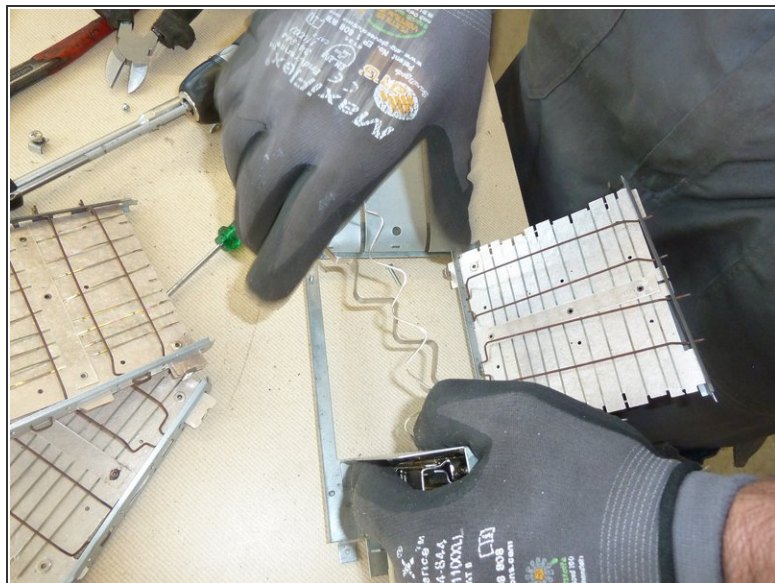
- Cut the cables of the PWB.
- Remove all the screws from the power cable fixture.

Step 8



- Remove the cover of the heating unit.

Step 9



- Remove the cardboard pieces.
- Bend open the heating unit and separate the metal.
- remove the coils from the cardboards.

Step 10



- Separate the remaining materials according to their type and go on with the appropriate data sheet (e.g. ferrous metals, plastic, further PWBs, etc.)
- Make sure the plastic parts are completely free of metal pieces.