



Lawn Edge Trimmer

Written By: Tobias Isakeit



INTRODUCTION



Dismantling and Recycling Centre (DRZ)

Katharina Lenz, Vienna / Austria

Health & Safety

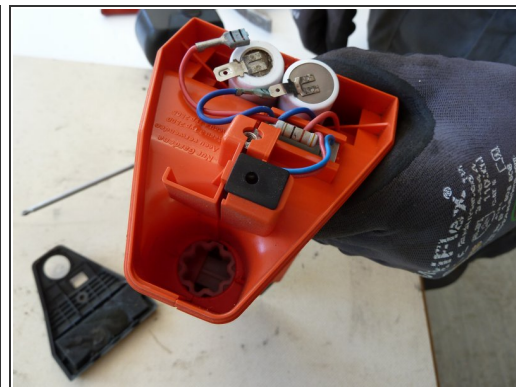
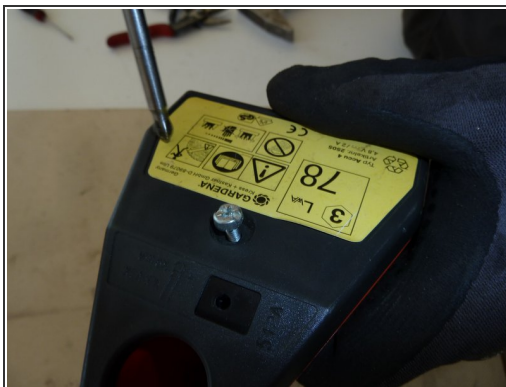
Dismantling doesn't include any harmful steps. Nonetheless workers should wear personal protection equipment like gloves, goggles, apron and robust shoes.

Note: This is a general guide for most lawn edge trimmers. As the construction can differ, the dismantling steps mentioned below can vary in their order. However, the described steps show what parts the removal should focus on.

TOOLS:

- [Several screwdrivers \(T1\)](#) (1)
 - [Side cutter \(T4\)](#) (1)
 - [Industrial scale \(T9\)](#) (1)
 - [Power Screw Driver \(T8\)](#) (1)
-

Step 1 — Lawn Edge Trimmer



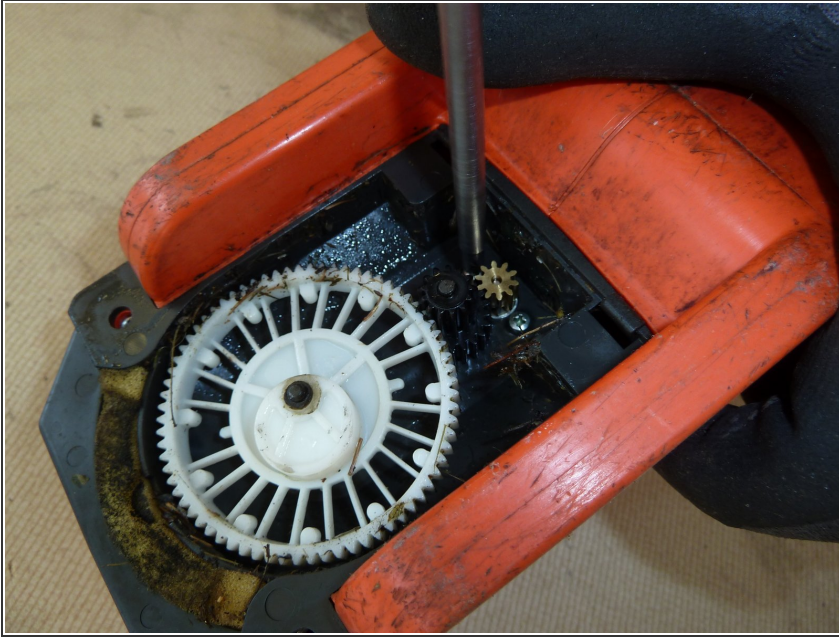
- Unscrew and open the case.

Step 2



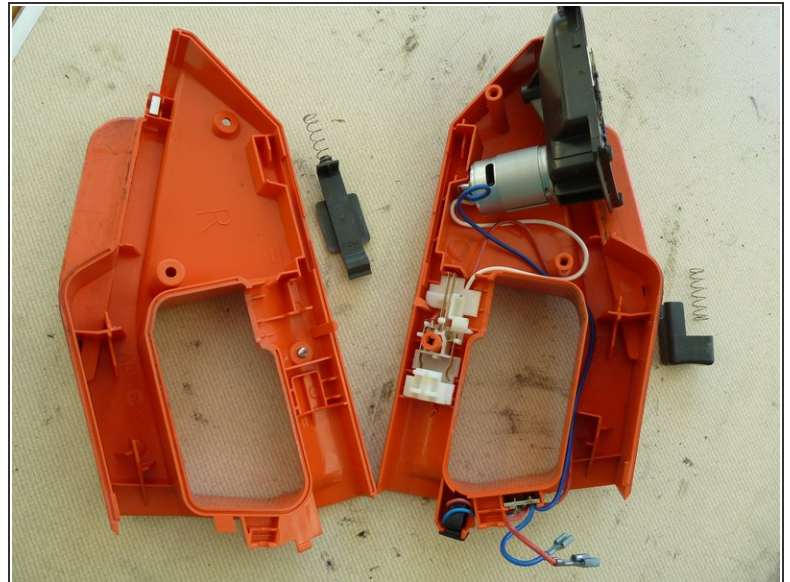
- Remove the batteries.
- Unscrew the blade.

Step 3



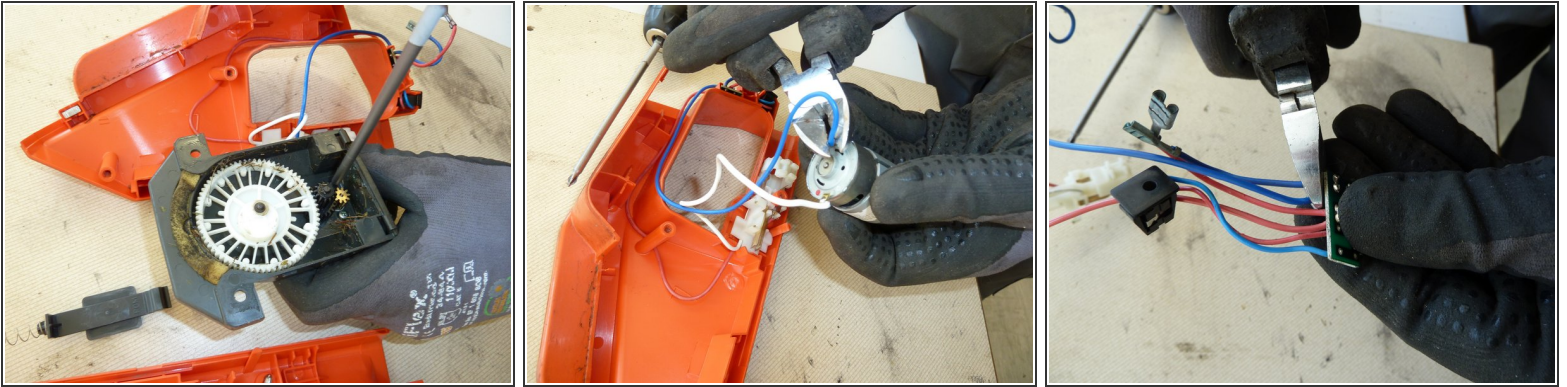
- Unscrew the gear case.

Step 4



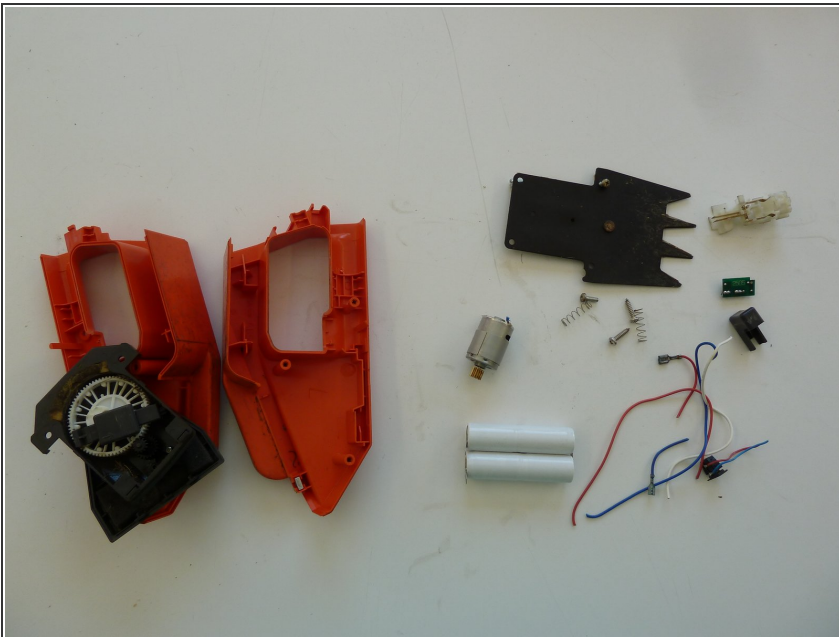
- Unscrew and open the outer case.

Step 5



- Remove the motor.
- Cut off the wires of the motor and the PWB.

Step 6



- Separate the remaining materials according to their type and go on with the appropriate data sheet (e.g. aluminium, ferrous metals, plastic, further PWBs, etc.).
- Make sure the plastic parts are completely free of metal pieces.