



Power Screwdriver (with inbuilt battery pack)

Written By: Tobias Isakeit



INTRODUCTION



Dismantling and Recycling Centre (DRZ)

Katharina Lenz, Vienna / Austria

Health & Safety

Dismantling doesn't include any harmful steps. Nonetheless workers should wear personal protection equipment like gloves, goggles, apron and robust shoes.

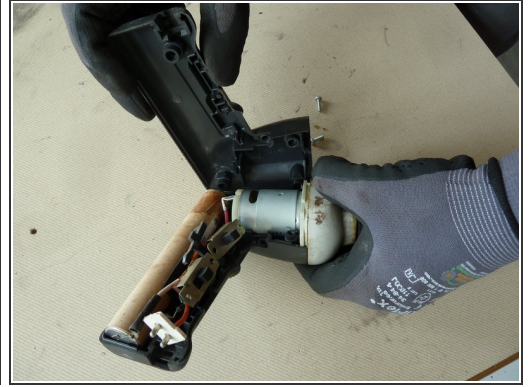
Note: This is a general guide for most power screwdrivers (with inbuilt battery pack). As the construction can differ, the dismantling steps mentioned below can vary in their order. However, the described steps show what parts the removal should focus on.



TOOLS:

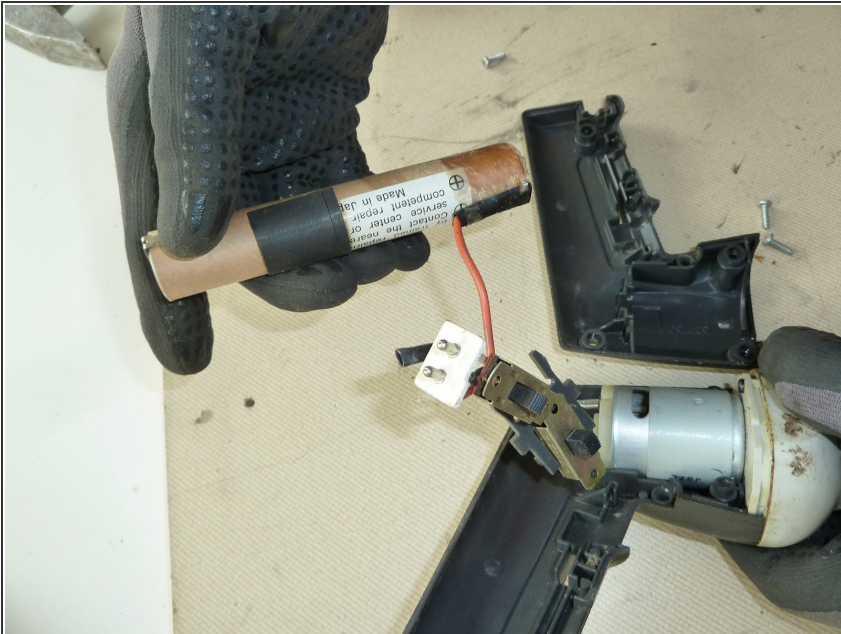
- [Several screwdrivers \(T1\)](#) (1)
- [Flathead Screwdriver \(T2\)](#) (1)
- [Side cutter \(T4\)](#) (1)
- [Hammer \(T3\)](#) (1)
- [Industrial scale \(T9\)](#) (1)
- [Power Screw Driver \(T8\)](#) (1)

Step 1 — Power Screwdriver (with inbuilt battery pack)



- Unscrew the case.
- If you can't open it already, hammer open the bottom of the handle
- Open the case.

Step 2



- Remove the batteries.

Step 3



- Cut the wires.

Step 4



- Unscrew the motor.

Step 5



- Unscrew and remove the motor.

Step 6



- Open the drive.

Step 7



- Separate the remaining materials according to their type and go on with the appropriate data sheet (e.g. aluminium, ferrous metals, plastic, further PWBs, etc.).
- Make sure the plastic parts are completely free of metal pieces.