



Server

Written By: Tobias Isakeit



INTRODUCTION



Dismantling and Recycling Centre (DRZ)

Katharina Lenz, Vienna / Austria

Health & Safety

Dismantling doesn't include any harmful steps. Nonetheless workers should wear personal protection equipment like gloves, goggles, apron and robust shoes.

Note: This is a general guide for most servers. As the construction can differ, the dismantling steps mentioned below can vary in their order. However, the described steps show what parts the removal should focus on.



TOOLS:

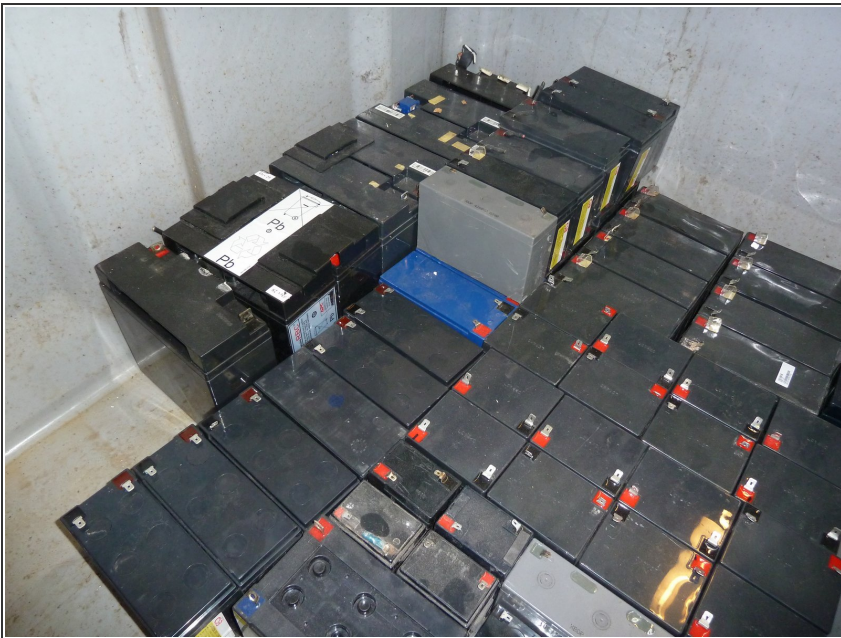
- [Several screwdrivers \(T1\)](#) (1)
- [Flathead Screwdriver \(T2\)](#) (1)
- [Hammer \(T3\)](#) (1)
- [Side cutter \(T4\)](#) (1)
- [Pliers \(T5\)](#) (1)
- [Industrial scale \(T9\)](#) (1)

Step 1 — Server



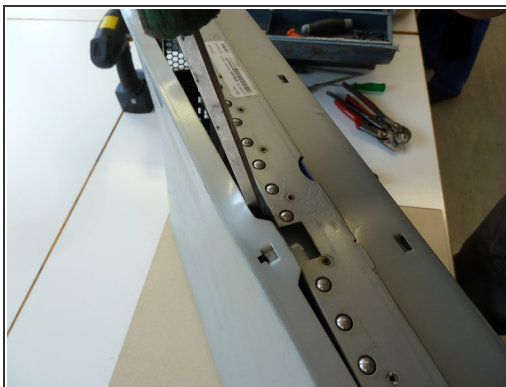
- Remove the batteries.

Step 2



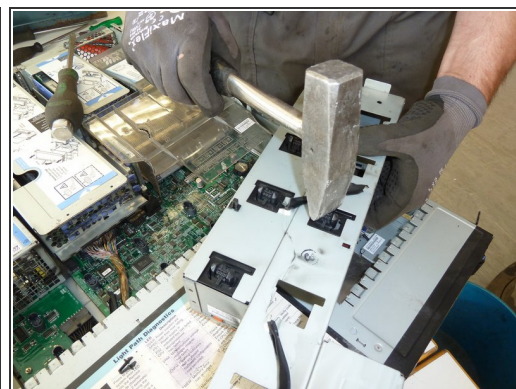
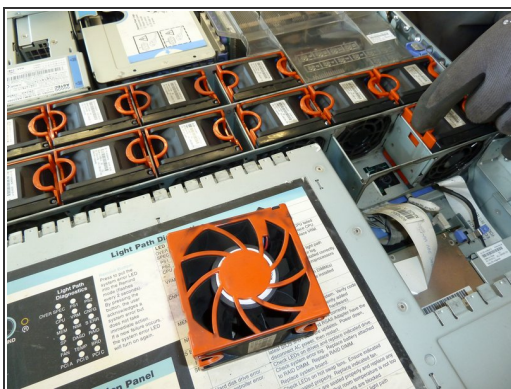
- Store the lead batteries safely.

Step 3



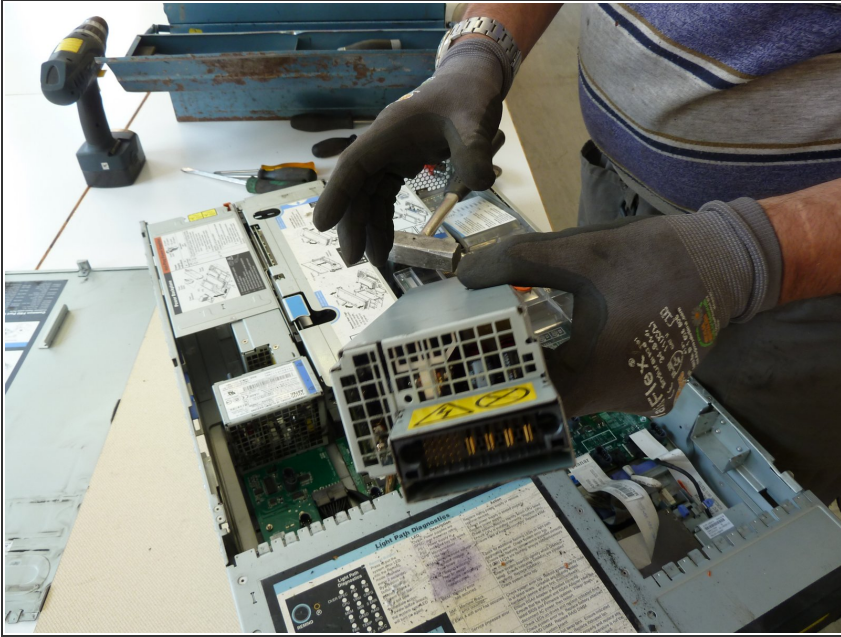
- Open the case.

Step 4



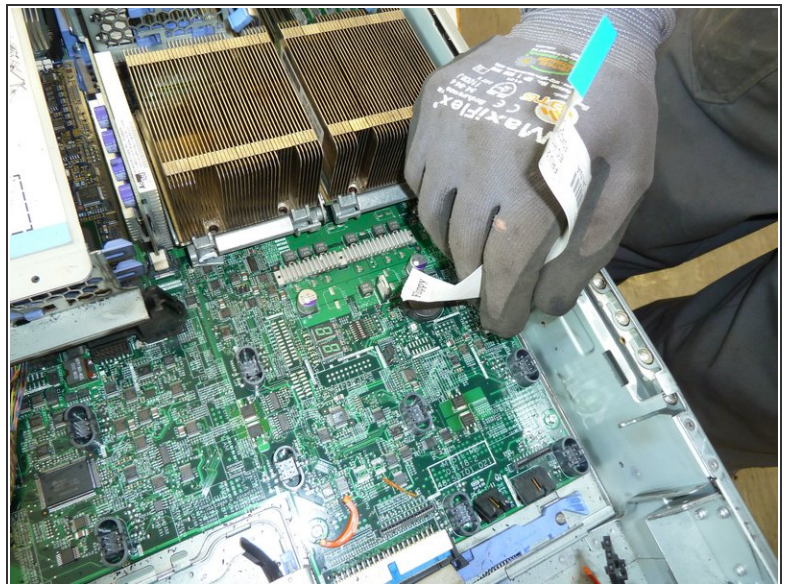
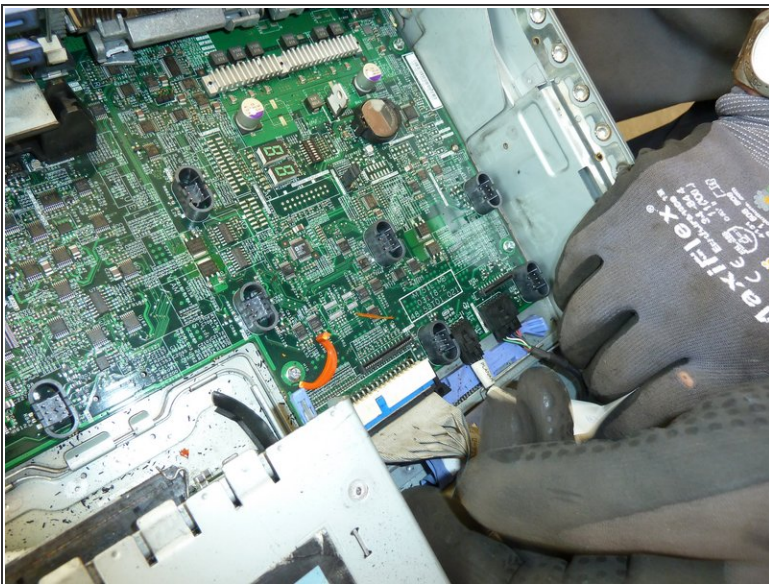
- Remove the cooling fans.
- If the fans don't come out easily, hammer them out.

Step 5



- Remove the power supply element.

Step 6



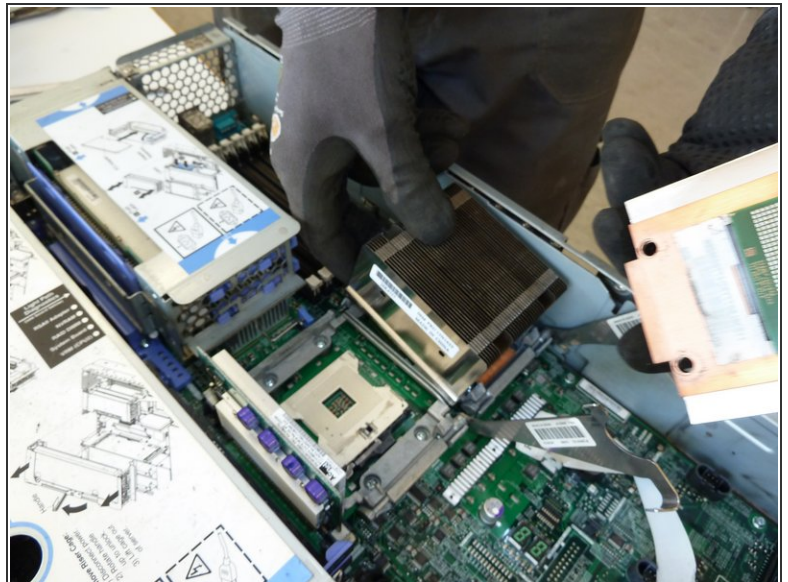
- Unplug and remove the wires.

Step 7



- Unscrew and remove the electronic parts.

Step 8



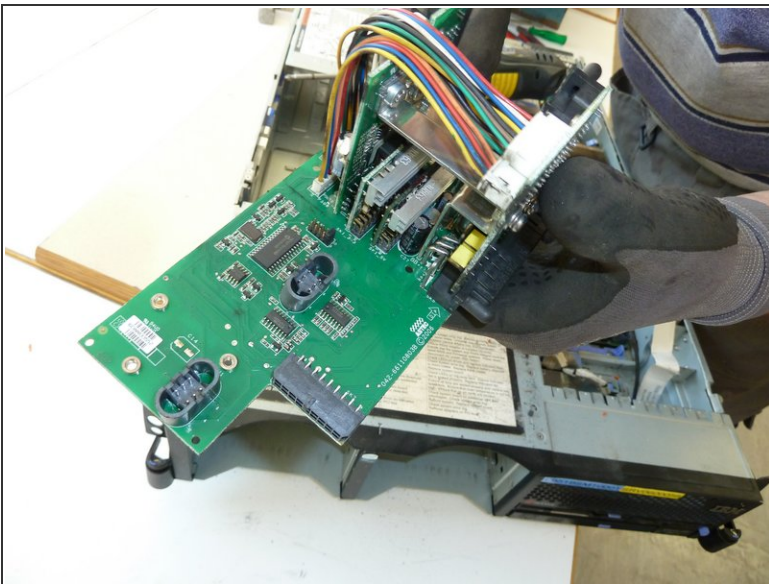
- Remove the aluminium heat sinks.

Step 9



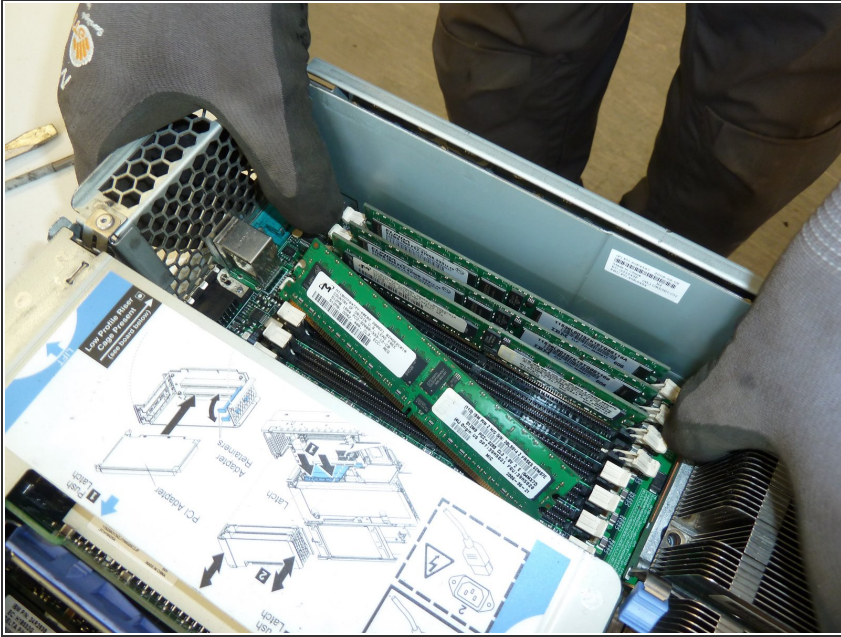
- Unscrew the electronics.

Step 10



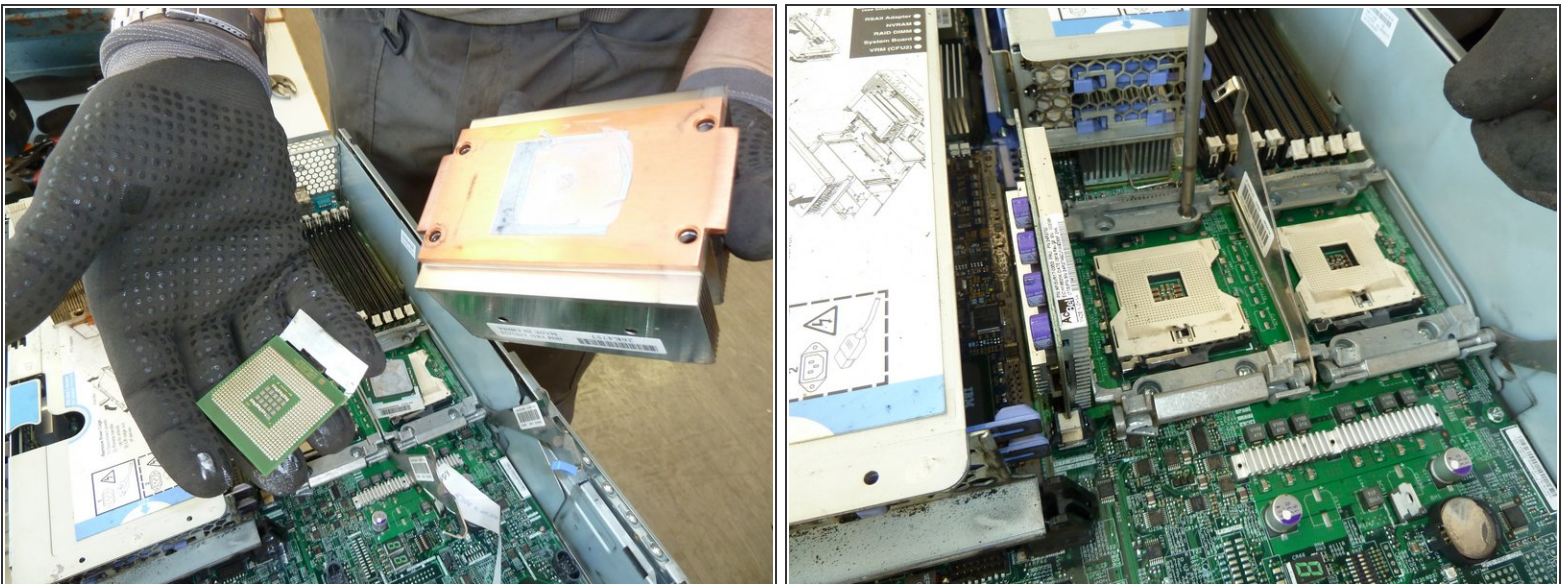
- Cut the wires off the electronics.

Step 11



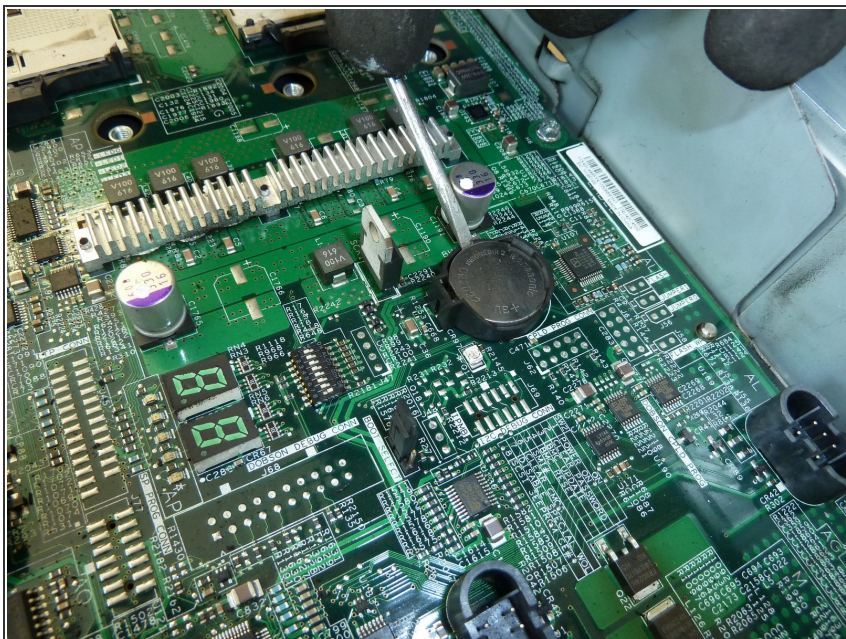
- Remove the RAMs.

Step 12



- Remove the CPUs.

Step 13



- Pry out the cmos battery.

Step 14



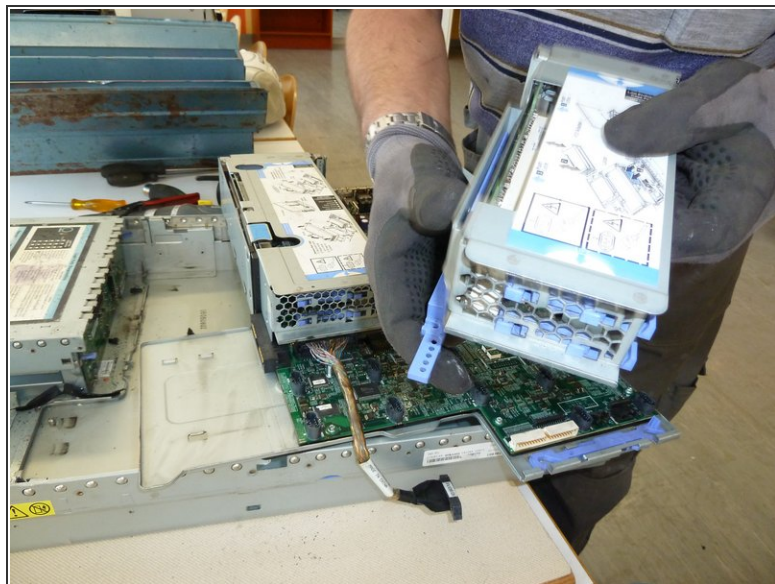
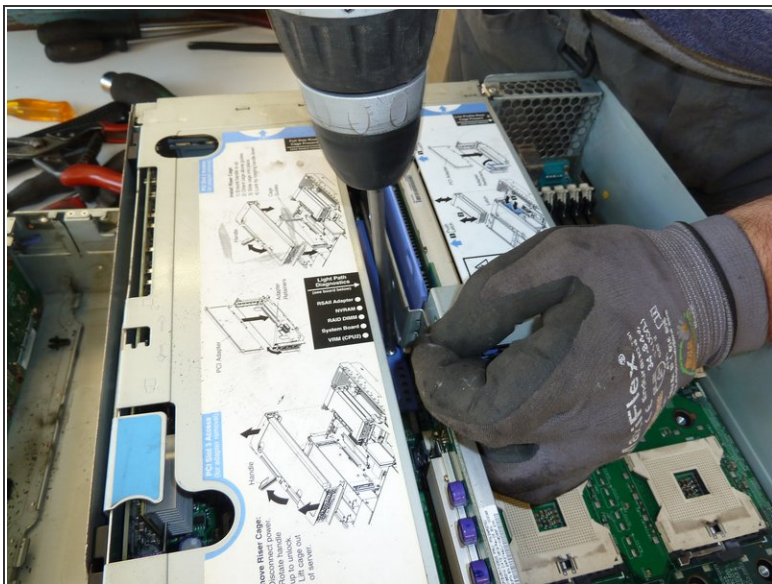
- Unclip the wires.

Step 15



- Remove the disk drives.

Step 16



- Unscrew the mount.
- Remove the battery cases.

Step 17



- Remove the aluminium parts.

Step 18



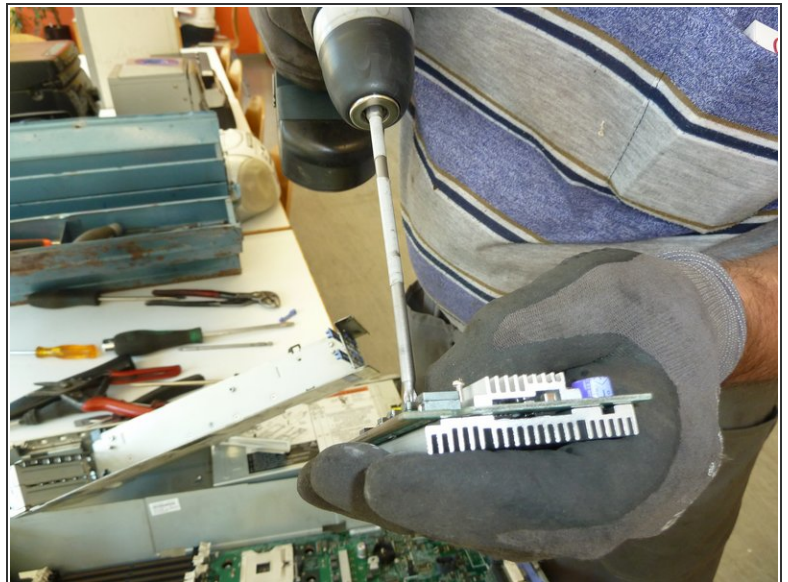
- Unscrew the PWB.

Step 19



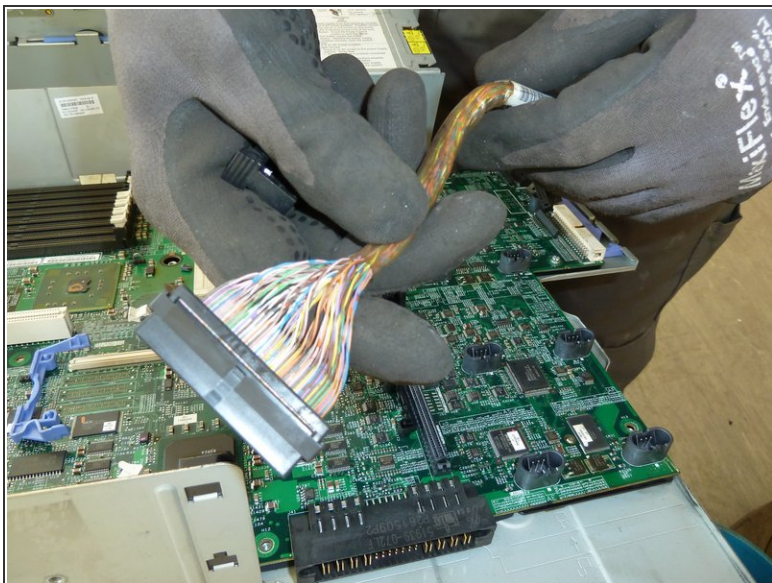
- Remove the metal parts.

Step 20



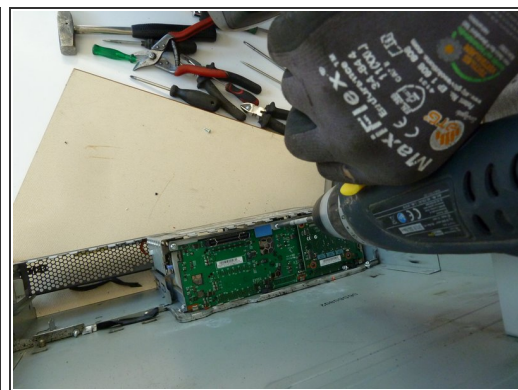
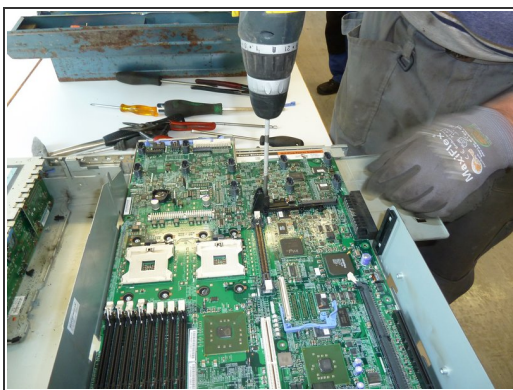
- Unscrew the aluminium parts.

Step 21



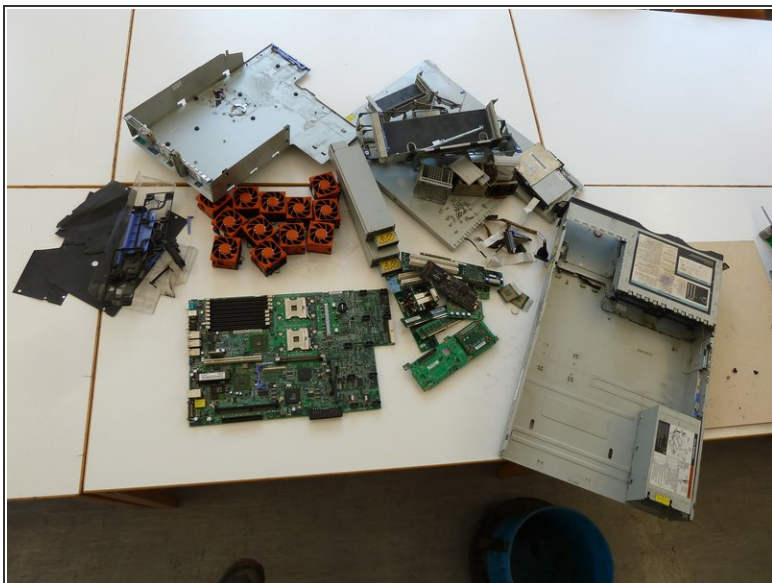
- Remove the wires.
- Unscrew the plugs.

Step 22



- Remove all the plastic parts.
- Remove the PWB.

Step 23



- Separate the remaining materials according to their type and go on with the appropriate data sheet (e.g. aluminium, ferrous metals, plastic, further PWBs, etc.).
- Make sure the plastic parts are completely free of metal pieces.