



Game Boy Advance Shoulder Button and Side Panels Replacement

Written By: Dozuki System



INTRODUCTION

Use this guide for disassembly and for resolving jammed or finicky shoulder buttons.



TOOLS:

- [Phillips #1 Screwdriver](#) (1)
 - [Tri-point Y0 Screwdriver](#) (1)
-

Step 1 — Game Boy Advance Shoulder Button and Side Panels Replacement



- Take the battery cover off by releasing the locking tab and hinging the cover away.

Step 2



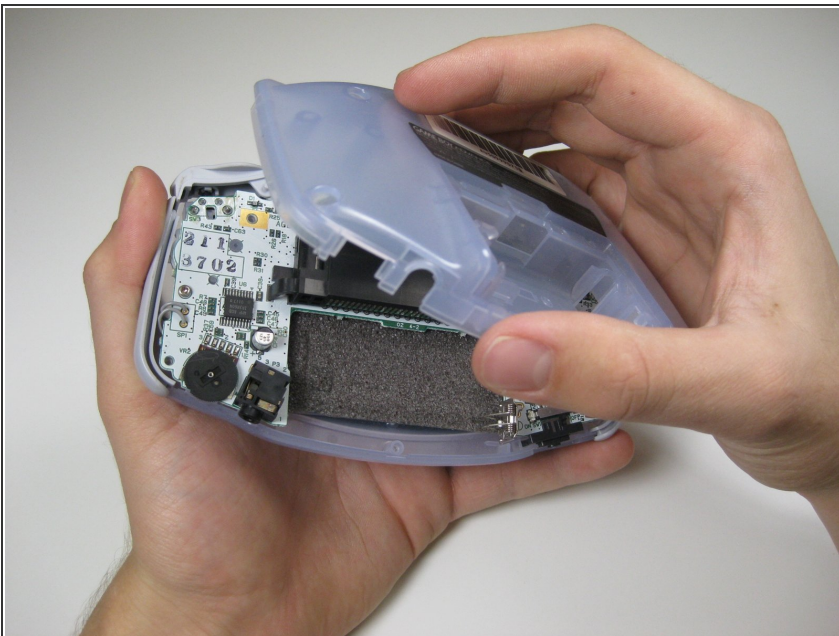
- Remove the six back panel screws using a Tri-wing Screwdriver.

Step 3



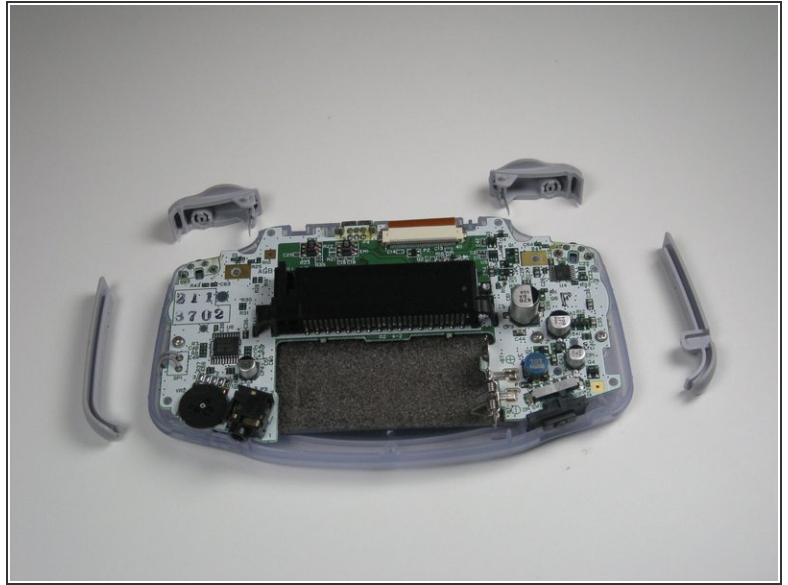
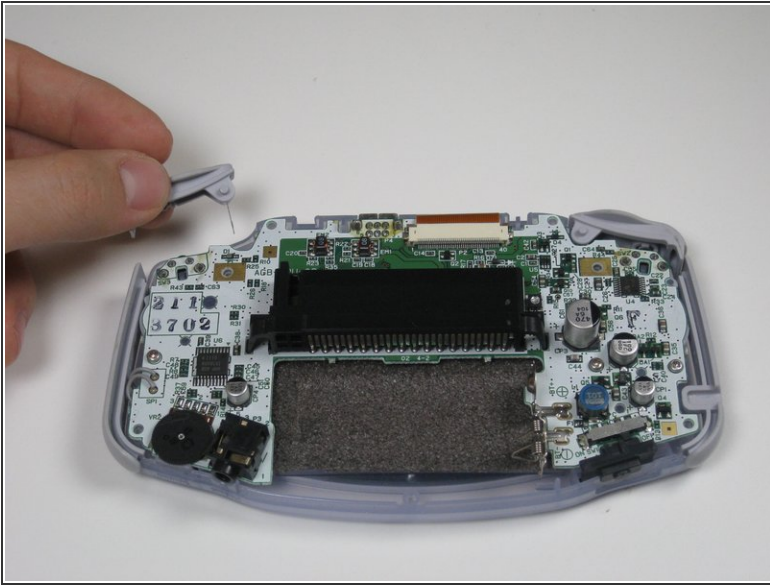
- Remove bottom back panel screw with a Phillips #1 screw driver.

Step 4



- Remove the back panel by pulling away with one hand and the front secured in the other hand.
- ⚠ Removal of the back panel may cause shoulder buttons and side panels to come loose and fall off.

Step 5



- Remove left and right triggers by lifting and pulling them away from the system.
- Do the same for side panels
- ⓘ For finicky or jammed triggers only. Adjust and correct triggers and reassemble. Most jammed triggers are caused by buttons misplaced or jammed in its enclosure.

To reassemble your device, follow these instructions in reverse order.