



Game Boy Advance LCD Screen Replacement

Written By: Dozuki System



INTRODUCTION

Use this guide to remove the LCD screen from the Game Boy Advance.



TOOLS:

- [Phillips #1 Screwdriver](#) (1)
 - [Spudger](#) (1)
 - [Tri-point Y0 Screwdriver](#) (1)
-

Step 1 — Game Boy Advance LCD Screen Replacement



- Take the battery cover off by releasing the locking tab and hinging the cover away.

Step 2



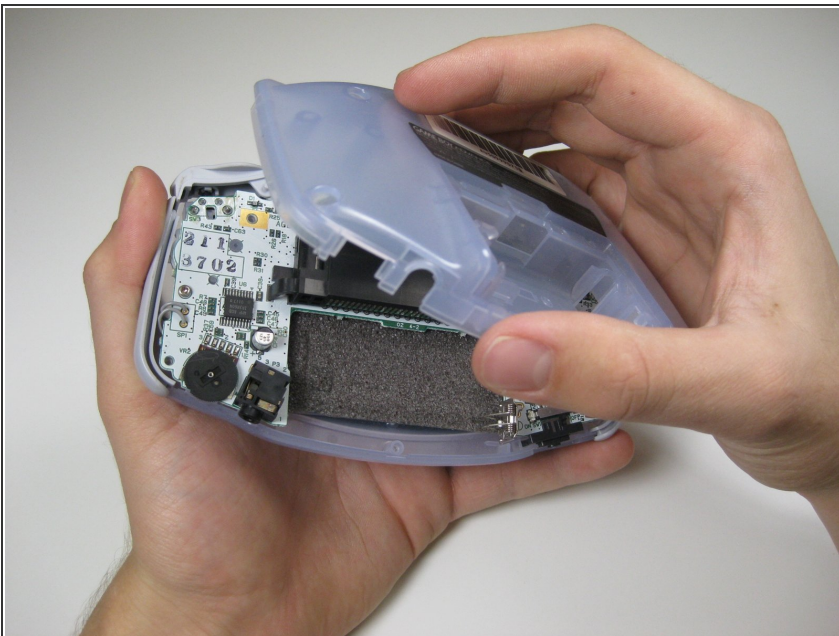
- Remove the six back panel screws using a Tri-wing Screwdriver.

Step 3



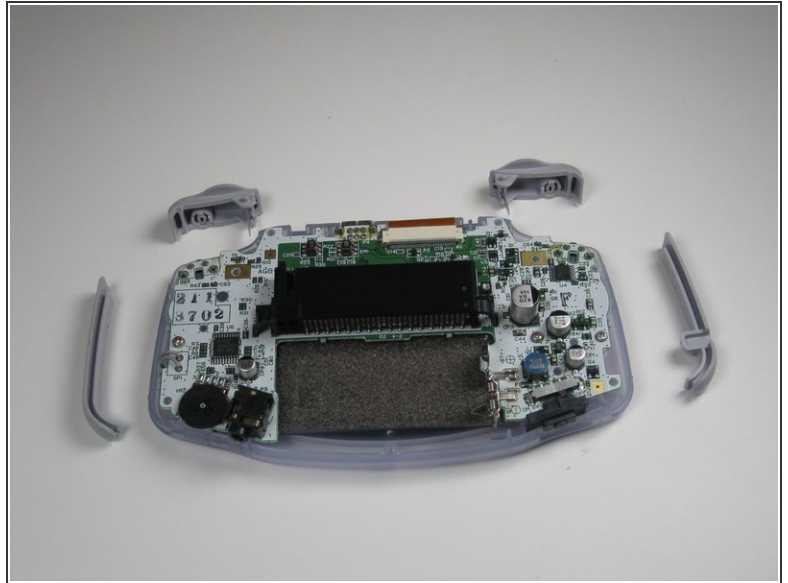
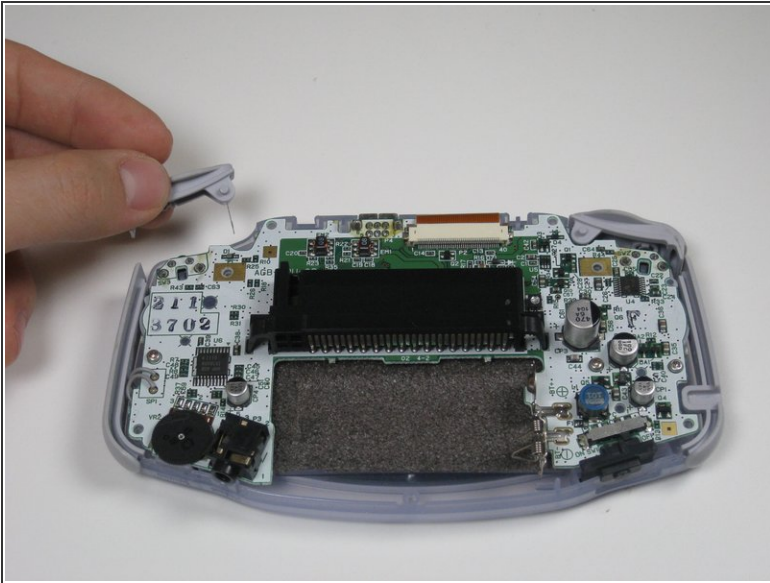
- Remove bottom back panel screw with a Phillips #1 screw driver.

Step 4



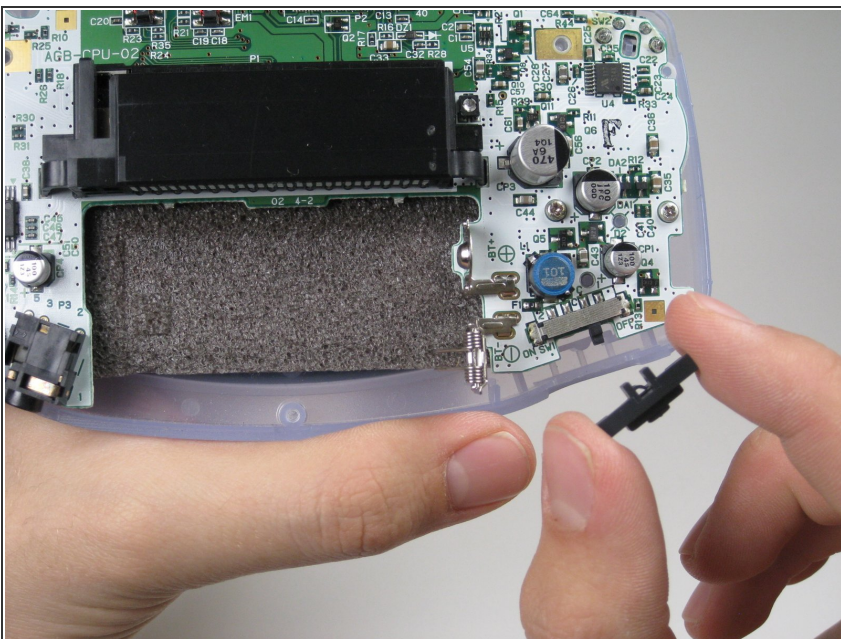
- Remove the back panel by pulling away with one hand and the front secured in the other hand.
- ⚠ Removal of the back panel may cause shoulder buttons and side panels to come loose and fall off.

Step 5



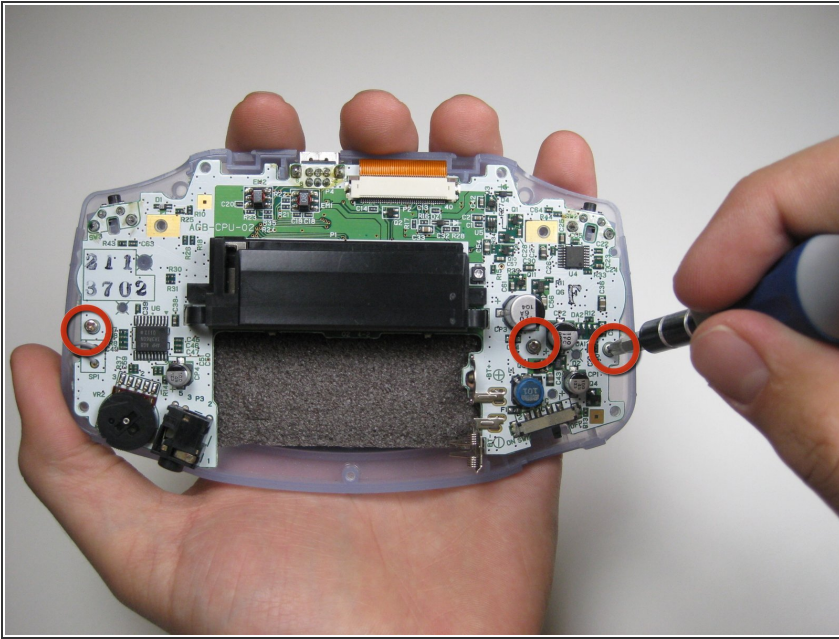
- Remove left and right triggers by lifting and pulling them away from the system.
- Do the same for side panels
- ❗ For finicky or jammed triggers only. Adjust and correct triggers and reassemble. Most jammed triggers are caused by buttons misplaced or jammed in its enclosure.

Step 6



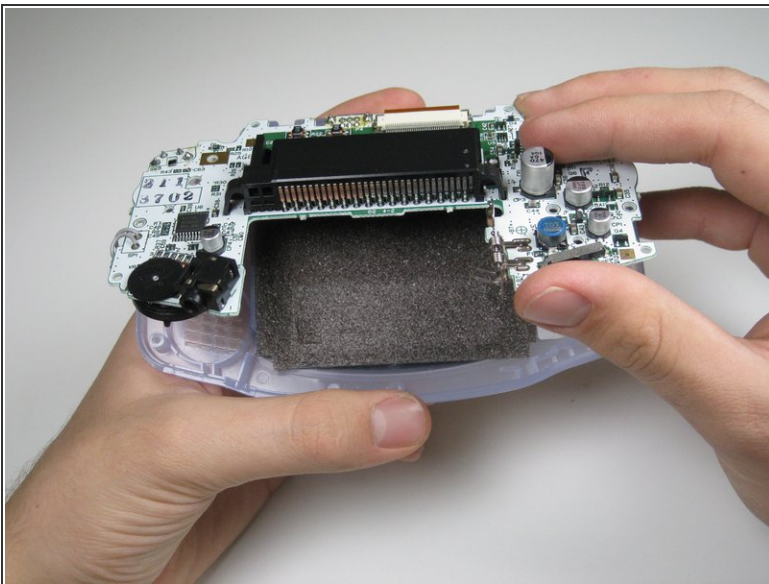
- Remove the gray On/Off Switch by pulling up and away from the unit. Replace with another switch if necessary.

Step 7



- Remove the three screws on the circuit board with a Phillips #1 screw driver.

Step 8



- Pull circuit board away from the front panel by pulling up at the bottom of the circuit board, keeping the top ribbon still connected.

⚠ Handle with care! The ribbon connecting the circuit board to the LCD screen can easily be damaged and will require replacement if broken.

Step 9



- Remove the rubber button pads from their pockets.
- Remove the plastic buttons and the D-pad from beneath the rubber pads with tweezers or by hand.

Step 10



- Carefully note the brown colored locking bar that shims the ribbon cable in it's housing so it cannot slip.
- Using a nylon stick (or some other ESD safe probe) *gently* push both sides of the locking bar up.
- Now the ribbon cable should move freely. A careful prod using your nylon spudger should be able to free the cable. *This should **barely** require any force at all.* Otherwise, check that the locking bar is fully disengaged.

Step 11



- Use the spudger to lift the screen from the front panel. Place the spudger in the space directly left of the D-pad.

⚠ The screen and the front panel is connected by a black tape that could rip if not removed carefully.

To reassemble your device, follow these instructions in reverse order.