



# Samsung Galaxy Note 10.1

This manual will guide you through the disassembly of a Samsung Galaxy 10.1 and removal of battery, mainboard and display.

Written By: Paul

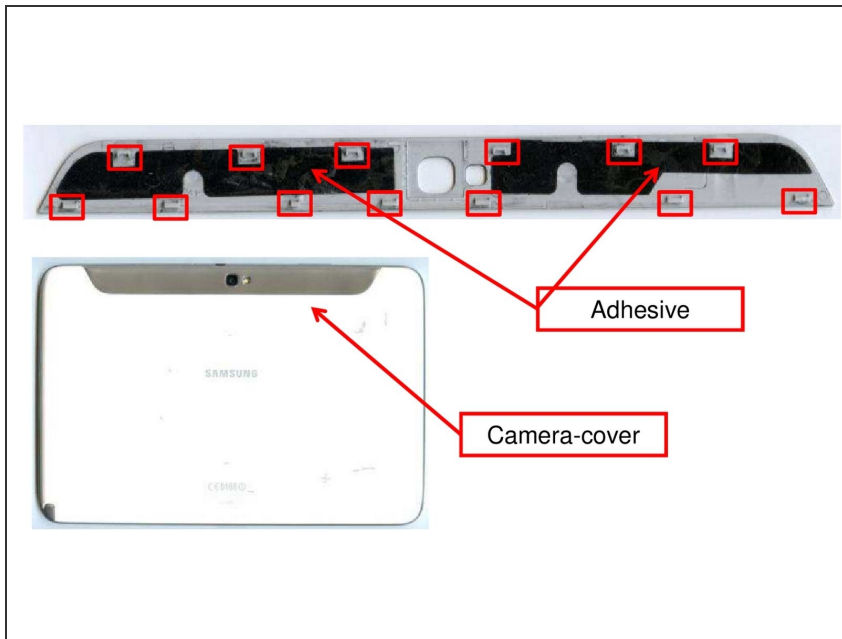




## TOOLS:

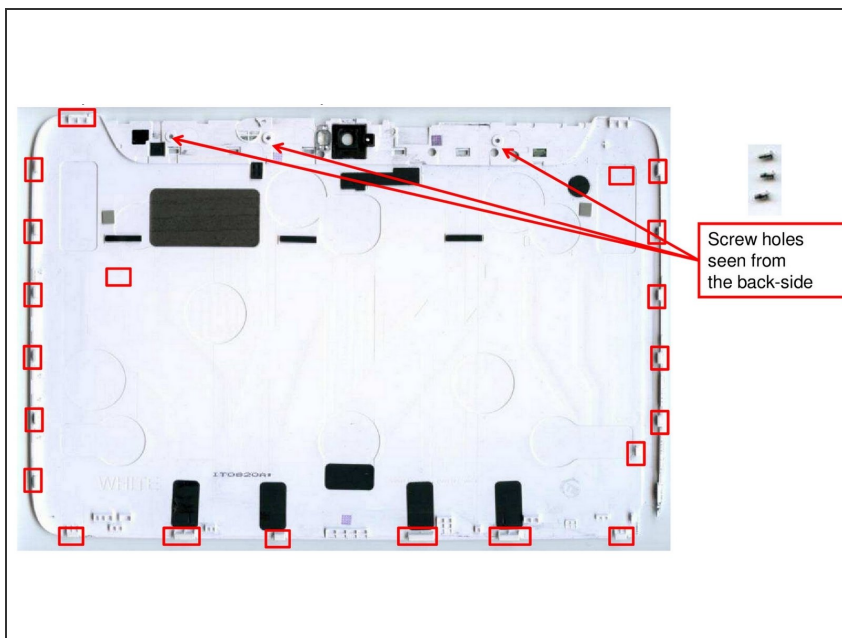
- [Screw Driver Phillips #00](#) (1)
- [Lever Tool](#) (1)
- [Tweezers](#) (1)

## Step 1 — Removal of camera-cover



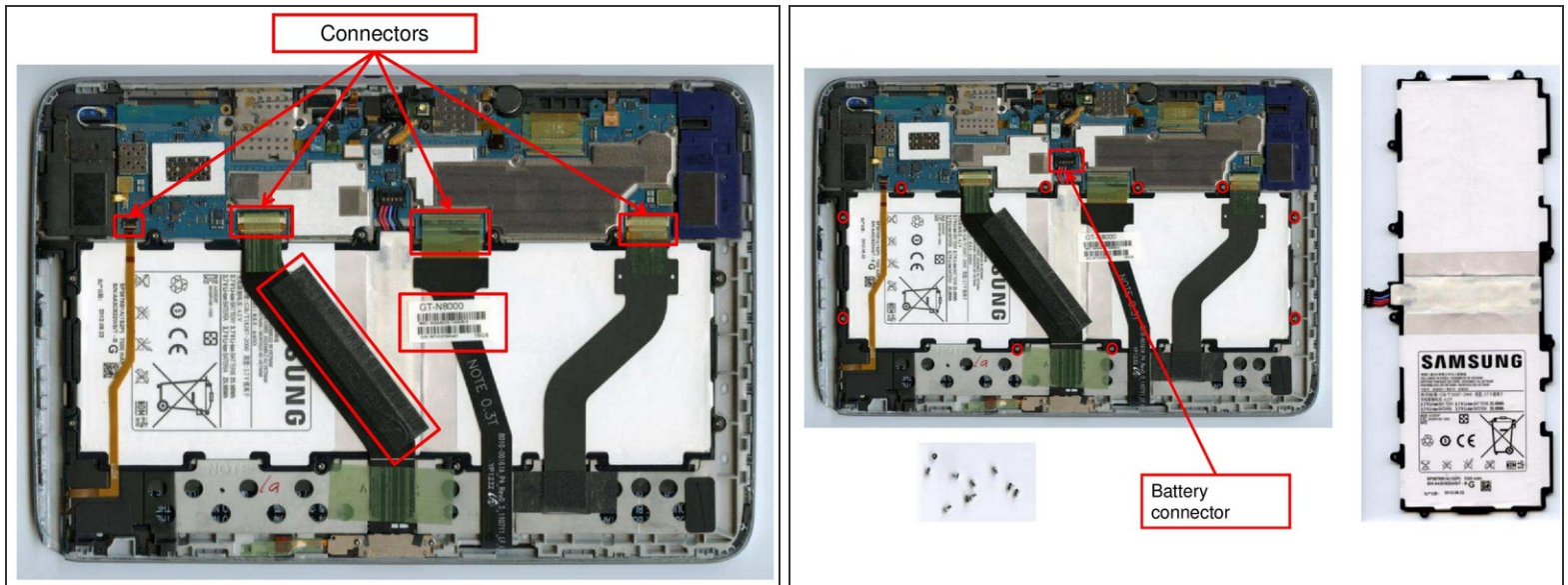
- Carefully remove the camera-cover. It is levered with a metal-spattle and attached with adhesive tape.

## Step 2 — Removal of Back-Cover



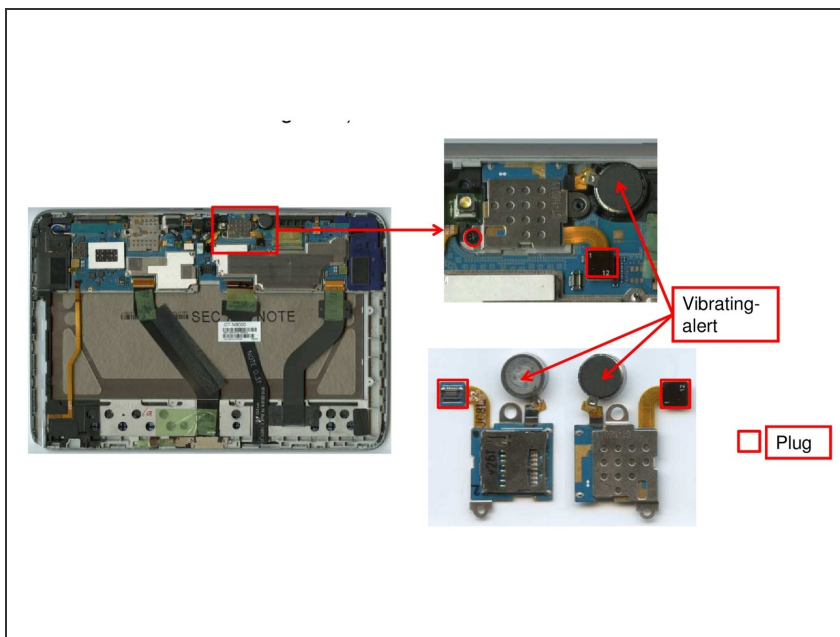
- Remove **3 screws** from below the camera cover and carefully open the **20 clips** that are used to attach the back-cover to the main body.

### Step 3 — Unplugging of Ribbon Cables and Battery Connector



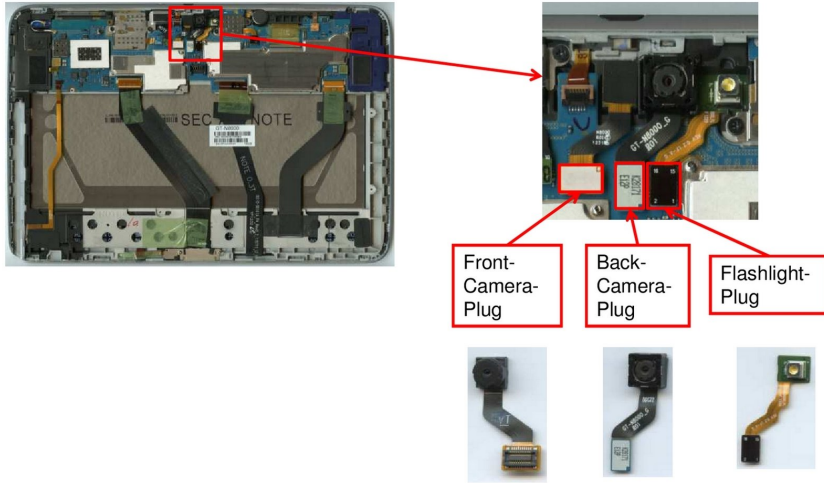
- Next, you may remove the **4 screws** that hold the battery fixed to the mainboard.
- Carefully disconnect the **four ribbon cables** and pull off the **2 adhesives** that hold down the wirings.
- Now, you can remove the battery.

### Step 4 — Removal of Micro-SD-Card-Reader and Vibrating-Alert-Unit



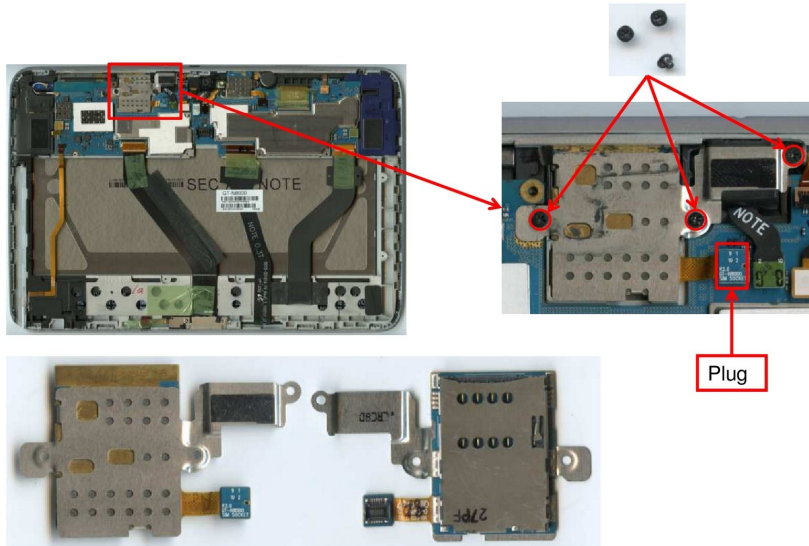
- Carefully unscrew the screw that holds down the uSD-Card Reader, unplug the device. The Vibrating-Alert may be fixed with adhesives.

## Step 5 — Removal of Camera and Flashlight



- Carefully unplug the camera connectors from the mainboard and remove the cameras from their mounting. They may be attached by adhesives.

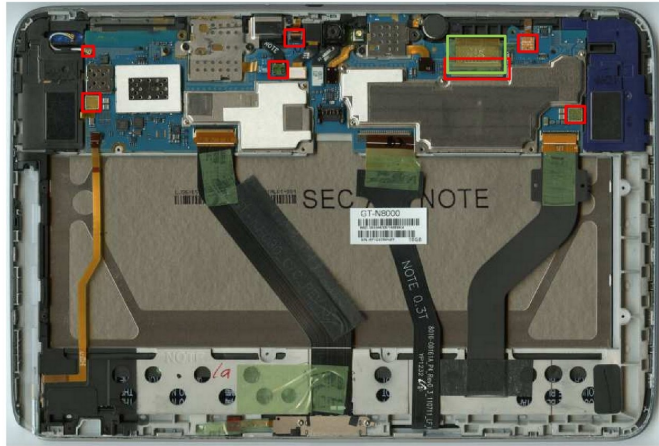
## Step 6 — Removal of SIM-Card-Reader



- Carefully remove the **3 screws** that attach the SIM-Card-Reader to the Mainboard. Detach the plug. remove the Card-Reader

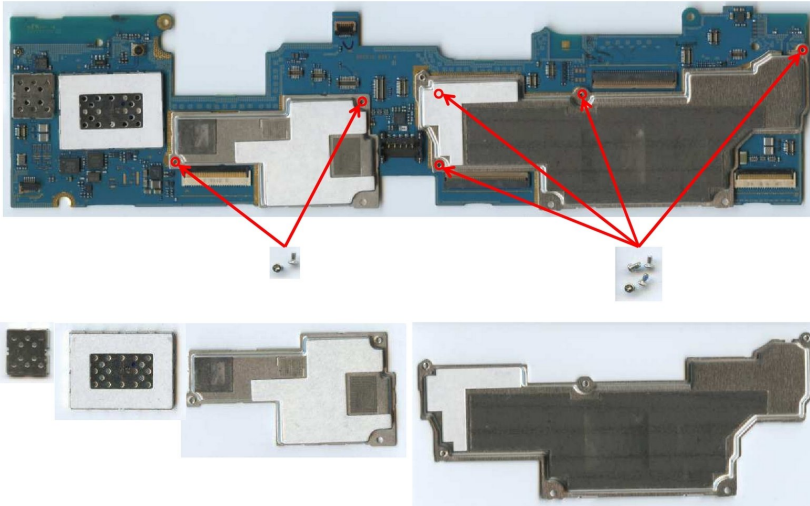


## Step 7 — Removal of Mainboard



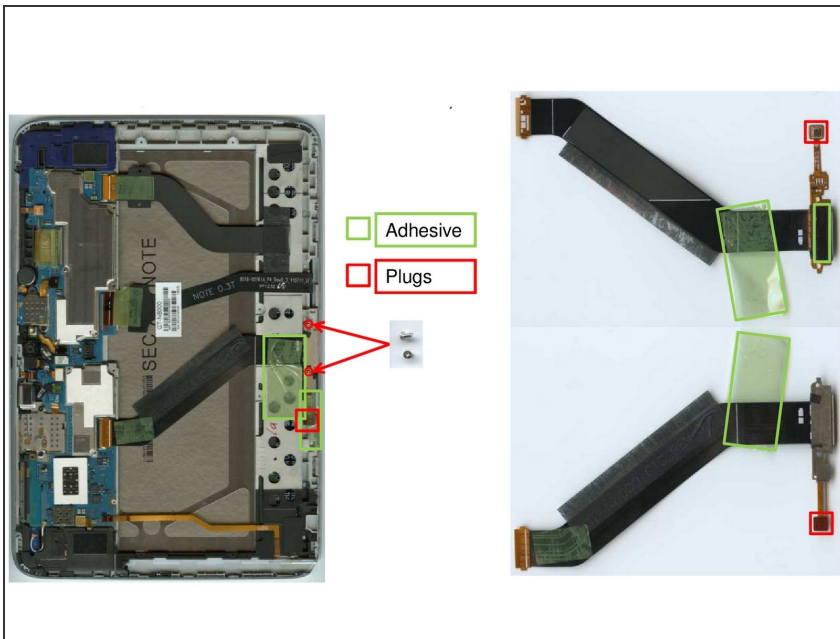
- In order to remove the mainboard, **7 plugs** must be loosened and the adhesive displayed in the graphic must be pulled off. The Mainboard can now be removed.

## Step 8 — Removal of EMI Shield



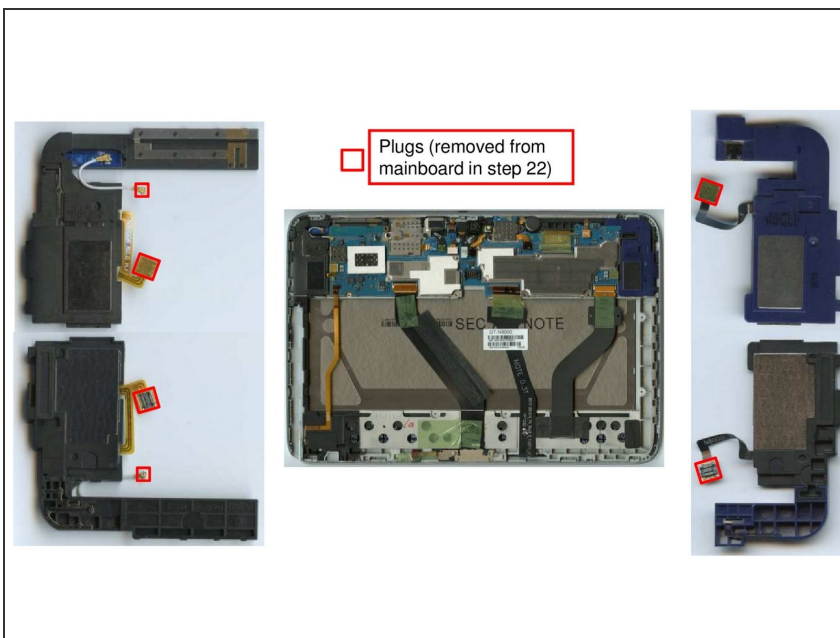
- To remove the EMI-Shields, it is necessary to remove **4 screws** from the back of the device. You can now lift off the EMI Shield. In order to remove the small Shield, **2 more screws** need to be removed. After this the shields can be removed.

## Step 9 — Removal of Dock-Connector



- The connectors may now be removed by detaching the adhesives under the cables and unplugging the two plugs.
- In Order to remove the dock connector first two screws from the that hold down the plug need to be removed. Using a small tweezer carefully remove the plug.

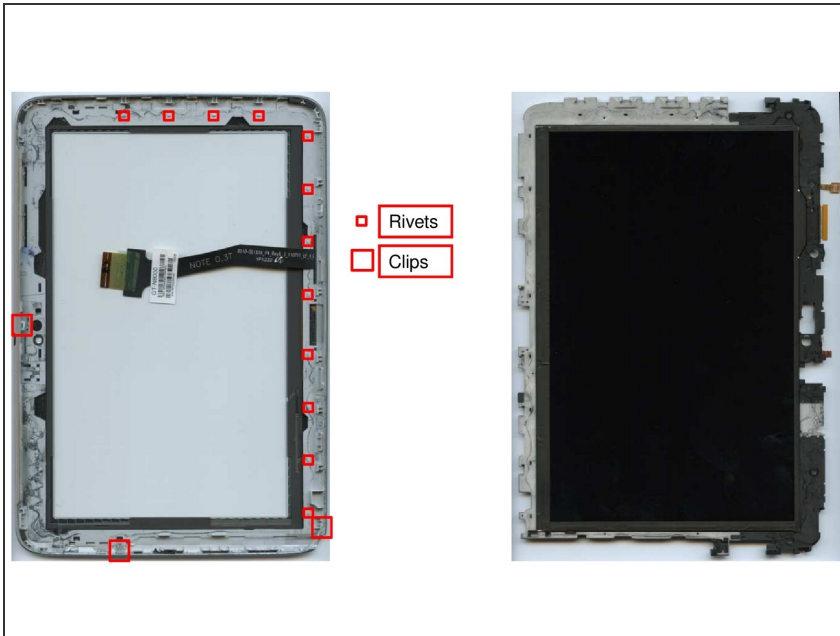
## Step 10 — Removal of Speakers



- Carefully remove the speakers by loosening **2 plugs** from each connector. Note that the speaker on

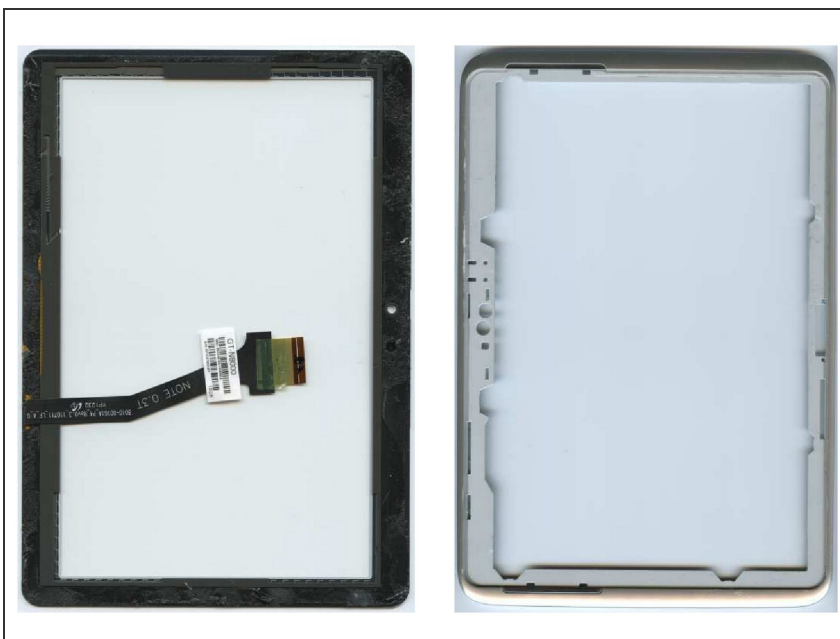
the right side has an antenna unit attached to it.

## Step 11 — Removal of Front Glass



- For the removal of the front glass, brutal force is required. The twelve clips that hold down the front glass must be (carefully) destroyed in order to detach the glass from the rest of the device.

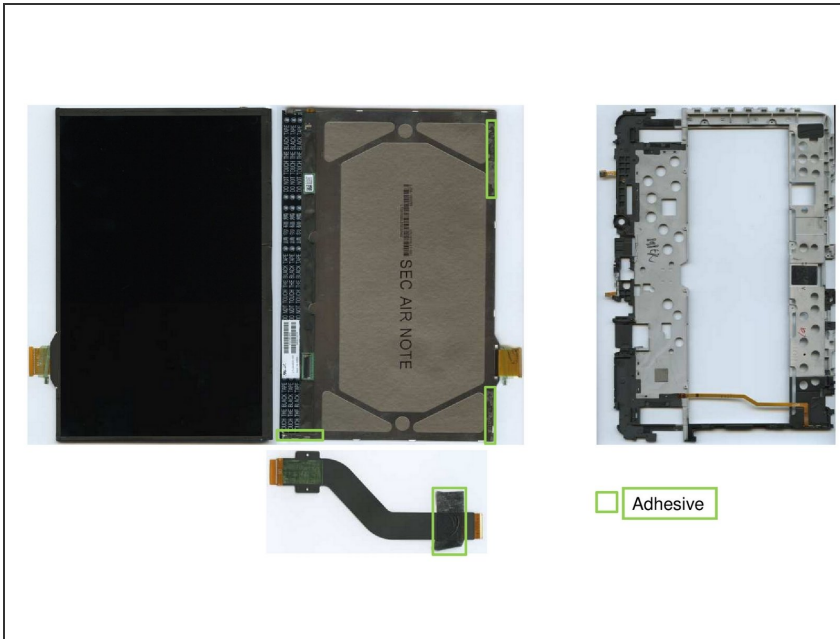
## Step 12 — Separation of Glass and Frame



- As glass and frame are bonded with strong adhesives, in order to separate both, a good lever is needed. The separation will likely leave scratches on both of the components.



## Step 13 — Separation of Display Unit and Frame



- Once the front glass is removed, separating display unit and frame is a piece of cake. Just unplug the ribbon cable and detach it from the double sided adhesive that it is fixed with and pull off the display unit from the three adhesive areas. The display can be lifted off easily.