



Sony Xperia Tablet S

This manual will guide you through the disassembly of a Sony Xperia Tablet S and removal of battery, mainboard and display.

Written By: Paul

A photograph of the back of a black Sony Xperia Tablet S. The device is rectangular with rounded corners. The word "SONY" is printed in silver in the top left corner. A small camera lens and a flash are visible in the top center. The device is set against a light blue background.

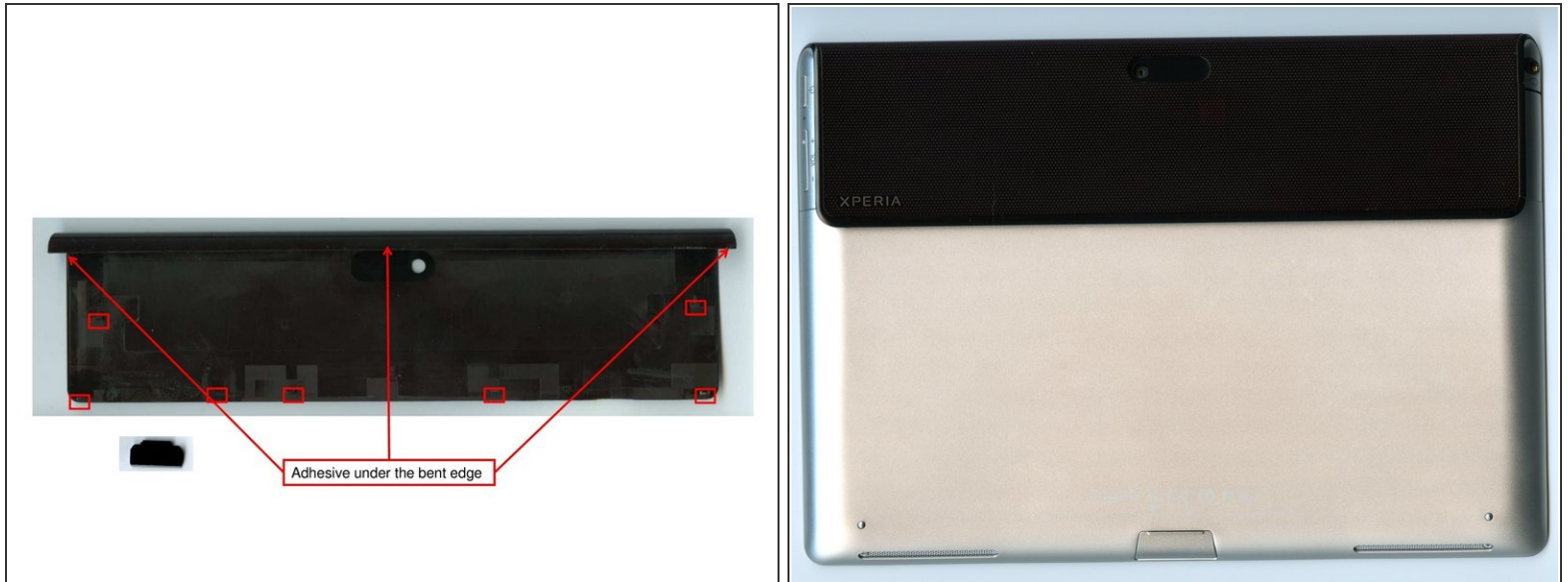
SONY



TOOLS:

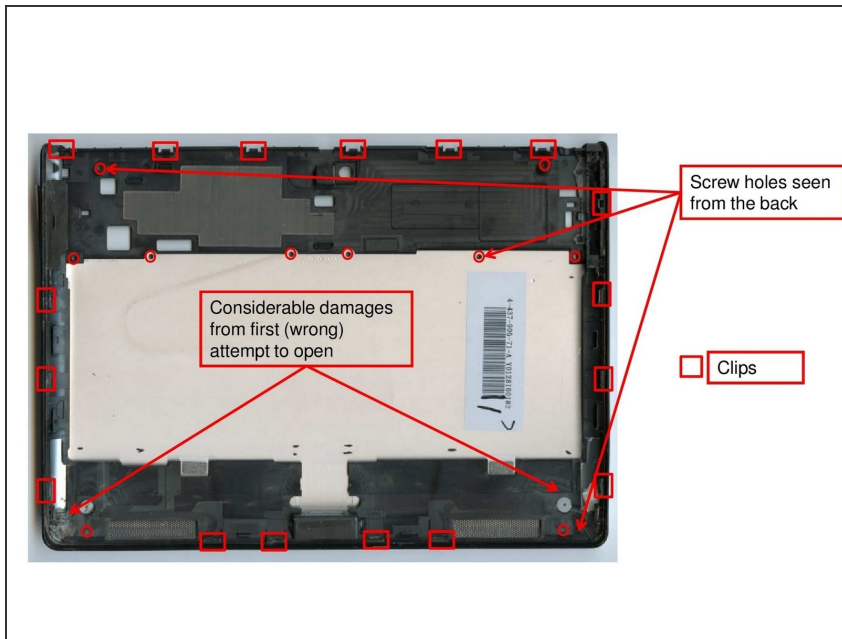
- [Screw Driver Phillips #00](#) (1)
- [Tweezers](#) (1)
- [Lever Tool](#) (1)

Step 1 — Removal of charging cable and camera cover



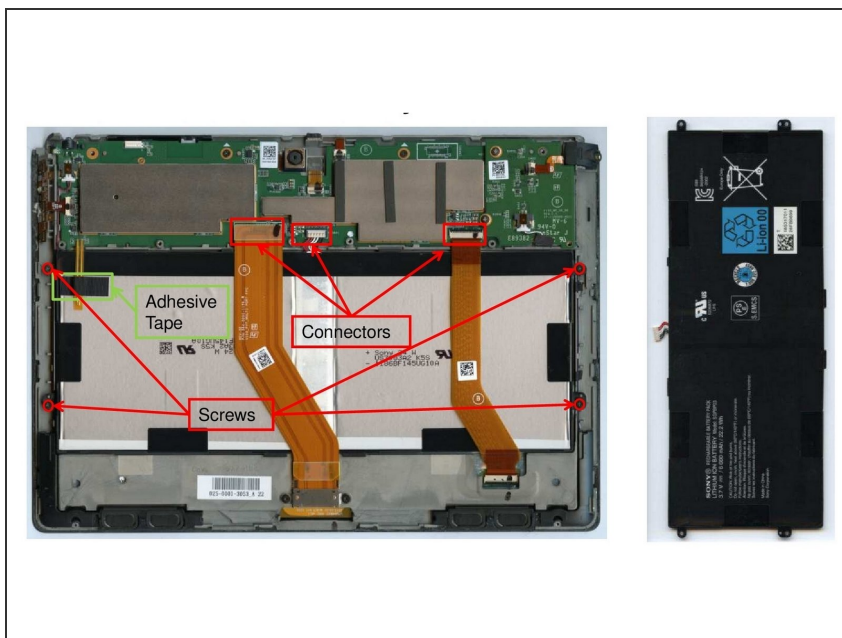
- The device must be pried open to access the interior. It is possible to remove the camera cover with a lever. Note that the camera cover is fixed with **7 clips** to the backside and where it reaches the front side of the device **3 small patches of double-sided adhesives** glue the cover to the rest.
- The cover for the charging cable can be removed manually using your fingers.

Step 2 — Removal of back cover



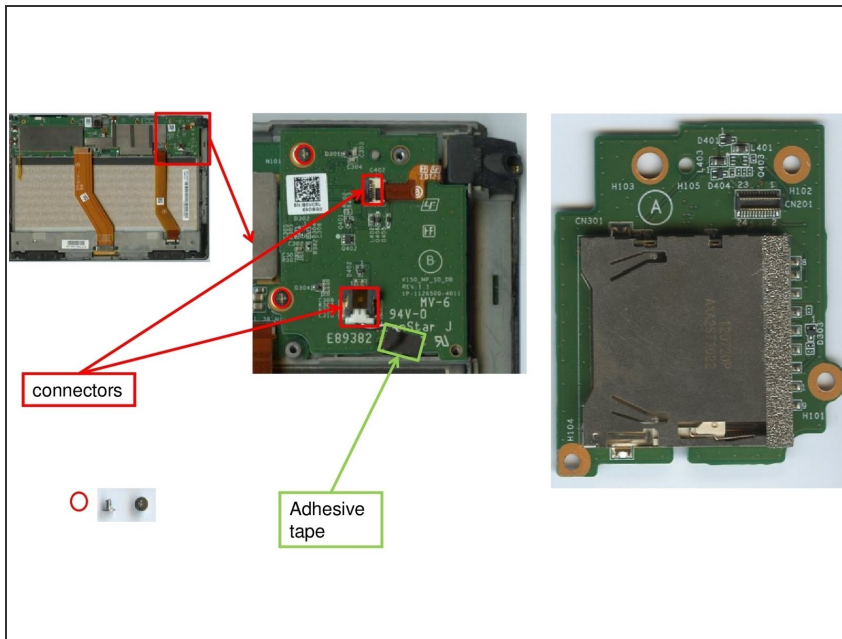
- Destroying the structural integrity of **15 clips** that hold the back cover should be enough to remove it.
- **8 screws** must be removed that attach the inner back cover to the rest of the device. The screws should be clearly visible (2 next to the speaker's covers, 6 right in the middle, 2 in the other two corners) and can be unscrewed using a screw driver.

Step 3 — Removal of battery.



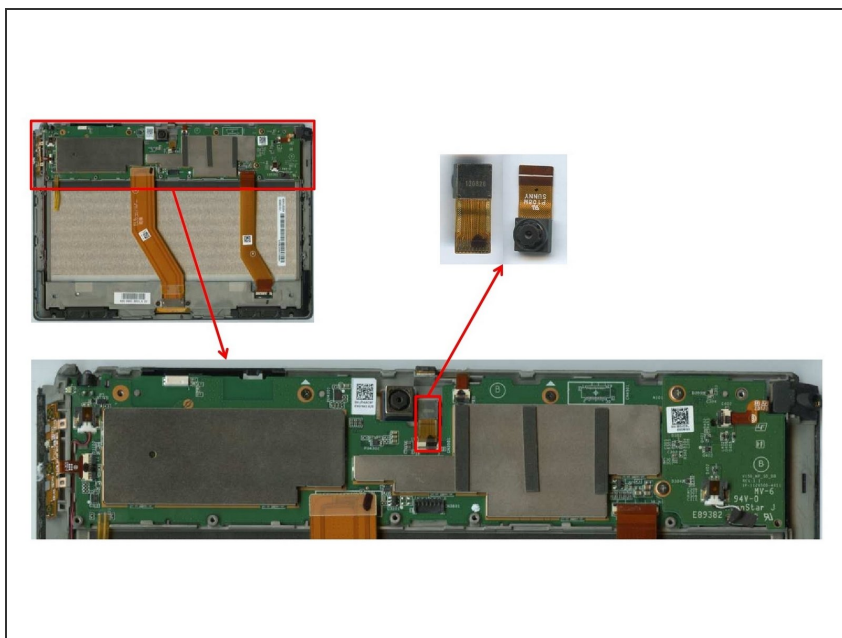
- Once the inner back cover has been removed, the removal of the battery should be in reach.
- Detach the sticker above the temperature sensor (green box in the graphic). Unscrew **4 screws** near the edges of the battery. Unplug **2 connectors**, of the ribbon cables that are located above the battery and one that connects the battery to the mainboard.
- Remove the battery from the device.

Step 4 — Removal of SD-Card-Reader



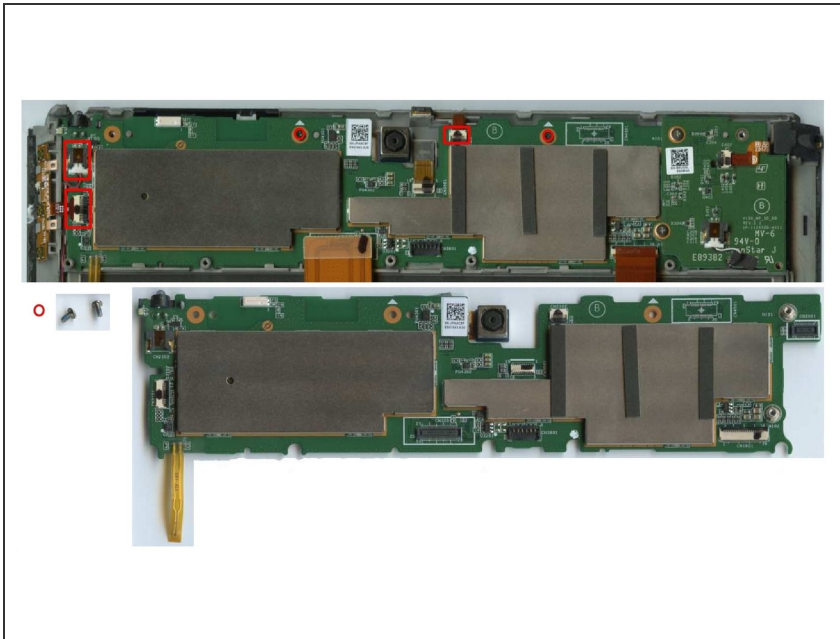
- The SD-Card-Reader is located in one of the corners of the device's mainboard (see graphic).
- First remove the adhesive tape from the connector to the speakers. Then unplug **2 connectors**. Unscrew **2 screws** that fix the SD-Card-Reader to the mainboard.
- Extract the SD-Card-Reader from the device.

Step 5 — Removal of front camera



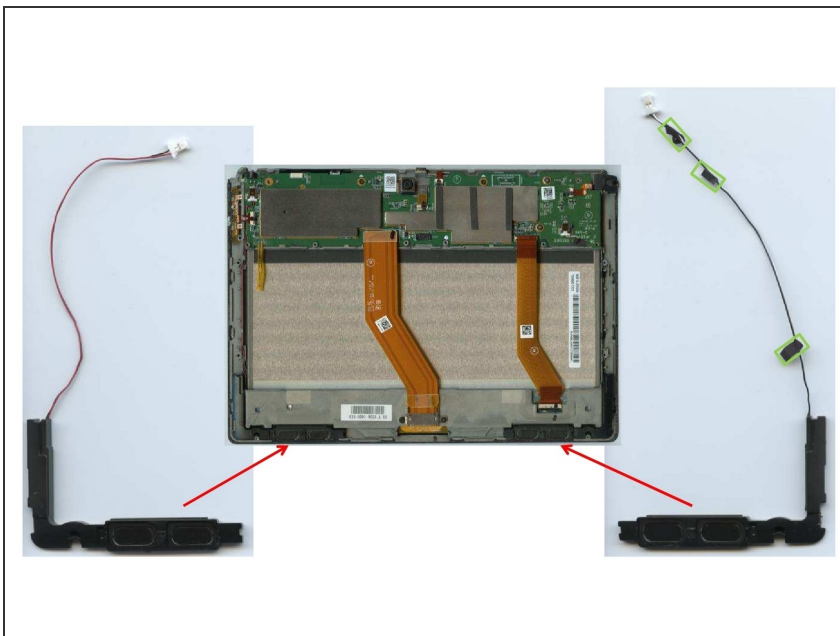
- The front camera is located in the center of where the camera cover used to be. Remove it by unplugging its connector to the mainboard.

Step 6 — Removal of Mainboard



- In order to remove the mainboard from the device unscrew **3 screws** and disconnect **2 of the connectors** that are still holding down the mainboard.

Step 7 — Removal of Speakers



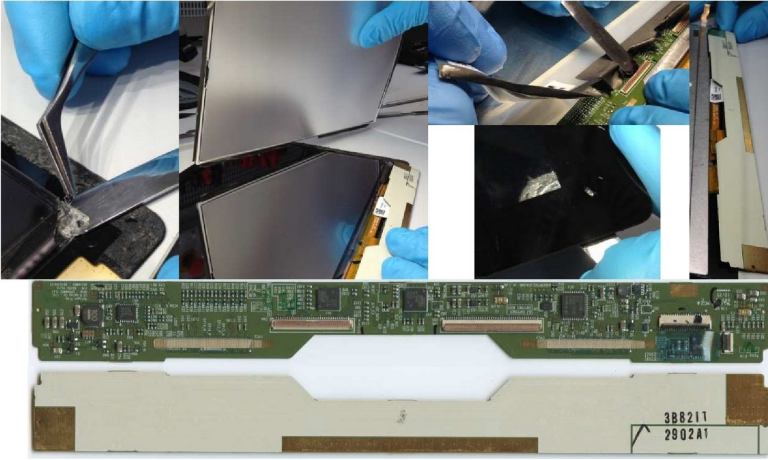
- The speakers are glued to the device using double-sided adhesives and should be easy to lever off with an appropriate tool.
- Note: one or both of the cables may also be attached to the device with one-sided adhesives. Remove of necessary.

Step 8 — Separation of display unit and frame



- Frame and display unit are glued to each other like peanut butter and jelly. Pure force is required to disattach them. Use a lever. Difficult.

Step 9 — Removal of display unit and glass



- In order to remove the display unit and the glass cover, again, force is needed. And a strong lever. Both components will likely take heavy damage from this.