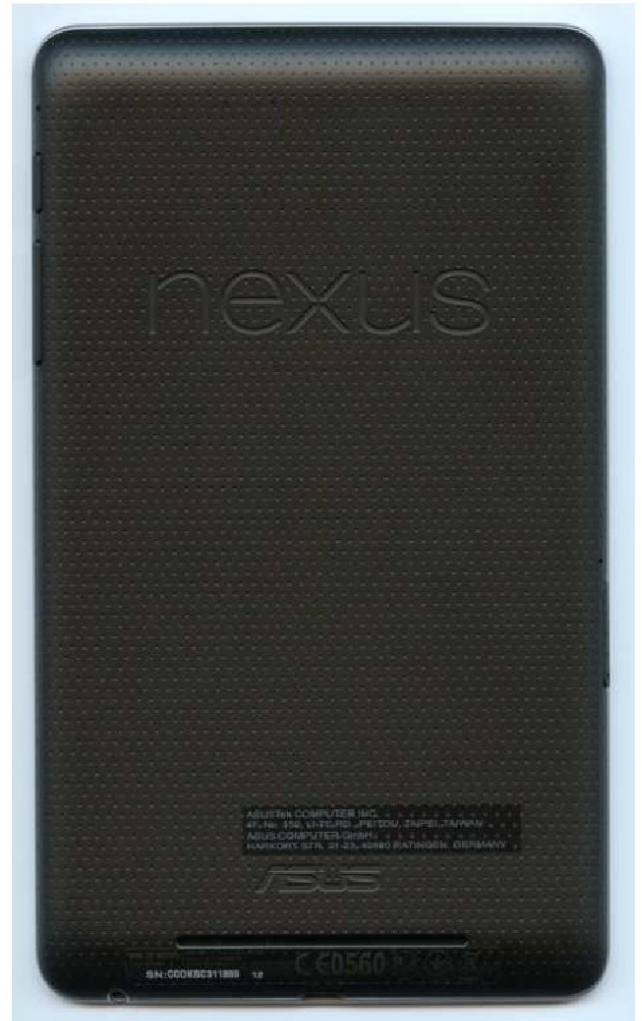




Written By: Paul

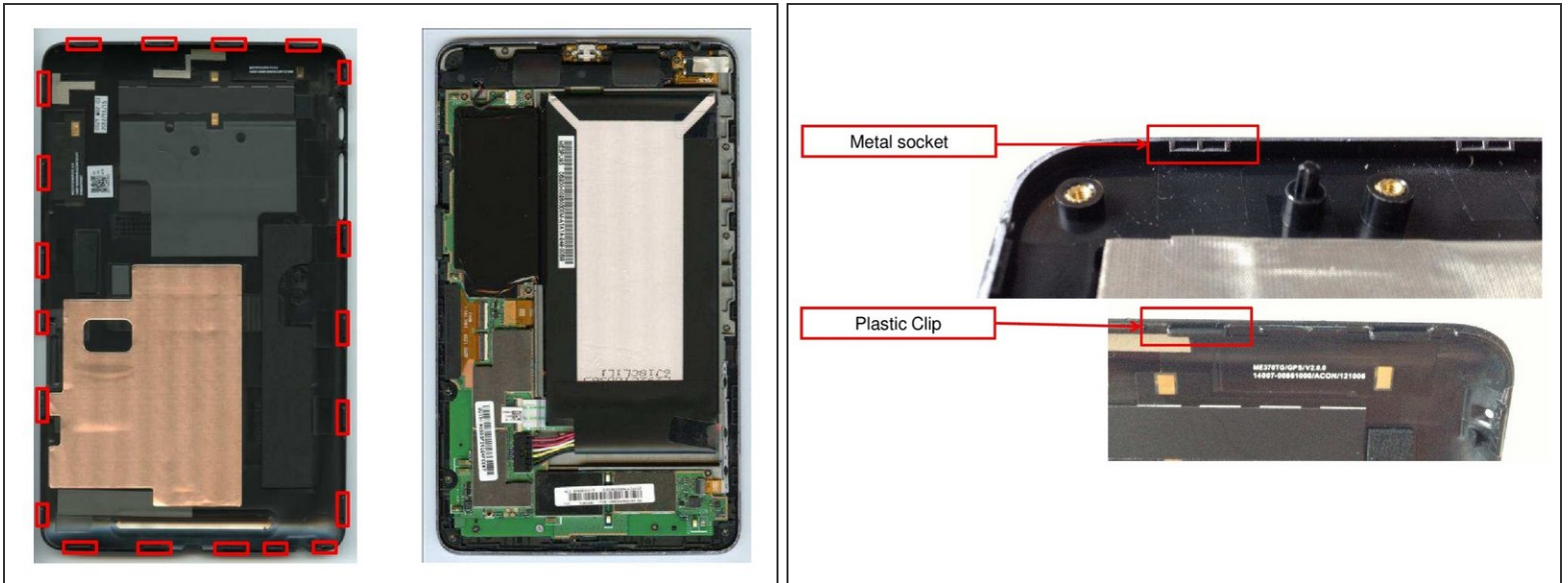




## TOOLS:

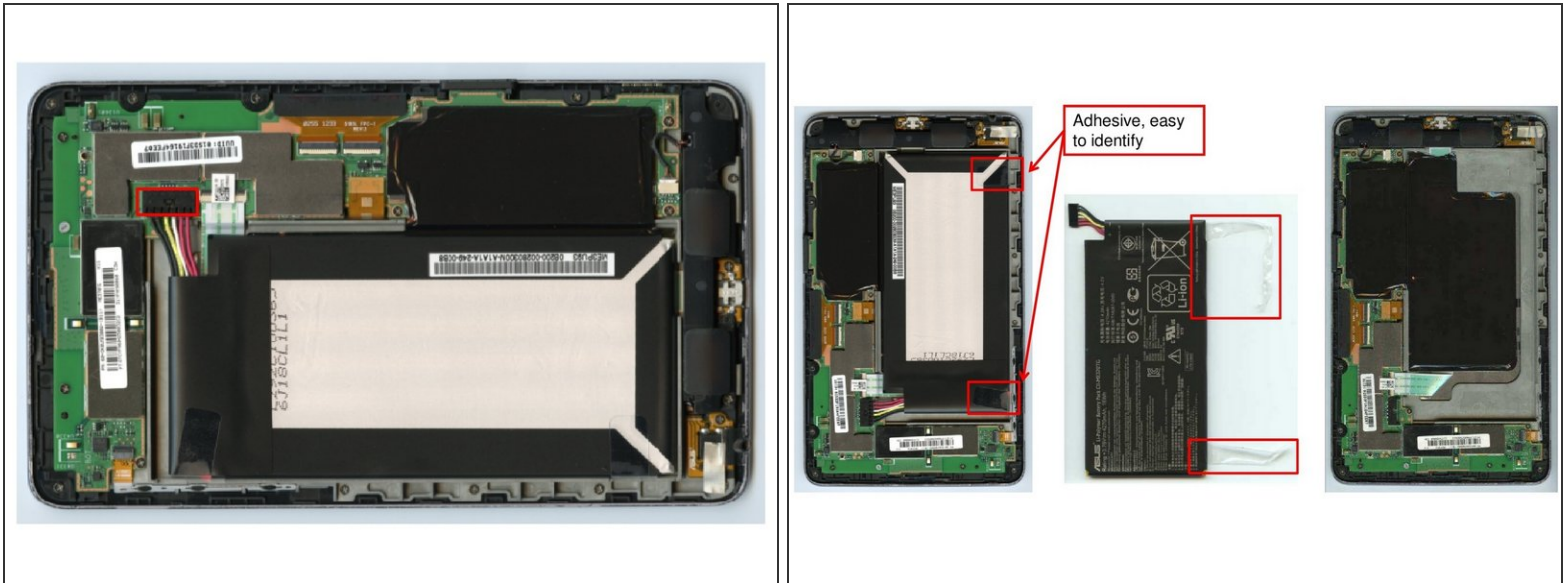
- [Lever Tool](#) (1)
- [Screw Driver Phillips #00](#) (1)
- [Tweezers](#) (1)

## Step 1 — Removal of back cover



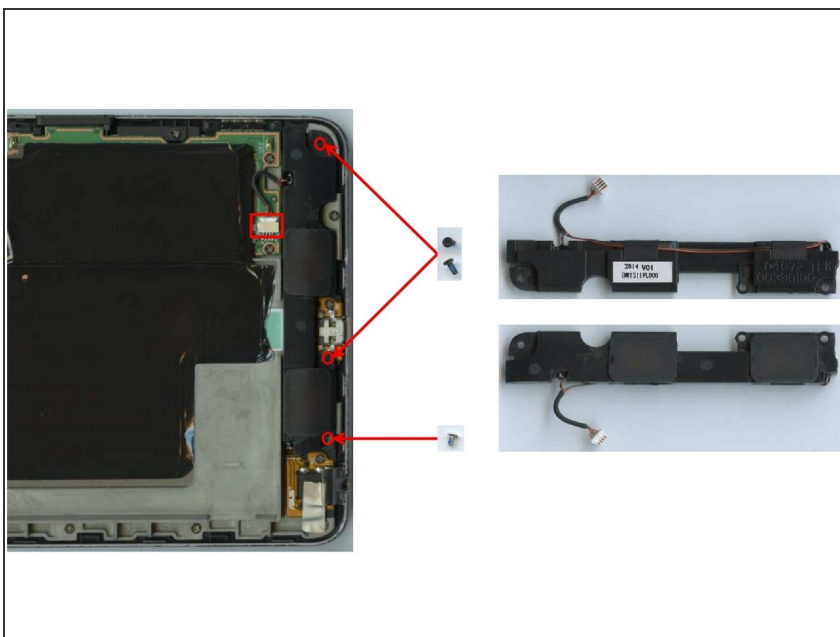
- In order to open the device and remove the back cover a total of 20 clips need to be loosened using a lever tool. This should pose no problem and leave the device undamaged.

## Step 2 — Removal of battery



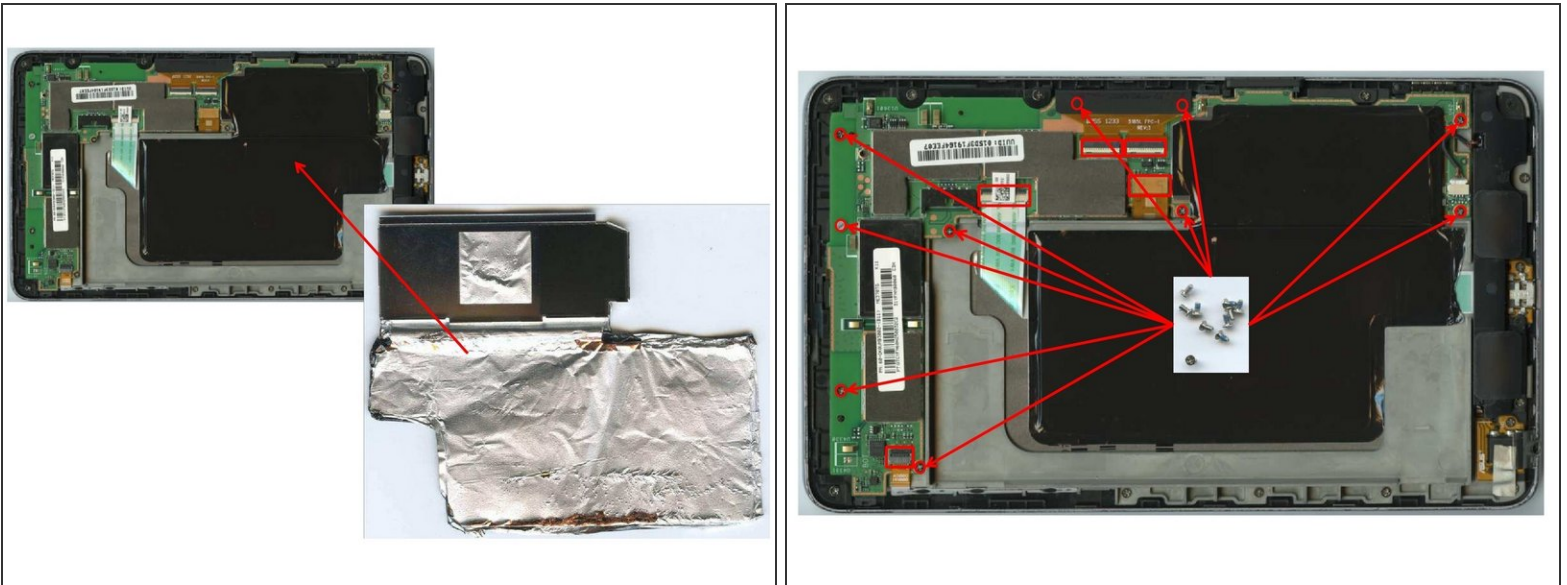
- Removing the battery requires two short steps. First unplug the battery connector that connects the battery to the plug located on the mainboard.
- After this, the force of two small double-sided adhesive patches located underneath the battery needs to be overcome using a lever tool.

## Step 3 — Removal of speakers



- To remove the speakers, first three screws close to the edge of the device need to be removed using a #00 screw driver.
- After unplugging the plug that connects the speakers to the mainboard, the speakers should be easily removable.

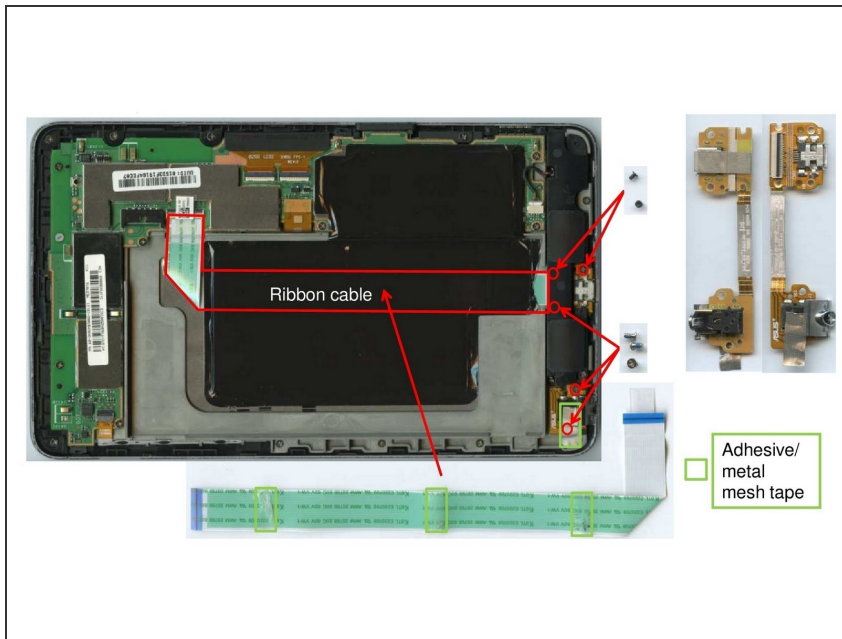
## Step 4 — Removal of EMI shields and mainboard



- The tin copper shielding of the EMI shield, is adhered pretty well to the mainboard. Pulling it off will require some work.
- Removing the mainboard needs some unscrewing and unplugging. A total of ten screws need to be removed using a #00 screw driver. NOTE: one of the screws may be located underneath the warranty seal
- Before being able to lift the mainboard from the device, five cables need to be unplugged.

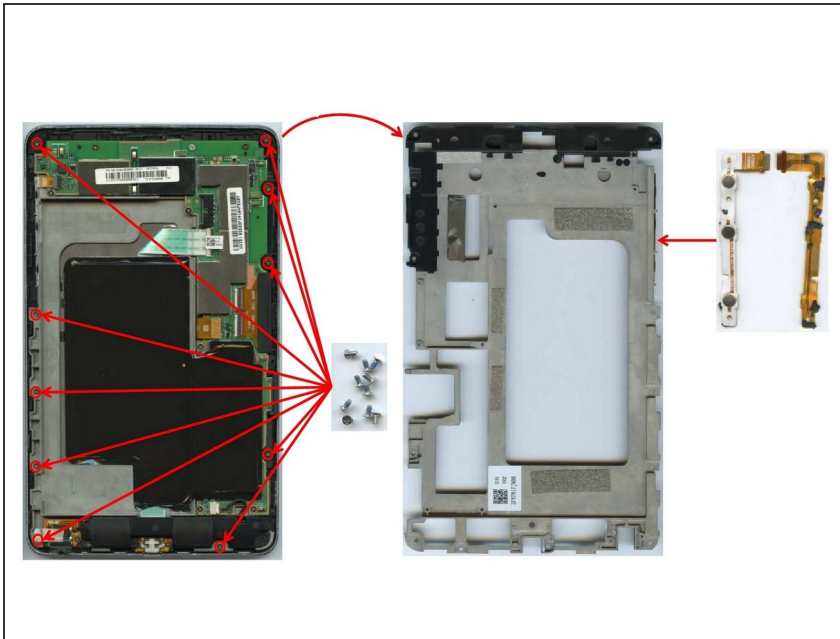


## Step 5 — Removal of speakers and headphone connector board



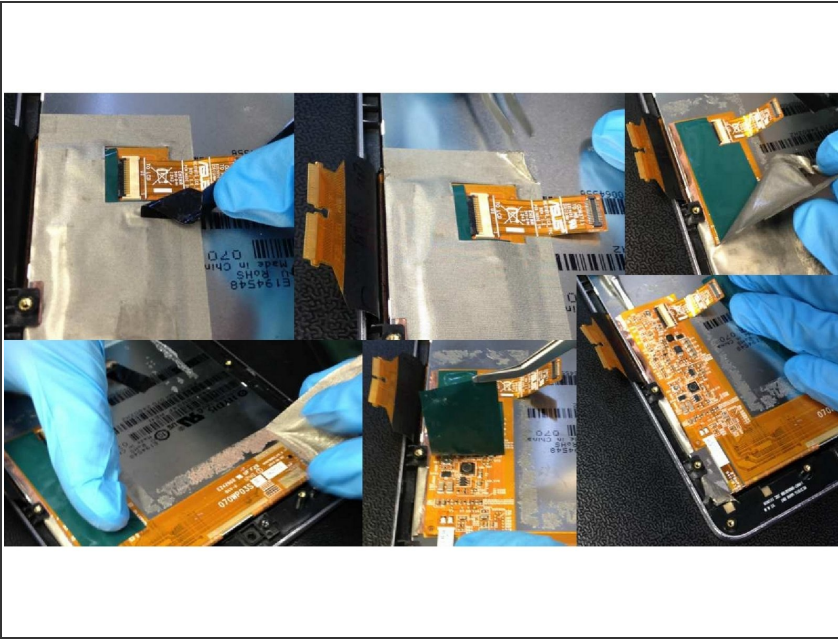
- In order to remove the ribbon cable visible, three adhesive patches need to be loosened. After this the ribbon cable can be unplugged.
- After this, five screws need to be removed. Three are located close to the usb port and two can be found in one of the corners of the device. Use a #00 screw driver to safely remove the screws.
- The USB/headphone connector board can then be easily removed.

## Step 6 — Removal of magnesium frame



- In order to remove the magnesium frame that stabilizes the device a lot of unscrewing is required. A total of ten screws have to be removed using a #00 screw driver.
- Some metal mesh has to be removed too, before lifting the frame from the device.

## Step 7 — Removal of display driver board



- The removal of the display unit will result in the destruction of the rest of the device. As the display is glued excessively to the rest of the device, it can only be removed using brutal force and a strong lever.