



Lenovo Ideapad

This manual will guide you through the disassembly of an Lenovo Ideapad and removal of battery, mainboard and display.

Written By: Paul





TOOLS:

- [Lever Tool](#) (1)
- [Screw Driver Phillips #00](#) (1)

Step 1 — Removal of camera cover and back cover



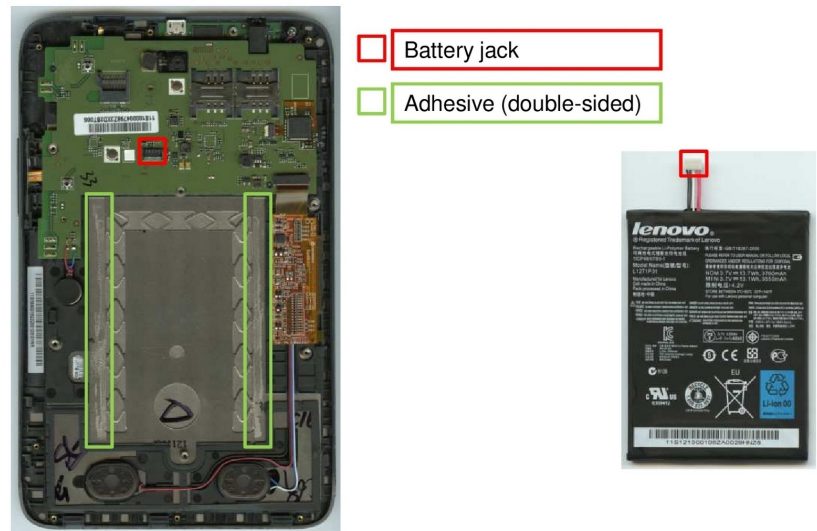
- In order to open the device, first remove the camera cover. It can be pushed off manually requiring not tool at all.
- In order to remove the rest of the back cover, one screw has to be removed using a #00 screw driver. NOTE: the screw is located underneath the warranty label.
- The plastic back cover can then be pulled off manually.

Step 2 — Removal of plastic frame



- To remove the plastic frame a total of fifteen screws need to be removed using a #00 screw driver.
- NOTE: One of the screws is located underneath the label for the serial number.
- The plastic frame can then be easily removed.

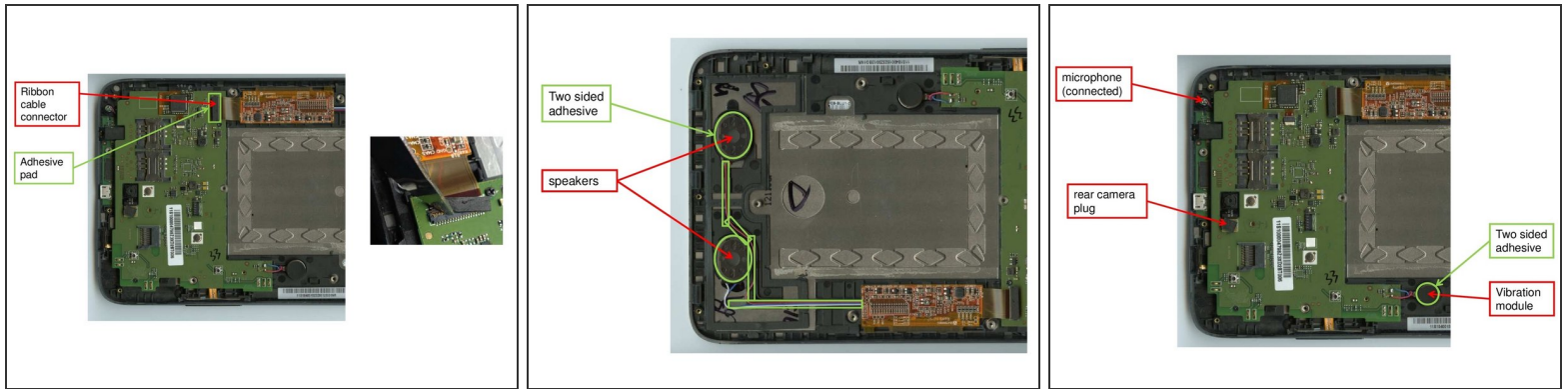
Step 3 — Removal of Battery



- Once the plastic frame is removed, that battery can be extracted by unplugging the battery jack and

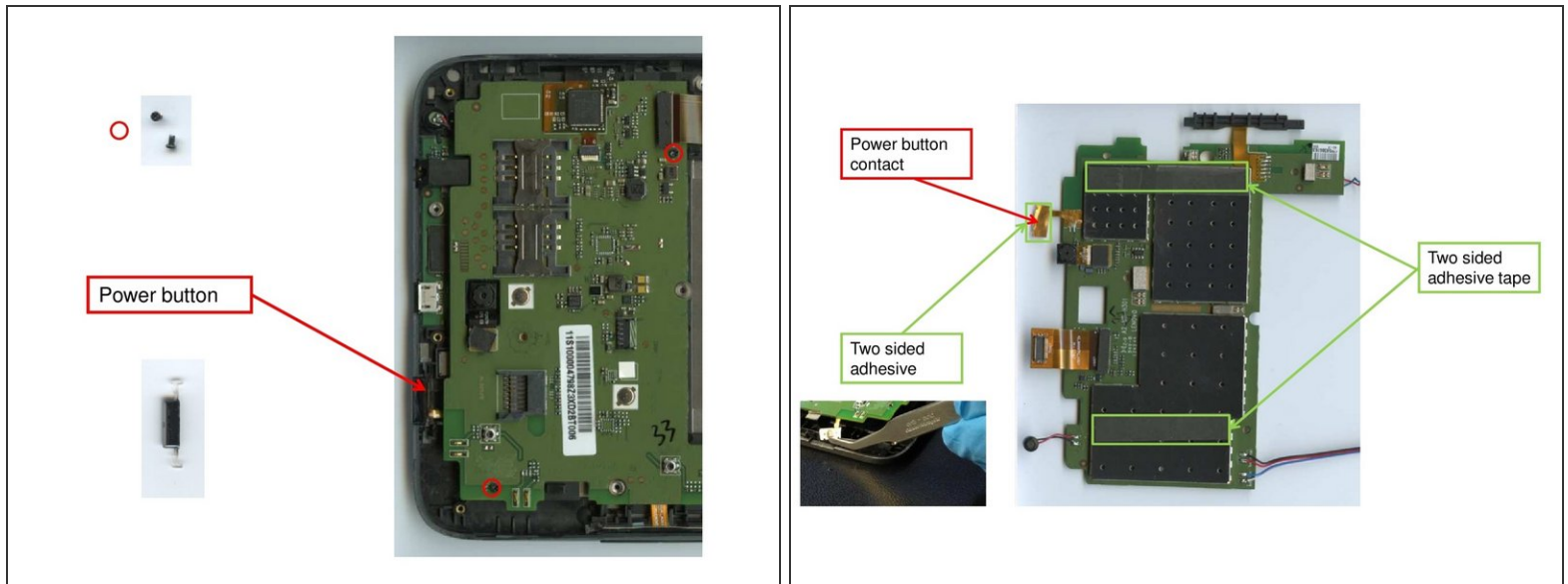
prying the battery off of two double-sided adhesive patches. This should not pose a problem.

Step 4 — Removal of components on mainboard



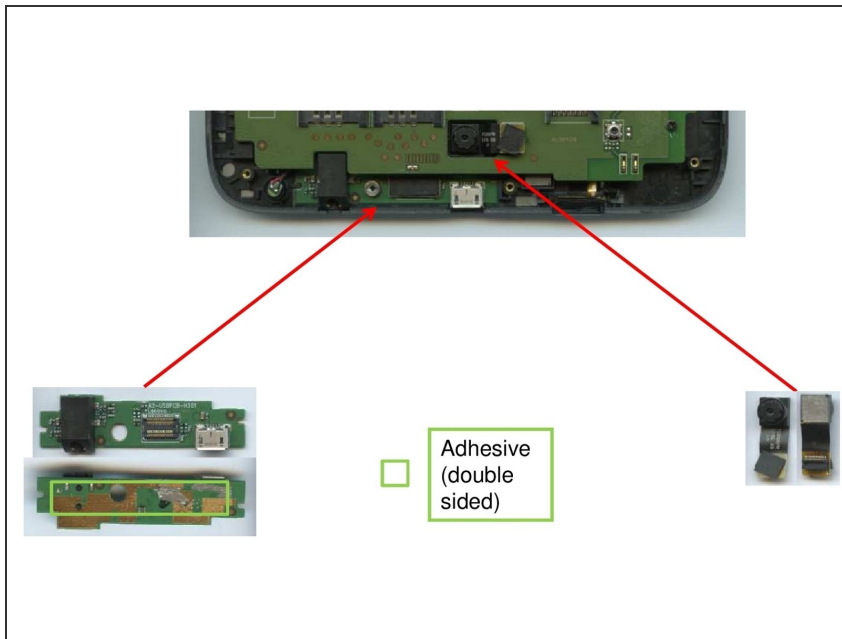
- Removing the main components on the mainboard starts with opening the ribbon cable connector in figure one. It is attached to the mainboard with a small two-sided adhesive that can be levered off easily.
- Removing the speakers, the vibration module and the microphone requires similar little effort. Just find the components and remove them using a small lever tool.

Step 5 — Removal of mainboard



- Before removing the mainboard, first loosen the two screws indicated in figure one using a #00 screw driver.
- The power button located on the edge of the device can be extracted manually.
- The mainboard can now be removed easily. It is only attached to the device with two small adhesive patches.

Step 6 — Removal of USB/headphone board and rear camera



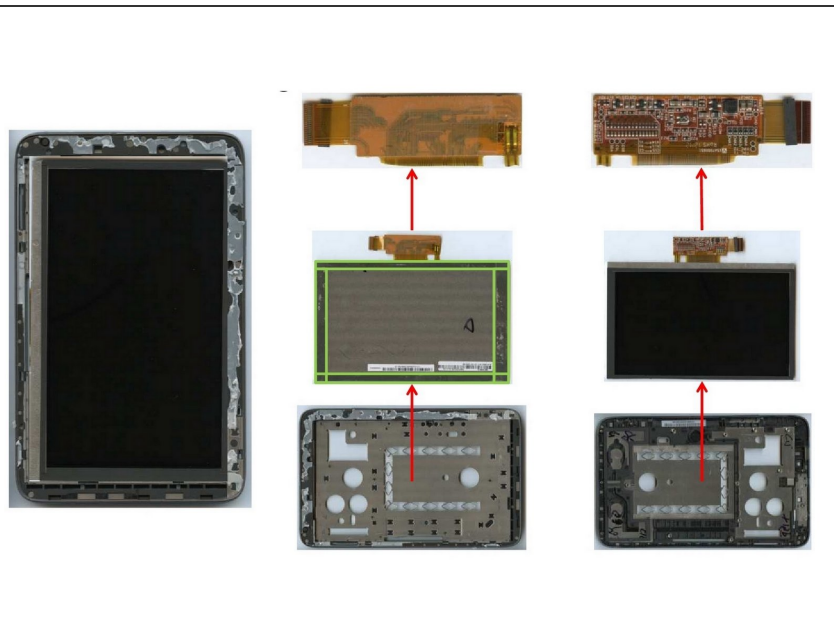
- Both the usb/headphone board and the rear camera are attached to the device using only weak adhesives that can be levered off without problem.

Step 7 — Separation of display glas and frame



- In order to separate display and frame, a strong lever is required. Adhesives along the frame form a strong bond between display and frame that needs to be destroyed.
- NOTE: When trying to keep the display cable intact. You need to carefully lift it through the frame. Otherwise it will tear.

Step 8 — Separation of display and frame



- The separation of display and frame will not be possible without destroying some of the parts.
- Cutting off the flexboard will probably be the best option.