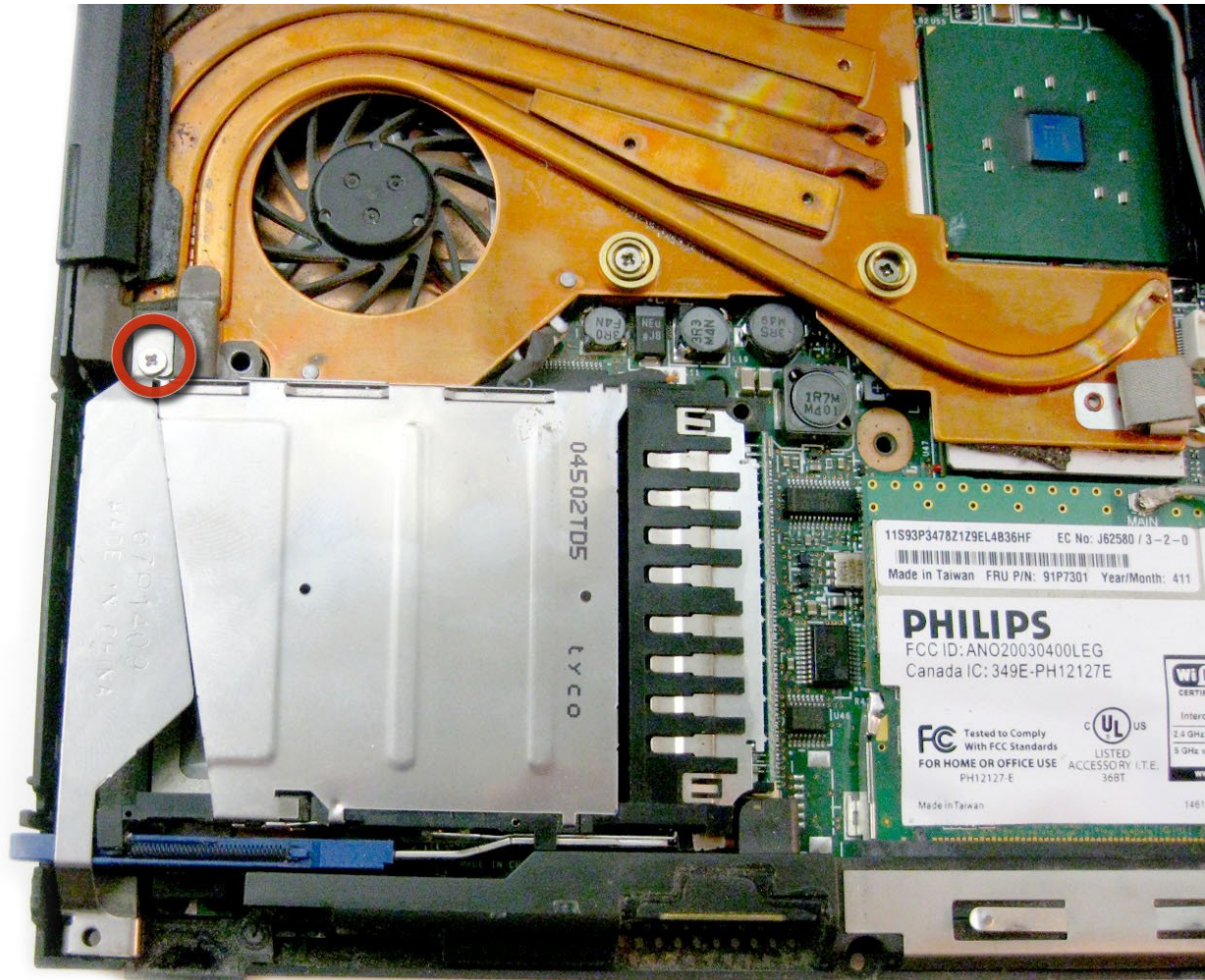




# IBM ThinkPad T42 Mini-PCI Port Replacement

Written By: Dozuki System



---

## INTRODUCTION

The Mini-PCI port can be accessed easily after removing the rear cover



### TOOLS:

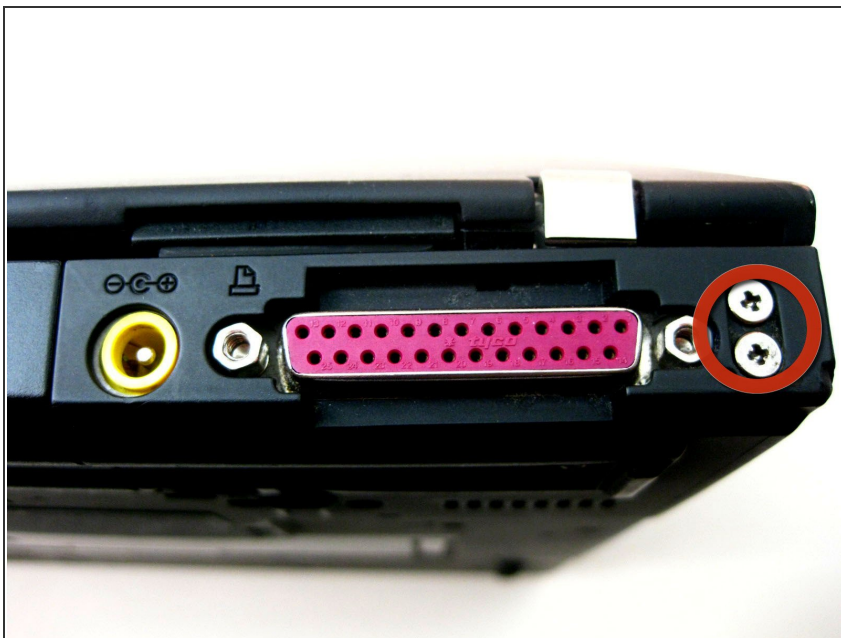
- [Phillips #0 Screwdriver](#) (1)
-

## Step 1 — IBM ThinkPad T42 Mini-PCI Port Replacement



- Unscrew the following screws on the underside of the T42.
- Note: for ease of reassembly, keep track of which screws go where.

## Step 2



- Unscrew the 4 screws on either side of the rear end of the laptop.

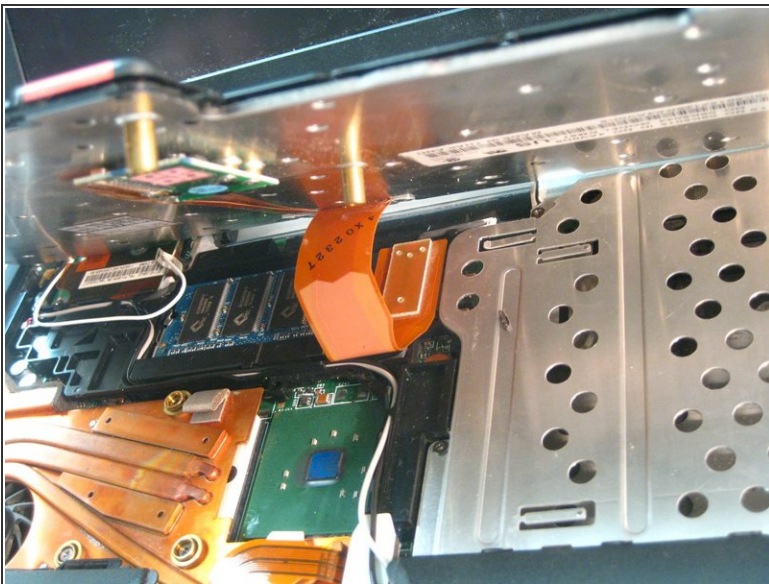


### Step 3



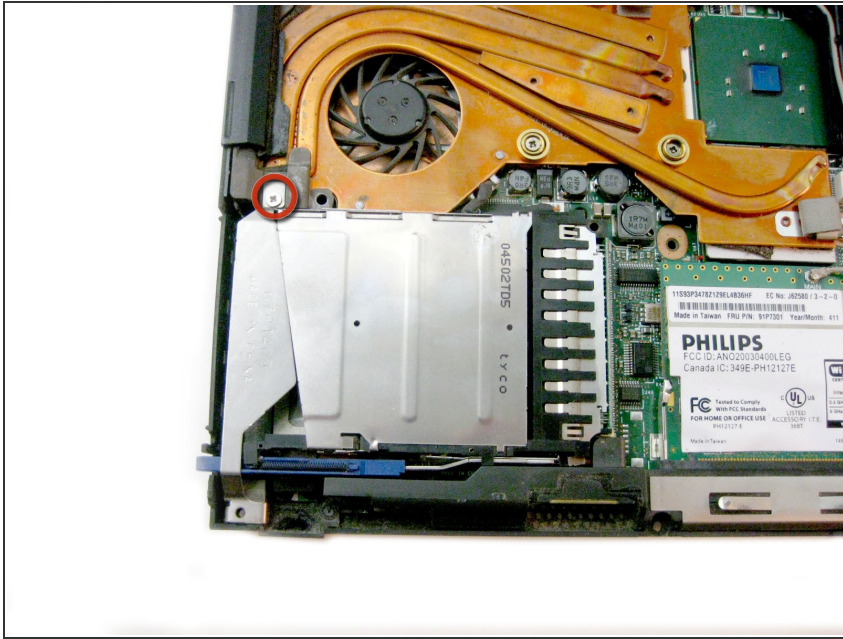
- Flip the laptop over and open the display carefully - the keyboard, palm rest and bezel will be loose.

### Step 4



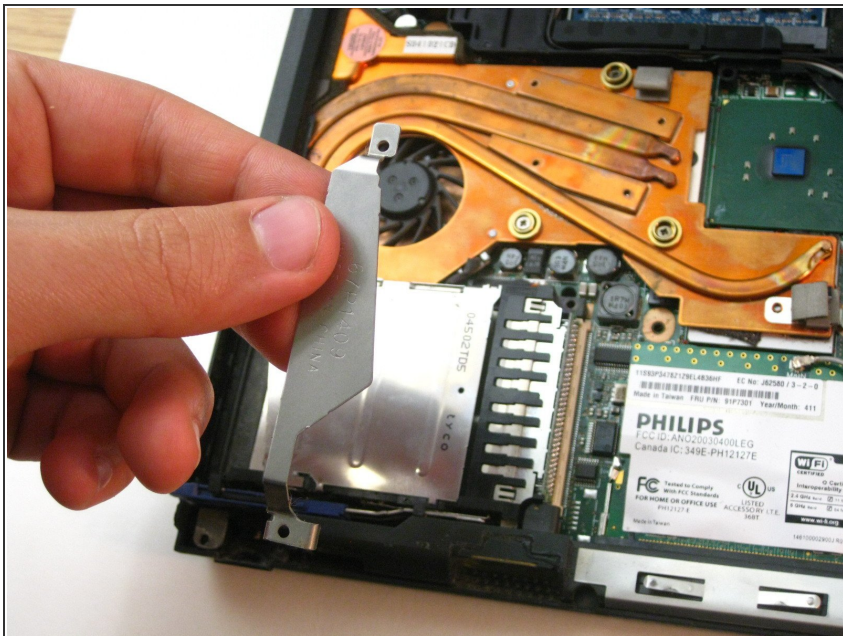
- Maneuver the palm rest away from the keyboard carefully, both the keyboard and palm rest/trackpad will come off together.
- **\*\*WARNING\*\*** Both the keyboard and trackpad have connectors to the motherboard. Disconnect these before completely removing either component.

## Step 5



- Unscrew the screw holding the port's bracket down.

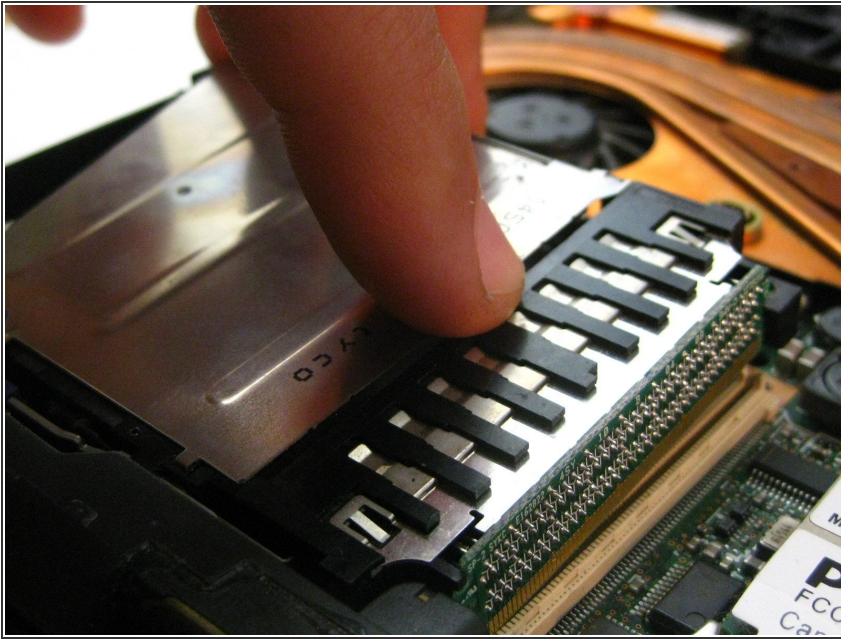
## Step 6



- Remove the bracket.



## Step 7



- Carefully disconnect it from the motherboard.

To reassemble your device, follow these instructions in reverse order.