

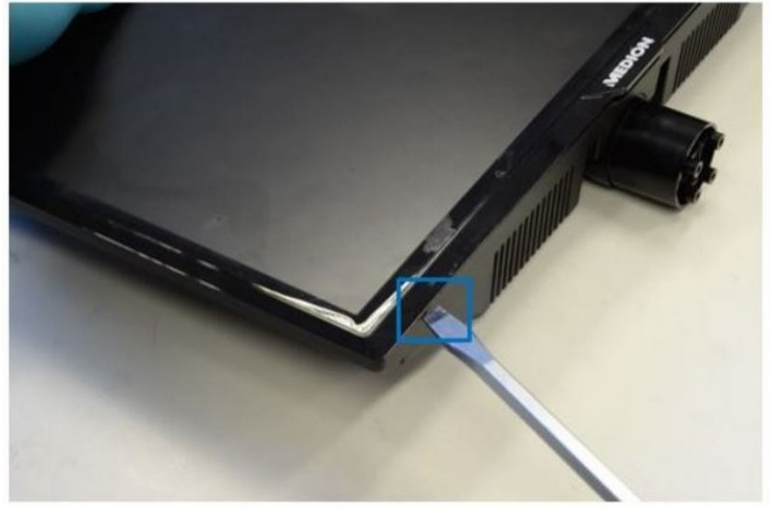
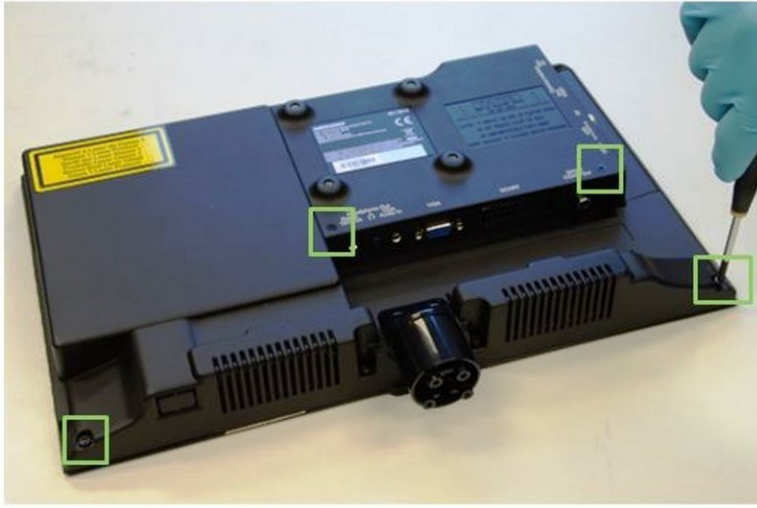


Medion P12181 TV set

Written By: Gergana

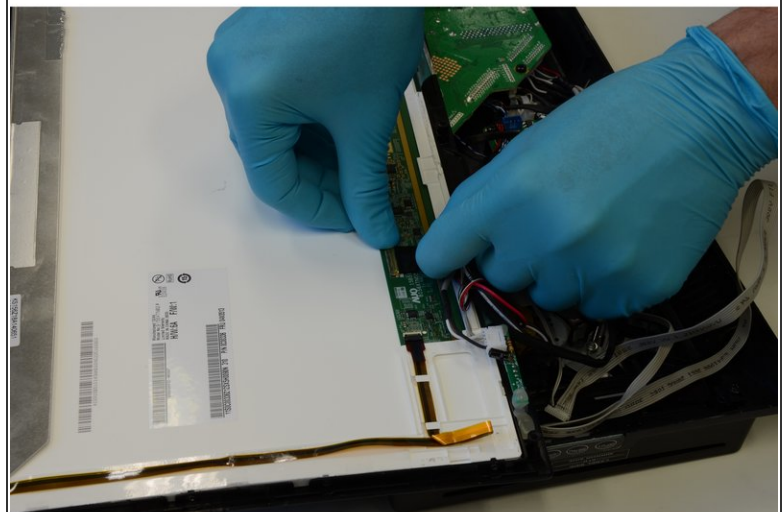
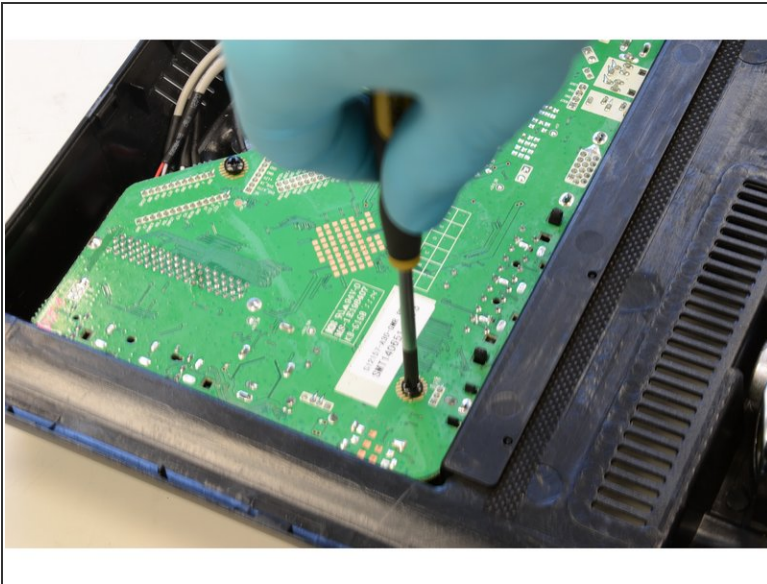


Step 1 — Opening



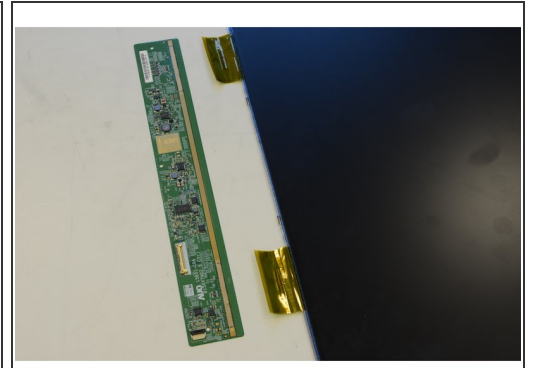
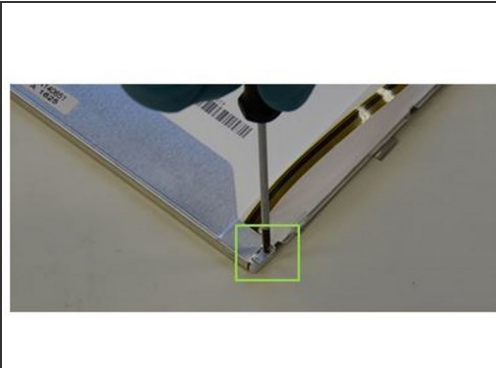
- To begin with, remove the eighth screws at the back of the TV, using the Phillips #2 screwdriver. To open the TV, unfasten the clips.

Step 2 — Remove Printed Circuit Boards



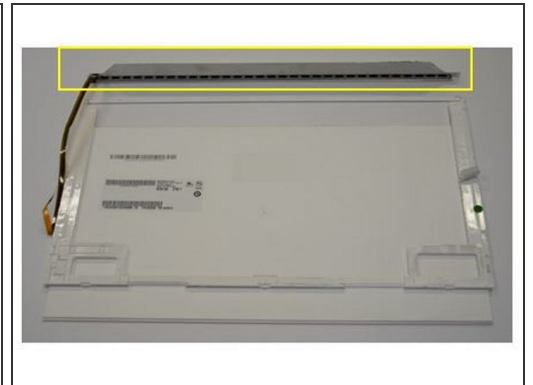
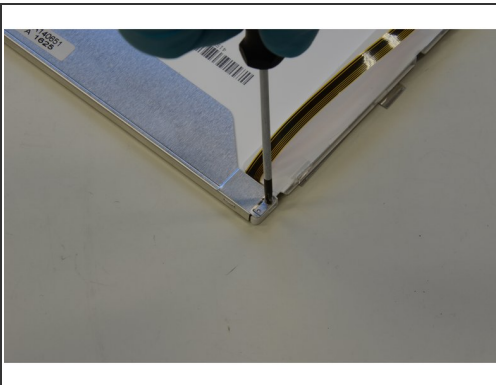
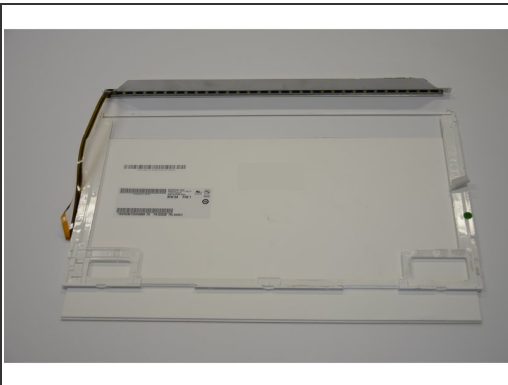
- After the TV set is opened, the printed circuit boards can be removed.
- Unfasten the connectors and remove eleven screws (using PH#2 (x7), PH00 (x3) & PH#1 screwdrivers).

Step 3 — Remove Display Unit



- Using PH#1 screwdriver, undo the screws fastening the display unit to the front frame.
- To obtain the LCD panel, unclip the metal frame.

Step 4 — LED Backlight Removal



- The LED backlights are located below the metallic frame.
- Using PH#00 screwdriver, the metallic frame can be removed.
- Unclip the clips fastening the LEDs to the metal frame.

Step 5 — Material Fractions



- Removing the backlights provides access to the display foils.
- The enclosure of the Medion TV is composed of PC-ABS, accounting for 22wt-% of the total TV set weight.