



Samsung UE32H6470SSXZG TV set

Disassembly guide for Samsung UE32H6470SSXZG (LED TV)

Written By: Amaia



Step 1 — Opening



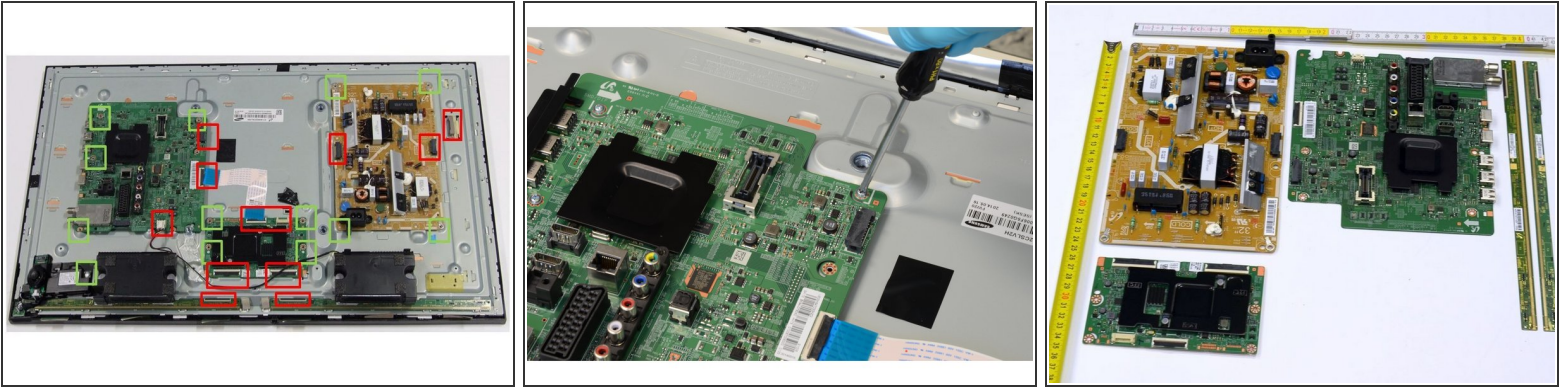
- Place the TV screen side-down.
- Using PH#2 screwdriver, begin to loose the eleven screws of the back-casing (highlighted in green boxes).
- Work your way around the TV until you can pull the back cover off.

Step 2 — Separation of Fractions (Polymers)



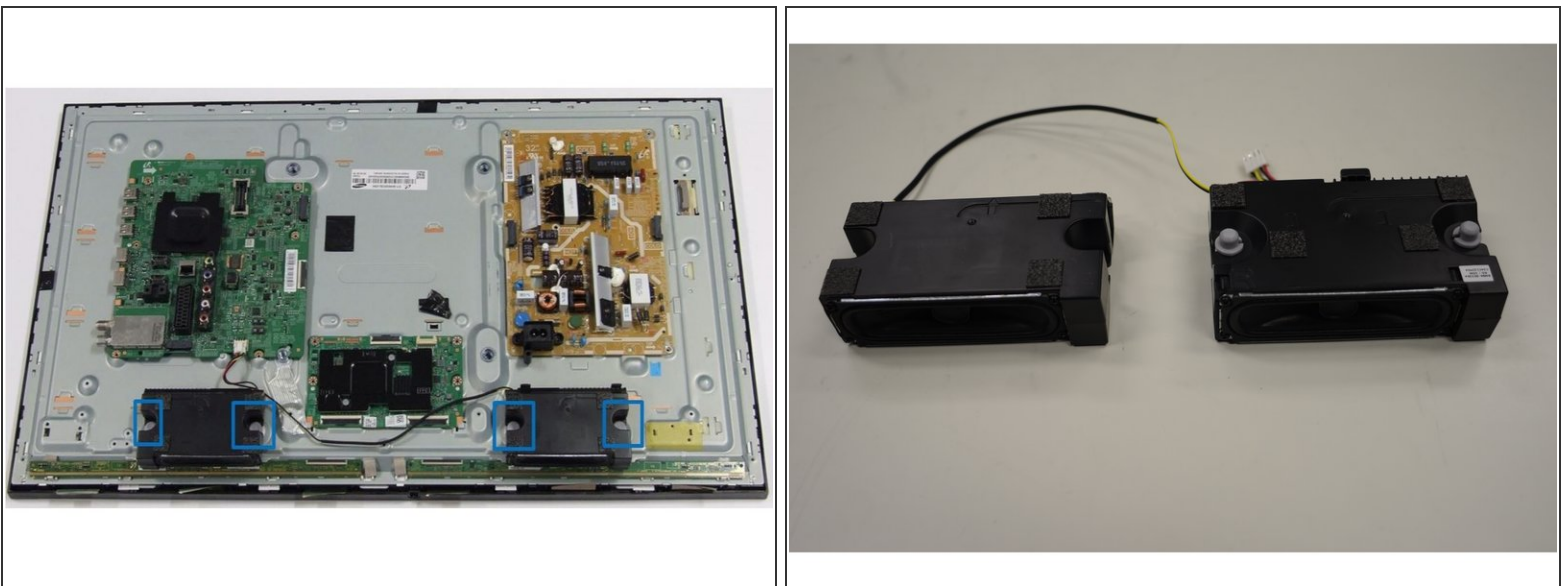
- Note that two different type of polymers are molded together (red box). It is not possible to further separate them.

Step 3 — Removal of Printed Circuit Boards (PCB)



- Remove cables: Disconnect all twelve connectors (highlighted in red boxes) and separate the tapes used to fix cables to the metal casing.
- Remove Printed Circuit Boards (PCB): Using PH#2 screwdriver, begin to loose the thirteen screws (highlighted in green boxes) which fix the PCBs to the metal casing.

Step 4 — Removal of Speakers



- Remove the speakers by extracting them manually from their mountings (blue boxes).

Step 5 — Removal of Front Frame



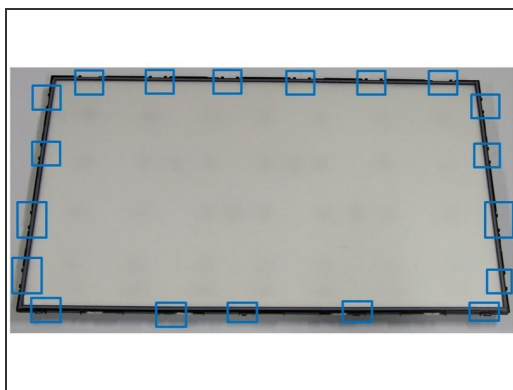
- Using PH#1 screwdriver, loose the only screw that fixes the front frame and the display unit (highlighted in green box).
- Place the TV facing screen up and remove the front frame.
- Again, as with the back-housing, the front frame contains two different polymer types molded together (red box).

Step 6 — Removal of Liquid Crystal Display (LCD)



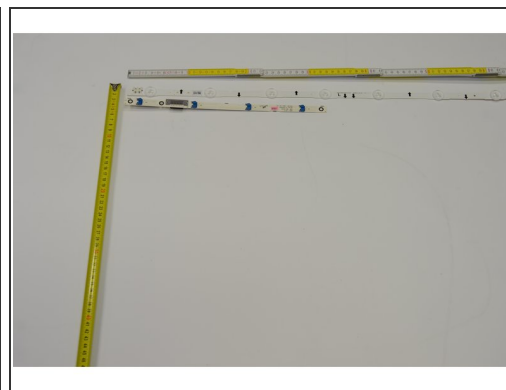
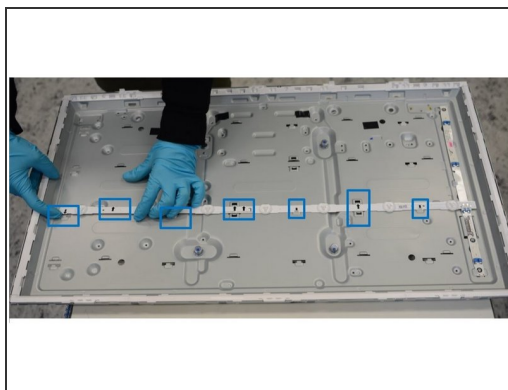
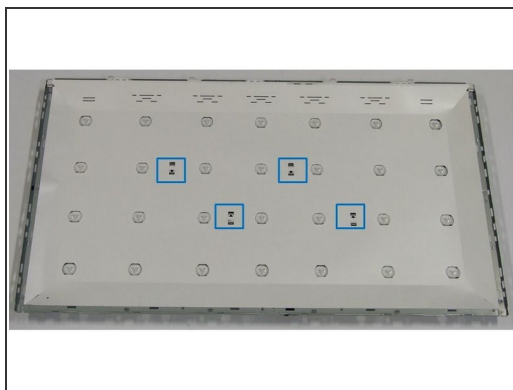
- Carefully remove the already exposed LCD Panel.

Step 7 — Removal of Polarized Foils



- Using a slotted screwdriver, begin to lever the nineteen clips of the inner frame (highlighted in blue boxes) starting at the bottom of the TV.
- Continue to work your way around the frame counterclockwise until you can pull the frame off.
- Then, remove the already exposed polarized foils.

Step 8 — Removal of Backlights (LED)



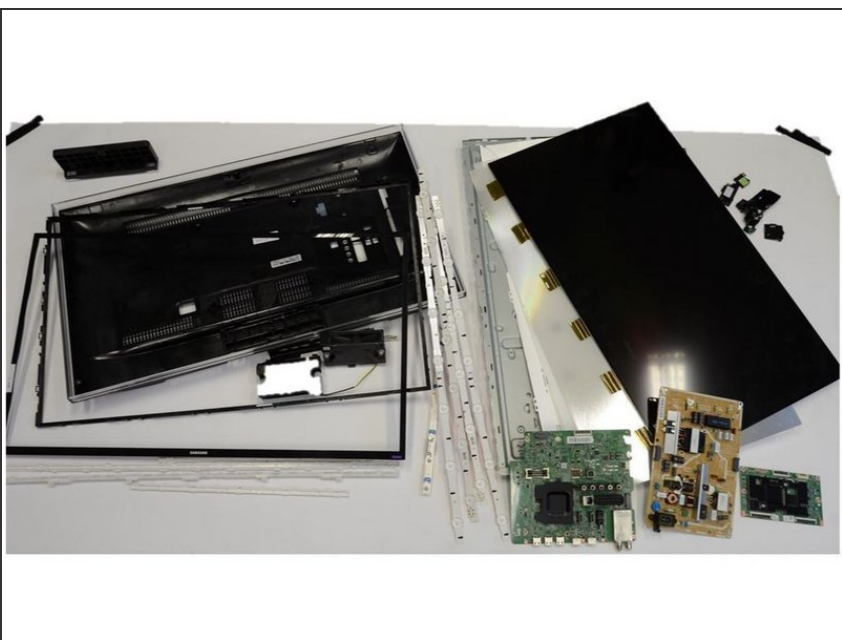
- Using slotted screwdriver, loose the four clips (blue boxes of the first picture).
- Remove the protective foil and access the backlight unit.
- Use your fingers to pry open the PCBs from the clips on the metallic casing (blue boxes of the second picture).
- In total, loose thirty-two clips starting with the four LED containing PCBs and ending with the connection PCB on the side.

Step 9 — Separation of Fractions (Plastics and Metals)



- Using slotted screwdriver, loose twenty clips.
- Remove the plastic frame located inside the metal casing which is mounted in four pieces.

Step 10 — TV Dismantling Fractions



- All fractions obtained after TV dismantling.