

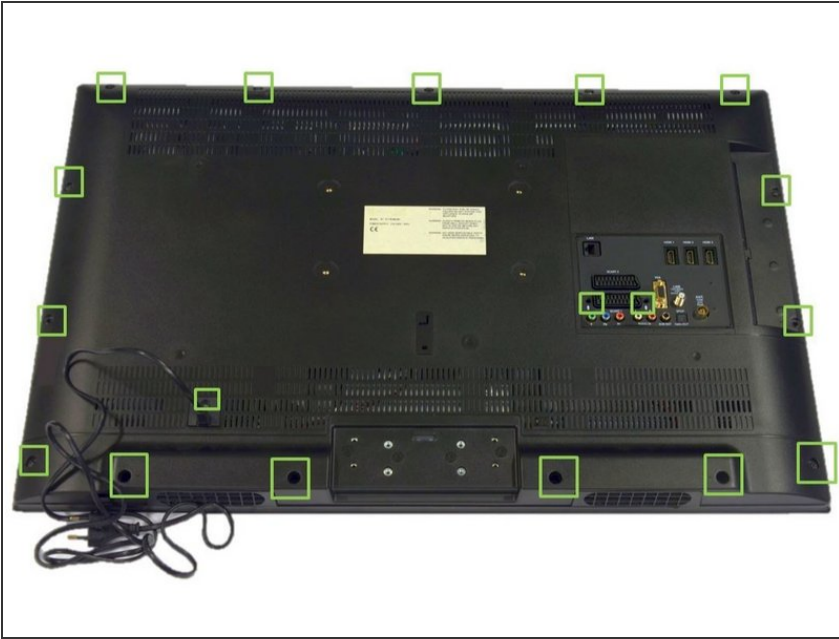


PEAQ TFT32NUMUNE TV set

Written By: Amaia

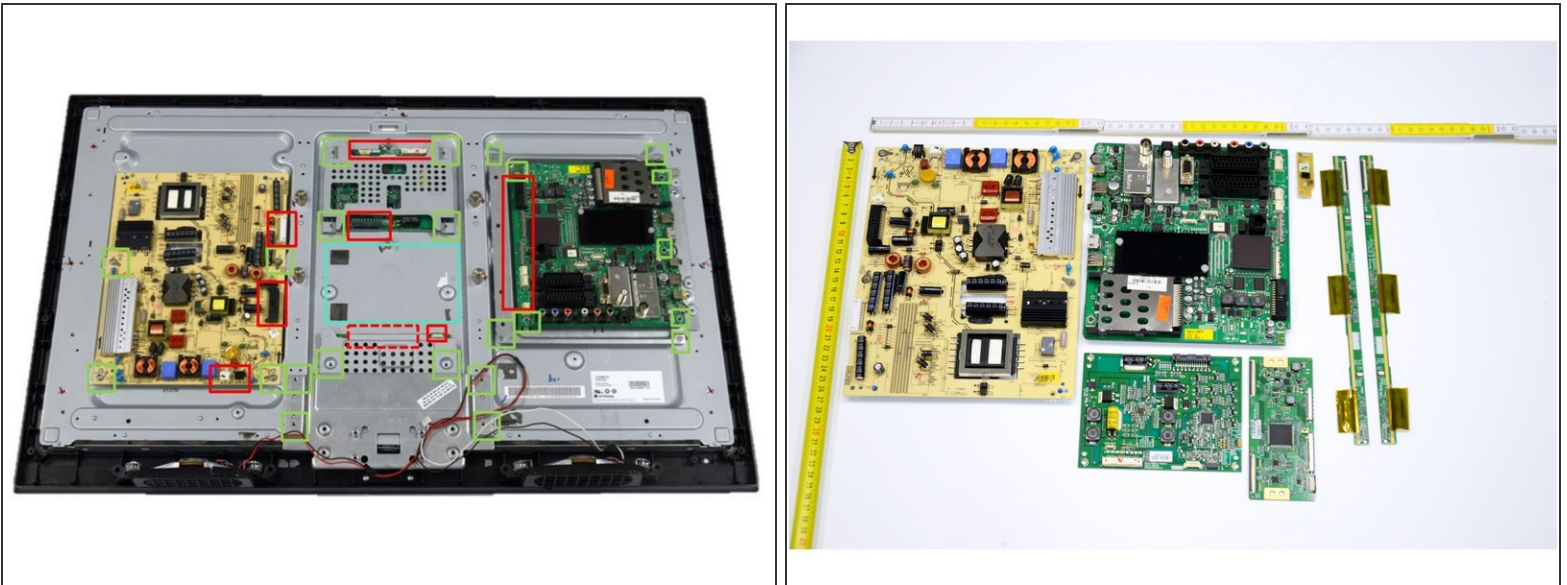


Step 1 — Opening



- Place the TV screen side-down.
- Using the PH#1 screwdriver, begin to loose the two screws located in the external connectors' square (highlighted in green boxes).
- Then, with the PH#2 screwdriver, continue to loose the sixteen screws of the back-casing (highlighted in green boxes).
- Work your way around the TV until you can pull the back cover off.

Step 2 — Removal of Printed Circuit Boards (PCB)



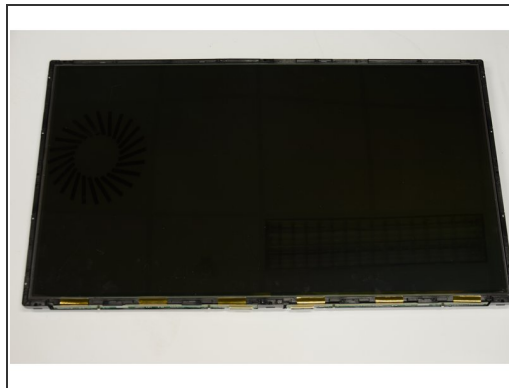
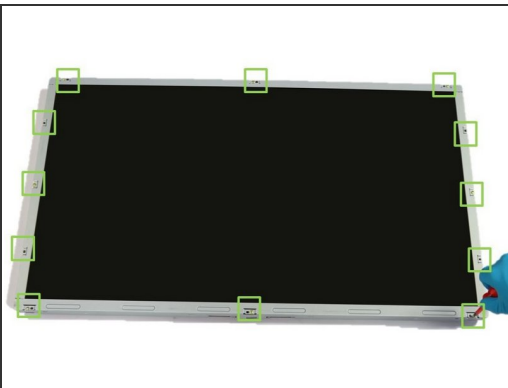
- Remove cables: Disconnect all sixteen connectors (highlighted in red boxes) and separate the tapes (highlighted in the blue box) used to fix cables to the metal casing.
- Remove Printed Circuit Boards (PCB):
 - Using PH#1 screwdriver, begin to loose the twenty-one screws (highlighted in green boxes).
 - Using J1 screwdriver, continue to loose the last two screws located in the bottom PCB protected with a double metal casing.

Step 3 — Removal of Speakers



- Remove the speakers by extracting them manually from their mountings (blue boxes).

Step 4 — Removal of Liquid Crystal Display (LCD)



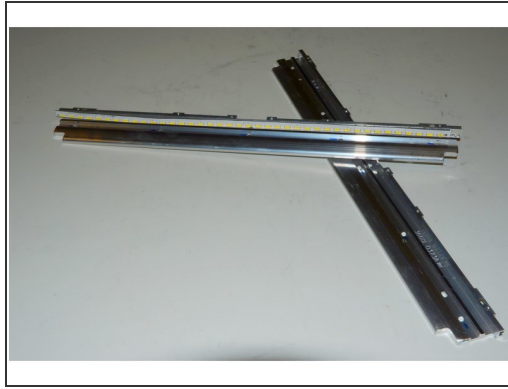
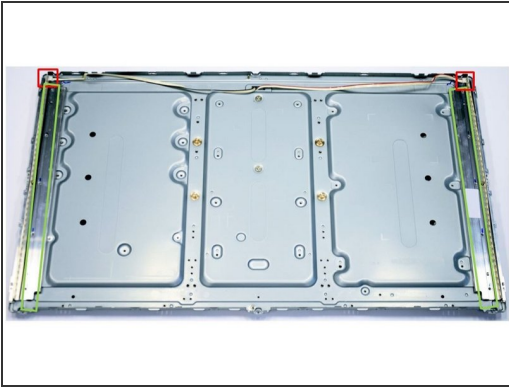
- Place the TV screen up and remove the front frame which is already exposed.
- Using PH#1 screwdriver, begin to loose the twelve screws of the inner frame.
- Starting at the bottom-right corner, continue to work your way around the frame counterclockwise until you can pull the frame off.
- Remove the LCD panel which is already free.

Step 5 — Removal of Polarized Foils



- First, using a PH#1 screwdriver, loose the four screws located in the bottom of the frame (green boxes).
- Then, with slotted screwdriver, begin to lever the fourteen clips of the inner frame starting at the bottom of the TV.
- Continue to work your way around the frame counterclockwise until you can pull the frame off.
- Remove the already exposed polarized foils.

Step 6 — Removal of Backlights (LED)



- Use your fingers to pry open the two connectors of the PCBs.
- Using PH#1 screwdriver, loose the ten screws used to fix the LEDs containing metal components.
- Take the two metal parts where the LED PCBs are located.
 - Using PH#1 screwdriver, loose the two side screws used to fix the PCBs to the metal part.
 - Use a slotted screwdriver to separate the PCB that is glued to the mounting.
 - Repeat the previous couple of steps with the other metal part.

Step 7 — TV Dismantling Fractions



- All fractions obtained after TV dismantling.

