

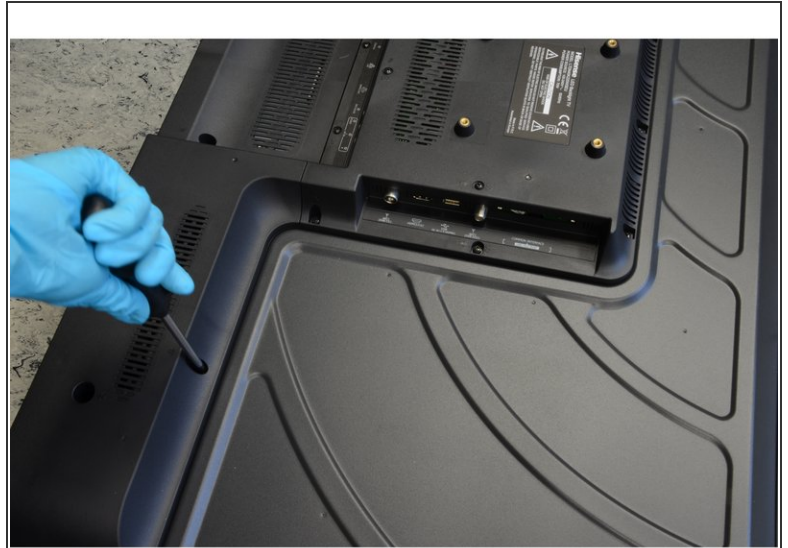
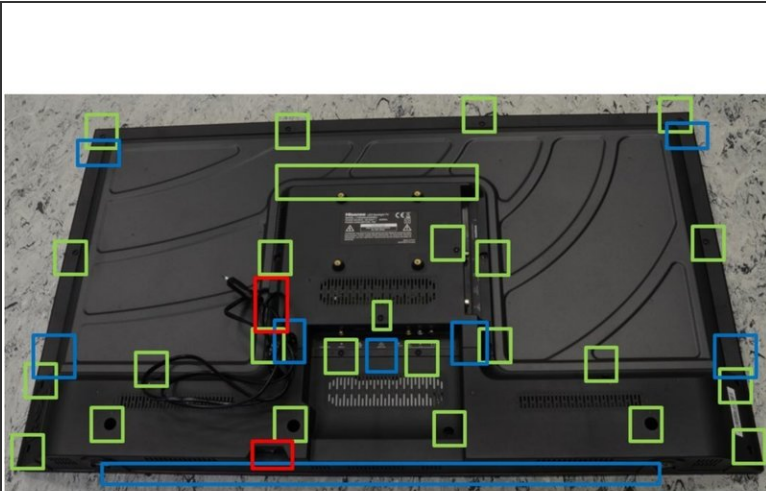


Hisense LTDN40K220WSEU TV set

Written By: Amaia



Step 1 — Opening



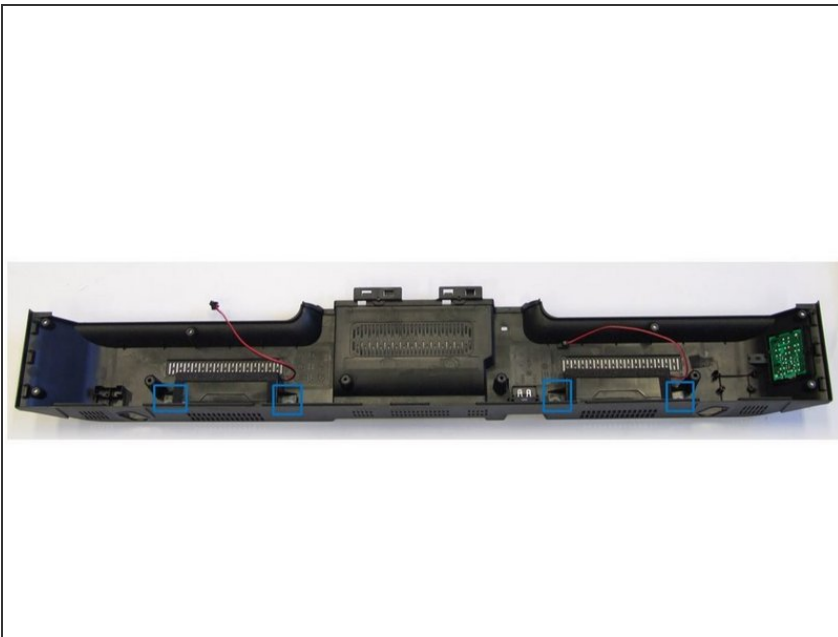
- Start the TV opening from the back side.
- Using PH#2 screwdriver, begin to loose the twenty-seven screws distributed all over the back-casing.
- Manually pry the sides and the bottom part of the TV to detach the fifteenth clips.
- Remove the plastic back cover.

Step 2 — Removal of Printed Circuit Boards (PCB)



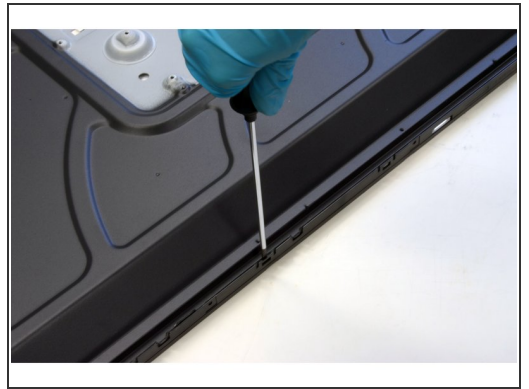
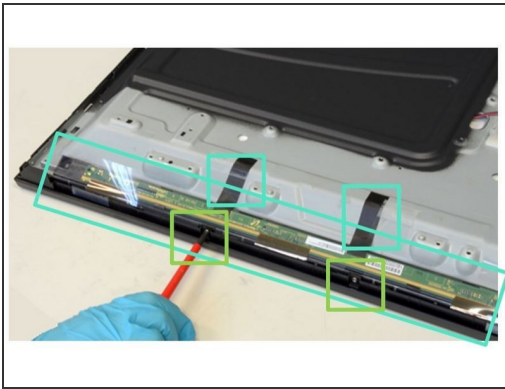
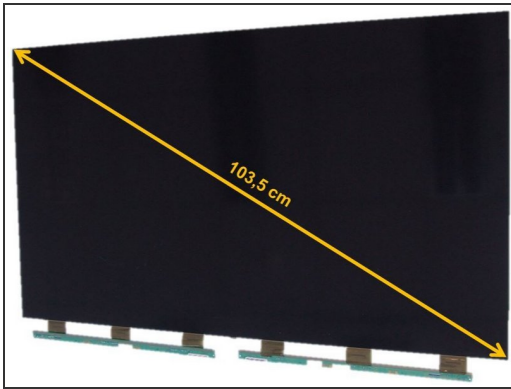
- Remove cables: Remove all twelve connectors (highlighted in red boxes) and rip off the tapes used to fix the cables to the metal frame.
- Remove Printed Circuit Boards (PCBs): Using PH#2 screwdriver, begin to loose the eight screws (highlighted in green boxes) which fix the PCBs to the metal casing.
- Then, lever two clips (highlighted in blue boxes) and remove the PCBs.

Step 3 — Removal of Speakers



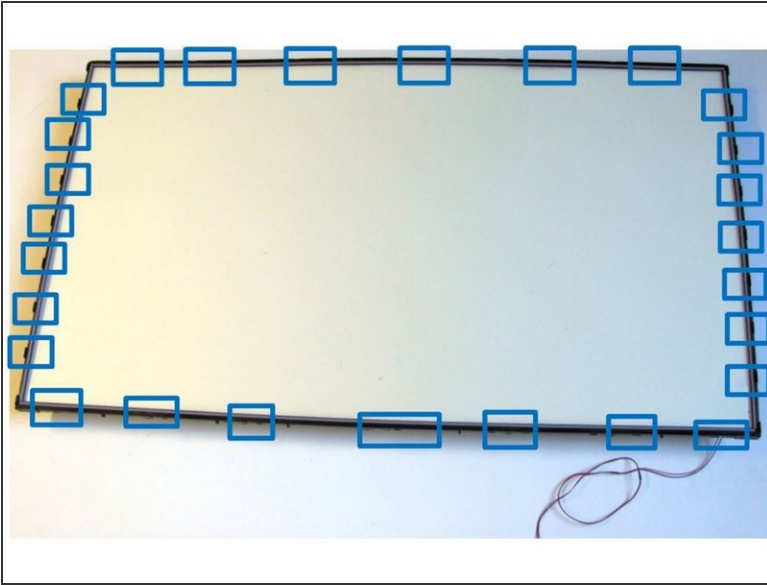
- Remove the Speakers by extracting them manually from their mountings (blue boxes).

Step 4 — Removal of Liquid Crystal Display (LCD)



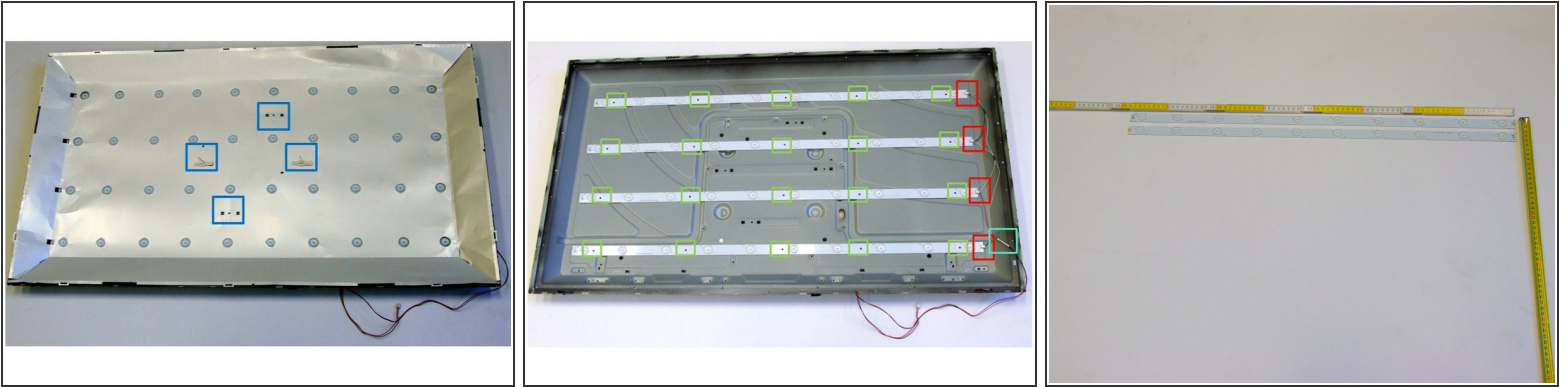
- Using PH#1 screwdriver, loose the seventeen screws from the front frame (highlighted in green boxes).
- Using slotted screwdriver, pry twelve clips and remove the second frame.
- Rip off the adhesives in order to remove the LCD PCBs (marked in blue).

Step 5 — Removal of Polarized Foils



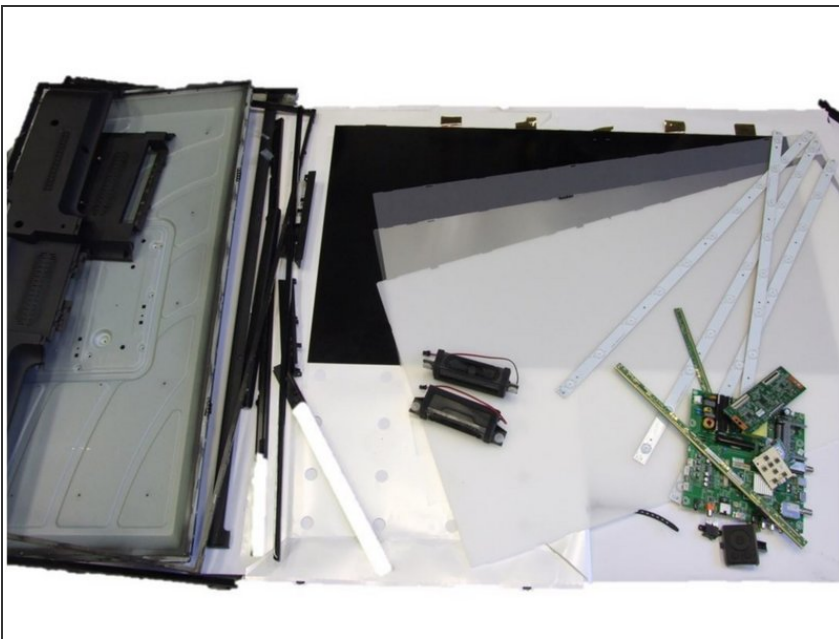
- Using slotted screwdriver, begin to lever the twenty-seven clips (highlighted in blue boxes) of the inner frame.
- Continue to work your way around the frame until you can pull the frame off.
- Next, remove the polarized foils.

Step 6 — Removal of Backlights (LED)



- Using slotted screwdriver, loose the four clips (marked in blue).
- Rip off the protective foil and access the backlight unit.
- Using PH#1 screwdriver, begin to loose the twenty screws that fix the PCBs to the metal casing (marked in Green).
- Manually lever the four connectors and separate all PCBs.

Step 7 — TV Dismantling Fractions



- All fractions obtained after TV dismantling.